

UNITED STATES
DEPARTMENT OF THE INTERIOR
GEOLOGICAL SURVEY

APPLICATION FOR PERMIT TO DRILL, DEEPEN, OR PLUG BACK

1a. TYPE OF WORK

DRILL ☒DEEPEN ☐PLUG BACK ☐

b. TYPE OF WELL

OIL
WELL ☐GAS
WELL ☒

OTHER

SINGLE
ZONE ☒MULTIPLE
ZONE ☐

2. NAME OF OPERATOR

El Paso Natural Gas Company

3. ADDRESS OF OPERATOR

PO Box 990, Farmington, NM 87401

4. LOCATION OF WELL (Report location clearly and in accordance with any State requirements.)*

At surface

1610'N, 810'W

At proposed prod. zone

14. DISTANCE IN MILES AND DIRECTION FROM NEAREST TOWN OR POST OFFICE*

15. DISTANCE FROM PROPOSED*

LOCATION TO NEAREST

PROPERTY OR LEASE LINE, FT.

(Also to nearest drlg. unit line, if any)

18. DISTANCE FROM PROPOSED LOCATION*

TO NEAREST WELL, DRILLING, COMPLETED,
OR APPLIED FOR, ON THIS LEASE, FT.

16. NO. OF ACRES IN LEASE

19. PROPOSED DEPTH

3874'

17. NO. OF ACRES ASSIGNED

TO THIS WELL

160.00

20. ROTARY OR CABLE TOOLS

Rotary

21. ELEVATIONS (Show whether DF, RT, GR, etc.)

6815'GR

22. APPROX. DATE WORK WILL START*

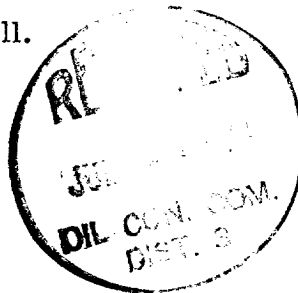
23.

PROPOSED CASING AND CEMENTING PROGRAM

SIZE OF HOLE	SIZE OF CASING	WEIGHT PER FOOT	SETTING DEPTH	QUANTITY OF CEMENT
12 1/4"	8 5/8"	24.0#	120'	106 cu. ft. to circulate
6 3/4"	2 7/8"	6.4#	3874'	217 cu. ft. to cover Ojo Alamo

Selectively perforate and sandwater fracture the Pictured Cliffs formation.

The NW/4 of Section 20 is dedicated to this well.



IN ABOVE SPACE DESCRIBE PROPOSED PROGRAM: If proposal is to deepen or plug back, give data on present productive zone and proposed new productive zone. If proposal is to drill or deepen directionally, give pertinent data on subsurface locations and measured and true vertical depths. Give blowout preventer program, if any.

24.

SIGNED

A. G. Linder

TITLE

Drilling Clerk

DATE July 22, 1974

(This space for Federal or State office use)

PERMIT NO.

APPROVAL DATE

APPROVED BY

TITLE

DATE

CONDITIONS OF APPROVAL, IF ANY:

*See Instructions On Reverse Side

**NEW MEXICO OIL CONSERVATION COMMISSION
WELL LOCATION AND ACREAGE DEDICATION PLAT**

Form C-102
Supersedes C-128
Effective 1-1-65

All distances must be from the outer boundaries of the Section.

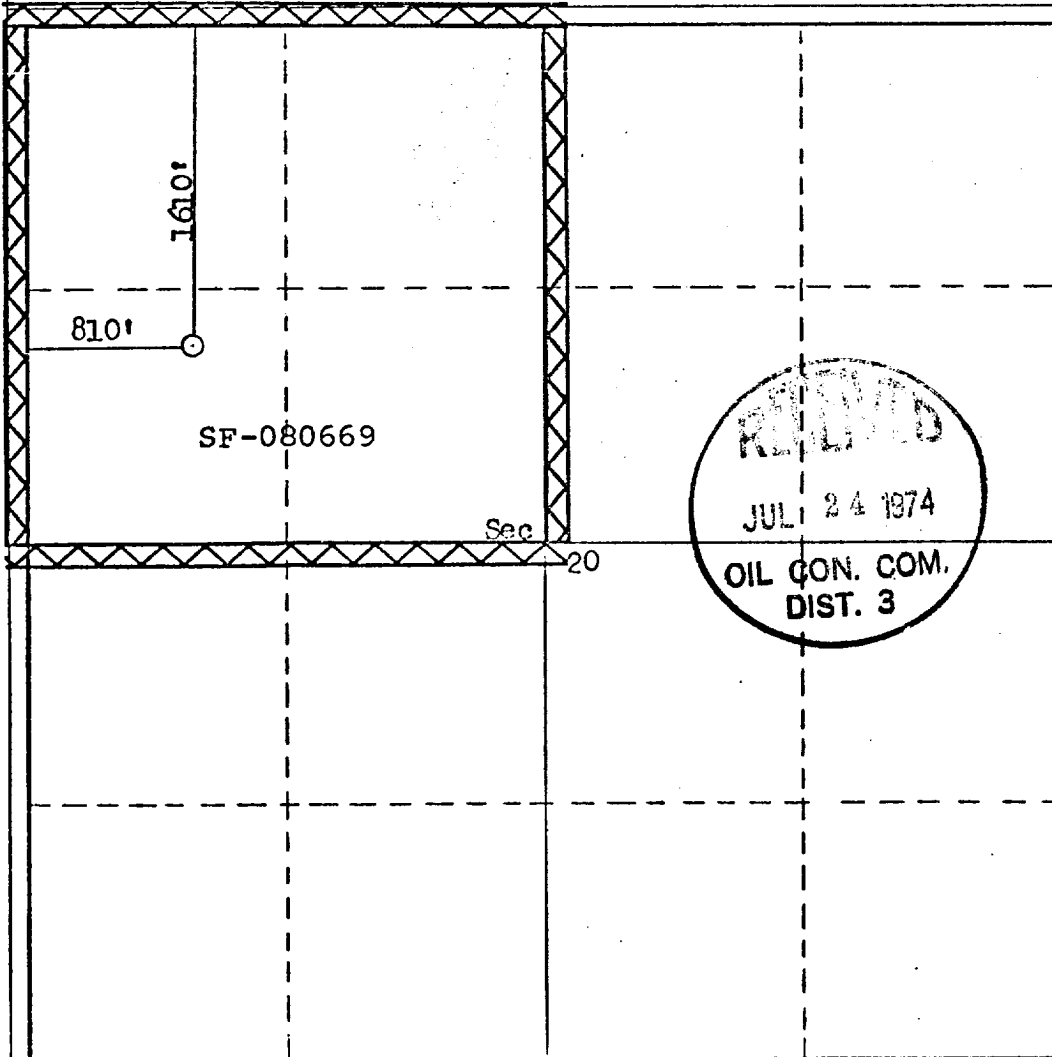
Operator El Paso Natural Gas Company			Lease San Juan 27-4 Unit (SF-080669)		Well No. 107
Unit Letter E	Section 20	Township 27N	Range 4W	County Rio Arriba	
Actual Footage Location of Well: 1610 feet from the North line and 810 feet from the West line					
Ground Level Elev. 6815	Producing Formation Pictured Cliff		Pool Tapacito Pictured Cliffs	Dedicated Acreage: 160.00 Acres	

- Outline the acreage dedicated to the subject well by colored pencil or hachure marks on the plat below.
- If more than one lease is dedicated to the well, outline each and identify the ownership thereof (both as to working interest and royalty).
- If more than one lease of different ownership is dedicated to the well, have the interests of all owners been consolidated by communitization, unitization, force-pooling, etc?

☒ Yes ☐ No If answer is "yes," type of consolidation Unitization

If answer is "no," list the owners and tract descriptions which have actually been consolidated. (Use reverse side of this form if necessary.) _____

No allowable will be assigned to the well until all interests have been consolidated (by communitization, unitization, forced-pooling, or otherwise) or until a non-standard unit, eliminating such interests, has been approved by the Commission.



CERTIFICATION

I hereby certify that the information contained herein is true and complete to the best of my knowledge and belief.

A. G. Lucas

Name
Drilling Clerk
Position
El Paso Natural Gas Co.

Company
July 22, 1974

Date

I hereby certify that the well location shown on this plat was plotted from field notes of actual surveys made by me or under my supervision, and that the same is true and correct to the best of my knowledge and belief.

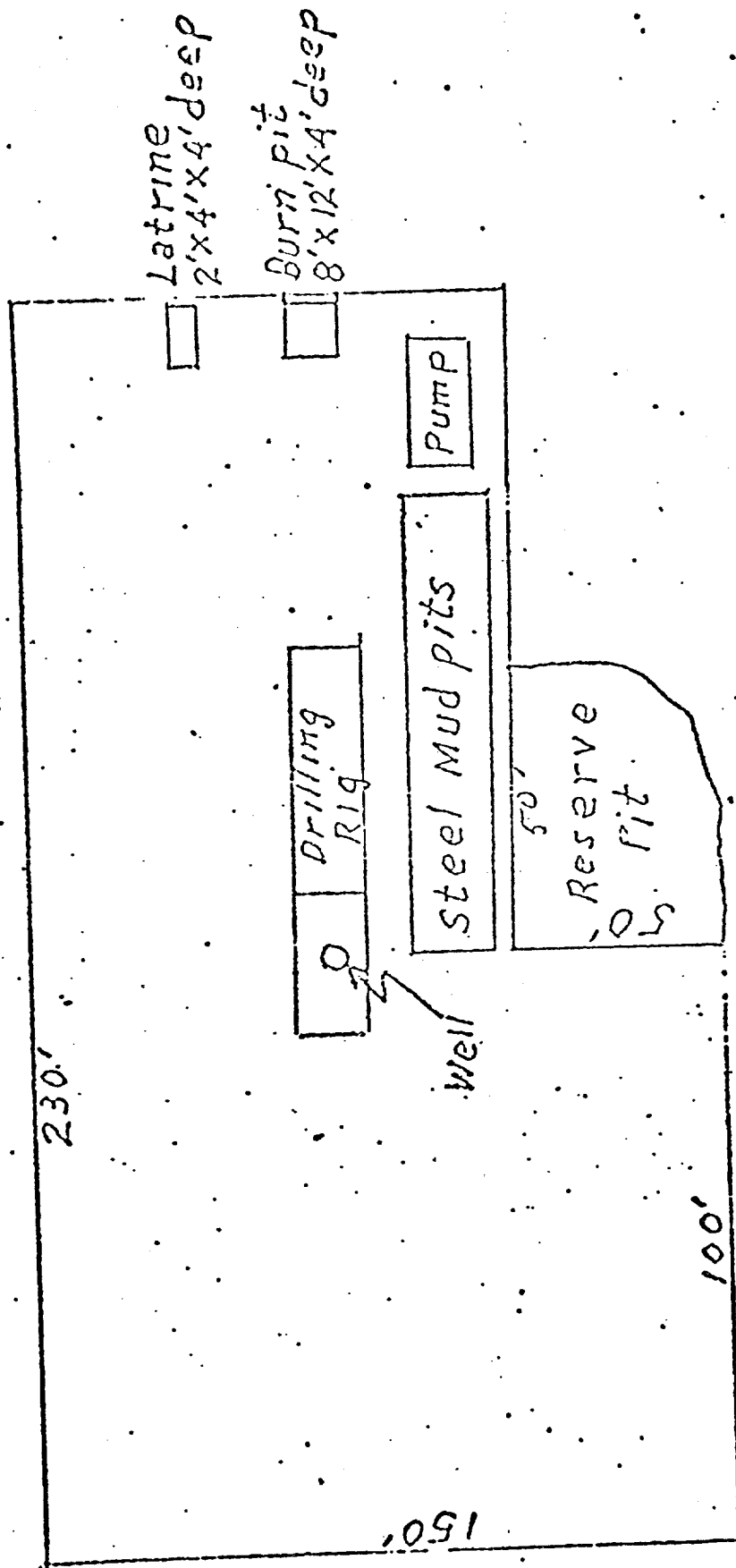
Date Surveyed
April 18, 1974
Registered Professional Engineer
and/or Land Surveyor

Fred B. Kerr
Fred B. Kerr

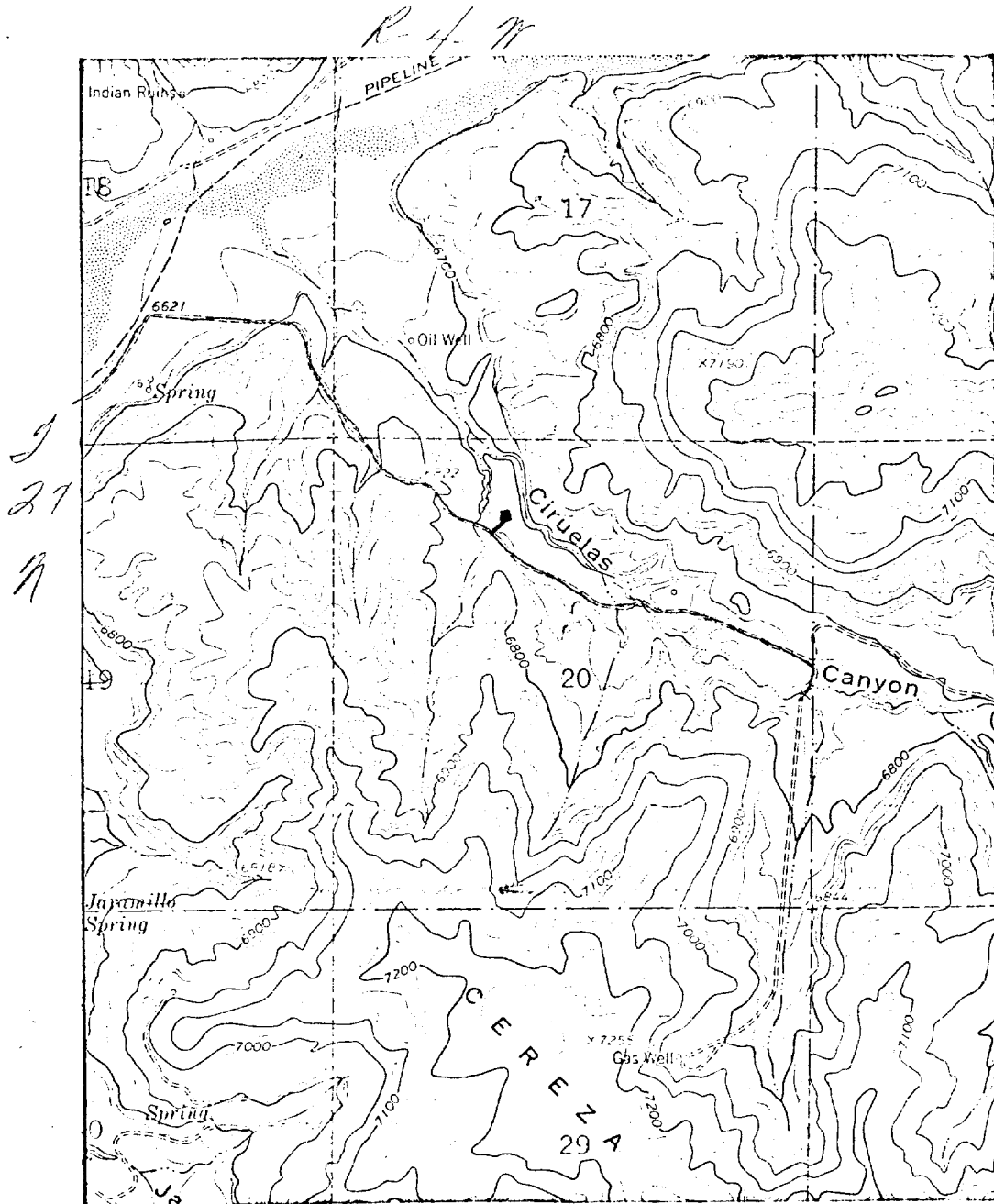
Certificate No.
2050

LOCATION AND EQUIPMENT LAY-OUT

San Juan 27-4 Chir 107



San Juan 27-1 Unit #107
 S 27 N 1/4 Sec. 20, T 29 N, R 4 W



LEGEND OF RIGHT-OF-WAYS

EXISTING ROADS	— — — —
EXISTING PIPELINES	+ + + +
EXISTING ROAD & PIPELINE	+ + + +
PROPOSED ROADS	— — — —
PROPOSED PIPELINES	+ + + +
PROPOSED ROAD & PIPELINE	+ + + +