

UNITED STATES  
DEPARTMENT OF THE INTERIOR  
GEOLOGICAL SURVEY

30-039-21135

## APPLICATION FOR PERMIT TO DRILL, DEEPEN, OR PLUG BACK

## 1a. TYPE OF WORK

DRILL ☒DEEPEN ☐PLUG BACK ☐

## b. TYPE OF WELL

OIL  
WELL ☐GAS  
WELL ☒

OTHER

SINGLE  
ZONE ☒MULTIPLE  
ZONE ☐

## 2. NAME OF OPERATOR

Northwest Pipeline Corporation

## 3. ADDRESS OF OPERATOR

P. O. Box 90 Farmington, New Mexico 87401

## 4. LOCATION OF WELL (Report location clearly and in accordance with any State requirements.\*)

At surface

880' FSL &amp; 880' FEL

At proposed prod. zone

## 14. DISTANCE IN MILES AND DIRECTION FROM NEAREST TOWN OR POST OFFICE\*

90 Miles Southeast of Bloomfield

## 15. DISTANCE FROM PROPOSED\*

LOCATION TO NEAREST  
PROPERTY OR LEASE LINE, FT.  
(Also to nearest drlg. unit line, if any)

## 18. DISTANCE FROM PROPOSED LOCATION\*

TO NEAREST WELL, DRILLING, COMPLETED,  
OR APPLIED FOR, ON THIS LEASE, FT.

## 16. NO. OF ACRES IN LEASE

## 19. PROPOSED DEPTH

4100

17. NO. OF ACRES ASSIGNED  
TO THIS WELL

160

## 20. ROTARY OR CABLE TOOLS

Rotary

## 21. ELEVATIONS (Show whether DF, RT, GR, etc.)

7113' GR

## 22. APPROX. DATE WORK WILL START\*

Sept. 1, 1975

## 23.

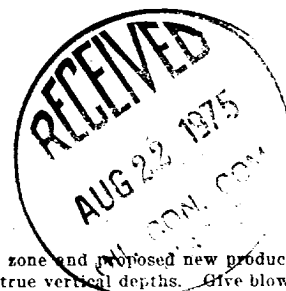
## PROPOSED CASING AND CEMENTING PROGRAM

SIZE OF HOLE	SIZE OF CASING	WEIGHT PER FOOT	SETTING DEPTH	QUANTITY OF CEMENT
12 1/4"	8 5/8"	24	150'	90 sxs.
6 1/4"	2 7/8"	6.4	4100'	150 sxs.

Selectively perforate and stimulate the Pictured Cliffs formation.

A BOP will be installed after the surface casing is set and cemented. All subsequent work will be conducted through the BOP.

The SE/4 of Section 34 is dedicated to this well.



IN ABOVE SPACE DESCRIBE PROPOSED PROGRAM: If proposal is to deepen or plug back, give data on present productive zone and proposed new productive zone. If proposal is to drill or deepen directionally, give pertinent data on subsurface locations and measured and true vertical depths. Give blowout preventer program, if any.

## 24.

SIGNED

*D. H. Maronecelli*  
D. H. Maronecelli

TITLE

Petroleum Engineer

DATE

8/19/75

(This space for Federal or State office use)

PERMIT NO.

APPROVAL DATE

APPROVED BY

TITLE

DATE

CONDITIONS OF APPROVAL, IF ANY:

*OK*

RECEIVED

AUG 21 1975

\*See Instructions On Reverse Side

U. S. GEOLOGICAL SURVEY  
FARMINGTON, N.M.

**NEW MEXICO OIL CONSERVATION COMMISSION  
WELL LOCATION AND ACREAGE DEDICATION PLAT**

Form C-102  
Supersedes C-128  
Effective 1-1-65

All distances must be from the outer boundaries of the Section.

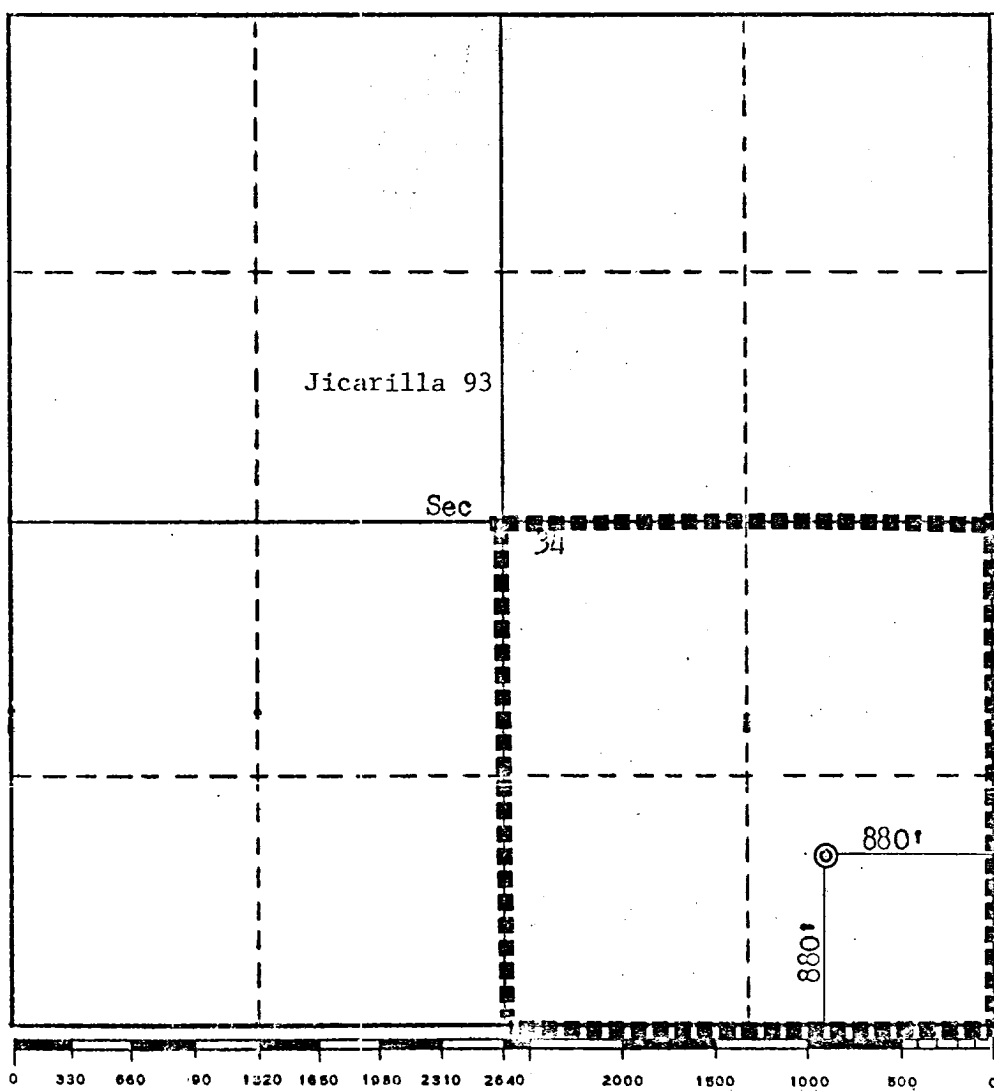
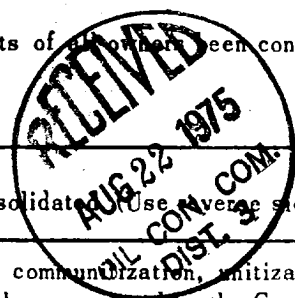
Operator <b>Northwest Pipeline Corporation</b>			Lease <b>Jicarilla 93</b>		Well No. <b>4</b>
Unit Letter <b>P</b>	Section <b>34</b>	Township <b>27N</b>	Range <b>3W</b>	County <b>Rio Arriba</b>	
Actual Footage Location of Well: <b>880</b> feet from the <b>South</b> line and <b>880</b> feet from the <b>East</b> line					
Ground Level Elev. <b>7113</b>	Producing Formation <b>Pictured Cliffs</b>		Pool <b>Gavilan</b>	Dedicated Acreage: <b>160.00</b> Acres	

1. Outline the acreage dedicated to the subject well by colored pencil or hachure marks on the plat below.
2. If more than one lease is dedicated to the well, outline each and identify the ownership thereof (both as to working interest and royalty).
3. If more than one lease of different ownership is dedicated to the well, have the interests of all owners been consolidated by communitization, unitization, force-pooling, etc?

☐ Yes ☐ No If answer is "yes," type of consolidation \_\_\_\_\_

If answer is "no," list the owners and tract descriptions which have actually been consolidated (use reverse side of this form if necessary.) \_\_\_\_\_

No allowable will be assigned to the well until all interests have been consolidated (by communitization, unitization, forced-pooling, or otherwise) or until a non-standard unit, eliminating such interests, has been approved by the Commission.



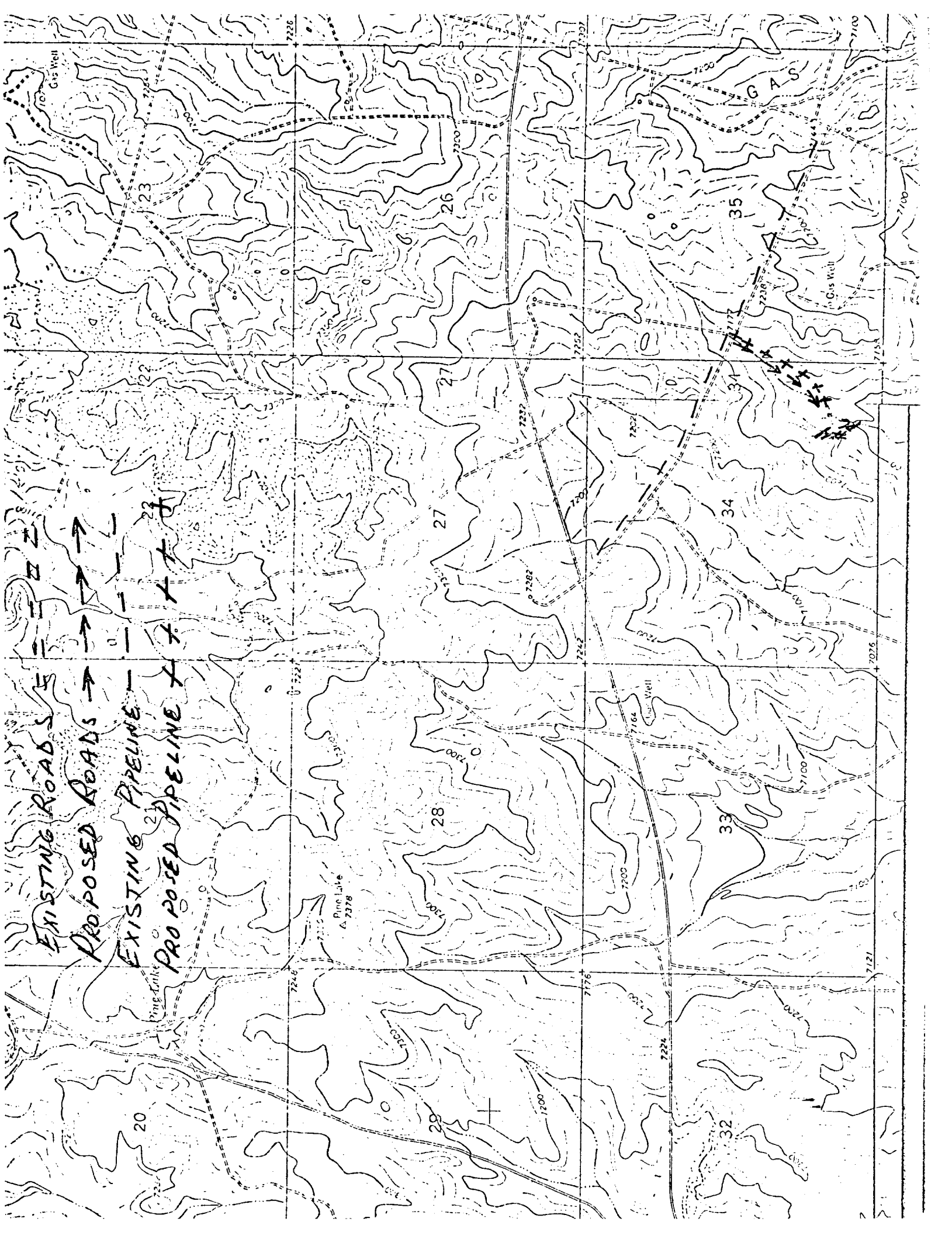
**CERTIFICATION**

I hereby certify that the information contained herein is true and complete to the best of my knowledge and belief.

*D. J. Marshall*  
 Name \_\_\_\_\_  
 Position **Petroleum Engineer**  
 Company **Northwest Pipeline Corp.**  
 Date **August 19, 1975**

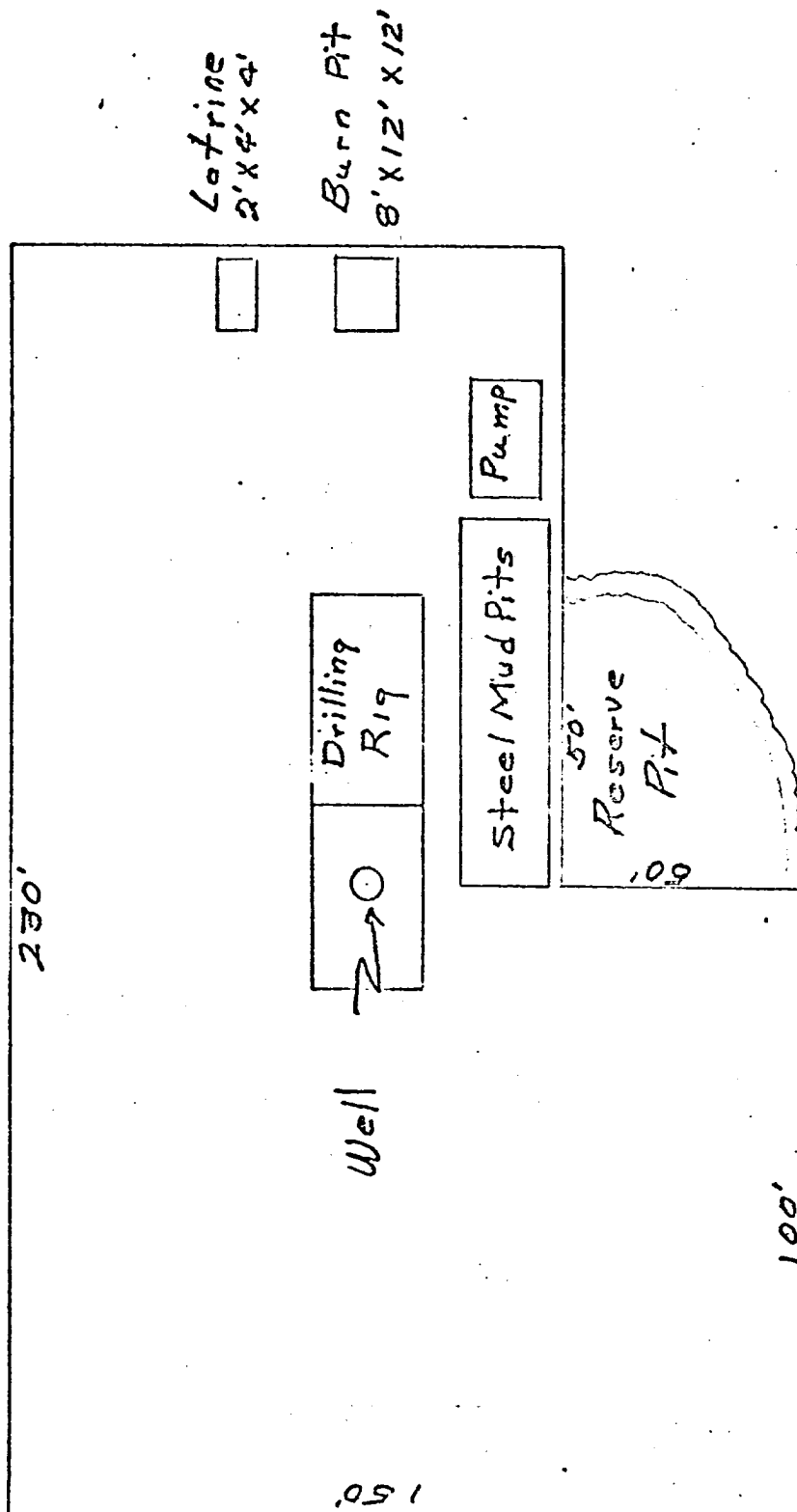
I hereby certify that the well location shown on this plat was plotted from field notes of actual surveys made by me or under my supervision, and that the same is true and correct to the best of my knowledge and belief.

Date Surveyed **July 24, 1975**  
 Registered Professional Engineer and/or Land Surveyor  
*Fred B. Kerr Jr.*  
 Certificate No. **3950**



LOCATION AND EQUIPMENT LAYOUT

JULARILLA 93 #4



Northwest Pipeline Corporation



PRODUCTION & DRILLING  
P. O. BOX 90  
FARMINGTON, NEW MEXICO 87401

5114-31-75  
August 19, 1975

United States Geological Survey  
P. O. Box 1809  
Durango, Colorado 81301

Re: Application for "Permit to Drill  
Jicarilla 93 #4 (PC)  
SE/4 Sec. 34, T27N, R3W  
Rio Arriba County, New Mexico

Gentlemen:

Information regarding existing roads, pipelines, flowlines, etc., relative to the above well location, is included on the enclosed attachments.

Water for drilling and completion operations will be obtained from the Jicarilla Tapicito Water Hole located in the SE/4 SE/4 Sec. 17, T26N, R4W.

Waste disposal will be in the burn pit, latrine or reserve pit. There will be no camp or airstrip associated with drilling this well. Upon completion or abandonment of this well the location will be cleaned, leveled, and a dry hole marker placed if applicable.

Sincerely,

D. H. Maroncelli  
Northwest Pipeline Corporation  
Petroleum Engineer

DHM/mag  
xc: File

RECEIVED

AUG 21 1975

U. S. GEOLOGICAL SURVEY  
DURANGO, CO.