

UNITED STATES  
DEPARTMENT OF THE INTERIOR  
GEOLOGICAL SURVEY

API 90-039-21210

5. LEASE DESIGNATION AND SERIAL NO.  
NM 03733

## APPLICATION FOR PERMIT TO DRILL, DEEPEN, OR PLUG BACK

6. IF INDIAN, ALLOTTEE OR TRIBAL NAME

7. UNIT AGREEMENT NAME

8. FARM OR LEASE NAME

Breech

9. WELL NO.

332

10. FIELD, POOL, OR WILDCAT

South Blanco-Otero Chacra

11. SEC., T., R., M., OR BLK.  
AND SURVEY OR AREA

Section 23 26N 7W

12. COUNTY OR PARISH

Rio Arriba

13. STATE

New Mex.

1a. TYPE OF WORK

DRILL ☒DEEPEN ☐PLUG BACK ☐

b. TYPE OF WELL

OIL  
WELL ☐GAS  
WELL ☒

OTHER

SINGLE  
ZONE ☐MULTIPLE  
ZONE ☒

2. NAME OF OPERATOR

Caulkins Oil Company

3. ADDRESS OF OPERATOR

Post Office Box 780, Farmington, New Mexico

4. LOCATION OF WELL (Report location clearly and in accordance with any State requirements.)

At surface

790' from the North and 1160' from the East

At proposed prod. zone

Same

14. DISTANCE IN MILES AND DIRECTION FROM NEAREST TOWN OR POST OFFICE\*

35 miles Southeast of Blanco, New Mexico

15. DISTANCE FROM PROPOSED\*

LOCATION TO NEAREST  
PROPERTY OR LEASE LINE, FT.

(Also to nearest drlg. unit line, if any)

790

18. DISTANCE FROM PROPOSED LOCATION\*  
TO NEAREST WELL, DRILLING, COMPLETED,  
OR APPLIED FOR, ON THIS LEASE, FT.

2620

16. NO. OF ACRES OF LEASE

2400

19. PROPOSED DEPTH

3775

17. NO. OF ACRES ASSIGNED  
TO THIS WELL

160

20. ROTARY OR CABLE TOOLS

Rotary

21. ELEVATIONS (Show whether DF, RT, GR, etc.)

6534 Ground

22. APPROX. DATE WORK WILL START\*

May 1, 1976

23.

## PROPOSED CASING AND CEMENTING PROGRAM

SIZE OF HOLE	SIZE OF CASING	WEIGHT PER FOOT	SETTING DEPTH	QUANTITY OF CEMENT
12 3/4	8 5/8	24	100	Sufficient to circulate
7 7/8	4 1/2	10.5	3775	Approx. 400 sacks.

It is proposed to drill well to approx. 3775'. 4 1/2" 10.5# casing will be run to TD and cemented with sufficient cement to cover Alamo Sand. After cement sets 120 hours or more, casing will be perforated opposite Chacra sand and then sand-water fraced with approx. 50,000# sand. Bridge plug will be set above Chacra perforations and then Pictured Cliffs will be perforated and sand water fraced. Bridge plug will be drilled out then permanent type production packer will be set at approx. 2800. 11 7/4" IJ tubing will be run to production packer for Chacra production. 1" Non EUE tubing will be run to top of Pictured Cliffs perforations.

A pressure operated double blowout preventor will be in use at all times while drilling below 100'.

IN ABOVE SPACE DESCRIBE PROPOSED PROGRAM: If proposal is to deepen or plug back, give data on present productive zone and proposed new productive zone. If proposal is to drill or deepen directionally, give pertinent data on subsurface locations and measured and true vertical depths. Give blowout preventer program, if any.

24.

SIGNED

*Charles E. DeGuer*

TITLE

Superintendent

DATE

April 2, 1976

(This space for Federal or State office use)

PERMIT NO.

APPROVAL DATE

APPROVED BY

TITLE

DATE

CONDITIONS OF APPROVAL, IF ANY:

*OK*

\*See Instructions On Reverse Side

**NEW MEXICO OIL CONSERVATION COMMISSION  
WELL LOCATION AND ACREAGE DEDICATION PLAT**

Form C-102  
Supersedes C-101  
Effective 1-65

All distances must be from the outer boundaries of the Section.

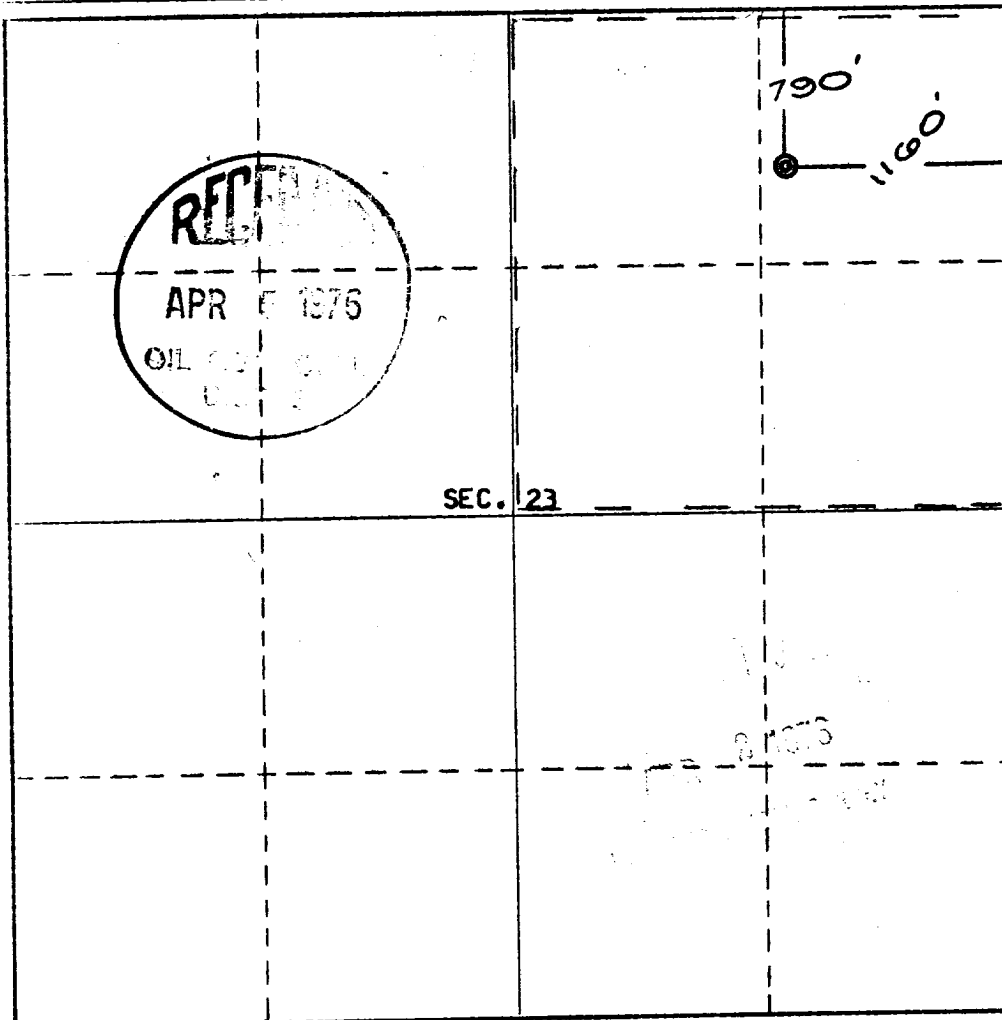
Operator <b>Caulkins Oil Company</b>			Lease <b>NM 03733 <i>Breach 332</i></b>		Well No. <b>332</b>
Well Letter <b>A</b>	Section <b>23</b>	Township <b>26 North</b>	Range <b>7 West</b>	County <b>Rio Arriba</b>	
Initial Footage Location of Well:					
790 feet from the <b>North</b> line and		1160 feet from the <b>East</b> line			
Ground Level Elev. <b>6534</b>	Producing Formation <b>Pictured Cliffs-Chacra</b>	Pool <b>PC</b>	Dedicated Acreage: <b>160' 160'</b> acres		

1. Outline the acreage dedicated to the subject well by colored pencil or hachure marks on the plat below.
2. If more than one lease is dedicated to the well, outline each and identify the ownership thereof (both as to working interest and royalty).
3. If more than one lease of different ownership is dedicated to the well, have the interests of all owners been consolidated by communitization, unitization, force-pooling, etc?

☐ Yes ☐ No If answer is "yes," type of consolidation \_\_\_\_\_

If answer is "no," list the owners and tract descriptions which have actually been consolidated. (Use reverse side of this form if necessary.) \_\_\_\_\_

No allowable will be assigned to the well until all interests have been consolidated (by communitization, unitization, forced-pooling, or otherwise) or until a non-standard unit, eliminating such interests, has been approved by the Commission.



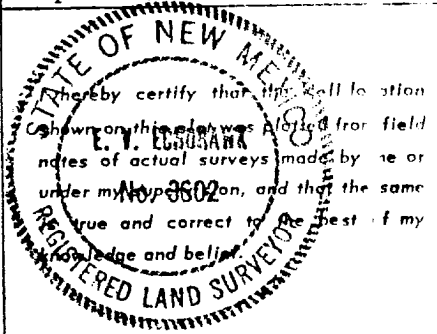
**CERTIFICATION**

I hereby certify that the information contained herein is true and complete to the best of my knowledge and belief.

Name *Charles E. Echaw*  
Position  
**Superintendent**

Company  
**Caulkins Oil Company**

Date  
**April 2, 1976**



Date Surveyed  
**March 23, 1976**

Registered Professional Engineer  
and/or Land Surveyor

*E. V. Echaw*

Certificate No. **3602**  
**E. V. Echaw LS**



CAULKINS OIL COMPANY  
Post Office Box 780  
Farmington, New Mexico

April 2, 1976

United States Dept. of the Interior  
Geological Survey  
Post Office Box 1809  
Durango, Colorado 81301

Gentlemen:

Following is our 12 point development plan for surface use on our well No. 332.  
NE 1/4 Section 23 26N 7W, Rio Arriba County, New Mexico.

Existing roads now being used to service wells in section 24 26N 7W will be used.

(2) 3/4 mile of new road will be required for this location. Terrain very rough,  
covered with rock. Some shooting may be required./

(3) (4) See Topo map.

(5) (8) (9) No tank, airstrip or camp.

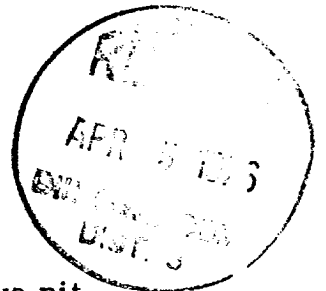
(6) Water will be hauled from water hole in section 13 26N 7W.

(7) All cuttings, trash, garbade and etc. will be confined to reserve pit.

(10) Layout plat for location and pit attached.

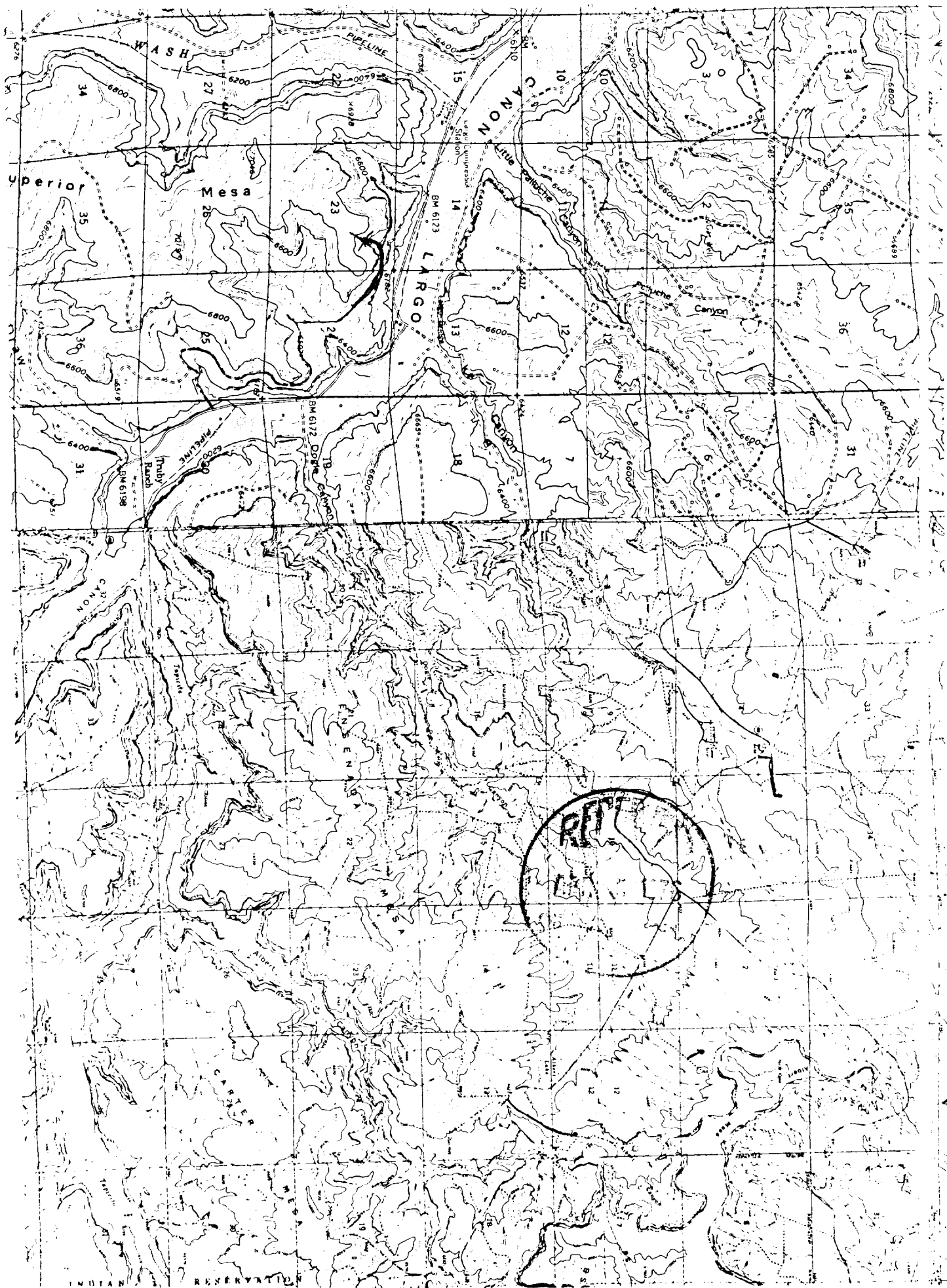
(11) Reserve pit will be leveled and cleaned up, then complete area reseeded.

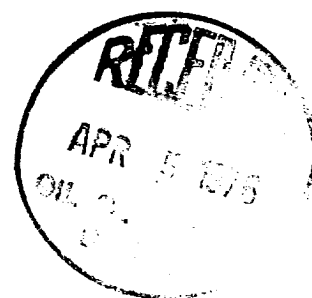
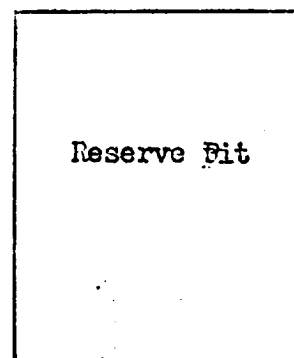
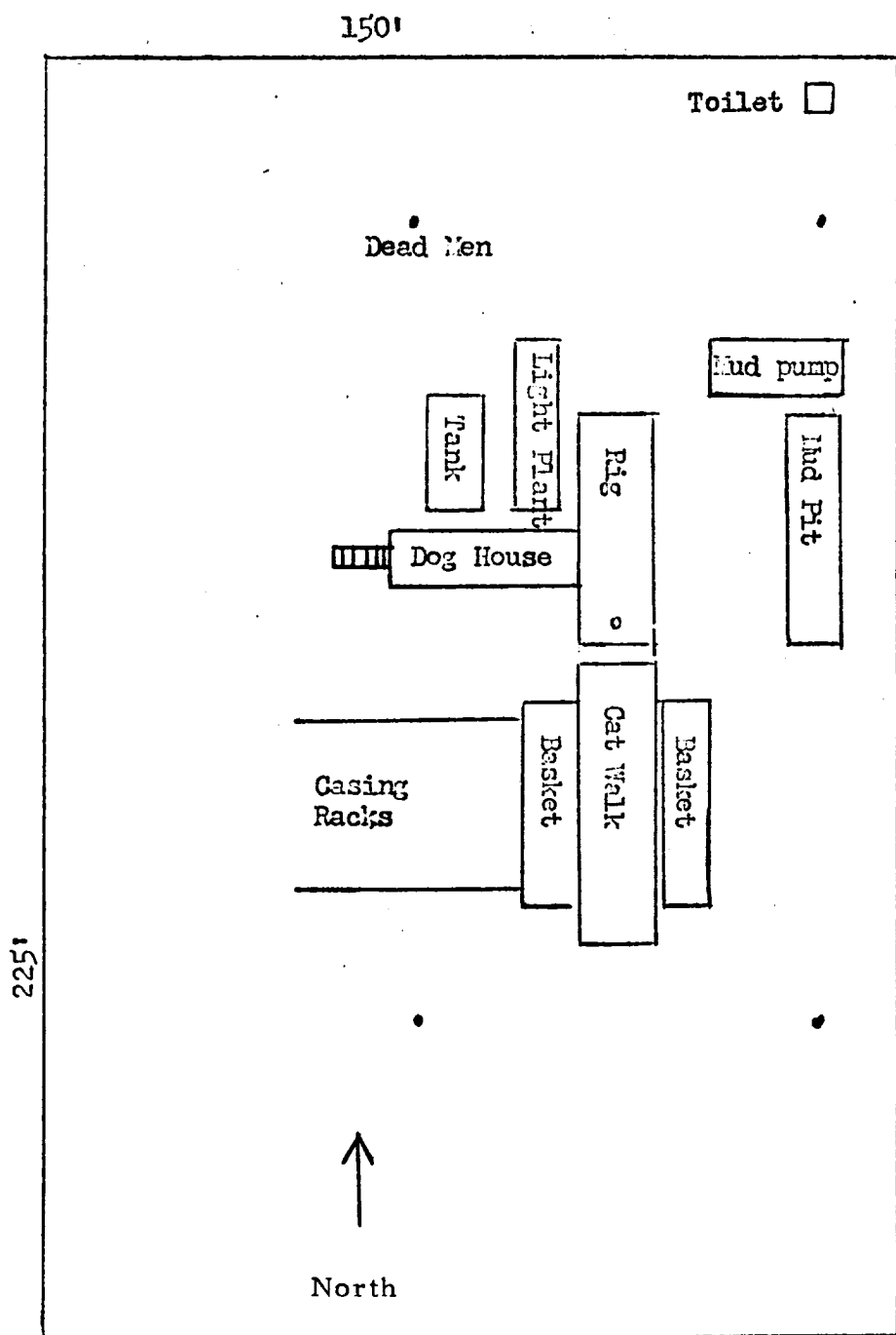
(12) Location will be built in head of small canyon. Cedar trees and pinon pine  
vegetation, Will be necessary to change water course and route around location.



Yours very truly,

*Charles E. Vargas*  
Caulkins Oil Company





Scale - 33 1/3 feet per inch

Well No. 332

Located NE 1/4 Section 23 26N 7W

APR 2 1975