

UNITED STATES
DEPARTMENT OF THE INTERIOR
GEOLOGICAL SURVEY

APR 30-039-21211

APPLICATION FOR PERMIT TO DRILL, DEEPEN, OR PLUG BACK

1a. TYPE OF WORK

DRILL ☒DEEPEN ☐PLUG BACK ☐

b. TYPE OF WELL

OIL
WELL ☐GAS
WELL ☒

OTHER

SINGLE
ZONE ☐MULTIPLE
ZONE ☒

2. NAME OF OPERATOR

Caulkins Oil Company

3. ADDRESS OF OPERATOR

Post Office Box 780, Farmington, New Mexico

4. LOCATION OF WELL (Report location clearly and in accordance with any State requirements.)*

At surface

810' from the North and 1500' from the West

At proposed prod. zone

Same

14. DISTANCE IN MILES AND DIRECTION FROM NEAREST TOWN OR POST OFFICE*

35 miles Southeast of Blanco, New Mexico

15. DISTANCE FROM PROPOSED*

LOCATION TO NEAREST
PROPERTY OR LEASE LINE, FT.
(Also to nearest drig. unit line, if any)

810

18. DISTANCE FROM PROPOSED LOCATION*
TO NEAREST WELL, DRILLING, COMPLETED,
OR APPLIED FOR, ON THIS LEASE, FT.

2620

16. NO. OF ACRES IN LEASE

2400

19. PROPOSED DEPTH

3800

17. NO. OF ACRES ASSIGNED
TO THIS WELL

160

20. ROTARY OR CABLE TOOLS

Rotary

21. ELEVATIONS (Show whether DF, RT, GR, etc.)

6554 Ground

22. APPROX. DATE WORK WILL START*

May 1, 1976

23.

PROPOSED CASING AND CEMENTING PROGRAM

SIZE OF HOLE	SIZE OF CASING	WEIGHT PER FOOT	SETTING DEPTH	QUANTITY OF CEMENT
12 3/4	8 5/8	24	100	Sufficient to circulate
7 7/8	4 1/2	10.5	3800	Approx. 400 sacks.

It is proposed to drill well to approx. 3800'. 4 1/2" 10.5# casing will run to TD and cemented with sufficient cement to cover Alamo Sand. After cement has set 120 hrs. or more, casing will be perforated opposite Chacra sand and then sand-water fraced with approx. 50,000# sand. Bridge plug will be set above Chacra perforations and then Pictured Cliffs will be perforated and sand-water fraced. Bridge plug will be drilled out then permanent type production packer will be set at approx. 3400'. 1 1/4" IJ 2.3# tubing will be run to production packer for Chacra production. 1" Non EUE tubing will be run to top of Pictured Cliffs perforations.

A pressure operated double blowout preventor will be in use at all times while drilling below 100'.

IN ABOVE SPACE DESCRIBE PROPOSED PROGRAM: If proposal is to deepen or plug back, give data on present productive zone and proposed new productive zone. If proposal is to drill or deepen directionally, give pertinent data on subsurface locations and measured and true vertical depths. Give blowout preventer program, if any.

24.

SIGNED

Charles E. Deque

TITLE

Superintendent

DATE

April 2, 1976

(This space for Federal or State office use)

PERMIT NO.

APPROVAL DATE

APPROVED BY

TITLE

DATE

CONDITIONS OF APPROVAL, IF ANY:

*OK**24*

*See Instructions On Reverse Side

**NEW MEXICO OIL CONSERVATION COMMISSION
WELL LOCATION AND ACREAGE DEDICATION PLAT**

Form C-102
Supersedes C-128
Effective 1-1-65

All distances must be from the outer boundaries of the Section.

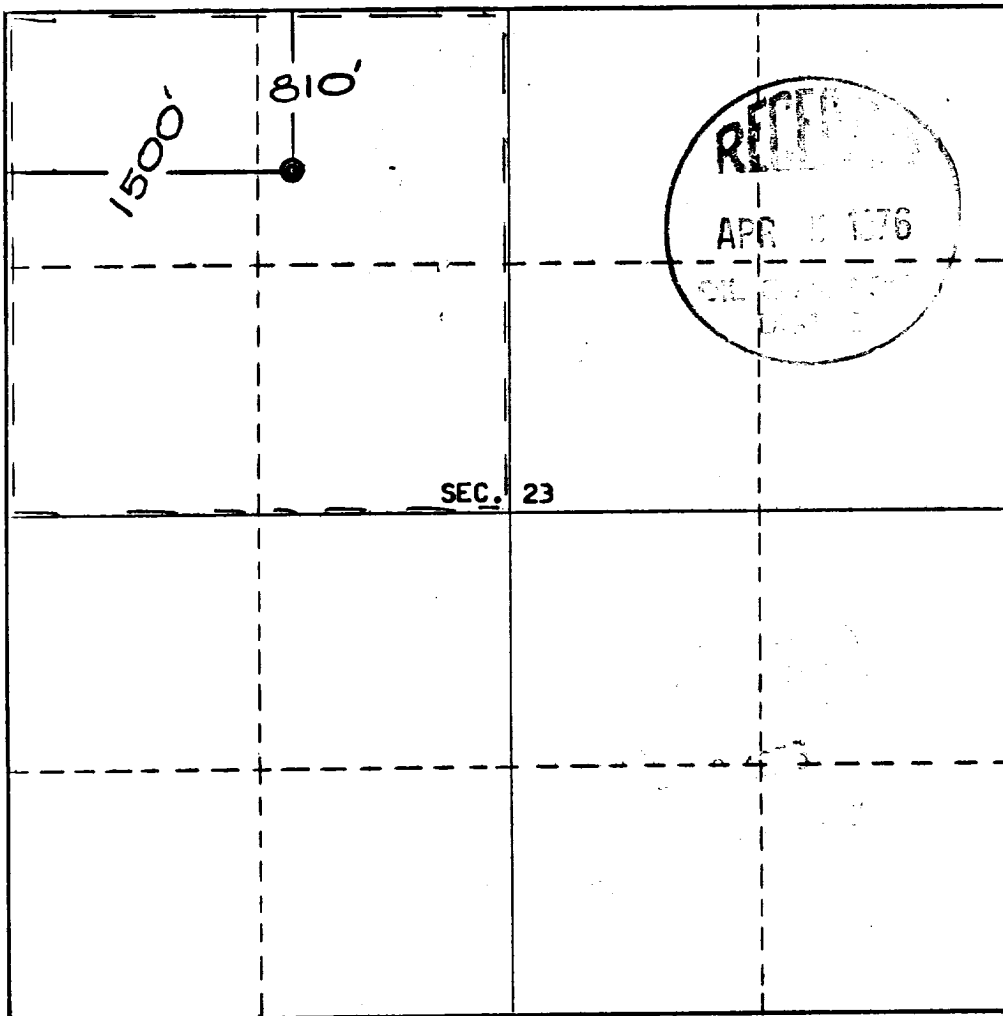
Operator Caulkins Oil Company			Lease NM 03733 <i>Breech</i>		Well No. 330
Unit Letter C	Section 23	Township 26 North	Range 7 West	County Rio Arriba	
Actual Footage Location of Well: 810 feet from the North line and 1500 feet from the West line					
Ground Level Elev. 6554	Producing Formation Pictured Cliffs-Chacra	Pool South Blanco-Otero Chacra	Dedicated Acreage: 160 Acres		

1. Outline the acreage dedicated to the subject well by colored pencil or hachure marks on the plat below.
2. If more than one lease is dedicated to the well, outline each and identify the ownership thereof (both as to working interest and royalty).
3. If more than one lease of different ownership is dedicated to the well, have the interests of all owners been consolidated by communitization, unitization, force-pooling, etc?

☐ Yes ☐ No If answer is "yes," type of consolidation _____

If answer is "no," list the owners and tract descriptions which have actually been consolidated. (Use reverse side of this form if necessary.) _____

No allowable will be assigned to the well until all interests have been consolidated (by communitization, unitization, forced-pooling, or otherwise) or until a non-standard unit, eliminating such interests, has been approved by the Commission.



CERTIFICATION

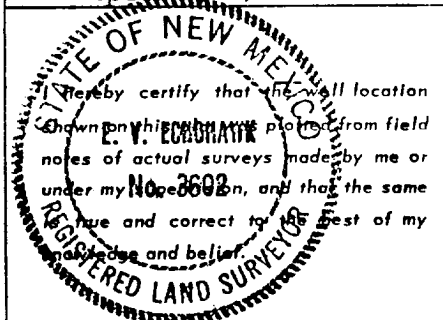
I hereby certify that the information contained herein is true and complete to the best of my knowledge and belief.

Name
Charles E. Vignier

Position
Superintendent

Company
Caulkins Oil Company

Date
April 2, 1976



Date Surveyed
March 23, 1976

Registered Professional Engineer
and/or Land Surveyor

E. V. Echohawk

Certificate No. **3602**
E.V. Echohawk LS



CAULKINS OIL COMPANY
Post Office Box 780
Farmington, New Mexico

April 2, 1976

United States Dept. of the Interior
Geological Survey
Post Office Box 1809
Durango, Colorado 81301

Gentlemen:

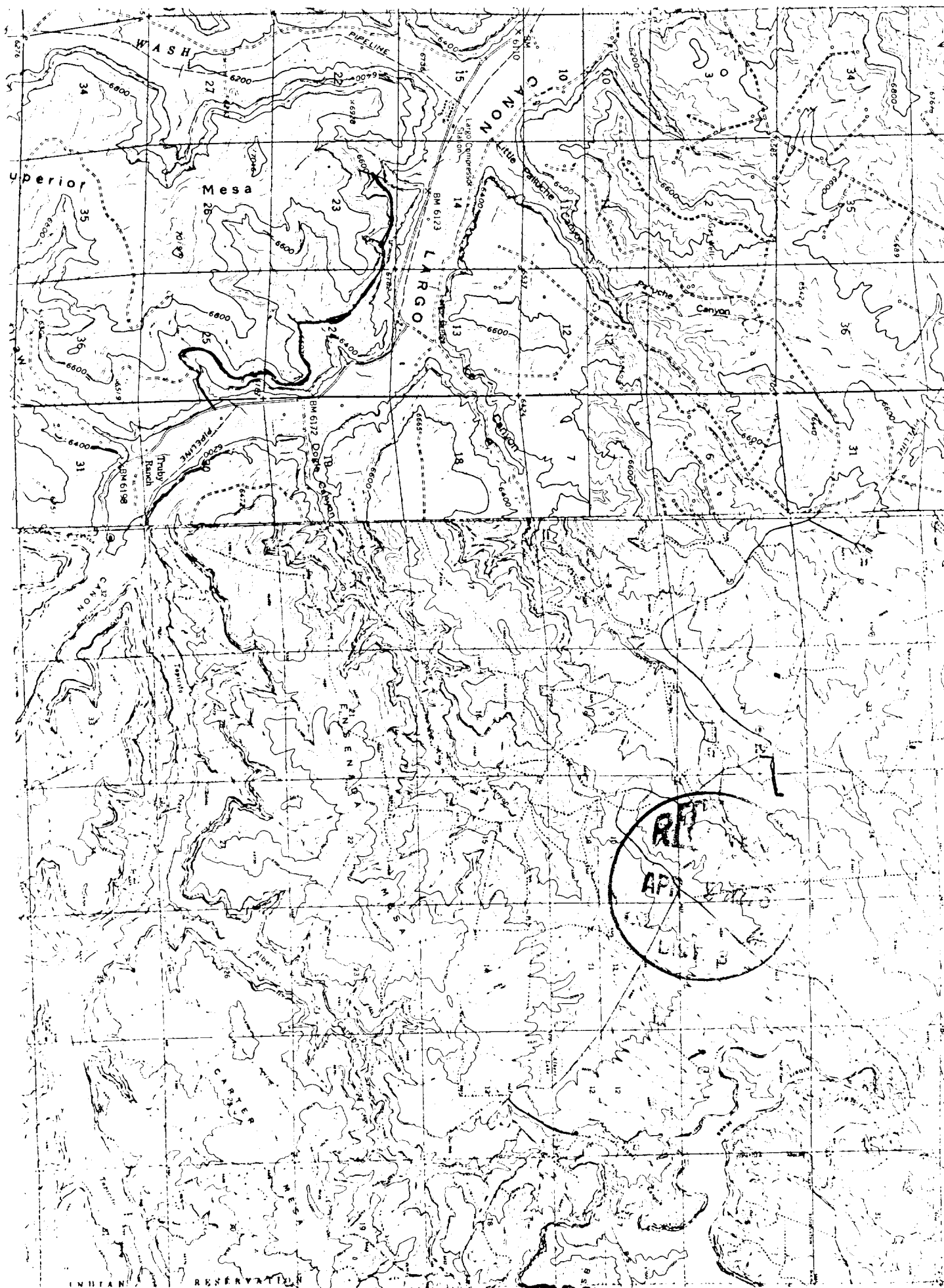
Following is our 12 point development plan for surface use on our well No. 330, located in NW 1/4 section 23 26N 7W, Rio Arriba County, New Mexico.

- (1) Existing road now being used to service wells in Section 24 26N 7W will be used.
- (2) 3/4 mile new road extended from new road built for well in NE 1/4 of section 23 26N 6W will be required,
- (3) (4) See Topo map.
- (5) (8) (9) No tank, airstrip or camp.
- (6) Water will be hauled from Caulkins water hole in Section 13 26N 7W.
- (10) Layout plat for location and pit attached.
- (11) Reserve pit will be leveled and cleaned up. Then complete area reseeded.
- (12) Location will be built on gentle hillside. Approx. 6' cut will be required.
Vegetation is sage brush and cedar trees.

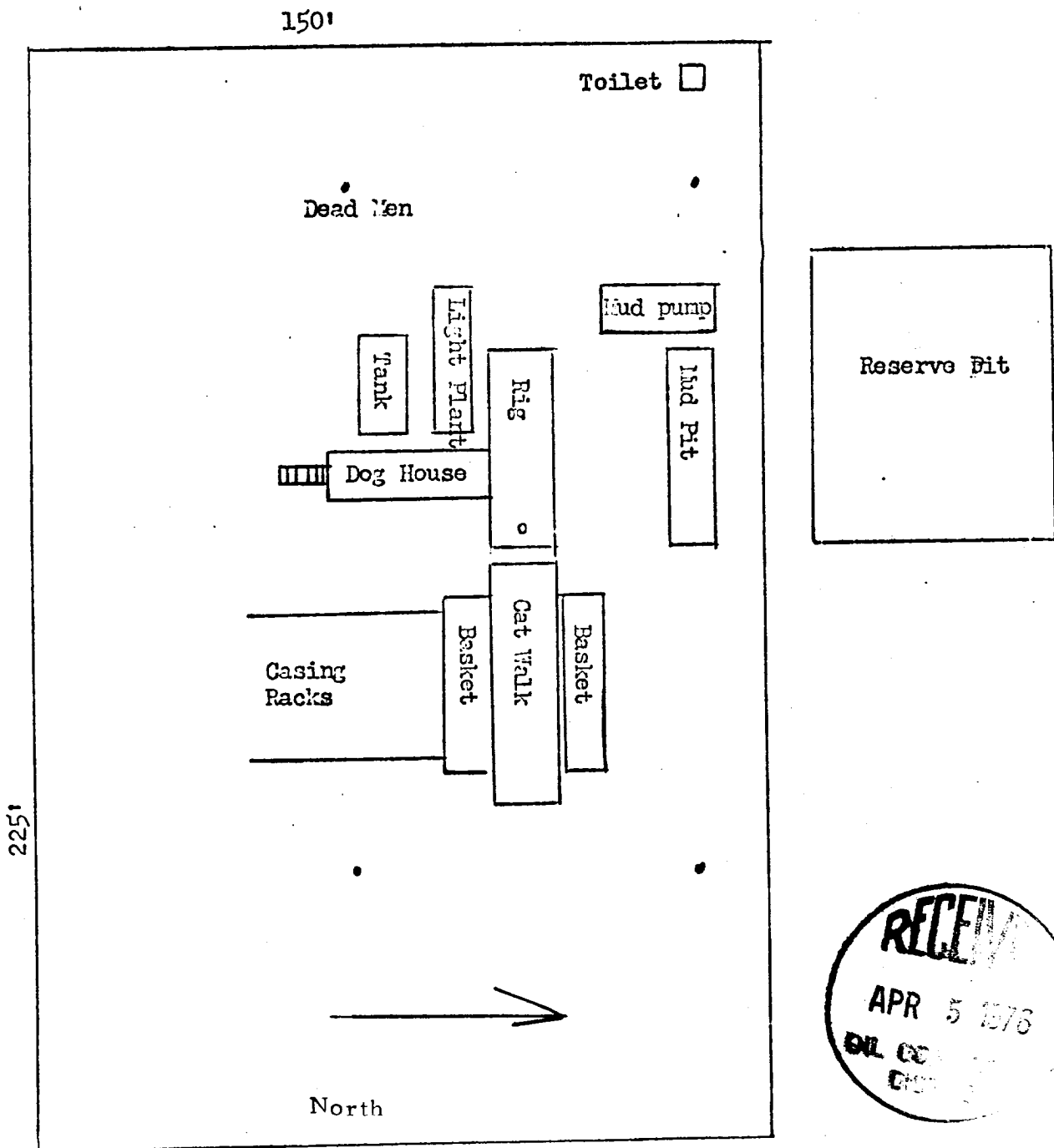


Yours. very truly,

Charles E. Vergara
Caulkins Oil Company



REF
APR 1970
LIT



Scale - 33 1/3 feet per inch

Located NW 1/4 Section 23 26N 7W

Well Number 330

