

UNITED STATES
DEPARTMENT OF THE INTERIORGEOLOGICAL SURVEY **API 30-039-21241**

APPLICATION FOR PERMIT TO DRILL, DEEPEN, OR PLUG BACK

1a. TYPE OF WORK

DRILL ☒DEEPEN ☐PLUG BACK ☐

b. TYPE OF WELL

OIL
WELL ☐GAS
WELL ☒

OTHER

SINGLE
ZONE ☒MULTIPLE
ZONE ☐

2. NAME OF OPERATOR

Mobil Oil Corporation

3. ADDRESS OF OPERATOR

P. O. Box 633, Midland, Texas 79701

4. LOCATION OF WELL (Report location clearly and in accordance with any State requirements.)*

At surface

990' FNL & 990' FWL, Sec. 26, T27N, R3W

At proposed prod. zone

Same as Surface

14. DISTANCE IN MILES AND DIRECTION FROM NEAREST TOWN OR POST OFFICE*

15. DISTANCE FROM PROPOSED*

LOCATION TO NEAREST
PROPERTY OR LEASE LINE, FT.
(Also to nearest drlg. unit line, if any)

990'

990'

18. DISTANCE FROM PROPOSED LOCATION*
TO NEAREST WELL, DRILLING, COMPLETED,
OR APPLIED FOR, ON THIS LEASE, FT.

3312'

16. NO. OF ACRES IN LEASE

2560

19. PROPOSED DEPTH

6500'

17. NO. OF ACRES ASSIGNED
TO THIS WELL

w/ 320 (2 Wells)

20. ROTARY OR CABLE TOOLS

Rotary

21. ELEVATIONS (Show whether DF, RT, GR, etc.)

7308' - Ground

22. APPROX. DATE WORK WILL START*

As soon as possible

23.

PROPOSED CASING AND CEMENTING PROGRAM

SIZE OF HOLE	SIZE OF CASING	WEIGHT PER FOOT	SETTING DEPTH	QUANTITY OF CEMENT
12-1/4"	8-5/8"	20# - Misco	0 - 300'	(1) Circulate to Surface
7-7/8"	4-1/2"	9.5# - K-55	300' - 6500'	(2) Circulate to Surface

CEMENTING PROGRAM

- (1) Class B Cement containing 2% CaCl₂
- (2) Circulate in two stages using light weight filler cement in the lead slurry of each stage and tail in w/neat cement to cover pay zone.

MUD PROGRAM

Depth	Type of Mud	Weight	Viscosity	PH	Water Loss
0 - 300'	Spud				
300'-6500'	Fresh Water Gel	8.8 - 9.2	30-50	9+	10 cc

Gas is dedicated

BLOWOUT PREVENTER PROGRAM ATTACHED

IN ABOVE SPACE DESCRIBE PROPOSED PROGRAM: If proposal is to deepen or plug back, give data on present productive zone and proposed new productive zone. If proposal is to drill or deepen directionally, give pertinent data on subsurface locations and measured and true vertical depths. Give blowout preventer program, if any.

24.

SIGNED

A. D. Bond

A. D. Bond

TITLE

Proration Staff Assistant

May 24, 1976

(This space for Federal or State office use)

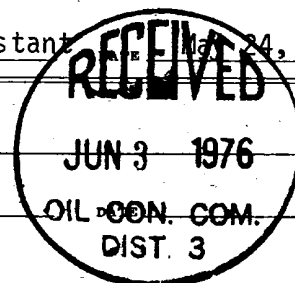
PERMIT NO.

APPROVAL DATE

APPROVED BY

TITLE

CONDITIONS OF APPROVAL, IF ANY:

Wal

*See Instructions On Reverse Side

**NEW MEXICO OIL CONSERVATION COMMISSION
WELL LOCATION AND ACREAGE DEDICATION PLAT**

Form C-102
Supersedes C-128
Effective 1-1-65

All distances must be from the outer boundaries of the Section.

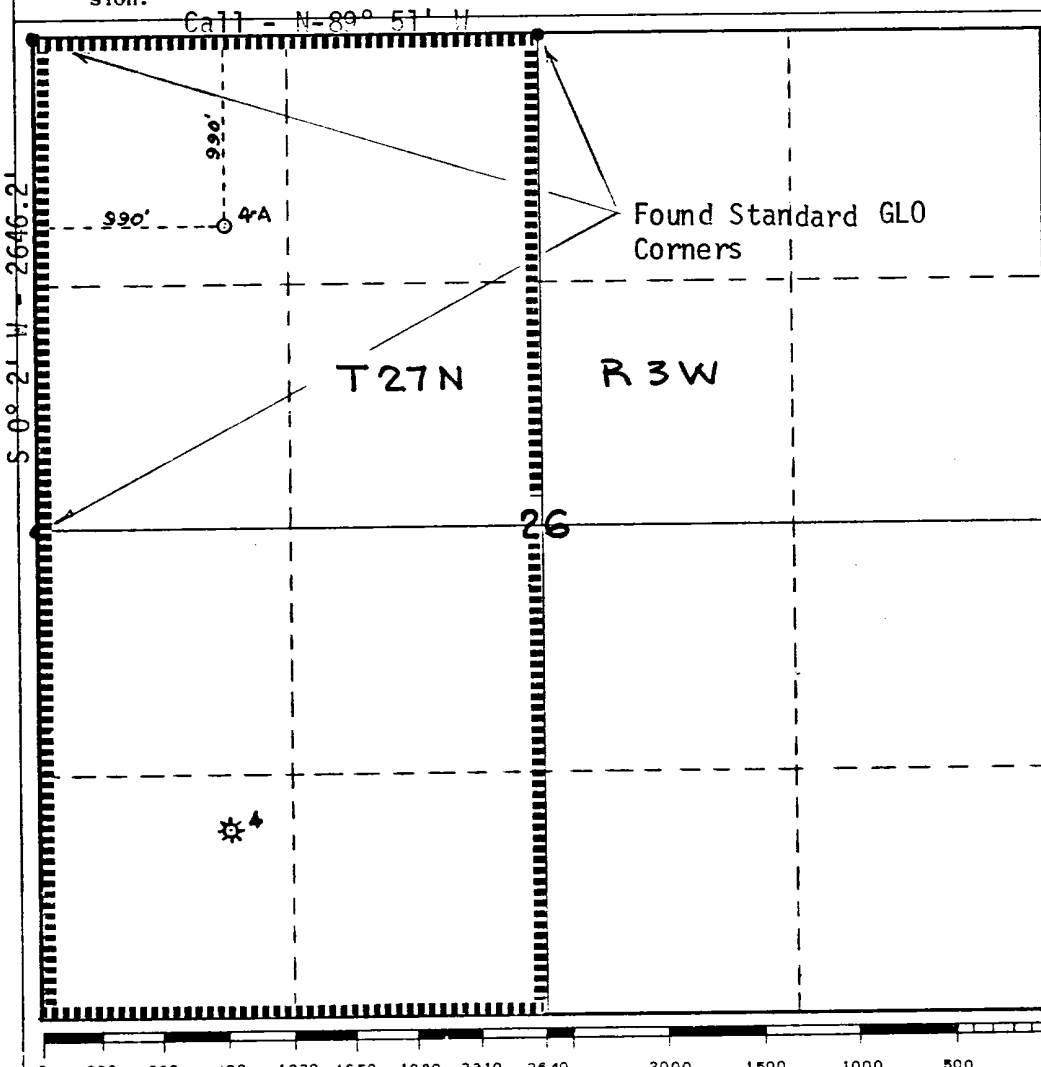
Operator Mobil Oil Corporation			Lease Jicarilla "G"		Well No. 4-A
Unit Letter D	Section 26	Township 27N	Range 3W	County Rio Arriba	
Actual Footage Location of Well: <div style="display: flex; justify-content: space-between;"> 990 feet from the North line and 990 feet from the West line </div>					
Ground Level Elev. 7308	Producing Formation Mesaverde	Pool Blanco Mesaverde	Dedicated Acreage: u/ 320 (2 wells) Acres		

1. Outline the acreage dedicated to the subject well by colored pencil or hachure marks on the plat below.
2. If more than one lease is dedicated to the well, outline each and identify the ownership thereof (both as to working interest and royalty).
3. If more than one lease of different ownership is dedicated to the well, have the interests of all owners been consolidated by communitization, unitization, force-pooling, etc?

☐ Yes ☐ No If answer is "yes," type of consolidation _____

If answer is "no," list the owners and tract descriptions which have actually been consolidated. (Use reverse side of this form if necessary.) _____

No allowable will be assigned to the well until all interests have been consolidated (by communitization, unitization, forced-pooling, or otherwise) or until a non-standard unit, eliminating such interests, has been approved by the Commission.



CERTIFICATION

I hereby certify that the information contained herein is true and complete to the best of my knowledge and belief.

A. D. Bond
Name
A. D. Bond

Position
Proration Staff Assistant

Company
Mobil Oil Corporation

Date
May 24, 1976

I hereby certify that the well location shown on this plat was plotted from field notes of actual survey made by me or under my supervision, and that the same is true and correct to the best of my knowledge and belief.

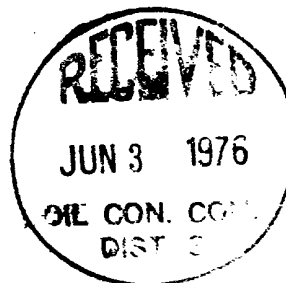
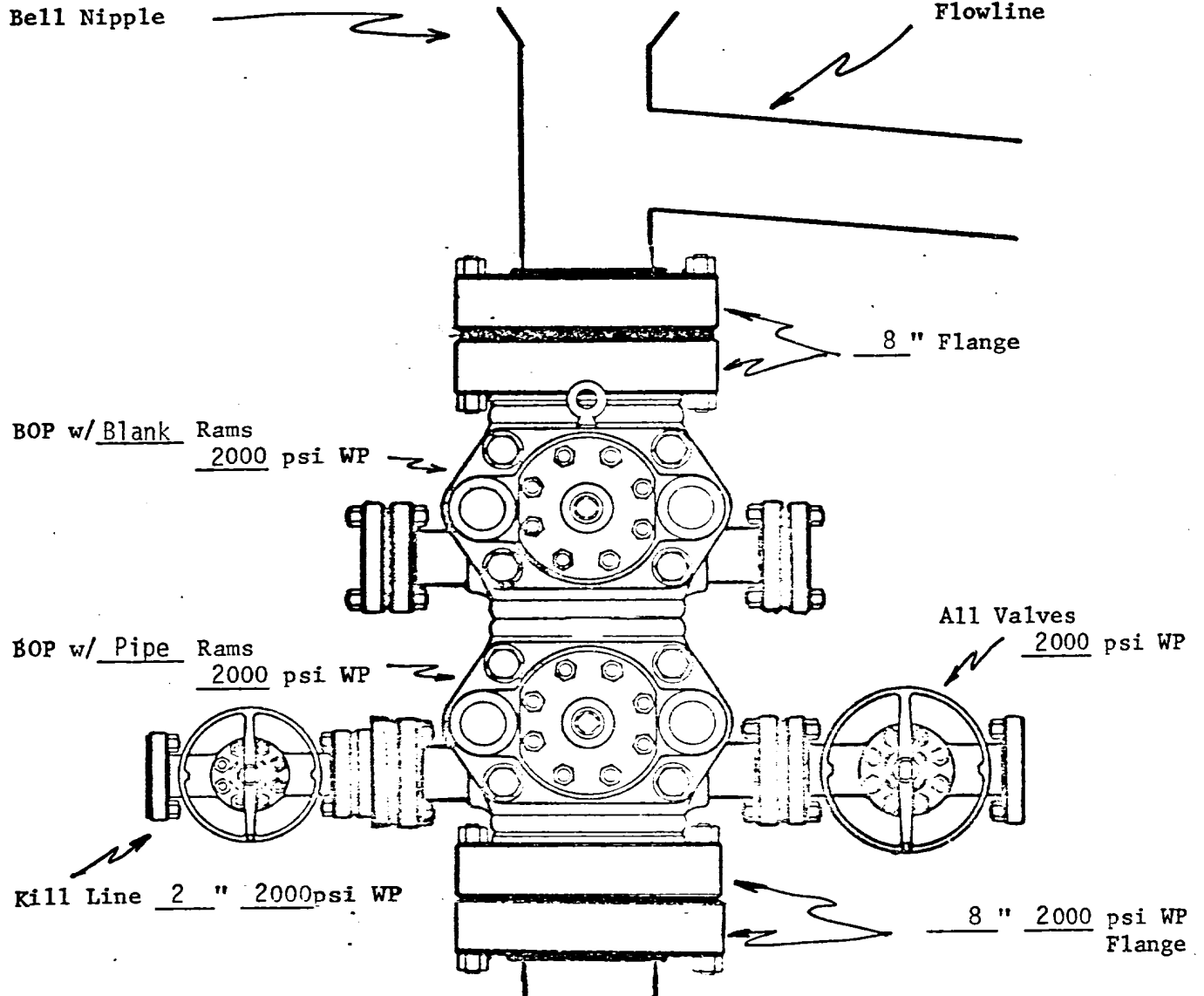
H. A. Carson
Date Surveyed

May 14, 1976
Registered Professional Engineer
and/or Land Surveyor

H. A. Carson
Certificate No.

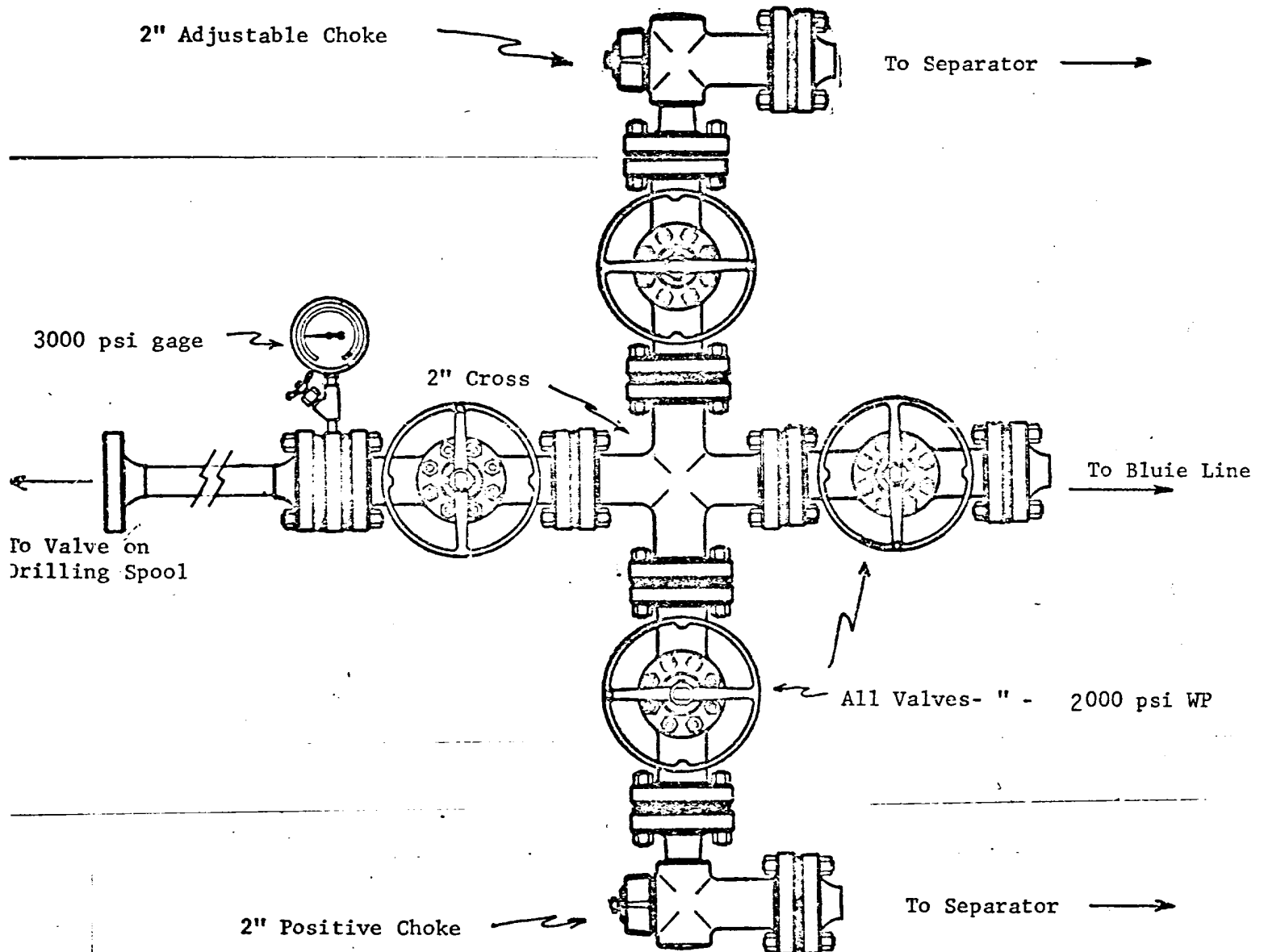
5063

PROPOSED BOP STACK
8-5/8 " CASING



MOBIL OIL CORPORATION
WELL Jicarilla G, Well #4-A
Rio Arriba COUNTY,
New Mexico

PROPOSED CHOKE MANIFOLD
(MINIMUM REQUIREMENTS)
8-5/8 " CASING STRING



MOBIL OIL CORP.
WELL NAME & NO. Jicarilla G
Well #4-A
Rio Arriba COUNTY, New Mexico

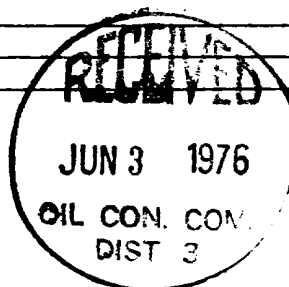
MOBIL OIL CORPORATION
P. O. Box 633
Midland, Texas 79701

TWELVE-POINT SURFACE USE PLAN FOR
DRILLING OPERATIONS ON FEDERAL LEASES

Lease Name: Jicarilla "G" Well No. 4-A
Well Location: 990' FNL & 990' FWL, Sec. 26, T27N, R3W
Field: Blanco Mesaverde
County: Rio Arriba State: New Mexico

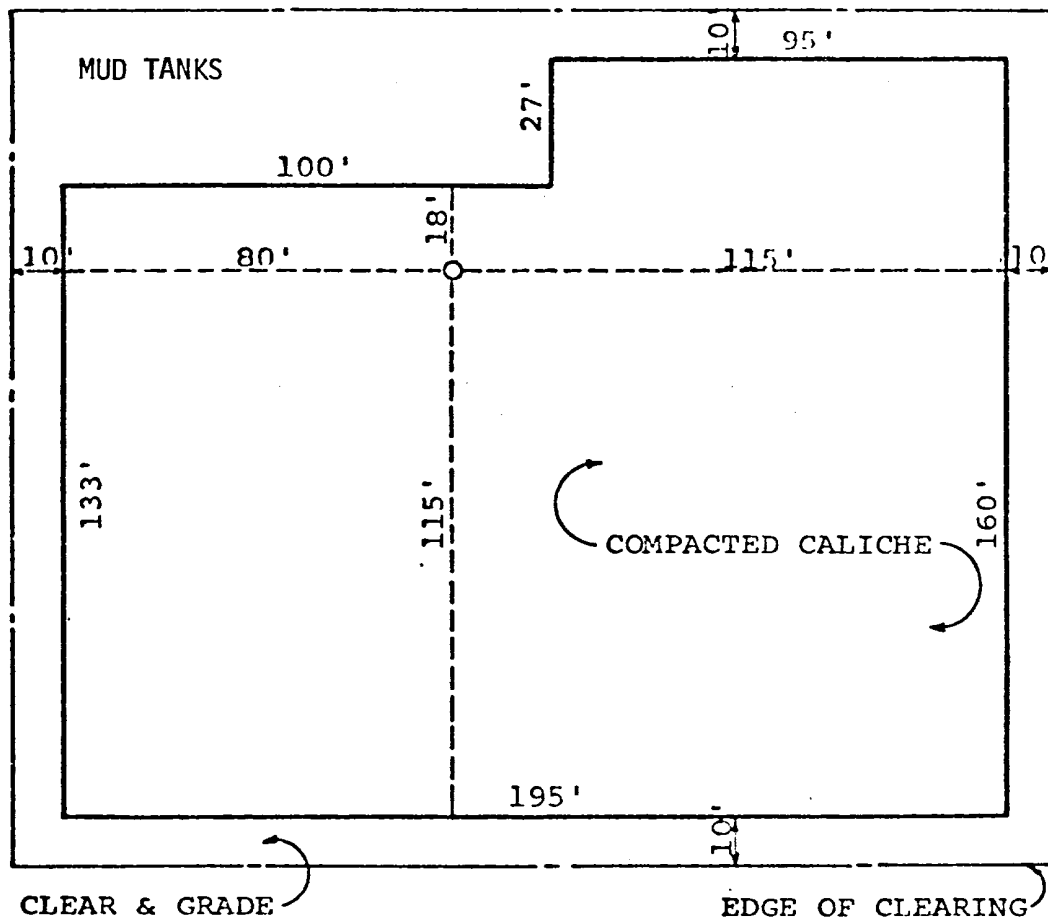
1. * Existing roads including location of the exit from the main highway.
2. * Planned access roads.
3. * Location of wells.
4. * Lateral roads to well location.
5. * Location of tank batteries and flow lines.
6. Location and types of water supply: Water will be trucked to well site.
7. Methods for handling waste disposal: Waste will be burned, buried and/or hauled from the well site.
8. Location of camps: (None)
9. Location of air strips: (none)
10. Location layout to include position or rig, mud tanks, reserve pits, burn pits, pipe racks, etc.: (See attached diagram of proposed rig layout)
11. Plans for restoration of the surface: Pits will be backfilled and levelled to original grade and left for return of natural vegetation. The pad will be left in place for well servicing.
12. Any other information that may be used in evaluating the impact on environment: Falls in small draw on northwest slope of hill with oak brush.

* Shown on attached map.





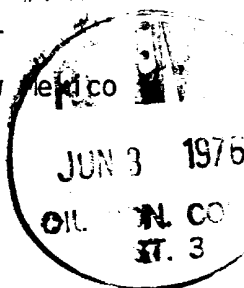
RESERVE PIT LOCATION



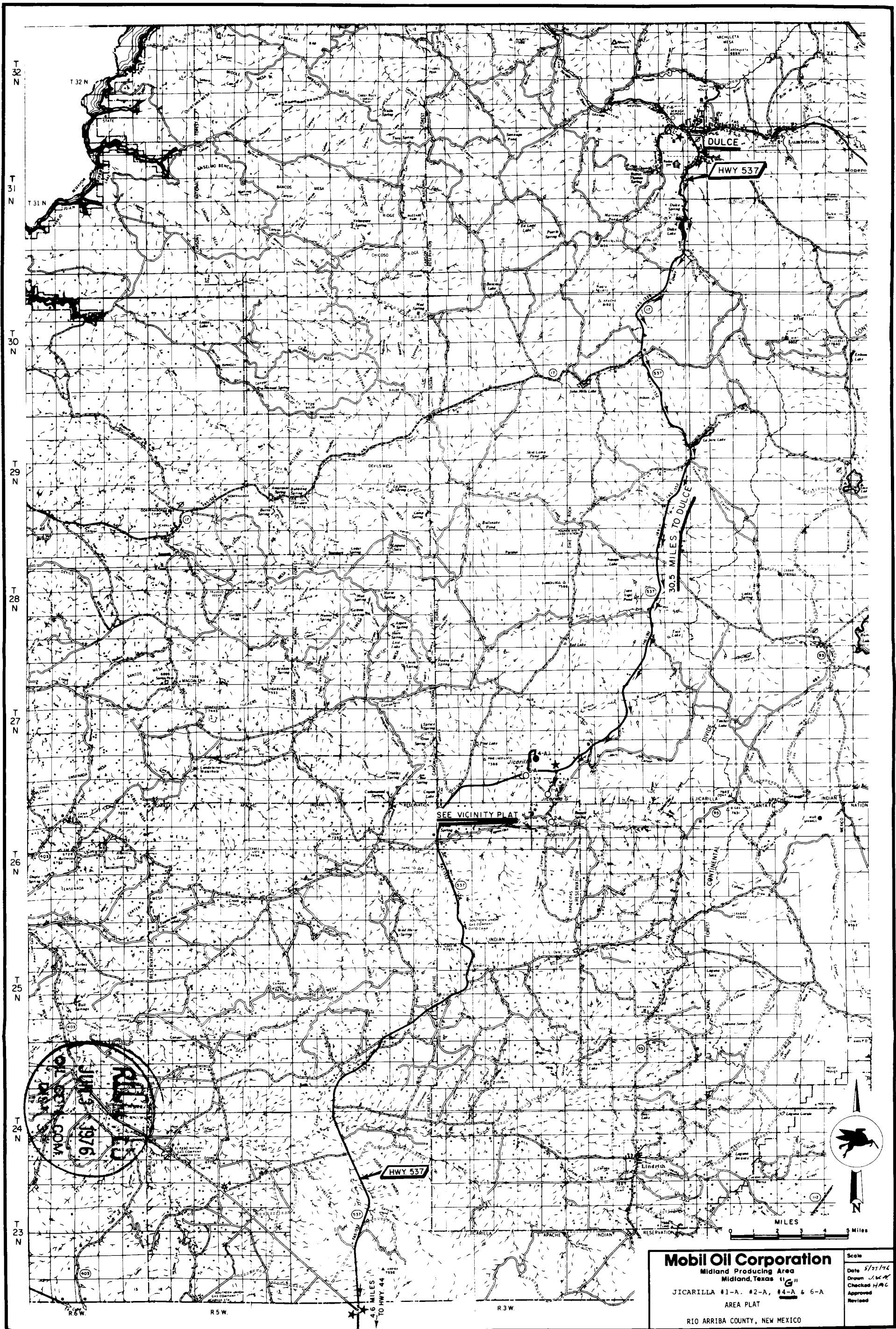
APPROXIMATELY 792 C.Y. CALICHE
REQUIRED FOR 6" COMPACTED PAD.

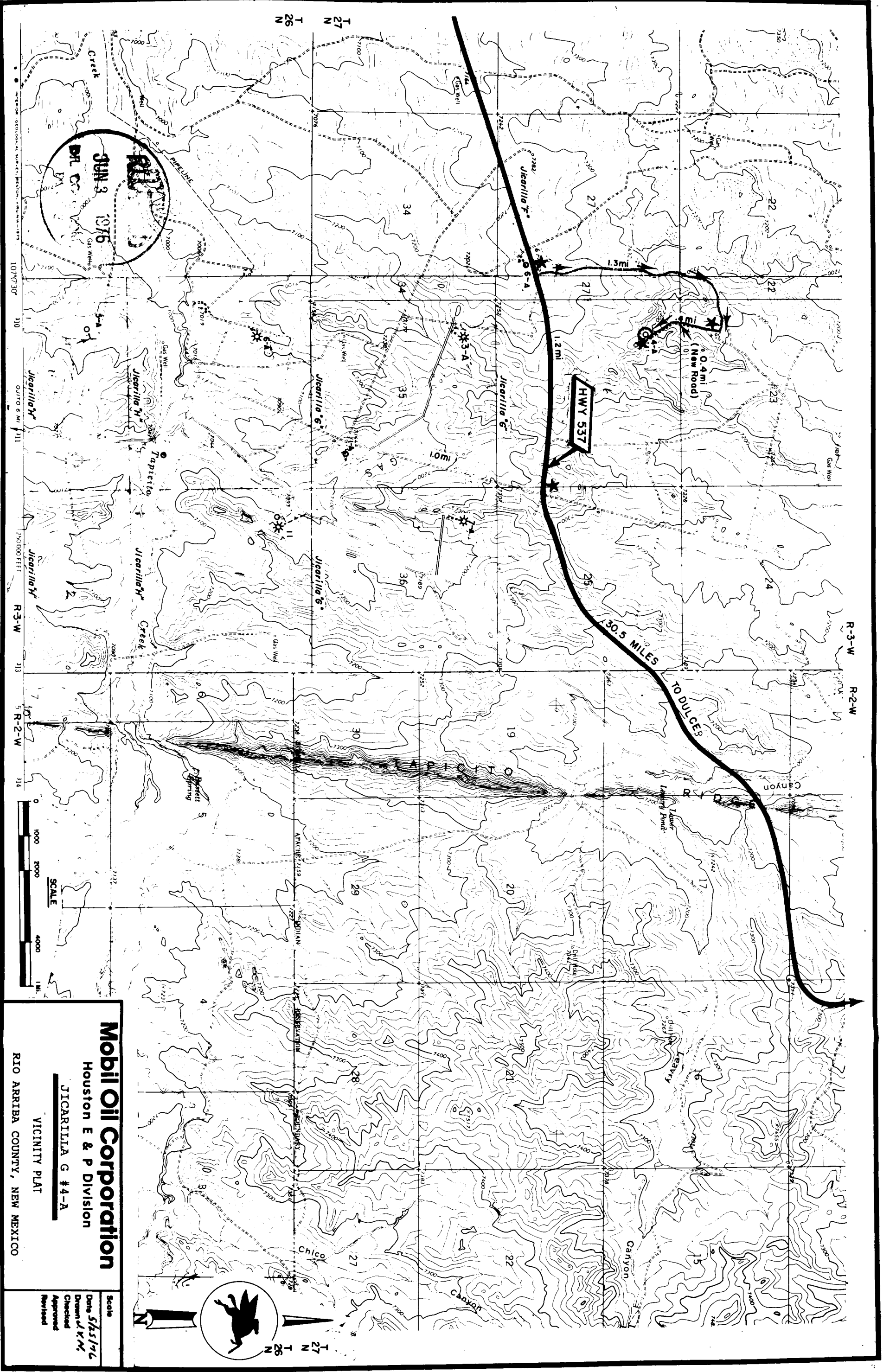
V - Door to North

Jicarilla "G", Well #4-A
990' FWL & 990' FNL
Sec. 26, T27N, R3W
Rio Arriba Co., New Mexico



NO.	DATE	BY	ALTERATION
STANDARD LOCATION PLAN 5000'-7000' DEEP WELLS ON STABLE SOIL			
MOBIL OIL CORPORATION HOUSTON E&P DIVISION			
DRAWN DLT		DWG. NO.	
CHECKED		A-322	
SCALE 1" = 40'		DATE 6-1-76	





REL
JUN 3 1976
DR. CS.

SCALE

Mobil Oil Corporation

Houston E & P Division

JICARILLA G #4-A

VICINITY PLAT

RIO ARRIBA COUNTY, NEW MEXICO

Scale
Date 5/25/76
Drawn J.R.M.
Checked
Approved
Revised

Mobil Oil Corporation

P. O. BOX 633
MIDLAND, TEXAS 79701

May 25, 1976

United States Geological Survey (6)
Durango District
P. O. Box 1809
Durango, Colorado 81301

Attention: Mr. Jerry W. Long

DRILLING APPLICATION
MOBIL OIL CORPORATION'S
JICARILLA "G", WELL #4-A
BLANCO MESAVERDE POOL
RIO ARriba COUNTY, NEW MEXICO

Gentlemen:

Mobil Oil Corporation respectfully requests authority to drill the subject well. Six copies each of the following documents are submitted in support of this request.

1. Form 9-331-C, Application to Drill
2. Diagrammatic Sketch of Blowout Preventer Program
3. Twelve Point Surface Use Plan, which includes:
 - (a) a rig layout and location plan
 - (b) An area map
 - (c) A vicinity plat showing roads
4. New Mexico Oil Conservation Commission Form C-102 (Acreage Dedication Plat)

Should additional information be required, please advise.

Yours very truly,



J. A. Morris
Regulatory Engineering Supervisor

ADBond/cs
Attachments

