

UNITED STATES
DEPARTMENT OF THE INTERIOR
GEOLOGICAL SURVEY

30-039-21381

5. LEASE DESIGNATION AND SERIAL NO.

SF 079527

6. IF INDIAN, ALLOTTEE OR TRIBE NAME

7. UNIT AGREEMENT NAME

San Juan 27-4 Unit

8. FARM OR LEASE NAME

San Juan 27-4 Unit

9. WELL NO.

135

10. FIELD AND POOL, OR WILDCAT

Blanco Mesa Verde

11. SEC., T., R., M., OR B.L.K.
AND SURVEY OR AREA

Sec. 36, T-27-N, R-4-W

N. M. P. M.

12. COUNTY OR PARISH

13. STATE

Rio Arriba

N. M.

APPLICATION FOR PERMIT TO DRILL, DEEPEN, OR PLUG BACK

1a. TYPE OF WORK

DRILL ☒DEEPEN ☐PLUG BACK ☐

b. TYPE OF WELL

OIL
WELL ☐GAS
WELL ☒

OTHER

SINGLE
ZONE ☒MULTIPLE
ZONE ☐

2. NAME OF OPERATOR

El Paso Natural Gas Company

3. ADDRESS OF OPERATOR

Box 990, Farmington, New Mexico 87401

4. LOCATION OF WELL (Report location clearly and in accordance with any State requirements.)*

At surface

1030'N, 1660'E

At proposed prod. zone

14. DISTANCE IN MILES AND DIRECTION FROM NEAREST TOWN OR POST OFFICE*

15. DISTANCE FROM PROPOSED*

LOCATION TO NEAREST
PROPERTY OR LEASE LINE, FT.
(Also to nearest drilg. unit line, if any)

16. NO. OF ACRES IN LEASE

18. DISTANCE FROM PROPOSED LOCATION*

TO NEAREST WELL, DRILLING, COMPLETED,
OR APPLIED FOR, ON THIS LEASE, FT.

19. PROPOSED DEPTH

6565'

17. NO. OF ACRES ASSIGNED
TO THIS WELL

320.00

20. ROTARY OR CABLE TOOLS

Rotary

21. ELEVATIONS (Show whether DF, RT, GR, etc.)

22. APPROX. DATE WORK WILL START*

23.

PROPOSED CASING AND CEMENTING PROGRAM

SIZE OF HOLE	SIZE OF CASING	WEIGHT PER FOOT	SETTING DEPTH	QUANTITY OF CEMENT
13 3/4"	9 5/8"	32.3#	200'	224 cu. ft. to circ. to surface
8 3/4"	7"	20#	4400'	202 cu. ft. to cover Ojo Alamo
6 1/4"	4 1/2" Liner	10.5#	4250-6565'	403 cu. ft. to fill to 4250'

Selectively perforate and sand water fracture the Mesa Verde formation

A 3000 psi WP and 6000 psi test double gate preventor equipped with blind and pipe rams will be used for blow out prevention on this well.

The gas is dedicated



The E/2 of Sec. 36 is dedicated to this well.

IN ABOVE SPACE DESCRIBE PROPOSED PROGRAM: If proposal is to deepen or plug back, give data on present productive zone and proposed new productive zone. If proposal is to drill or deepen directionally, give pertinent data on subsurface locations and measured and true vertical depths. Give blowout preventer program, if any.

24.

SIGNED

A. G. Suero

TITLE

Drilling Clerk

DATE

April 7, 1977

(This space for Federal or State office use)

PERMIT NO.

APPROVAL DATE

APPROVED BY

TITLE

DATE

CONDITIONS OF APPROVAL, IF ANY:

*See Instructions On Reverse Side

NEW MEXICO OIL CONSERVATION COMMISSION
WELL LOCATION AND ACREAGE DEDICATION PLAT

Form C-102
Supersedes C-128
Effective 1-1-65

All distances must be from the outer boundaries of the Section.

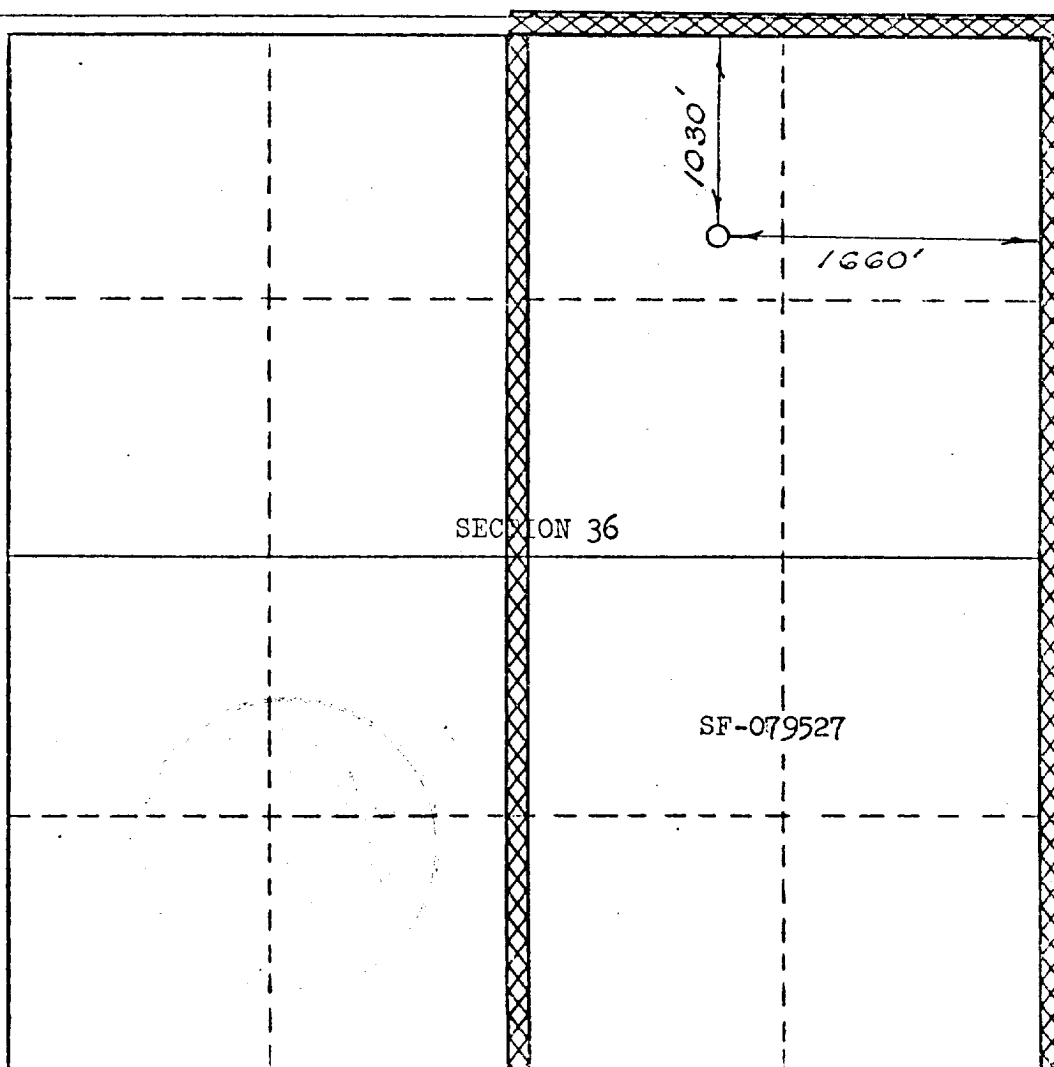
Operator EL PASO NATURAL GAS COMPANY		Lease SAN JUAN 27-4 UNIT (SF-079527)		Well No. 135
Unit Letter B	Section 36	Township 27-N	Range 4-W	County RIO ARriba
Actual Footage Location of Well: 1030 feet from the NORTH line and 1660 feet from the EAST line				
Ground Level Elev. 7243	Producing Formation MESA VERDE	Pool BLANCO MESA VERDE	Dedicated Acreage: 320.00 Acres	

1. Outline the acreage dedicated to the subject well by colored pencil or hachure marks on the plat below.
2. If more than one lease is dedicated to the well, outline each and identify the ownership thereof (both as to working interest and royalty).
3. If more than one lease of different ownership is dedicated to the well, have the interests of all owners been consolidated by communitization, unitization, force-pooling, etc?

☒ Yes ☐ No If answer is "yes," type of consolidation Unitization

If answer is "no," list the owners and tract descriptions which have actually been consolidated. (Use reverse side of this form if necessary.)

No allowable will be assigned to the well until all interests have been consolidated (by communitization, unitization, forced-pooling, or otherwise) or until a non-standard unit, eliminating such interests, has been approved by the Commission.



CERTIFICATION

I hereby certify that the information contained herein is true and complete to the best of my knowledge and belief.

J. P. Duico

Name

Drilling Clerk

Position

El Paso Natural Gas Company

Company

April 7, 1977

Date

I hereby certify that the well location shown on this plat was plotted from field notes of actual surveys made by me or under my supervision, and that the same is true and correct to the best of my knowledge and belief.

Date Surveyed

MARCH 4, 1977

Registered Professional Engineer and/or Land Surveyor

David W. Allen

Certificate No.

1760

300 600 900 1320 1650 1980 2310 2640 2000 1500 1000 500 0

Multi-Point Surface Use Plan
San Juan 27-4 Unit #135

1. Existing Road - Please refer to Map No. 1 which shows the existing roads. New roads which will be required have been marked on this map. All existing and new roads will be properly maintained during the duration of this project.
2. Planned Access Roads - Please refer to Map No. 1. The grade of the access roads will be consistent with that of the local terrain. The road surface will not exceed twenty feet (20') in width. Upon completion of the project, the access road will be adequately drained to control soil erosion. Drainage facilities may include ditches, water bars, culverts or any other measure deemed necessary by trained Company personnel to insure proper drainage. Gates and/or cattleguards will be installed if necessary.
3. Location of Existing Wells - Please refer to Map No. 2
4. Location of Tank Batteries, Production Facilities, and Production Gathering and Service Lines - Please refer to Maps No. 1 and No. 2. Map No. 2 shows the existing gas gathering lines. Map No. 1 shows the existing roads and new proposed access roads. All known production facilities are shown on these two maps.
5. Location and Type of Water Supply - Water for the proposed project will be obtained from a water hole located Tapacito Water Hole.
6. Source of Construction Materials - No additional materials will be required to build either the access road or the proposed location.

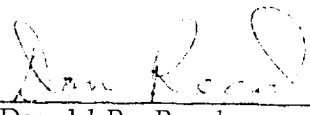
7. Methods of Handling Waste Materials - All garbage and trash materials will be put into a burn pit shown on the attached location Plat No. 1. When clean-up operations are begun on the proposed project, the burn pit with its refuse will be buried to a depth of at least three feet (3'). A latrine, the location of which is also shown on Plat No. 1 will be provided for human waste. If large amounts of liquids are left in the reserve pit after completion of the project, the pit will be fenced until the liquids have had adequate time to dry. The location clean-up will not take place until such time as the reserve pit can be properly covered over to prevent run-off from carrying any of these materials into the watershed. No earthen pit will be located on natural drainages; all earthen pits will be so constructed as to prevent leakage from occurring.
8. Ancillary Facilities - No camps or airstrips will be associated with this project.
9. Wellsite Layout - Please refer to the attached Plat No. 1.
10. Plans for Restoration of the Surface - After completion of the proposed project, the location will be cleaned and leveled. The location will be left in such a condition that will enable reseeding operations to be carried out. ***
The reseeding operation will be performed during the time period set forth by the regulatory body. The location production equipment will be painted Forest Green
11. Other Information - The terrain is rolling hills covered with pine trees and oak brush. Deer graze the proposed project site.

*** Crested Wheat - 4#/Acre; Pubescent Wheat - 6#/Acre; Sand Drop - 1#/Acre
Ranger Alfalfa - 1#/Acre

12. Operator's Representative - W. D. Dawson, Post Office Box 990,
Farmington, New Mexico 87401

13. Certification - I hereby certify that I, or persons under my direct supervision, have inspected the proposed drillsite and access route; that I am familiar with the conditions which presently exist; that the statements made in this plan are, to the best of my knowledge, true and correct; and, that the work associated with the operations proposed herein will be performed by El Paso Natural Gas Company and its contractors and sub-contractors in conformity with this plan and the terms and conditions under which it is approved.

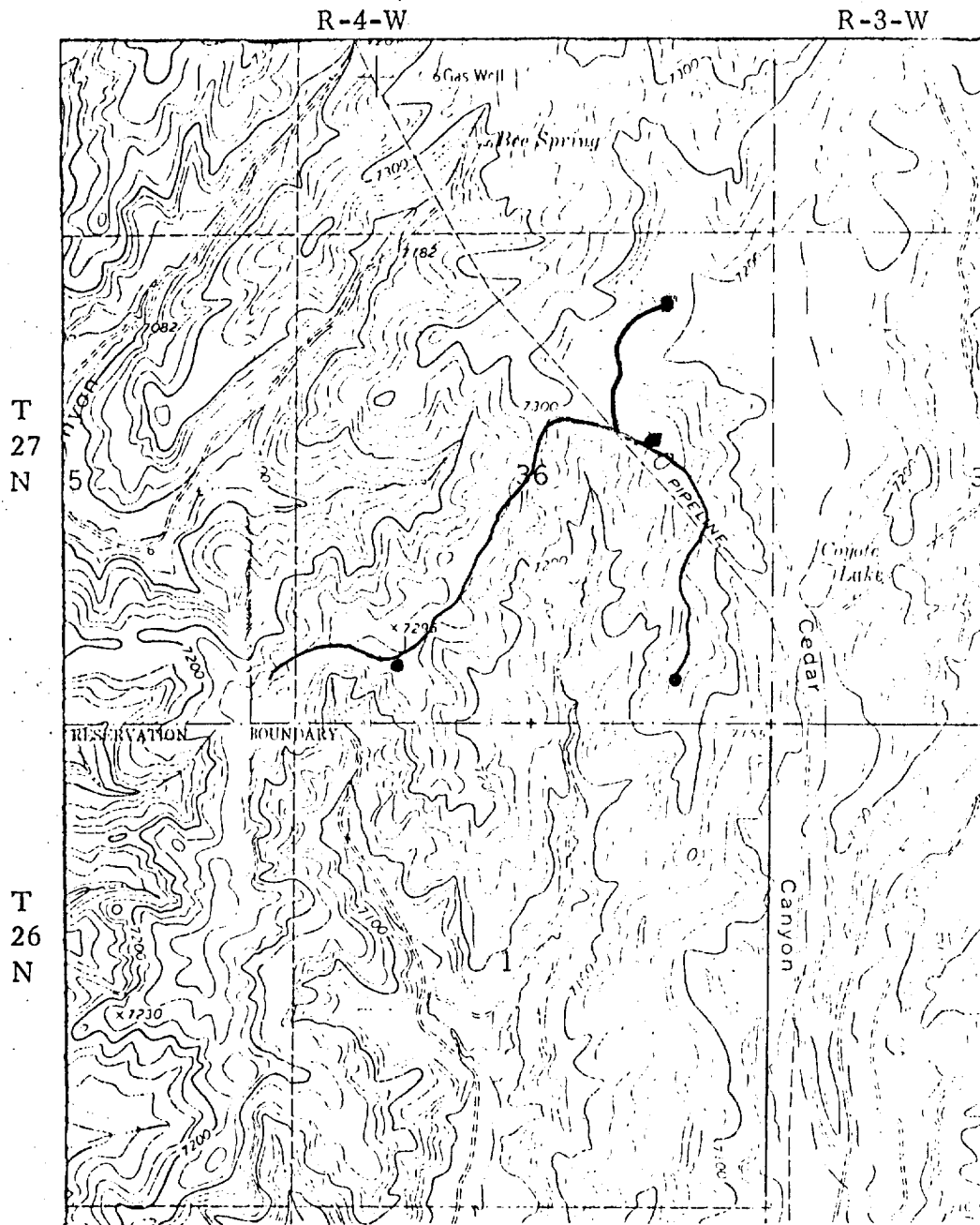
April 7, 1977



Donald R. Read
Division Drilling Engineer

DRR:dgb

EL PASO NATURAL GAS COMPANY
 SAN JUAN 27-4 UNIT #135
 NE 36-27-4

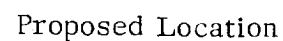


MAP #1

LEGEND OF RIGHT-OF-WAYS

EXISTING ROADS	— — — —
EXISTING PIPELINES	+ + +
EXISTING ROAD & PIPELINE	- + - + -
PROPOSED ROADS	— — — —
PROPOSED PIPELINES	+ + +
PROPOSED ROAD & PIPELINE	- + - + -

RAW



Operations Plan
San Juan 27-4 Unit #135

April 7, 1977

I. Location: 1030'N, 1660'E, Sec. 36, T-27-N, R-4-W, Rio Arriba County, New Mexico
Field: Blanco Mesa Verde Elevation: 6253' DF

II. Geology:

A. Formation Tops:	Surface	San Jose	Lewis	4200'
	Ojo Alamo	3535'	Mesa Verde	5810'
	Kirtland	3640'	Menefee	5890'
	Fruitland	3805'	Point Lookout	6165'
	Pic.Cliffs	4030'	Total Depth	6565'

B. Logging Program: GR-Ind. and GR-Density at Total Depth.

C. Coring Program: none

D. Natural Gauges: 5800, 5880, 6155' and at Total Depth.
Also gauge any noticeable increase in gas. Record all gauges in daily drilling report and on morning report.

III. Drilling:

A. Mud Program: mud from surface to 4400' . Gas from intermediate casing to Total Depth.

IV. Materials:

A. Casing Program:	<u>Hole Size</u>	<u>Depth</u>	<u>Casing Size</u>	<u>Wt.&Grade</u>
	13 3/4"	200'	9 5/8"	32.3# H-40
	8 3/4"	4400'	7"	20.0# K-55
	6 1/4"	4250-6565	4 1/2"	10.5# K-55

B. Float Equipment: 9 5/8" surface casing - Larkin guide shoe (fig. 102)
7" intermediate casing - Dowell guide shoe (fig. 50101) and Dowell self-fill insert float valve (fig. 53003), 5 B&W stabilizers (Prod. No. 637085) every other joint above shoe. Run float two joints above shoe.

4 1/2" liner - T.I.W. liner hanger with neoprene packoff. Larkin geyser shoe (fig. 222) and Larkin flapper type float collar (fig. 404 M&F).

C. Tubing: 6565' of 2 3/8", 4.7#, J-55 8rd EUE tubing with a common pump seating nipple above perforated pup joint with bull plugged full joint for mud anchor on bottom.

D. Wellhead Equipment: 10" 900 x 9 5/8" casing head. 10" 900 x 6" 900 xmas tree.

Operations Plan - San Juan 27-4 Unit #135

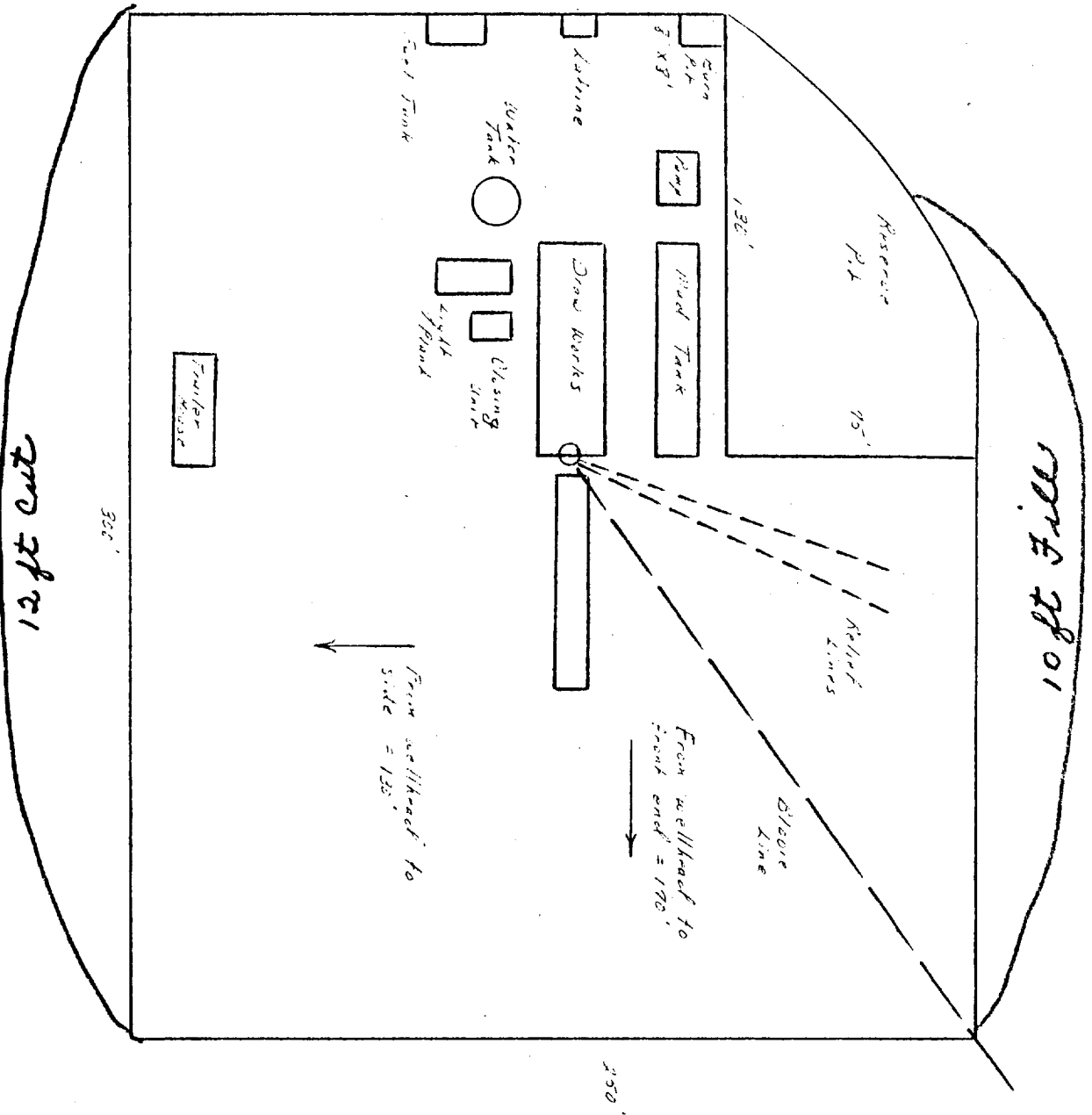
V. Cementing:

9 5/8" surface casing - use 190 sks. of Class "B" cement with 1/4# gel-flake per sack and 3% calcium chloride (224 cu.ft. of slurry, 100% excess to circulate to surface). WOC 12 hours. Test casing to 600#/30 minutes.

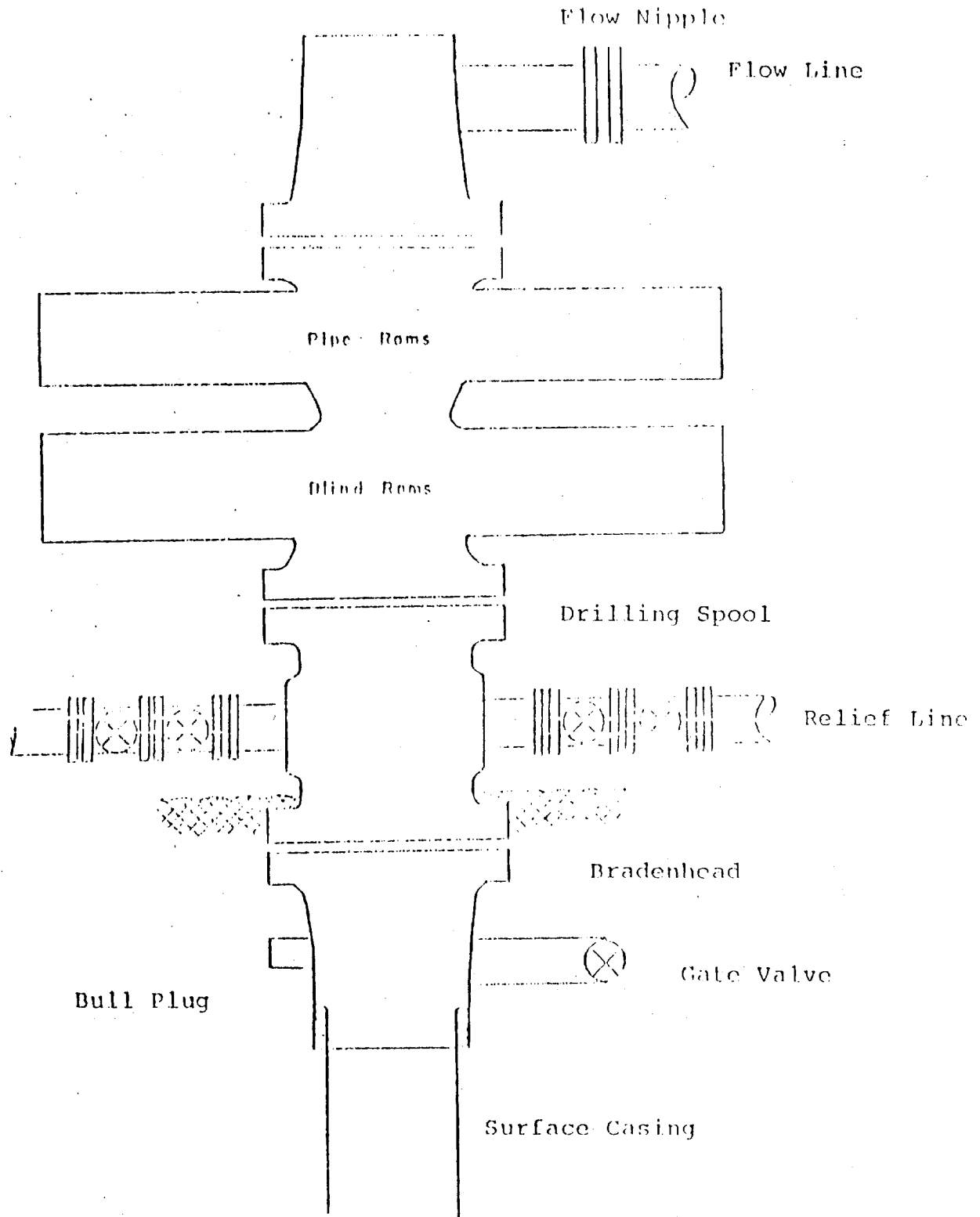
7" intermediate casing - use 32 sks. of 65/35 Class "B" Poz with 12% gel (15.52 gallons of water per sack) followed by 100 sks. of Class "B" with 2% calcium chloride (202 cu.ft. of slurry, 50% excess to cover Ojo Alamo). Run temperature survey at 8 hours. WOC 12 hours. Test casing to 1200#/30 minutes.

4 1/2" liner - precede cement with 20 barrels of gel water (2 sks. gel) Cement with 224 sks. of Class "B" cement with 4% gel, 1/4 cu.ft. of fine gilsonite per sack and 0.6% Halad-9 (403 cu.ft. of slurry, 70% excess to circulate liner).

El Paso Natural Gas Company
 Typical location plot for these waste and Dakota wells



Typical B.O.P. Installation
for Mesa Verde Well



10" 900 x 9 5/8" casing head
10" 900 x 6" 900 xmas tree