

UNITED STATES  
DEPARTMENT OF THE INTERIOR  
GEOLOGICAL SURVEY

30-039-21392

APPLICATION FOR PERMIT TO DRILL, DEEPEN, OR PLUG BACK

1a. TYPE OF WORK  
 DRILL       DEEPEN       PLUG BACK

b. TYPE OF WELL  
 OIL WELL       GAS WELL       OTHER   
 SINGLE ZONE       MULTIPLE ZONE

2. NAME OF OPERATOR  
 El Paso Natural Gas Company

3. ADDRESS OF OPERATOR  
 PO Box 990, Farmington, NM 87401

4. LOCATION OF WELL (Report location clearly and in accordance with any State requirements.)\*  
 At surface      1190'S, 1800'E  
 At proposed prod. zone

14. DISTANCE IN MILES AND DIRECTION FROM NEAREST TOWN OR POST OFFICE\*

15. DISTANCE FROM PROPOSED\* LOCATION TO NEAREST PROPERTY OR LEASE LINE, FT. (Also to nearest drlg. unit line, if any)

16. NO. OF ACRES IN LEASE

17. NO. OF ACRES ASSIGNED TO THIS WELL  
 160.00

18. DISTANCE FROM PROPOSED LOCATION\* TO NEAREST WELL, DRILLING, COMPLETED, OR APPLIED FOR, ON THIS LEASE, FT.

19. PROPOSED DEPTH  
 4150'

20. ROTARY OR CABLE TOOLS  
 Rotary

21. ELEVATIONS (Show whether DF, RT, GR, etc.)  
 6653' GL

22. APPROX. DATE WORK WILL START\*

23. PROPOSED CASING AND CEMENTING PROGRAM

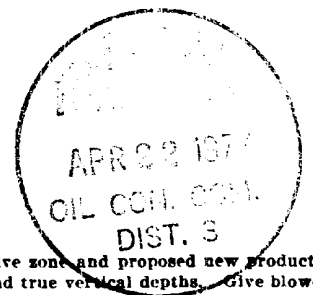
SIZE OF HOLE	SIZE OF CASING	WEIGHT PER FOOT	SETTING DEPTH	QUANTITY OF CEMENT
12 1/4"	8 5/8"	24.0#	120'	106 cu.ft. to circulate
6 3/4"	2 7/8"	6.4#	4150'	588 cu.ft. to cover Ojo Alamo

Selectively perforate and sandwater fracture the Chacra formation.

A 3000 psi WP and 6000 psi test double gate preventer equipped with blind and pipe rams will be used for blow out prevention on this well.

This gas is dedicated.

The SE/4 of Section 28 is dedicated to this well.



IN ABOVE SPACE DESCRIBE PROPOSED PROGRAM: If proposal is to deepen or plug back, give data on present productive zone and proposed new productive zone. If proposal is to drill or deepen directionally, give pertinent data on subsurface locations and measured and true vertical depths. Give blowout preventer program, if any.

24. SIGNED A. G. Brisco TITLE Drilling Clerk DATE April 14, 1977

(This space for Federal or State office use)

PERMIT NO. \_\_\_\_\_ APPROVAL DATE \_\_\_\_\_

APPROVED BY \_\_\_\_\_ TITLE \_\_\_\_\_ DATE \_\_\_\_\_

CONDITIONS OF APPROVAL, IF ANY:

*Okal*

*LH*

\*See Instructions On Reverse Side

NEW MEXICO OIL CONSERVATION COMMISSION  
WELL LOCATION AND ACREAGE DEDICATION PLAT

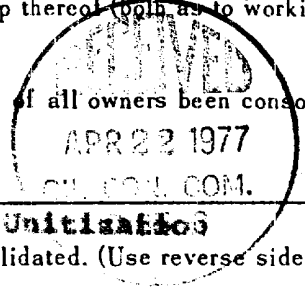
Form C-102  
Supersedes C-128  
Effective 1-1-65

All distances must be from the outer boundaries of the Section.

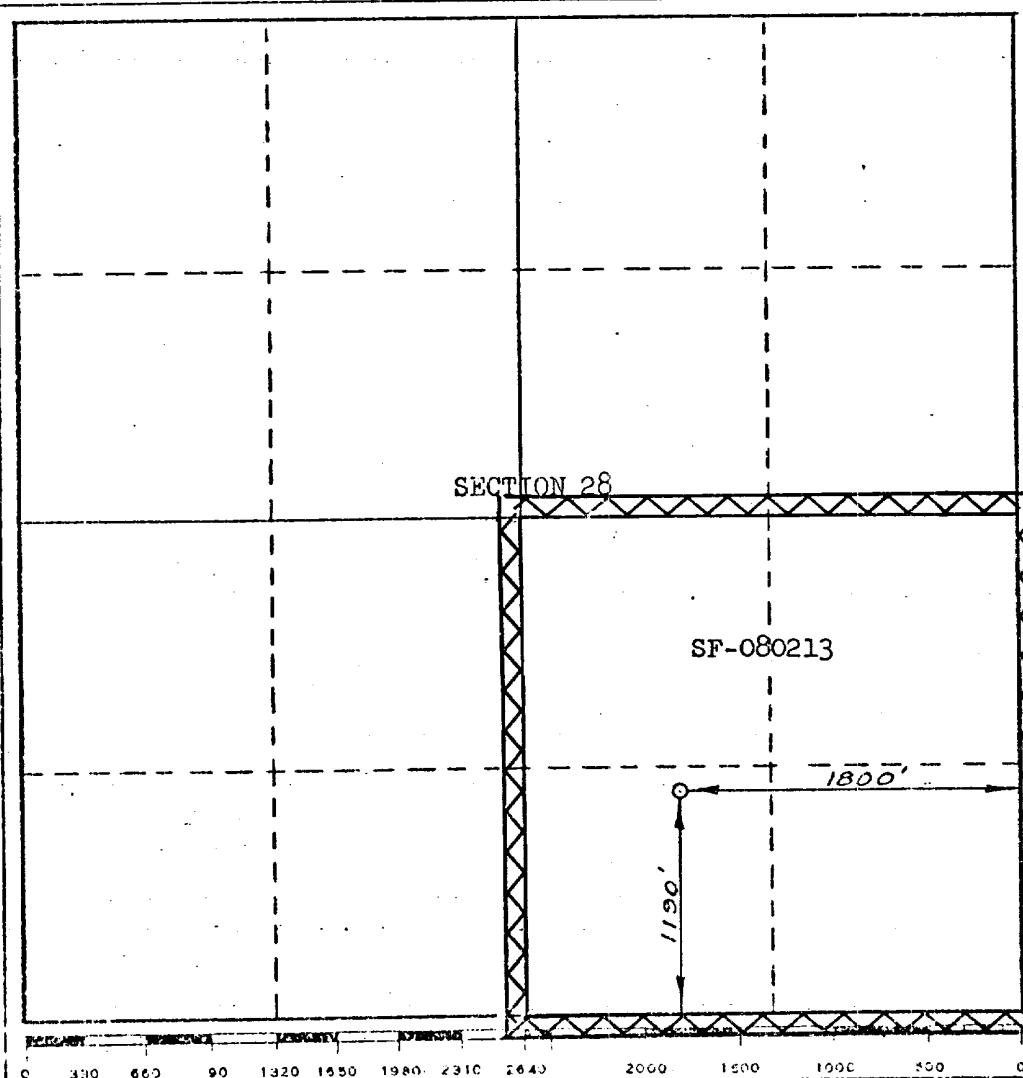
Operator <b>EL PASO NATURAL GAS COMPANY</b>		Lease <b>RINCON UNIT (SF-080213)</b>		Well No. <b>220</b>
Unit Letter <b>0</b>	Section <b>28</b>	Township <b>27-N</b>	Range <b>7-W</b>	County <b>RIO ARRIBA</b>
Actual Footage Location of Well: <b>1190</b> feet from the <b>SOUTH</b> line and <b>1800</b> feet from the <b>EAST</b> line				
Ground Level Elev. <b>6653</b>	Producing Formation <b>CHACRA</b>	Pool <b>LARGO CHACRA</b>	Dedicated Acreage: <b>160.00</b> Acres	

1. Outline the acreage dedicated to the subject well by colored pencil or hachure marks on the plat below.
2. If more than one lease is dedicated to the well, outline each and identify the ownership thereof (both as to working interest and royalty).
3. If more than one lease of different ownership is dedicated to the well, have the interests of all owners been consolidated by communitization, unitization, force-pooling, etc?

Yes  No If answer is "yes," type of consolidation \_\_\_\_\_  
 If answer is "no," list the owners and tract descriptions which have actually been consolidated. (Use reverse side of this form if necessary.) \_\_\_\_\_



No allowable will be assigned to the well until all interests have been consolidated (by communitization, unitization, forced-pooling, or otherwise) or until a non-standard unit, eliminating such interests, has been approved by the Commission.



<b>CERTIFICATION</b>	
I hereby certify that the information contained herein is true and complete to the best of my knowledge and belief.	
Original Signed by <b>D. G. Brisco</b>	
Name	<b>Drilling Dept</b>
Position	<b>El Paso Natural Gas Co.</b>
Company	<b>April 14, 1977</b>
Date	
I hereby certify that the well location shown on this plat was plotted from field notes of actual surveys made by me or under my supervision, and that the same is true and correct to the best of my knowledge and belief.	
Date Surveyed	<b>MARCH 31, 1977</b>
Registered Professional Engineer and Surveyor <i>David Oliver</i>	
Certificate No.	<b>1760</b>