

submitted in lieu of Form 3160-5

UNITED STATES  
DEPARTMENT OF THE INTERIOR  
BUREAU OF LAND MANAGEMENT

Sundry Notices and Reports on Wells

1. Type of Well  
GAS

2. Name of Operator  
MERIDIAN OIL

3. Address & Phone No. of Operator  
PO Box 4289, Farmington, NM 87499 (505) 326-9700

4. Location of Well, Footage, Sec., T, R, M  
990' FNL, 1652' FWL Sec. 22, T-27-N, R-3-W, NMPM

5. Lease Number  
Jic. Contract 94  
6. If Indian, All. or  
Tribe Name  
Jicarilla Apache  
7. Unit Agreement Name

8. Well Name & Number  
Jicarilla 94 #3A  
9. API Well No.  
30-039-  
10. Field and Pool  
~~Blanco MV~~/Gavilan PC  
11. County and State  
Rio Arriba Co, NM

12. CHECK APPROPRIATE BOX TO INDICATE NATURE OF NOTICE, REPORT, OTHER DATA

Type of Submission

☒ Notice of Intent  
☐ Subsequent Report  
☐ Final Abandonment

Type of Action

☒ Abandonment  
☒ Recompletion  
☐ Plugging Back  
☐ Casing Repair  
☐ Altering Casing  
☐ Other -  
☐ Change of Plans  
☐ New Construction  
☐ Non-Routine Fracturing  
☐ Water Shut off  
☐ Conversion to Injection

13. Describe Proposed or Completed Operations

The Pictured Cliffs will be perforated and stimulated in the following manner: TOOH w/tbg. Set RBP above existing Mesa Verde perms. Run CBL to verify TOC. If good top is not seen at least 50' above proposed top Pictured Cliffs perf, remedial cement work will be performed. The Pictured Cliffs will be perf'd 3712-3786' and stimulated with approximately 1500 gal acid and fracture stimulated. Run after frac GR log to verify if frac stayed in zone. TIH w/2 3/8" tbg landed @ 6150'. Application has been made to NMOCD for commingling. Attached is a procedure and wellbore diagram.

14. I hereby certify that the foregoing is true and correct.

Signed [Signature] (BA) Title Regulatory Affairs Date 4/14/94

(This space for Federal or State Office use)  
APPROVED BY [Signature] Title [Signature] Date APR 22 1994  
CONDITION OF APPROVAL, if any

NMOCD

NEW MEXICO OIL CONSERVATION COMMISSION  
WELL LOCATION AND ACREAGE DEDICATION PLAT

Form O-102  
Supersedes O-128  
Effective 1-1-65

All distances must be from the outer boundaries of the Section.

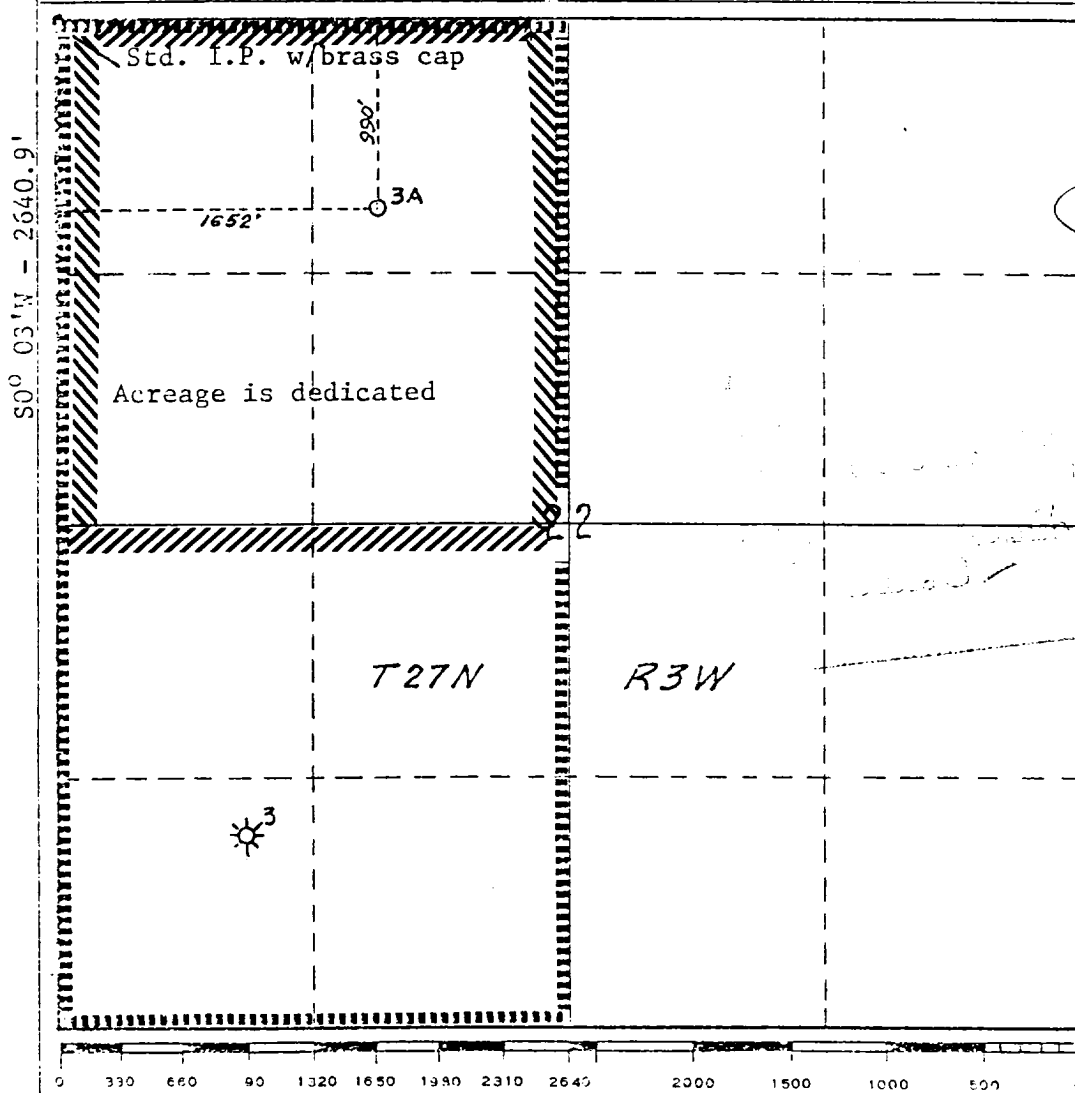
Owner <b>Meridian Oil Inc.</b>			Lease <b>Jicarilla 94</b>		Well No. <b>3 - A</b>
Section <b>C</b>	Section <b>22</b>	Township <b>27N</b>	Range <b>3W</b>	County <b>Rio Arriba</b>	
Actual Well Location of Well:					
<b>990</b> feet from the <b>North</b> line and		<b>1652</b> feet from the <b>West</b> line			
Drill depth elev. <b>7057'</b>	Producing Formation <b>Mesaverde/Pic.Cliffs</b>	Pool <b>Blanco Mesaverde/Gavilan</b>	Dedicated Acreage: <b>320/160</b> Acres		

1. Outline the acreage dedicated to the subject well by colored pencil or hachure marks on the plat below.
2. If more than one lease is dedicated to the well, outline each and identify the ownership thereof (both as to working interest and royalty).
3. If more than one lease of different ownership is dedicated to the well, have the interests of all owners been consolidated by communitization, unitization, force-pooling, etc?

☐ Yes ☐ No If answer is "yes," type of consolidation \_\_\_\_\_

If answer is "no," list the owners and tract descriptions which have actually been consolidated. (Use reverse side of this form if necessary.) \_\_\_\_\_

No allowable will be assigned to the well until all interests have been consolidated (by communitization, unitization, forced-pooling, or otherwise) or until a non-standard unit, eliminating such interests, has been approved by the Commission.  
**N89° 50'W - 2643.2'**



CERTIFICATION

I hereby certify that the information contained herein is true and complete to the best of my knowledge and belief.

Name  
**Peggy Bradfield**  
Position  
**Regulatory Representative**  
Company  
**Meridian Oil Inc.**  
Date  
**4-14-94**

I hereby certify that the well location shown on this plat was plotted from field notes and actual survey made by me or under my supervision, and that the same is true and correct to the best of my knowledge and belief.

Date Surveyed  
**June 25, 1977**  
Registered Professional Engineer and/or Land Surveyor

**H. A. Carson, Jr.**

Certificate No.  
**5063**

## JICARILLA 94 #3A

### Unit C, Section 22, T27N, R03W Recommended Recompletion Procedure *Pictured Cliffs Pay Add & Completion*

Note: Notify BLM (761-8762) and NMOCD (334-6178) 24 hours prior to rig activity.

---

Inspect location and install and/or test rig anchors. Install 1 - 400 bbl rig tank and fill w/ 2% KCl water. Approximately 203 jts. 2-3/8" 4.7# J-55 tubing will be required (MOI, District Tools) for cleanout and production. Comply with all BLM, NMOCD, Jicarilla Apache, and MOI rules and regulations. Notify engineering when work has commenced. Hold Safety Meetings on a regular basis.

---

1. Install 3 X 400 bbl frac tanks and fill with 2% KCl water.
2. Hold Safety Meeting. MIRU. Place fire and safety equipment in easily accessible locations. NU relief line and blooie line to laydown flow tank. Obtain and record all wellhead pressures.
3. Blow down tubing. If tubing will not blow down, kill well with KCl water. PBTD is 6322'.
4. TOOH with 5956' of 2-3/8" 4.70# tubing, visually inspect and tally tubing.
5. RU wireline. RIH with 4-1/2" 10.5# guage ring and check pipe. PU Retrievable bridge plug, TIH and set bridge plug at 3990'. Run GR - CBL - CCL in 4-1/2 casing from bridge plug to Surface pipe (Stage two TOC at 560' by TS). Good TOC must be above 3650' to continue. Evaluate GR- CBL- CCL and send copy to production engineering.
6. TIH w/ Packer and one stand. Pressure test Packer and casing to 3000 psi. for 15 min. If pressure test fails, prepare to test and repair casing. Contact Production Engineering and a casing repair will be submitted. TOOH with Packer and one stand.

#### Main Pictured Cliffs Stimulation:

7. Select-Fire Perf. the following intervals w/ 3-1/8" HSC -3125-306. 12 gram Owen charges 0.31" holes w/ 12.02 " penetration. 2 jspf:

**3826' - 3838', 3841' - 3848', 3864' - 3880', 3898' - 3934'. (142 Holes)**

8. RD wireline. TIH w/ Packer and one stand.
9. RU stimulation company. **Hold Safety Meeting.** Pressure test surface treating lines to 4000 psi. **Maximum STP during acid job is 3000 psi.** Pump 3,500 gals 15% HCl w/additives at a rate of 6-10 BPM, attempt to ball-out the perforations. Drop a total of 210 7/8" RCN ball sealers (1.3sp.gr.) spaced evenly throughout the job. Record rates and pressures while attempting to achieve ball-out.

**Jicarilla 94 #3A  
Pictured Cliffs Pay-Add**

10. RD stimulation company. TOOH w/ Packer and one stand. RU wireline, run junk basket to knock-off/retrieve as many ballsealers as possible. TIH w/ Packer and one stand. RU stimulation company. Prepare to fracture stimulate the Main Pictured Cliffs.
11. Pressure test surface treating lines to 4000 psi. **Maximum treating pressure is 3000 psi.** Fracture stimulate the PC according to the attached procedure. Flow-back the well immediately using a variable choke manifold. Increase choke size as needed to keep the well from logging off, if possible. When pressures and flow rates allow, TOOH w/ Packer and one stand. PU Retrievable bridge plug, TIH and set bridge plug at 3800'.

**Upper Pictured Cliffs Stimulation:**

12. Select-Fire Perf. the following intervals w/ 3-1/8" HSC -3125-306, 12 gram Owen charges 0.31" holes w/ 12.02 " penetration, 2 jspf:

**3712' - 3720', 3732' - 3786'. (132 Holes)**

13. RD wireline. TIH w/ Packer and one stand.
14. RU stimulation company. **Hold Safety Meeting.** Pressure test surface treating lines to 4000 psi. **Maximum STP during acid job is 3000 psi.** Pump 4,000 gals 15% HCl w/additives at a rate of 6-10 BPM, attempt to ball-out the perforations. Drop a total of 198 7/8" RCN ball sealers (1.3sp.gr.) spaced evenly throughout the job. Record rates and pressures while attempting to achieve ball-out.
15. RD stimulation company. TOOH w/ Packer and one stand. RU wireline, run junk basket to knock-off/retrieve as many ballsealers as possible. TIH w/ Packer and one stand. RU stimulation company. Prepare to fracture stimulate the Upper Pictured Cliffs.
16. Pressure test surface treating lines to 4000 psi. **Maximum treating pressure is 3000 psi.** Fracture stimulate the PC according to the attached procedure. Flow-back the well immediately using a variable choke manifold. Increase choke size as needed to keep the well from logging off, if possible. When pressures and flow rates allow, TOOH w/ Packer and one stand.
17. TIH w/ retrieving head and 2-3/8" 4.70# workstring and clean out to the retrievable bridge plug @ 3800' with air until sand production is minimal. RIH with wireline and obtain a 24 hour Pressure Build-up test. Obtain pitot gauge for the Upper Pictured Cliffs formation. Record pitot gauge as the Upper Pictured Cliffs formation only. Latch onto the retrievable bridge plug and TOOH.
18. TIH w/ notched collar on 2-3/8" 4.70# workstring and clean out to the retrievable bridge plug @ 3990' with air until sand production is minimal. RIH with wireline and obtain a 24 hour Pressure Build-up test. Obtain pitot gauge for the Pictured Cliffs formation. Record pitot gauge as the Pictured Cliffs formation only. TOOH.

**Jicarilla 94 #3A  
Pictured Cliffs Pay-Add**

19. TIH w/ one joint 2-3/8" 4.7# J-55 tubing. 'F' nipple, expendable check, and 2-3/8" production tubing. Cleanout to 3990' with air. Land tubing @ +/-3930' (60' of rathole) and obtain final pitot gauge. Commingle application will be filed with the NMOCD and the RBP above the MV will be removed and the well commingled after four months of PC production evaluation. ND BOP. NU WH. Contact Production Operations for well tie-in. RD and MOL.

Review: \_\_\_\_\_  
Regional Engineer, AR9

Approved: ABA  
Drilling Superintendent

**Suggested Vendors:**

Wireline:	Blue Jet	325-5584
Bridge Plugs/PKR:	Mountain States	326-5141
Pressure Build-up:	Tefteller Inc.	325:8476
Tubing:	MOI, District Tools	326-9826
Stimulation:	BJ Services	327-6288
Production Oper.:	Bruce Voiles	326-9571
Engineering:	Brian Ault	326-9871 w 326-6613 h

# Jicarilla 94 #3A

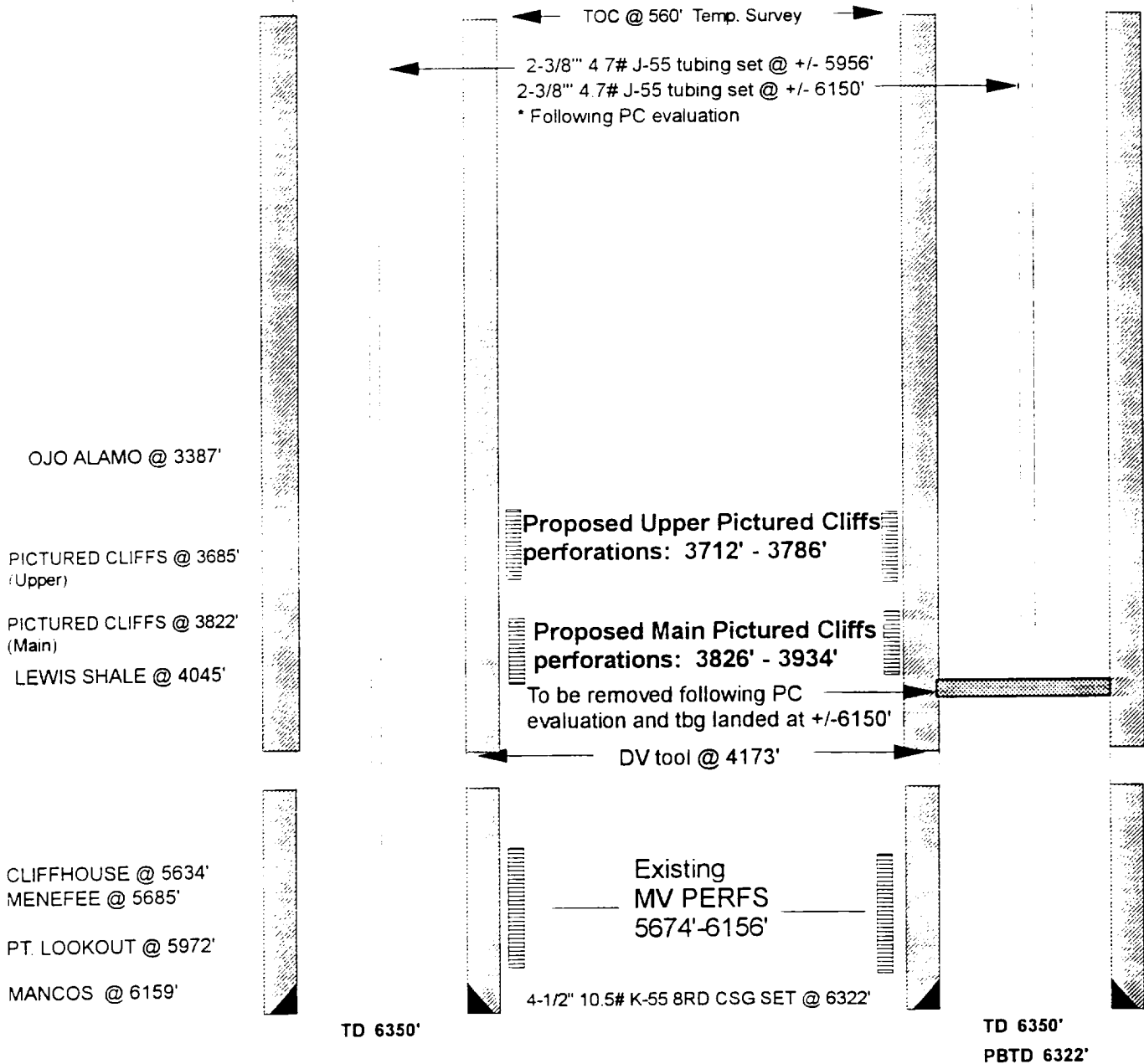
Unit C, Sec. 22, T27N, R3W  
Rio Arriba Co., NM  
*Pictured Cliffs Pay Add and Stimulation*

**CURRENT**

**PROPOSED**

8-5/8" 20.0# ST & C CSG  
SET @ 335'  
CIRC. CMT TO SURFACE

8-5/8" 20.0# ST & C CSG  
SET @ 335'  
CIRC. CMT TO SURFACE



**Pertinent Data Sheet - Jicarilla 94 #3A**

**Location:** 990' FNL, 1652' FWL. Unit C. Section 22, T-27-N, R-03-W Rio Arriba Co., NM

**Field:** Blanco Mesaverde  
Gavilan Pictured Cliffs

**Elevation:** 7057' GL

**TD:** 6350'  
**PBTD:** 6322'

**Spud Date:** 09/28/77  
**Completed:** 12/14/77

**DP#:** 29197A (MV)  
**Prop. #:** 071337000  
**GWI:** 100%  
**NRI:** 87.5%

**Casing Record:**

<u>Hole Size</u>	<u>Casing Size</u>	<u>Weight &amp; Grade</u>	<u>Depth Set</u>	<u>Cement</u>	<u>Top/Cement</u>
12-1/4"	8-5/8"	20.0# S.W. & C.	335'	210 sx	Surface
7-7/8"	4-1/2"	10.5# K-55	6350'	1470 sx*	Calc./TS

\* Two stages, DV set @ 4173', Stg 1 calculated TOC @ 4490' (100% WO)  
Stg 2 TOC @ 560' (TS)

**Tubing Record:**

<u>Tubing Size</u>	<u>Weight &amp; Grade</u>	<u>Depth Set</u>
2-3/8"	4.70# K-55	5956' (190 jts)

**Formation Tops:**

Ojo Alamo	3387'
Pictured Cliffs (Upper)	3685'
Pictured Cliffs (Main)	3822'
Lewis	4045'
Cliffhouse	5634'
Menefee	5685'
Point Lookout	5972'
Mancos	6159'

**Logging Record:** IEL - SP, CDL, CN, GR and Collar.

**Stimulation:** Perfed MesaVerde: 5674'-6156'  
Frac'd MesaVerde: 2 stages; 5,000 gals 15% NEA, 287,500 gallons Versagel,  
1,028,000# 20/40 sand.

**Workover History:** N/A.