

UNITED STATES
DEPARTMENT OF THE INTERIOR
GEOLOGICAL SURVEY30-039-21482
5. LEASE DESIGNATION AND SERIAL NO.

APPLICATION FOR PERMIT TO DRILL, DEEPEN, OR PLUG BACK

1a. TYPE OF WORK

DRILL ☒DEEPEN ☐PLUG BACK ☐

b. TYPE OF WELL

OIL
WELL ☐GAS
WELL ☒OTHER ☐SINGLE
ZONE ☒MULTIPLE
ZONE ☐

2. NAME OF OPERATOR

Mobil Oil Corporation

3. ADDRESS OF OPERATOR

3 Greenway Plaza East, Suite 800, Houston, Texas 77046

4. LOCATION OF WELL (Report location clearly and in accordance with any State requirements.)*

At surface

1190' FSL & 1090' FEL Sec. 23, T27N, R3W

At proposed prod. zone

Same as surface

14. DISTANCE IN MILES AND DIRECTION FROM NEAREST TOWN OR POST OFFICE*

13. DISTANCE FROM PROPOSED*

LOCATION TO NEAREST
PROPERTY OR LEASE LINE, FT.
(Also to nearest drg. unit line, if any)

1190'

16. NO. OF ACRES IN LEASE

2560

17. NO. OF ACRES ASSIGNED
TO THIS WELL

320 (2 wells)

18. DISTANCE FROM PROPOSED LOCATION*
TO NEAREST WELL, DRILLING, COMPLETED,
OR APPLIED FOR, ON THIS LEASE, FT.

2089'

19. PROPOSED DEPTH

6350'

20. ROTARY OR CABLE TOOLS

Rotary

21. ELEVATIONS (Show whether DF, RT, GR, etc.)

7148' Ground

22. APPROX. DATE WORK WILL START*

As soon as possible

23.

PROPOSED CASING AND CEMENTING PROGRAM

SIZE OF HOLE	SIZE OF CASING	WEIGHT PER FOOT	SETTING DEPTH	QUANTITY OF CEMENT
12 1/4"	8 5/8"	20# - Misco	0 - 300'	(1) Circulate to surface
7 7/8"	4 1/2"	9.5# - K-55	0 - 6350'	(2) Circulate to surface

CEMENTING PROGRAM

- (1) Class C cement with 2% CaCl₂
- (2) Cement in 2 stages using lite weight filler cement in the upper stage.
In the lower stage a lite weight cement will be used tailed in with
250 SX neat.

MUD PROGRAM

DEPTH	TYPE OF MUD	WEIGHT	VISCOSITY	WATER LOSS
0' - 300'	SPUD	8.8		
300' - 6350'	Fresh Water Gel	8.8 - 9.1	30 - 50	10 c.c.

BLOWOUT PREVENTER PROGRAM ATTACHED

Gas is dedicated

IN ABOVE SPACE DESCRIBE PROPOSED PROGRAM: If proposal is to deepen or plug back, give data on present productive zone and proposed new productive zone. If proposal is to drill or deepen directionally, give pertinent data on subsurface locations and measured and true vertical depths. Give blowout preventer program, if any.

24.

SIGNED

A. D. Bond

A. D. Bond

TITLE

Regulatory Engineering Coordinator

July 25, 1977

(This space for Federal or State office use)

PERMIT NO.

APPROVAL DATE

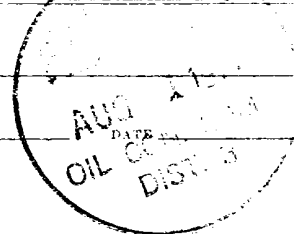
APPROVED BY

TITLE

CONDITIONS OF APPROVAL, IF ANY:

Okal

*See Instructions On Reverse Side



NEW MEXICO OIL CONSERVATION COMMISSION
WELL LOCATION AND ACREAGE DEDICATION PLAT

Form C-102
Superseded C-128
Effective 1-1-55

All distances must be from the outer boundaries of the Section.

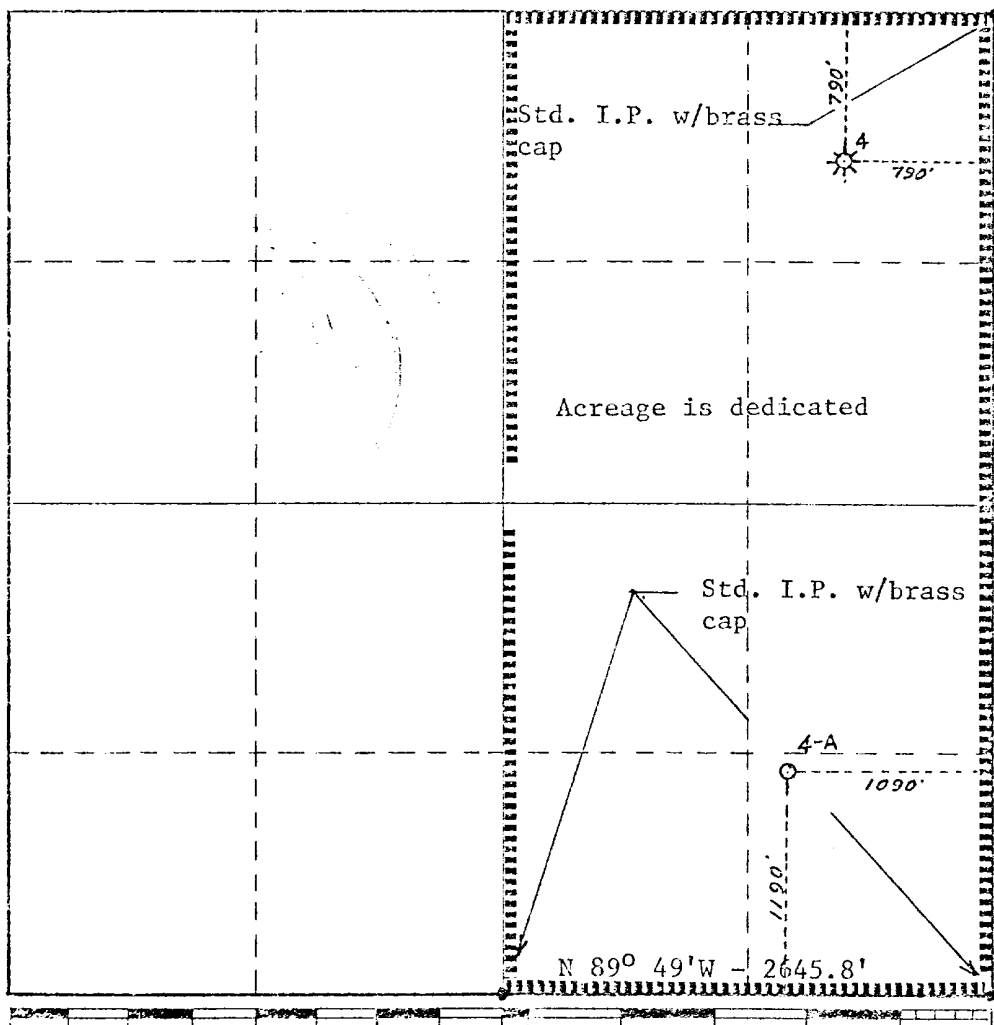
Lessee Mobil Oil Corporation		Lease Jicarilla "F"		Well No. 4 - A
Section P	Section 23	Township 27N	Range 3W	County Rio Arriba
Actual Easting Location of Well:				
1190	feet from the South	line and	1090	feet from the East
Drilling Level above 7148'	Producing Formation Mesaverde	Pool Blanco Mesaverde	Deeded Acres 320 (2 wells)	

1. Outline the acreage dedicated to the subject well by colored pencil or hatchure marks on the plat below.
2. If more than one lease is dedicated to the well, outline each and identify the ownership thereof (both as to working interest and royalty).
3. If more than one lease of different ownership is dedicated to the well, have the interests of all owners been consolidated by communitization, unitization, force-pooling, etc?

☐ Yes ☐ No If answer is "yes," type of consolidation _____

If answer is "no," list the owners and tract descriptions which have actually been consolidated. (Use reverse side of this form if necessary.) _____

No allowable will be assigned to the well until all interests have been consolidated (by communitization, unitization, forced-pooling, or otherwise) or until a non-standard unit, eliminating such interests, has been approved by the Commission.



CERTIFICATION

I hereby certify that the information contained herein is true and complete to the best of my knowledge and belief.

A. D. Bond

Name

A. D. Bond

Position

Regulatory Engr. Coord.

Company

Mobil Oil Corp.

Date

July 25, 1977

I hereby certify that the well location shown on this plat was plotted from field notes or actual measurements made by me or under my supervision, and that the same is true and correct to the best of my knowledge and belief.

H. A. Carson, Jr.

Date Surveyed

June 25, 1977

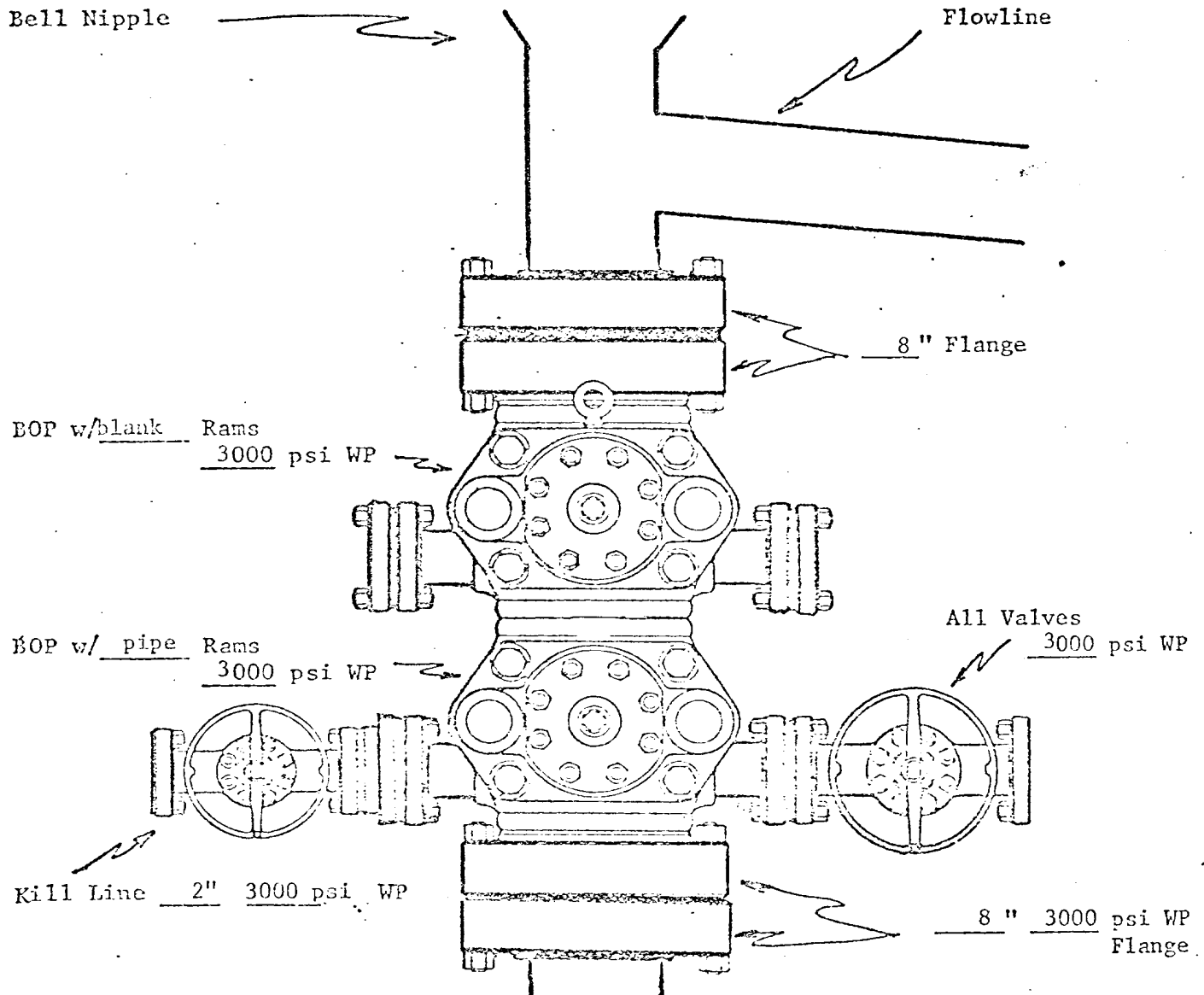
Registered Professional Engineer and/or Land Surveyor

H. A. Carson, Jr.

Certificate No.

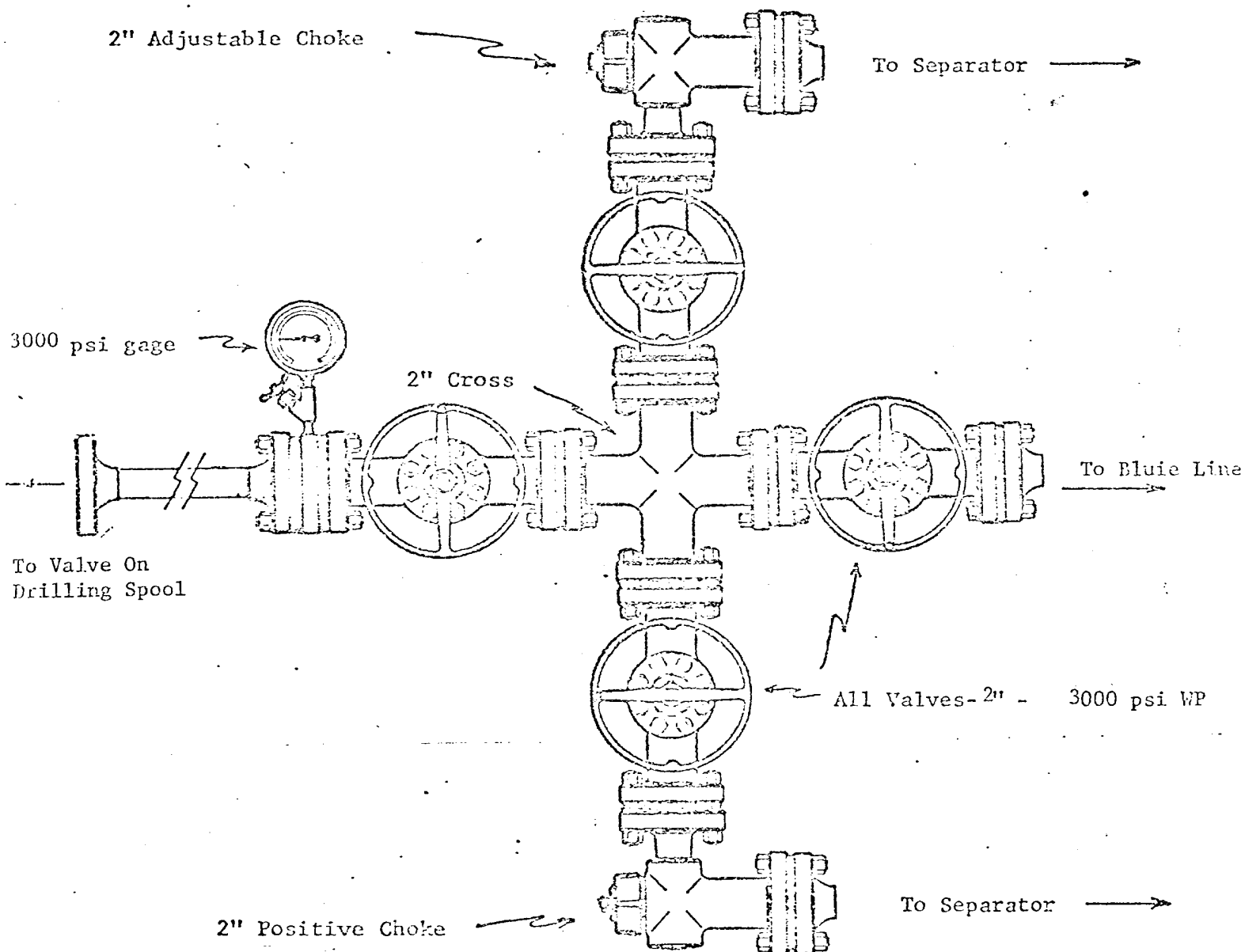
5063

PROPOSED BOP STACK
8 5/8 " CASING



MOBIL OIL CORPORATION
 WELL Jicarilla "F", Well #4A
Rio Arriba COUNTY,
New Mexico

PROPOSED CHOKE MANIFOLD
(MINIMUM REQUIREMENTS)
8 5/8 " CASING STRING



MOBIL OIL CORP.
WELL NAME & NO. Jicarilla "F"
Well #4A
Rio Arriba COUNTY, New Mex

MOBIL OIL CORPORATION

SURFACE USE PLAN
JICARILLA "F" WELL 4A
1190' FSL 1090' FEL
SECTION 23 T-27N R-3W

NEW MEXICO PRINCIPLE MERIDIAN

RIO ARriba COUNTY, NEW MEXICO

1. EXISTING ROADS (See attached vicinity map)

An existing graded road will be utilized to reach the location. This road leaves State Highway No. 537 at a point about 31 miles south of Dulce, New Mexico and goes about 0.7 mile to the location access road.

2. PLANNED ACCESS ROADS (See attached vicinity map)

The proposed access road will be 12 feet wide and 800 feet long, and will be constructed along an existing trail road.

3. LOCATION OF EXISTING WELLS

For location of existing wells see attached vicinity map.

4. LOCATION OF PRODUCTION FACILITIES

All production facilities will be located on the well pad.

5. WATER SUPPLY

Water will be trucked to the site for drilling purposes and will come from existing water supply wells as follows:

1. Water supply Well No. H-1 in the NE/4 of SW/4 of Section 2, T-26N, R-3W.
2. Water supply Well No. C-1 in the NE/4 of NE/4 of Section 8, T-26N, R-3W.
3. Water Supply Well No. 3 in the SE/4 of SE/4 of Section 4, T-26N, R-3W.

Existing roads will be used for hauling water from the supply wells to the proposed wells.

6. SOURCE OF CONSTRUCTION MATERIALS

No construction materials will be used.

7. METHODS OF HANDLING WASTE DISPOSAL

All garbage and trash will be burned, buried and or hauled from well site.

8. ANCILLARY FACILITIES

No ancillary facilities are planned at this time.

9. WELL SITE LAYOUT

See attached Plat "B"

10. PLANS FOR RESTORATION OF SURFACE

Pits will be backfilled and levelled to original grade and left for return of natural vegetation. The pad will be left in place for well servicing.

11. OTHER INFORMATION

The location site is located on the east slope of a northeast-southwest ridge, site has a general slope of 5%. Drainage in area is from south to northeast. The well site falls approximately 160 feet from earth dam and tank. The drilling pad will be located so that the pits will be down stream from the dam, and a diversion ditch will be constructed between well and pond. The location falls in sage brush, oak brush, sparse grass, scattered pinon and one pine tree. The surface is owned by the Jicarilla Apache Tribe and is utilized for grazing sheep, goats and cattle.

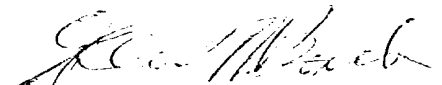
12. LESSEE'S OR OPERATORS REPRESENTATIVE

Glen W. Barb
Mobil Oil Corporation
P. O. Box 633
Midland, TX 79702

Telephone 915-684-8211

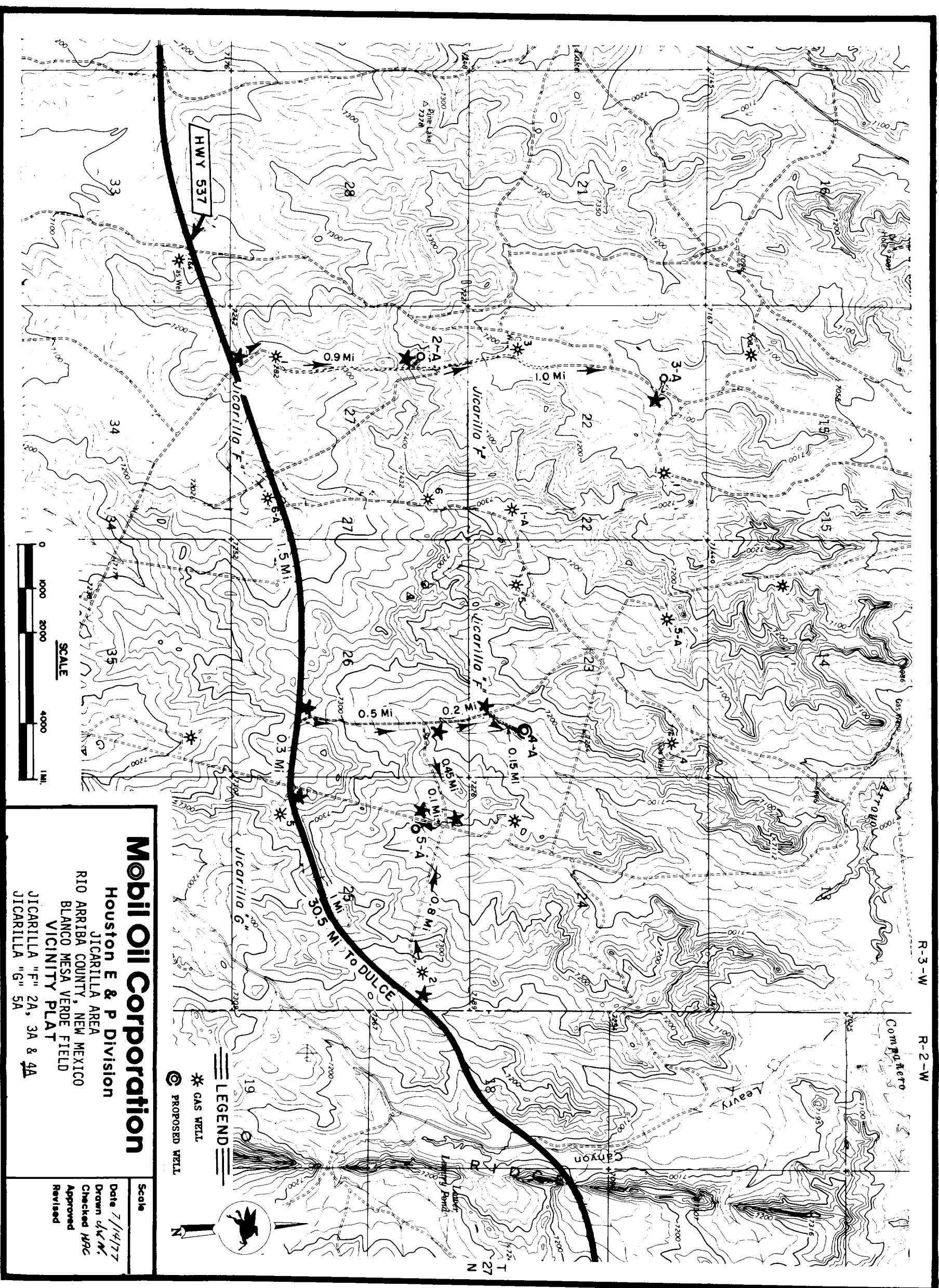
13. CERTIFICATION

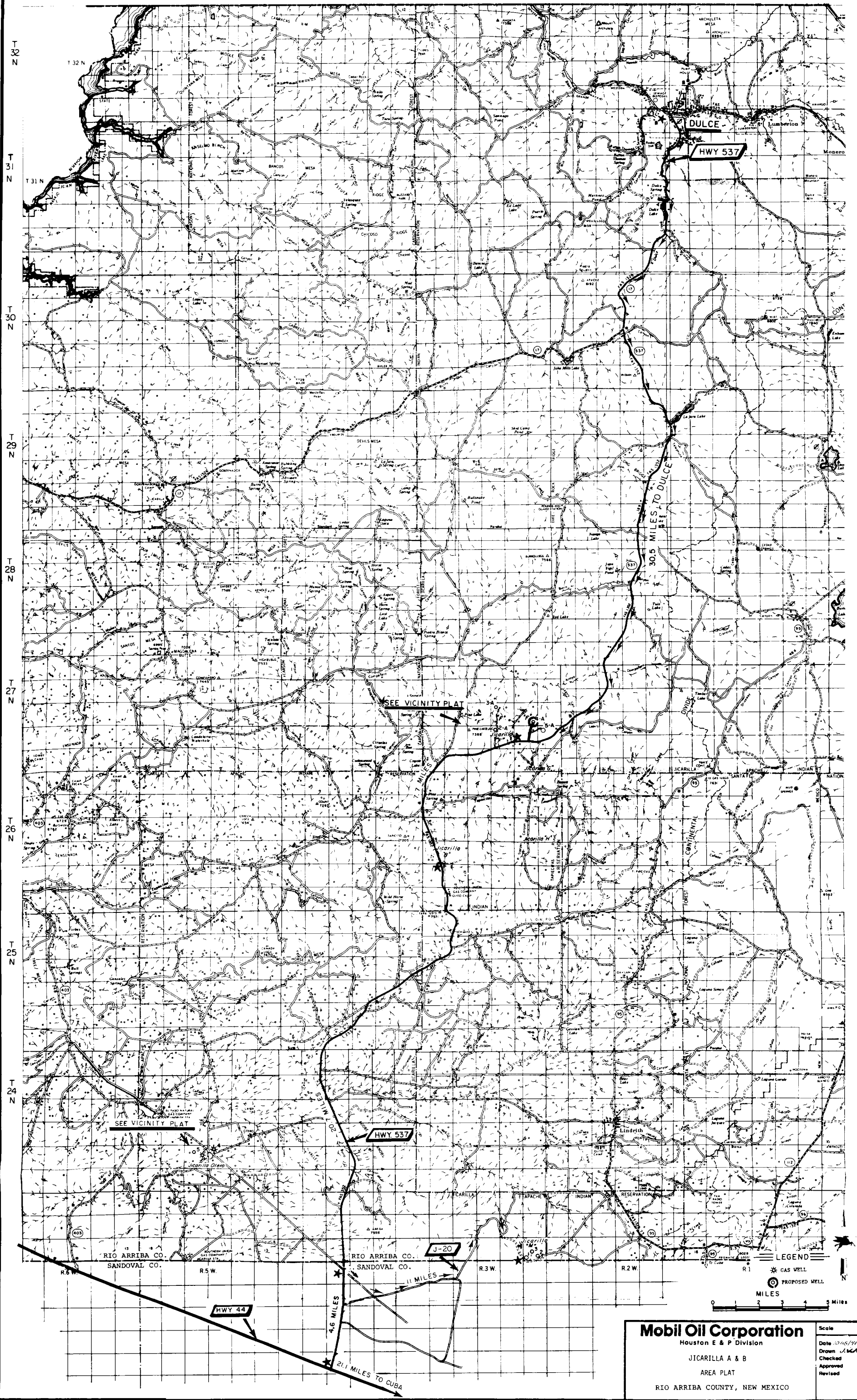
I hereby certify that I, or persons under my direct supervision, have inspected the proposed drillsite and access route; that the statements made in this plan are, to the best of my knowledge, true and correct; and that the work associated with the operations proposed herein will be performed by a reliable contractor in conformity with this plan and the terms and conditions under which it is approved.



Glen W. Barb
Operations Superintendent

HACarsonjr/tb





Mobil Oil Corporation
Houston E & P Division

JICARILLA A & B
AREA PLAT
RIO ARRIBA COUNTY, NEW MEXICO

Scale

Date 10/15/76

Drawn JMK

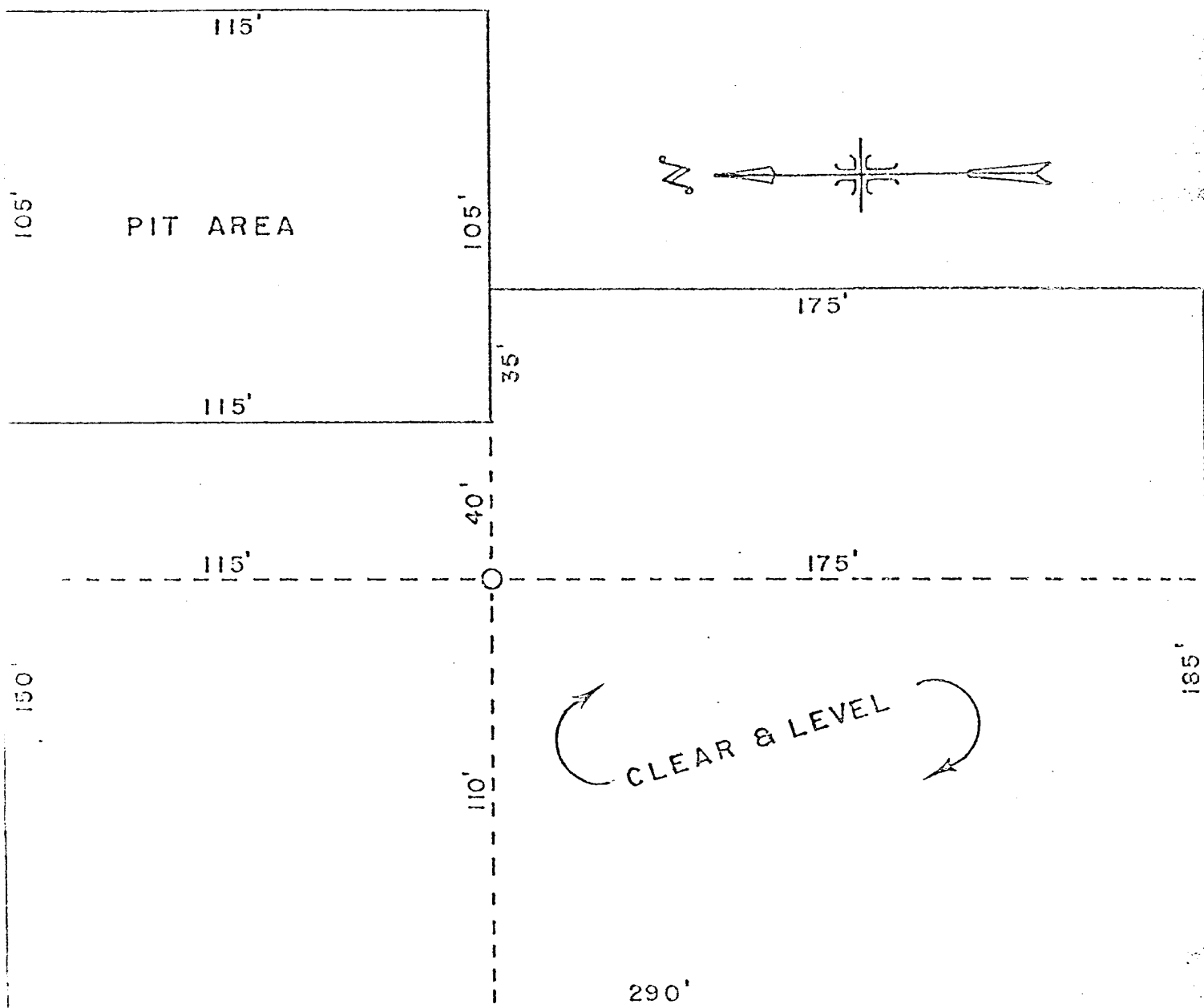
Checked

Approved

Revised

IS THE PROPERTY OF MOBIL OIL CORPORATION AND
SHALL NOT BE COPIED OR USED EXCEPT FOR THE

THE DRAWING AND ANY COPIES THEREON (PARTIAL
OR COMPLETE) SHALL BE RETURNED TO THE OWNER
ON DEMAND.



JICARILLA "F" 4 A
1190' FSL 1090' FEL
SEC 23 T-27-N R-3-W
RIO ARriba COUNTY, NEW MEXICO

NO.			DATE			BY		
JICARILLA MESA VERDE STANDARD LOCATION PLAN								
Mobil Oil Corporation Houston E & P Division								
DRAWN JAW						DWG. NO.		

MOBIL OIL CORPORATION'S
JICARILLA "F" LEASE, WELL #4A
BLANCO MESAVERDE POOL
RIO ARriba COUNTY, NEW MEXICO

Ten Point Well Control & Resources Protection Data

1. Geological name of surface formation: San Jose
2. Estimated tops of important geological formations:

Ojo Alamo - 2600'
Pictured Cliffs - 3620'
Lewis Shale - 4100'
Mesaverde - 5700'
3. Estimated depths at which water, oil, gas and other mineral are expected to be encountered:

Ojo Alamo - 1720' - Water
Pictured Cliffs - 3620' - Oil & Gas
Mesaverde - 5700' - Oil & Gas

4. New pipe will be used to drill this well as outlined in the drilling application.
5. Diagrammatic sketches of the blowout preventer system planned for this well are attached to the Form 9-331C.
6. The mud program, giving the type and characteristics of the drilling mud proposed is attached to the Form 9-331C. A sufficient quantity of mud and chemicals will be maintained at the well site to meet anticipated normal conditions, recognizing the time required to replenish supplies from local sources.
7. The auxiliary equipment to be used will include: (1) Kelly cock; and (2) a sub with a full opening valve. We do not believe there will be need for a float at the bit on this unit.
8. Logging, coring & testing program:

<u>Log</u>	<u>Depth</u>
GR-LL-Acoustic	Surface casing to total depth
GR-Neutron-Collar	Surface casing to total depth

No coring will be done and only the Mesaverde will be tested.

9. No abnormal pressures, temperatures or hazardous gases are expected to be encountered; however, prudent drilling operations will be maintained to guard against such possibilities.
10. It is anticipated that all necessary approvals will be obtained in order that drilling operations can commence by August 15, 1977. The duration of operations should not exceed 20 days.