

submitted in lieu of Form 3160-5

UNITED STATES
DEPARTMENT OF THE INTERIOR
BUREAU OF LAND MANAGEMENT

Sundry Notices and Reports on Wells

1. Type of Well
GAS

2. Name of Operator
MERIDIAN OIL

3. Address & Phone No. of Operator
PO Box 4289, Farmington, NM 87499 (505) 326-9700

4. Location of Well, Footage, Sec., T, R, M
1190' FNL, 1190' FWL Sec. 25, T-27-N, R-3-W, NMPM

5. Lease Number
Jic Cont 95
6. If Indian, All. or
Tribe Name
Jicarilla Apache
7. Unit Agreement Name

8. Well Name & Number
Jicarilla 95 #5A
9. API Well No.

10. Field and Pool
Gavilan PC/
Blanco MV
11. County and State
Rio Arriba Co, NM

12. CHECK APPROPRIATE BOX TO INDICATE NATURE OF NOTICE, REPORT, OTHER DATA

Type of Submission

☒ Notice of Intent
☐ Subsequent Report
☐ Final Abandonment

Type of Action

☐ Abandonment
☐ Recompletion
☐ Plugging Back
☐ Casing Repair
☐ Altering Casing
☒ Other - pay add
☐ Change of Plans
☐ New Construction
☐ Non-Routine Fracturing
☐ Water Shut off
☐ Conversion to Injectio

13. Describe Proposed or Completed Operations

The Pictured Cliffs will be perforated and stimulated in the following manner: TOOH w/tbg. Set RBP above existing M perfs. Run CBL to verify TOC. If good top is not seen at least 50' above proposed top PC perf, remedial cmt work will be performed. The PC will be perf'd 3702-3866' and stimulate w/approx 1500 gal acid and fracture stimulated. Run after frac GR log to verify if frac stayed in zone. TIH w/2 3/8" tbg landed @ 6150 Application is being made to NMOCD for commingling. Attached is a procedure and wellbore diagram.

RECEIVED

MAR 02 1994

OIL CON. DIV.
DIST. 3

14. I hereby certify that the foregoing is true and correct.

Signed [Signature] (BA) Title Regulatory Affairs Date 1/6/94

(This space for Federal or State Office use)

APPROVED BY [Signature] Title Assistant Manager
CONDITION OF APPROVAL, if any:

Date 2/16/94

NEW-MEXICO OIL CONSERVATION COMMISSION
WELL LOCATION AND ACREAGE DEDICATION PLAT

Form C-101
Supersedes C-128
Effective 1-1-61

All distances must be from the outer boundaries of the Section.

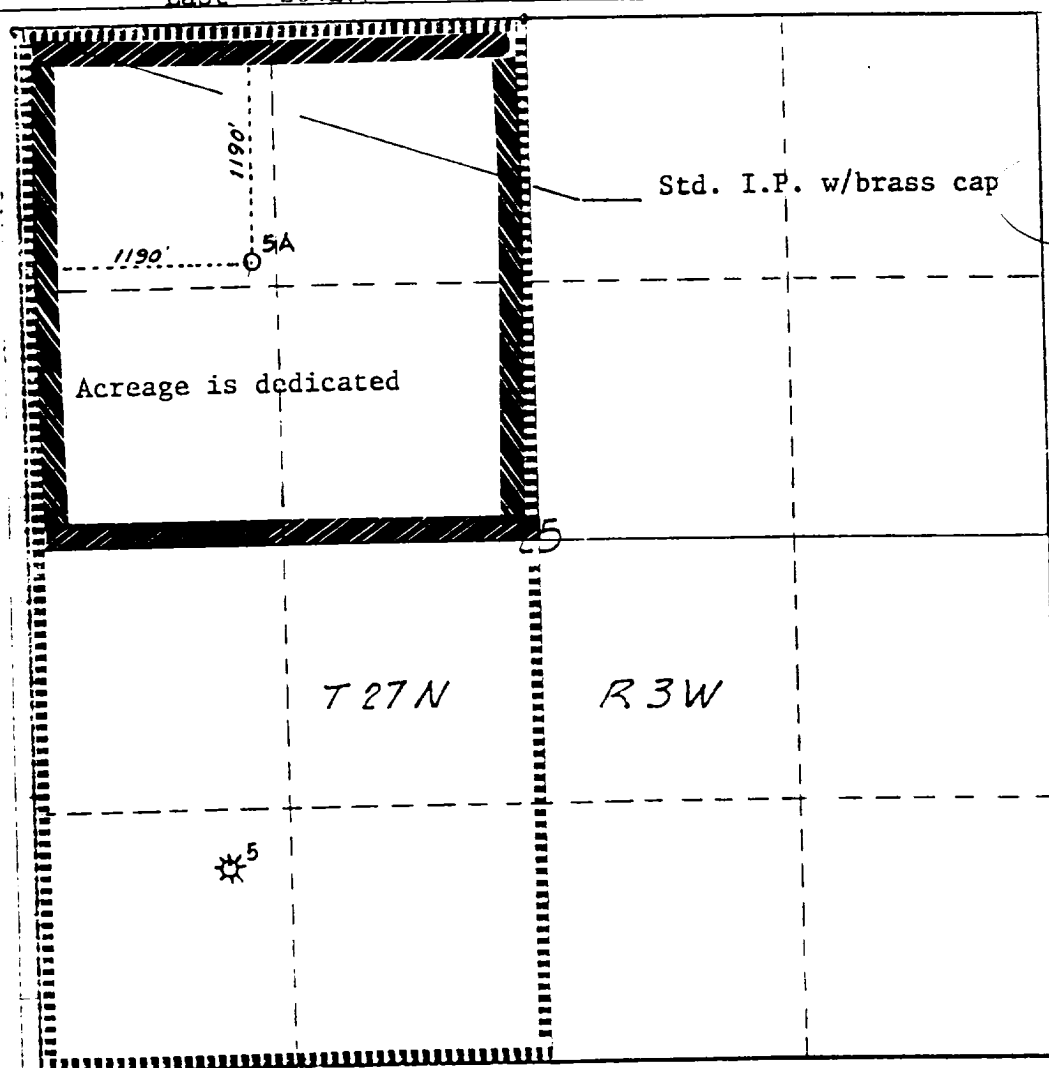
Operator Meridian Oil Inc.		Lease Jicarilla 95		Well No. 5 - A	
Unit Letter D	Section 25	Township 27N	Range 3W	County Rio Arriba	
Actual Surface Location of Well:					
1190 feet from the North line and		1190 feet from the West line			
Ground Level Elev. 7184'	Producing Formation Mesaverde /Pic.Cliffs		Pool Blanco /Gavilan		Dedicated Acreage: 320/160 Acres

- Outline the acreage dedicated to the subject well by colored pencil or hachure marks on the plat below.
- If more than one lease is dedicated to the well, outline each and identify the ownership thereof (both as to working interest and royalty).
- If more than one lease of different ownership is dedicated to the well, have the interests of all owners been consolidated by communitization, unitization, force-pooling, etc?

☐ Yes ☐ No If answer is "yes," type of consolidation _____

If answer is "no," list the owners and tract descriptions which have actually been consolidated. (Use reverse side of this form if necessary.) _____

No allowable will be assigned to the well until all interests have been consolidated (by communitization, unitization, forced-pooling, or otherwise) or until a non-standard unit, eliminating such interests, has been approved by the Commission. **East - 2641.7'**



CERTIFICATION

I hereby certify that the information contained herein is true and complete to the best of my knowledge and belief.

Peggy Bradfield
Name
Peggy Bradfield

Position
Regulatory Representative

Company
Meridian Oil Inc.

Date
1-6-94

I hereby certify that the well location shown on this plat was plotted from field notes of actual surveys made by me or under my supervision, and that the same is true and correct to the best of my knowledge and belief.

Date Surveyed

June 26, 1977

Registered Professional Engineer
and/or Land Surveyor

H. A. Carson, Jr.

Certificate No.

JICARILLA 95 #5A
Unit D, Section 25, T27N, R03W
Recommended Recompletion Procedure
Pictured Cliffs Pay Add & Completion

Note: Notify BLM (761-8762) and NMOCD (334-6178) 24 hours prior to rig activity.

Inspect location and install and/or test rig anchors. Install 1 - 400 bbl rig tank and fill w/ 2% KCl water. Approximately 201 jts. 2-3/8" 4.7# J-55 tubing will be required (MOI, District Tools) for cleanout and production. Comply with all BLM, NMOCD, Jicarilla Apache, and MOI rules and regulations. Notify engineering when work has commenced. Hold Safety Meetings on a regular basis.

1. Install 1 X 400 bbl frac tanks and fill with 2% KCl water.
2. Hold Safety Meeting. MIRU. Place fire and safety equipment in easily accessible locations. NU relief line and blooie line to laydown flow tank. Obtain and record all wellhead pressures.
3. Blow down tubing. If tubing will not blow down, kill well with KCl water. PBTD is 6227'.
4. TOOH with 5953' of 2-3/8" 4.70# tubing, visually inspect and tally tubing.
5. RU wireline. RIH with 4-1/2" 10.5# gauge ring and check pipe. PU Baker Model G Retrievable bridge plug, TIH and set bridge plug at 4000'. Run GR - CBL - CCL in 4-1/2 casing from bridge plug to Surface pipe (Did not circ. stg1, Circ. cmt., stg 2). TOC must be above 3650' to continue. Evaluate GR - CBL - CCL and send copy to production engineering.
6. TIH w/ treesaver. Pressure test treesaver and casing to 3200 psi. for 15 min. If pressure test fails, prepare to test and repair casing. Contact Production Engineering and a casing repair will be submitted. TOOH with treesaver.

Pictured Cliffs Stimulation:

7. Select-Fire Perf. the following intervals w/ 3-1/8" HSC -3125-306, 12 gram Owen charges 0.31" holes w/ 12.02 " penetration:

3702' - 3866'. (22 Holes)

8. RD wireline. TIH w/ treesaver.
9. RU stimulation company. **Hold Safety Meeting.** Pressure test surface treating lines to 5000 psi. **Maximum STP during acid job is 3200 psi.** Pump 1,500 gals 15% HCl w/additives at a rate of 4-6 BPM, attempt to ball-out the perforations. Drop a total of 33 7/8" RCN ball sealers (1.3sp.gr.) spaced evenly throughout the job. Record rates and pressures while attempting to achieve ball-out.
10. RD stimulation company. TOOH w/ treesaver. RU wireline, run junk basket to knock-off/retrieve as many ballsealers as possible. TIH w/ treesaver. RU stimulation company. Prepare to fracture stimulate the Pictured Cliffs.
11. Pressure test surface treating lines to 5000 psi. **Maximum treating pressure is 3200 psi.** Fracture and tag the PC according to the attached procedure. Flow-back the well immediately using a variable choke manifold. Increase choke size as needed to keep the well from logging off, if possible. When pressures and flow rates allow, TOOH w/ treesaver.

**Jicarilla 95 #5A
Pictured Cliffs Pay-Add**

12. TIH w/ retrieving head and 2-3/8" 4.70# workstring and clean out to the retrievable bridge plug @ 4000' with air until sand production is minimal. Obtain pitot gauge for the Pictured Cliffs formation. Record pitot gauge as the Pictured Cliffs formation only. Latch onto the retrievable bridge plug and TOOH.
13. RU wireline, run After-frac Tracer Survey-GammaRay (report if frac stayed in zone, if possible), POOH. RD wireline. Send copy of logs to Production Engineering.
14. TIH w/ one joint 2-3/8" 4.7# J-55 tubing, seating nipple, and 2-3/8" production tubing. Cleanout to 6227' with air. Land tubing @ +/-6150' (77' of rathole) and obtain final pitot gauge. ND BOP, NU WH. Contact Production Operations for well tie-in. RD and MOL.

Approved: _____
Drilling Superintendent

Suggested Vendors:

Wireline:	Petro Wireline	326-6669
Radioactive Tag:	ProTechnics, Intl	326-7133
Tubing:	MOI, District Tools	326-9826
Stimulation:	WCNA	327-6222
Treesaver:	WIT	599-5609
Production Oper.:	Bruce Voiles	326-9571
Engineering:	Brian Ault	326-9871 w 326-6613 h

Jicarilla 95 #5A

Unit D, Sec. 25, T27N, R3W

Pictured Cliffs Pay Add and Stimulation

