

UNITED STATES
DEPARTMENT OF THE INTERIOR
GEOLOGICAL SURVEY

APPLICATION FOR PERMIT TO DRILL, DEEPEN, OR PLUG BACK

1a. TYPE OF WORK

DRILL ☒DEEPEN ☐PLUG BACK ☐

b. TYPE OF WELL

OIL
WELL ☐GAS
WELL ☒

OTHER

SINGLE
ZONE ☒MULTIPLE
ZONE ☐

2. NAME OF OPERATOR

Consolidated Oil & Gas, Inc.

3. ADDRESS OF OPERATOR

1860 Lincoln Street, Denver, Colorado 80295

4. LOCATION OF WELL (Report location clearly and in accordance with any State requirements.*)

At surface

F 1790' FNL & 1660' FWL

At proposed prod. zone

Same

14. DISTANCE IN MILES AND DIRECTION FROM NEAREST TOWN OR POST OFFICE*

30 miles northwest of Lindrith

15. DISTANCE FROM PROPOSED*

LOCATION TO NEAREST
PROPERTY OR LEASE LINE, FT.
(Also to nearest drlg. unit line, if any)

1660'

16. NO. OF ACRES IN LEASE

1280'

17. NO. OF ACRES ASSIGNED
TO THIS WELL

320

18. DISTANCE FROM PROPOSED LOCATION*

TO NEAREST WELL, DRILLING, COMPLETED,
OR APPLIED FOR, ON THIS LEASE, FT.

140'

19. PROPOSED DEPTH

6310'

20. ROTARY OR CABLE TOOLS

Rotary

21. ELEVATIONS (Show whether DF, RT, GR, etc.)

7057' Gr.

22. APPROX. DATE WORK WILL START*

January 1, 1978

23.

PROPOSED CASING AND CEMENTING PROGRAM

| SIZE OF HOLE | SIZE OF CASING | WEIGHT PER FOOT | SETTING DEPTH | QUANTITY OF CEMENT |
|--------------|----------------|-----------------|---------------|-------------------------|
| 15" | 10-3/4" | 40.5# | 300 | Circ. (approx. 250 sx.) |
| 8-3/4" | 7" | 23# | 4185' | Circ. (approx. 170 sx.) |
| 6-1/4" | 4-1/2" | 10.5# | 6310' | Approx. 250 sx. |

1. Drill 15" hole to \pm 300'. Set 10-3/4" casing. Circulate cement to surface.
2. WOC 12 hrs.
3. Install blowout preventers. Pressure test surface casing and blowout preventer to 600 psi.
4. Drill 8-3/4" hole to approximately 300' below top of Pictured Cliff or to approximately 4185' with fresh water gel mud. Log. Run 7" casing and cement with approximately 170 sx. WOC 12 hrs.
5. Air or gas drill 6-1/4" hole to 6310'. Log
6. Set 4-1/2" casing with approximately 250 sx.
7. Selectively perforate and stimulate the Mesaverde and complete as required by rules and regulations.

Gas is dedicated

IN ABOVE SPACE DESCRIBE PROPOSED PROGRAM: If proposal is to deepen or plug back, give data on present productive zone and proposed new productive zone. If proposal is to drill or deepen directionally, give pertinent data on subsurface locations and measured and true vertical depths. Give blowout preventer program, if any.

24.

SIGNED

O.B. Whitenburg
O.B. Whitenburg

TITLE

Sr. Drilg. Engr.

DATE

10/6/77

(This space for Federal or State office use)

PERMIT NO.

APPROVAL DATE

APPROVED BY

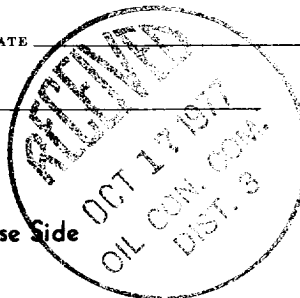
TITLE

DATE

CONDITIONS OF APPROVAL, IF ANY:

Okal

*See Instructions On Reverse Side



NEW MEXICO OIL CONSERVATION COMMISSION

WELL LOCATION AND ACERAGE DEDICATION PLAT

All distances must be from the outer boundaries of the Section

| | | | | | |
|--|---|-----------------------------------|---------------------------------------|-----------------------------|--------------------------|
| Operator CONSOLIDATED OIL AND GAS, INC. | | | Lease CHAMPLIN | | Well No. 3 - A |
| Unit Letter F | Section 35 | Township 27 NORTH | Range 4 WEST | County RIO ARRIBA | |
| Actual Footage Location of Well: <div style="display: flex; justify-content: space-between;"> 1790 feet from the NORTH line and 1660 feet from the WEST line </div> | | | | | |
| Ground Level Elev. 7057 | Producing Formation Mesaverde | Pool Blanco Mesaverde ✓ | Dedicated Acreage: 320 ✓ Acres | | |

1. Outline the acreage dedicated to the subject well by colored pencil or hatchure marks on the plat below.
2. If more than one lease is dedicated to the well, outline each and identify the ownership thereof (both as to working interest and royalty).
3. If more than one lease of different ownership is dedicated to the well, have the interests of all owners been consolidated by communitization, unitization, force-pooling, etc?


() Yes () No If answer is "yes," type of consolidation

If answer is "no," list the owners and tract descriptions which have actually consolidated. (Use reverse side of this form if necessary.)

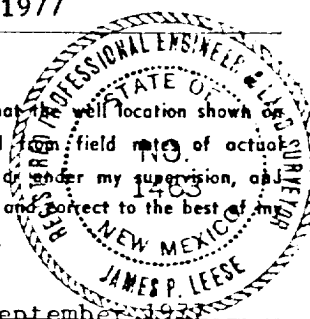
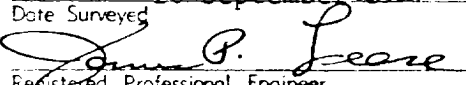
No allowable will be assigned to the well until all interests have been consolidated (by communitization, unitization, forced-pooling, or otherwise) or until a non standard unit, eliminating such interests, has been approved by the Commission.

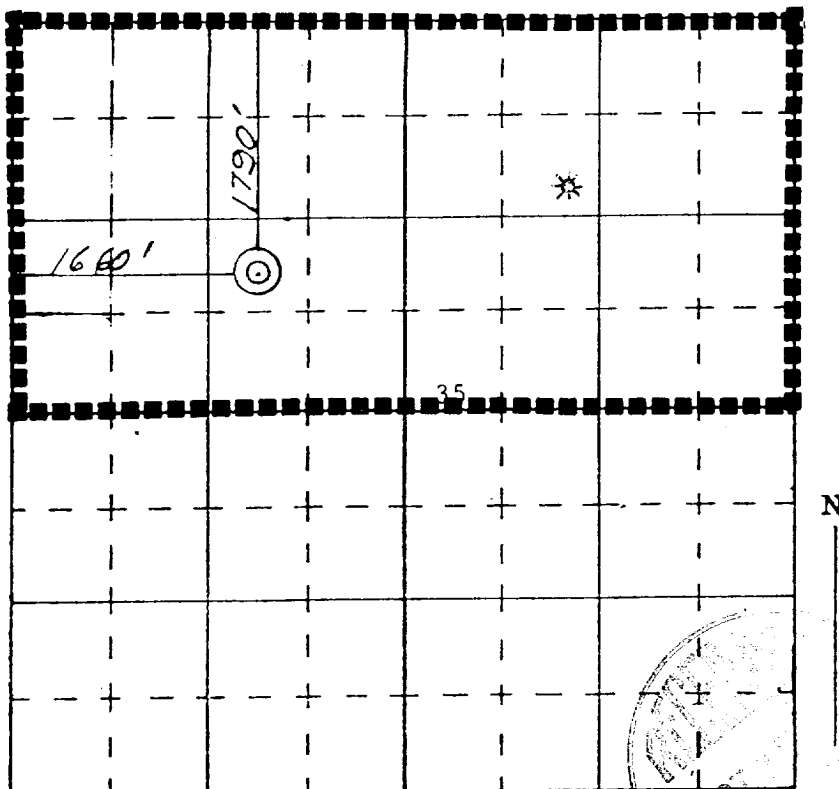
CERTIFICATION

I hereby certify that the information contained herein is true and complete to the best of my knowledge and belief.


 Name **O.B. Whitenburg**
 Position **Sr. Drilling Engineer**
 Company **Consolidated Oil & Gas, Inc.**
 Date **October 6, 1977**

I hereby certify that the well location shown on this plat was plotted from field notes of actual surveys made by me or under my supervision, and that the same is true and correct to the best of my knowledge and belief.


 Date Surveyed **26 September 1977**

 Registered Professional Engineer
 and/or Land Surveyor **James P. Leese**



SCALE—4 INCHES EQUALS 1 MILE

SAN JUAN ENGINEERING COMPANY, FARMINGTON, N. M.

Certificate No. **1463**

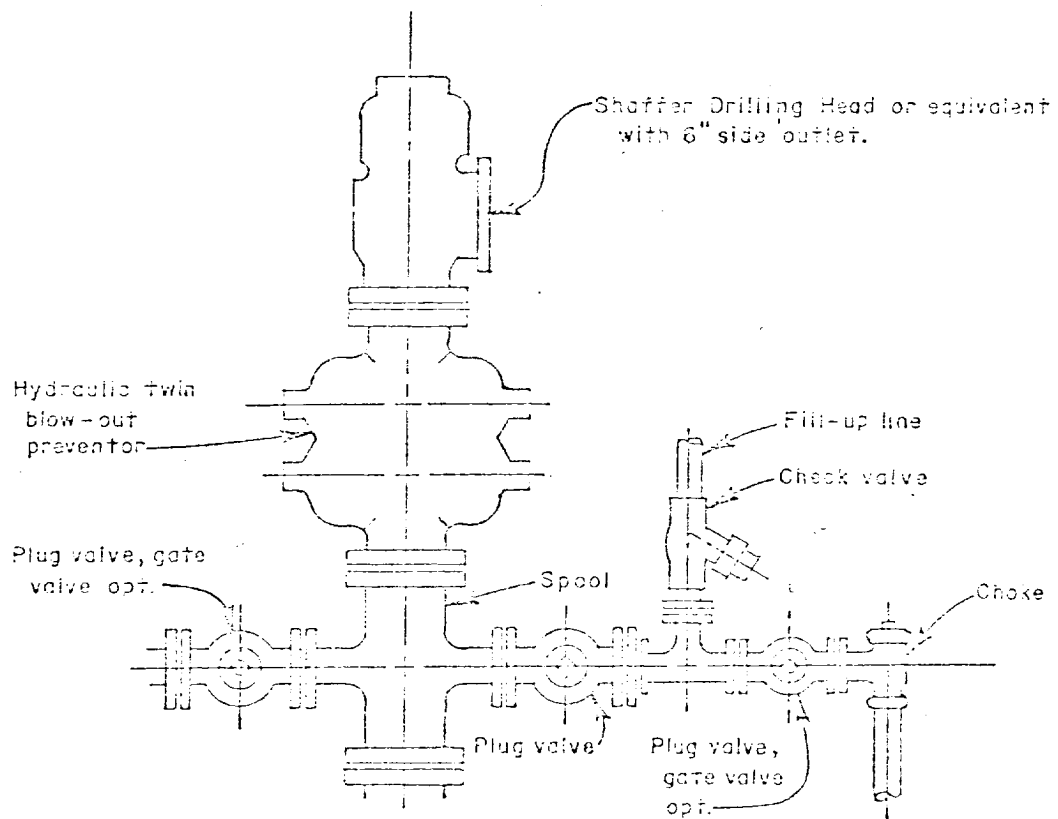


Diagram "A"



Champline #3A

Existing Road
Proposed pipeline

Cottonwood Spring

Gas Well

JICARILLA

APACHE

INDIAN

RESERVATION

BOUNDARY

Cottonwood

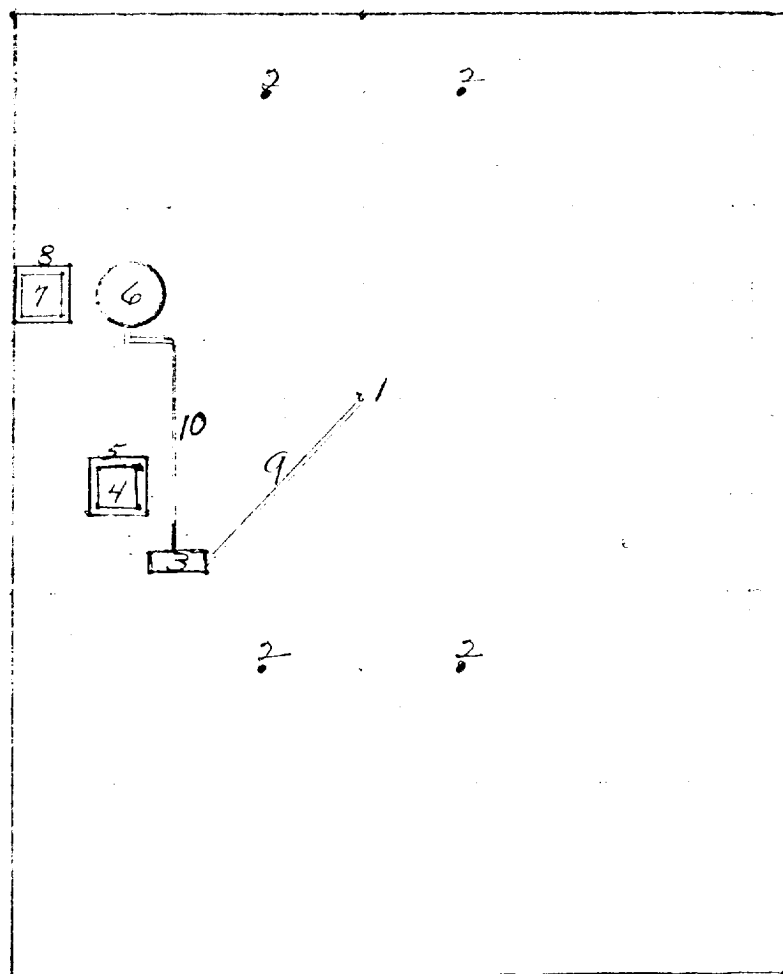
Cedar Canyon

Exhibit #1

VICINITY MAP
CONSOLIDATED OIL & GAS, INC.
Well locations on W/2 Sec 35,
T27N. R4W. N.M.P.M. Rio Arriba
County, New Mexico

Scale: 1"=2000' Date: 2/1/77
2 A

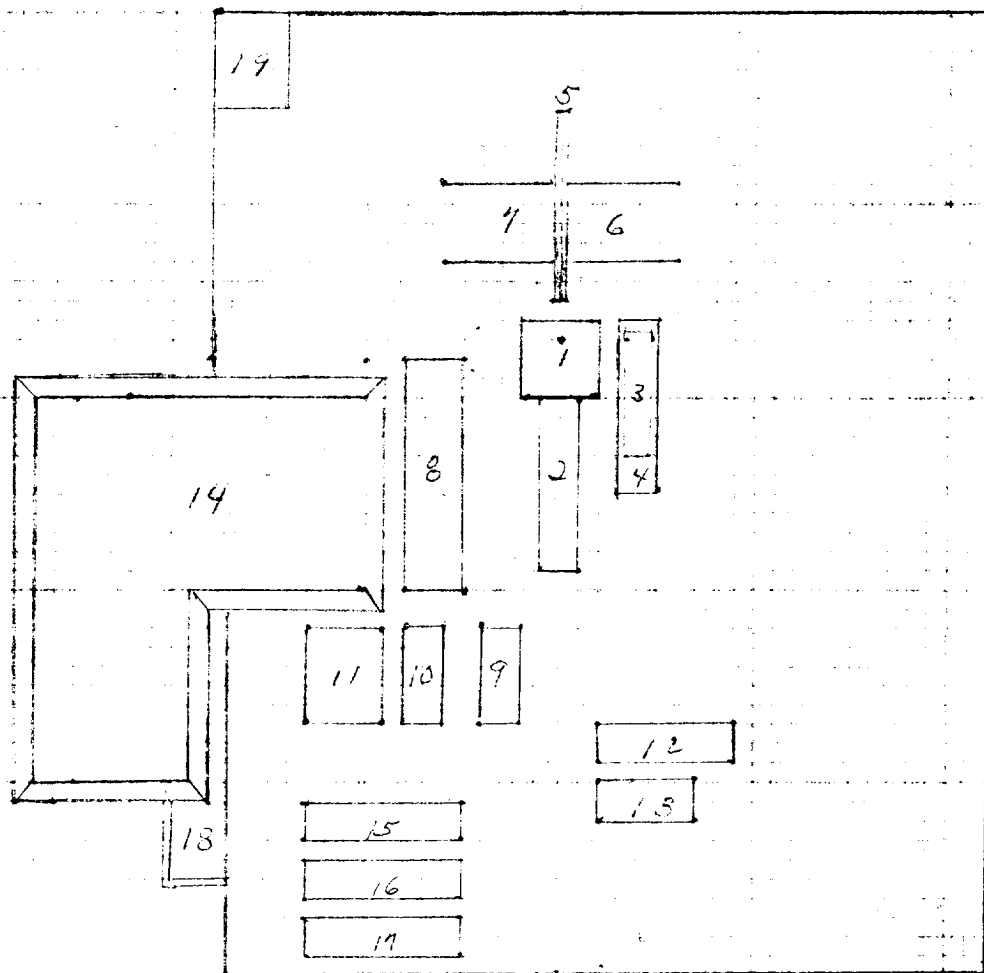
1. Well
2. Dead Men
3. Prod. Unit
4. Water Pit
5. Fence
6. 300 bbl. Oil Tank
7. Water Pit
8. Fence
9. 2" Buried flow line
10. 1½" Oil Line



1" equals 50'

Exhibit #II

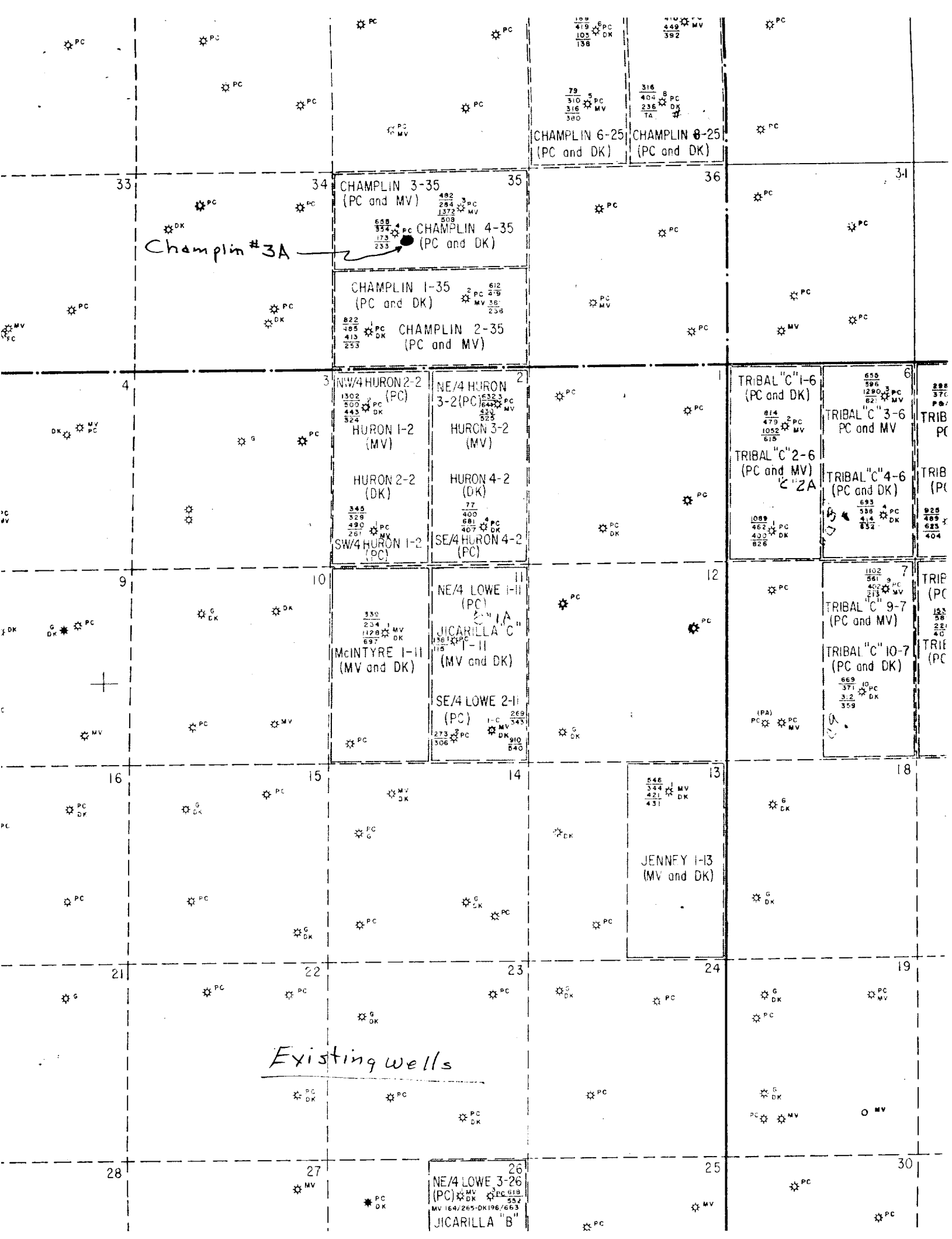
1. Sub.
2. Drive in unit
3. Doghouse
4. Water tank
5. Walk
6. Pipe racks
7. Pipe racks
8. Steel working pit
9. Pump
10. Pump
11. Mud storage
12. Light plant
13. Change house
14. Reserve pit
15. Air compressor
16. Air compressor
17. Air compressor
18. Burn Pit
19. Blow Pit



Location layout

50 FT.

1" equals 50'



OPERATIONS PLAN

U.S. Geological Survey

P.O. Box 1809

Durango, Colorado 81301

Re: Application for Permit to Drill

Champlin #3A

Rio Arriba County

New Mexico

Gentlemen:

Following is the information requested in NTL-6 to accompany the permit to drill.

1. Location:

1790' FNL & 1660' FWL

2. Elevation of Unprepared Ground:

7057' Gr.

3. Geologic Name of Surface Formation:

San Jose

4. Type Drilling Tools:

Rotary

5. Proposed Drilling Depth:

6310'

6. Estimated Tops of Geologic Markers:

| | | | |
|-----------------|-----------|-------------|-----------|
| Pictured Cliffs | - - 3885' | Menefee | - - 5702' |
| Lewis | - - 3965' | Pt. Lookout | - - 6056' |
| Cliff House | - - 5562 | Mancos | - - 6214' |

7. Estimated Depths at which Anticipated Gas or Oil Bearing Formations

Expected:

| | |
|-----------------|-----------|
| Pictured Cliffs | - - 3885' |
| Cliff House | - - 5562' |
| Pt. Lookout | - - 6056' |

8. Casing Program and Setting Depth:

| | <u>Size</u> | <u>Weight</u> | <u>Grade</u> | <u>Condition</u> | <u>Setting</u> | <u>Depth</u> |
|--------------|-------------|---------------|--------------|------------------|----------------|--------------|
| Surface | 10 3/4" | 40.5# | X-42 | New | 300' | |
| Intermediate | 7" | 23.0# | K-55 | New | 4185' | |
| Liner | 4-1/2" | 10.5 | K-55 | New | 250' | |

9. Casing Setting Depth and Cement:

a. 10-3/4" @ 300' w/300 sx.

b. 7" @ 4185' w/170 sx

c. 4-1/2" Liner (4085' to 6310') w/250 sx.

10. Pressure Control Equipment:

BOP & Rotating Head will be installed after surface casing has been run (See Diagram "A").

11. Circulating Media:

The surface & intermediate hole will be drilled with a fresh water Low Solids system.

The 6-1/4" hole from 4185' to 6310' will be drilled with air.

12. Testing, Logging and Coring Programs:

No testing or coring is anticipated.

Logs will be run thru the air drilled hole.

13. Abnormal Pressure or Temperature and Hydrogen Sulfide Gas:

None anticipated

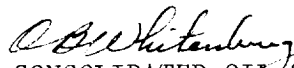
14. Anticipated Starting Date:

January 1, 1977

15. Other Facets of the Proposed Operations:

None

Yours very truly,


CONSOLIDATED OIL & GAS, INC.

Development Plan For Surface Use

Champlin #3A

Consolidated Oil & Gas, Inc. - Operator

SF 079527A

Sec. 35, T27N, R4W

Rio Arriba, New Mexico

1. Existing Roads

See enclosed topographic map (Exhibit I) which shows existing improved and unimproved roads.

2. Planned Access Roads

See enclosed topographic map.

3. Location of Existing Wells

See enclosed topographic map.

4. Location of Existing and/or Proposed Facilities

See enclosed topographic map showing location of wells and facilities operated by Consolidated Oil & Gas, Inc. If production is established, the tank battery and other required producing equipment will be located per attached completion plat: (Exhibit II)

5. Location and Type of Water Supply

Drilling water will be hauled by truck approx. 5 miles from water well in Tapacito Creek.

6. Source of Construction Materials

None

7. Methods of Handling Waste Disposal

All waste material will be contained by earthen and steel pits. The earthen pits will be subsequently backfilled and buried. A portable chemical toilet will be furnished for drilling personnel.

8. Ancillary Facilities

No separate campsites or air strips are proposed.

9. Wellsite Layout

The drillsite location will be graded and will be approximately 250 ' by 250 ' with natural drainage to the SE. Care will be taken while grading to control erosion.

10. Plans for Restoration of Surface

- A. Following drilling and completion operations all equipment and material not needed for operations will be removed. Pits containing fluid will be fenced until they dry out and will then be filled and the location cleaned of all trash and junk.
- B. After abandonment, any special rehabilitation and/or re-vegetation requirements (specified by regulatory agency) will be complied with and accomplished as expeditiously as possible.

