

UNITED STATES
DEPARTMENT OF THE INTERIOR
GEOLOGICAL SURVEY

APPLICATION FOR PERMIT TO DRILL, DEEPEN, OR PLUG BACK

1a. TYPE OF WORK

DRILL ☒DEEPEN ☐PLUG BACK ☐

b. TYPE OF WELL

OIL
WELL ☐GAS
WELL ☒OTHER ☐SINGLE
ZONE ☒MULTIPLE
ZONE ☐

2. NAME OF OPERATOR

Consolidated Oil & Gas, Inc.

3. ADDRESS OF OPERATOR

1860 Lincoln Street, Denver, Colo. 80295

4. LOCATION OF WELL (Report location clearly and in accordance with any State requirements.)*

At surface
1090 FSL & 1720' FWL

At proposed prod. zone

Same

14. DISTANCE IN MILES AND DIRECTION FROM NEAREST TOWN OR POST OFFICE*

30 miles northwest of Lindrith

15. DISTANCE FROM PROPOSED*

LOCATION TO NEAREST
PROPERTY OR LEASE LINE, FT.
(Also to nearest drlg. unit line, if any.)

1090'

16. NO. OF ACRES IN LEASE

1280'

17. NO. OF ACRES ASSIGNED
TO THIS WELL

5/320

18. DISTANCE FROM PROPOSED LOCATION*

TO NEAREST WELL, DRILLING, COMPLETED,
OR APPLIED FOR, ON THIS LEASE, FT.

737'

19. PROPOSED DEPTH

6300'

20. ROTARY OR CABLE TOOLS

Rotary

21. ELEVATIONS (Show whether DF, RT, GR, etc.)

7003' Gr.

22. APPROX. DATE WORK WILL START*

Dec. 15, 1977

23. PROPOSED CASING AND CEMENTING PROGRAM

SIZE OF HOLE	SIZE OF CASING	WEIGHT PER FOOT	SETTING DEPTH	QUANTITY OF CEMENT
15"	10 3/4"	40.5#	300	Circ. (approx. 250 sx.)
8 3/4"	7"	23#	4100	Circ. (approx. 175 sx.)
6 1/4"	4 1/2"	10.5#	6300	Approx. 250 sx.

1. Drill 15" hole to \pm 300'. Set 10 3/4" casing. Circulate cement to surface.
2. WOC 12 hrs.
3. Install blowout preventers. Pressure test surface casing and blowout preventer to 600 psi.
4. Drill 8 3/4" hole to approximately 300' below top of Pictured Cliff or to approximately 4100' with fresh water gel mud. Log. Run 7" casing and cement with approximately 175 sx. WOC 12 hrs.
5. Air or gas drill 6 1/4" hole to 6300'. Log
6. Set 4 1/2" casing with approximately 250 sx.
7. Selectively perforate and stimulate the Mesaverde and complete as required by rules and regulations.

Gas is dedicated

IN ABOVE SPACE DESCRIBE PROPOSED PROGRAM: If proposal is to deepen or plug back, give data on present productive zone and proposed new productive zone. If proposal is to drill or deepen directionally, give pertinent data on subsurface locations and measured and true vertical depths. Give blowout preventer program, if any.

SIGNED

O.B. Whitenburg
O.B. Whitenburg

TITLE

Drlg. Engr.

DATE

10/6/77

(This space for Federal or State office use)

PERMIT NO.

APPROVAL DATE

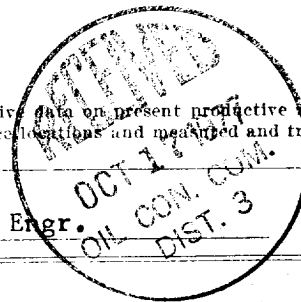
APPROVED BY

TITLE

DATE

CONDITIONS OF APPROVAL, IF ANY:

NSC R-2396



**NEW MEXICO OIL CONSERVATION COMMISSION
WELL LOCATION AND ACERAGE DEDICATION PLAT**

All distances must be from the outer boundaries of the Section

Operator CONSOLIDATED OIL AND GAS, INC.			Lease CHAMPLIN		Well No. 2 - A
Unit Letter N	Section 35	Township 27 NORTH	Range 4 WEST	County RIO ARRIBA	

Actual Footage Location of Well:

1090 feet from the SOUTH line and		1720 feet from the WEST line	
Ground Level Elev. 7003	Producing Formation Mesaverde	Pool Blanco Mesaverde	Dedicated Acreage: 320 Acres

1. Outline the acreage dedicated to the subject well by colored pencil or hachure marks on the plat below.
2. If more than one lease is dedicated to the well, outline each and identify the ownership thereof (both as to working interest and royalty),
3. If more than one lease of different ownership is dedicated to the well, have the interests of all owners been consolidated by communitization, unitization, force-pooling, etc?

() Yes () No If answer is "yes," type of consolidation

If answer is "no," list the owners and tract descriptions which have actually consolidated. (Use reverse side of this form if necessary.)

No allowable will be assigned to the well until all interests have been consolidated (by communitization, unitization, forced-pooling, or otherwise) or until a non standard unit, eliminating such interests, has been approved by the Commission.

CERTIFICATION

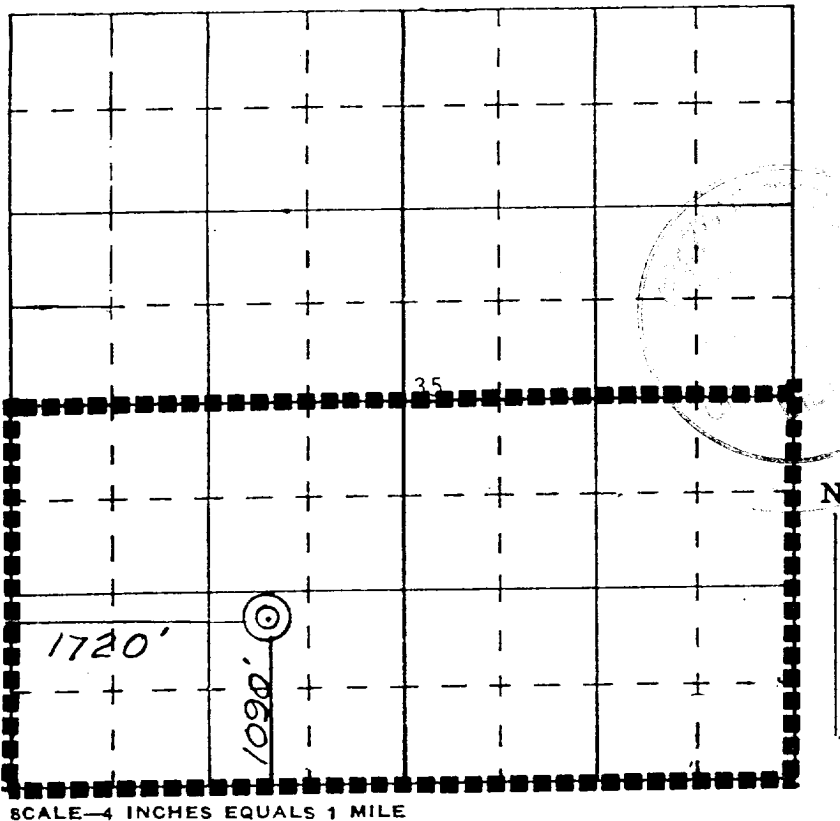
I hereby certify that the information contained herein is true and complete to the best of my knowledge and belief.

O.B. Whitenburg
 Name **O.B. Whitenburg**
 Position **Sr. Drilling Engineer**
 Company **Consolidated Oil & Gas, Inc.**
 Date **October 6, 1977**

I hereby certify that the well location shown on this plat was plotted from field notes of actual surveys made by me or under my supervision, and that the same is true and correct to the best of my knowledge and belief.

26 September 1977

Date Surveyed *James P. Leese*
 Registered Professional Engineer
 and/or Land Surveyor **James P. Leese**



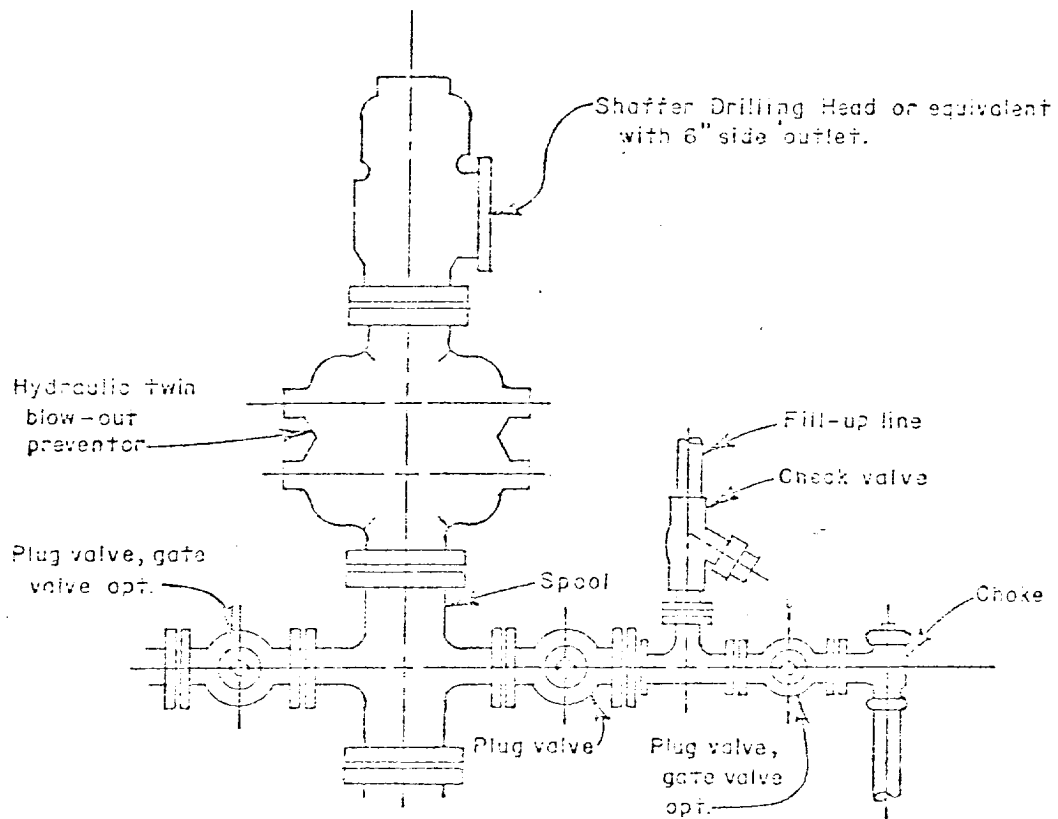


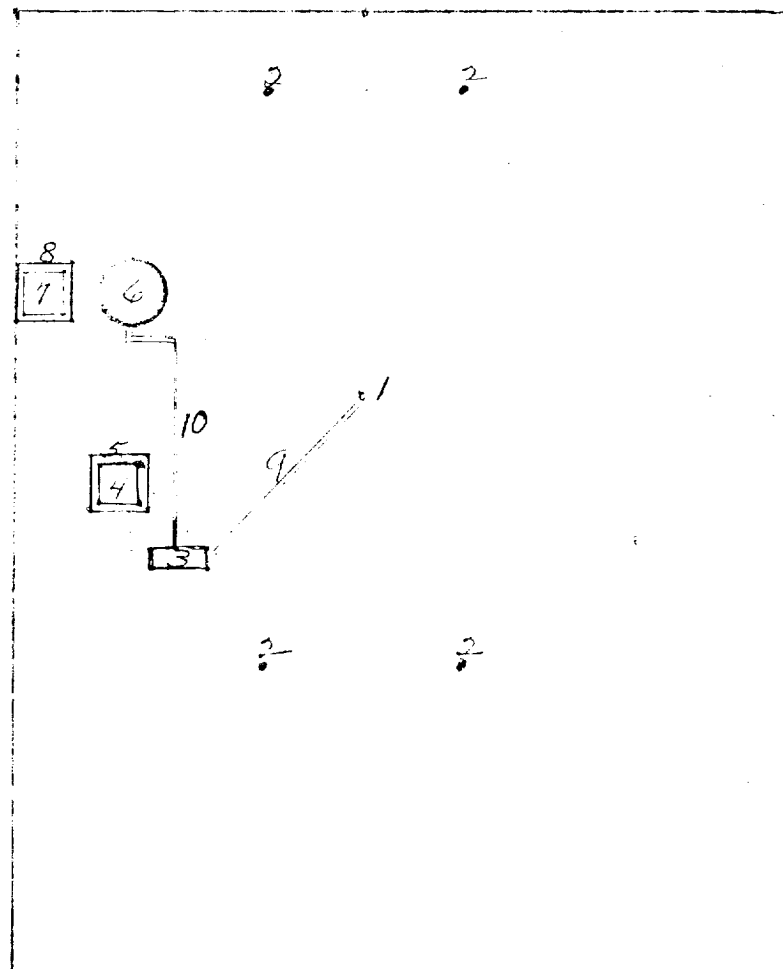
Diagram "A"



EXHIBIT #1

VICINITY MAP
CONSOLIDATED OIL & GAS, INC.
Well locations on W/2 Sec. 35,
T27N. R4W. N.M.P.M. & Arriba
County, New Mexico
Scale: 1"=2000' Date: 2/1/77
Chomplin #2A

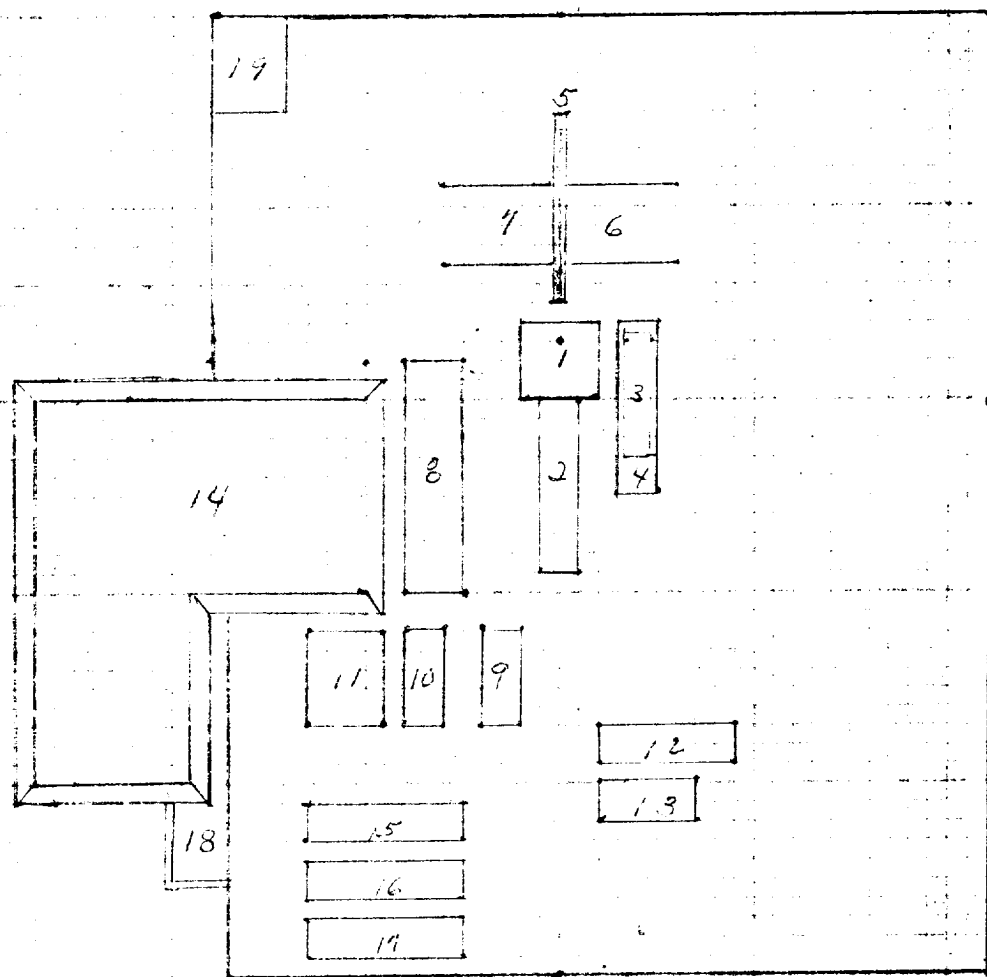
1. Well
2. Dead Men
3. Prod. Unit
4. Water Pit
5. Fence
6. 300 bbl. Oil Tank
7. Water Pit
8. Fence
9. 2" Buried flow line
10. 1½" Oil Line



1" equals 50'

Exhibit # II

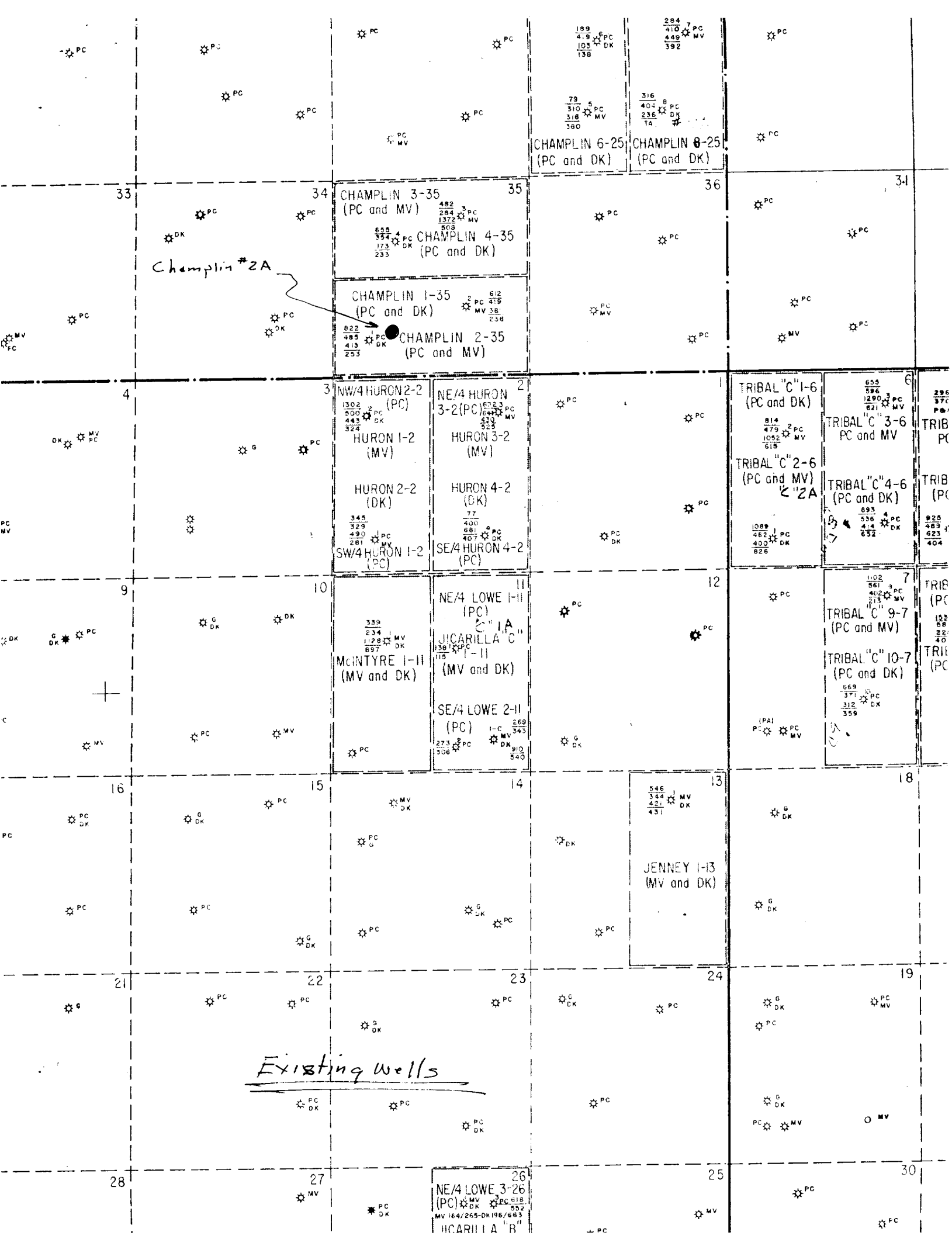
1. Sub.
2. Drive in unit
3. Doghouse
4. Water tank
5. Walk
6. Pipe racks
7. Pipe racks
8. Steel working pit
9. Pump
10. Pump
11. Mud storage
12. Light plant
13. Change house
14. Reserve pit
15. Air compressor
16. Air compressor
17. Air compressor
18. Burn Pit
19. Blow Pit



50 FT.

1" equals 50'

Location Layout



Champlin #2A

Existing wells

Development Plan For Surface Use

Champlin 2A

Consolidated Oil & Gas, Inc. - Operator

SF-079527A

Sec. 35, T27N, R4W

Rio Arriba, New Mexico

1. Existing Roads

See enclosed topographic map (Exhibit I) which shows existing improved and unimproved roads.

2. Planned Access Roads

See enclosed topographic map.

3. Location of Existing Wells

See enclosed topographic map.

4. Location of Existing and/or Proposed Facilities

See enclosed topographic map showing location of wells and facilities operated by Consolidated Oil & Gas, Inc. If production is established, the tank battery and other required producing equipment will be located per attached completion plat. (Exhibit II)

5. Location and Type of Water Supply

Drilling water will be trucked approx. 5 miles from water well in Tapacito Creek

11. Other Information

If, during operations, any historic or prehistoric ruin, monument or site, or any object of antiquity is discovered, work will be suspended and the discovery will be reported to the appropriate regulatory agency.

The area covered by the location and proposed access road is **1.7** acres.

12. Operator's Representative:

O. B. Whitenburg
P.O. Box 2038
Farmington, New Mexico 87401
Phone: Office - - 325-75-- or 7509
Home - - 325-2213

13. Certification:

I hereby certify that I, or persons under my direct supervision, have inspected the proposed drillsite and access route, that I am familiar with the conditions which presently exist; that the statements made in this plan are, to the best of my knowledge, true and correct; and that the work associated with the operations proposed herein will be performed by Consolidated Oil & Gas, Inc., its Contractors and Subcontractors in conformity with this plan and the terms and conditions under which it is approved.

10/6/77

Date

O. B. Whitenburg

Sr. Drilling Engineer

Consolidated Oil & Gas, Inc.

OPERATIONS PLAN

U.S. Geological Survey

P.O. Box 1809

Durango, Colorado 81301

Re: Application for Permit to Drill

Champlin #2A

Rio Arriba County

New Mexico

Gentlemen:

Following is the information requested in NTL-6 to accompany the permit to drill.

1. Location:

1090' FSL & 1720' FWL

2. Elevation of Unprepared Ground:

7003' Gr.

3. Geologic Name of Surface Formation:

San Jose