

UNITED STATES  
DEPARTMENT OF THE INTERIOR  
BUREAU OF LAND MANAGEMENT  
APPLICATION FOR PERMIT TO DRILL OR DEEPEN

## 1.a TYPE OF WORK

DRILL ☐DEEPEN ☒

2001 OCT -3 PM 3:44

## b. TYPE OF WELL

OIL  
WELL ☐GAS  
WELL ☒OTHER ☐SINGLE  
ZONE ☐MULTIPLE  
ZONE ☐

## 2. NAME OF OPERATOR

Pure Resources

## 3. ADDRESS AND TELEPHONE NO.

P.O. Box 850, Bloomfield New Mexico

## 4. LOCATION OF WELL (Report location clearly and in accordance with any State requirement)\*

At surface

1110' FNL and 730' FWL

At proposed prod. zone

Same as Surface

## 14. DISTANCE IN MILES AND DIRECTION FROM NEAREST TOWN OR POST OFFICE\*

40 miles Southeast from Bloomfield NM.

## 15. DISTANCE FROM PROPOSED\*

LOCATION TO NEAREST  
PROPERTY OR LEASE LINE FT (Also to  
nearest drg. Unit line, if any)

1110'

## 16. NO. OF ACRES IN LEASE

2645.09

18. DISTANCE FROM PROPOSED\* LOCATION TO  
NEAREST WELL, DRILLING, COMPLETED  
OR APPLIED FOR, ON THIS LEASE, FT.

2500'

## 19. PROPOSED DEPTH

7552'

17. NO. OF ACRES ASSIGNED TO  
THIS WELL

320

## 20. ROTARY OR CABLE TOOLS

Rotary

## 21. ELEVATIONS (Show whether DF, RT, GR,

6461' GR

## 22. APPROX. DATE WORK WILL START\*

ASAP

## 23. PROPOSED CASING AND CEMENTING PROGRAM

SIZE OF HOLE	GRADE, SIZE OF CASING	WEIGHT PER FOOT	SETTING DEPTH	QUANTITY OF CEMENT
6-1/4"	N-80 4-1/2"	11.6#	7552'	SACKS 65/35 P0Z TYPE III TOC TIED INTO 7" CAS

~~This action is subject to technical and  
procedural review pursuant to 43 CFR 3165.3  
and appeal pursuant to 43 CFR 3165.4.~~

DRILLING OPERATIONS AUTHORIZED ARE  
SUBJECT TO COMPLIANCE WITH ATTACHED  
"GENERAL REQUIREMENTS"

100' min  
ff

Pure plans to plug and abandon the Mesa Verde formation in the Rincon Unit 79A, sidetrack and deepen to the Basin Dakota and complete.

BOP- One double gate BOP with 3-1/2" pipe and blind rams, one choke manifold with adjustable and positive chokes, an accumulator will hydraulically operate BOP with 1 1/2 times the necessary capacity to close the rams and retain a minimum of 200 psi above recharge. Rotating head will be utilized during the drilling of the 6-1/4" hole.  
(Schematics are attached)

IN ABOVE SPACE DESCRIBED PROGRAM: If proposal is to deepen, give data on present productive zone and proposed new productive zone. If proposal is to drill or deepen directionally, give pertinent data on subsurface locations and measured and true vertical depths. Give blowout preventer program, if any.

24. SIGNED Mike C. Phillips TITLE San Juan Basin Area Drilling/Production Foreman DATE 9/14/01  
MIKE C. PHILLIPS  
(This space for Federal or State office use)

PERMIT NO. \_\_\_\_\_ APPROVAL DATE 10/15/01

Application approval does not warrant or certify that the applicant holds legal or equitable title to those rights in the subject lease which would entitle the application to conduct operations thereon.  
CONDITIONS OF APPROVAL, IF ANY:

APPROVED BY \_\_\_\_\_ TITLE \_\_\_\_\_ DATE 10/15/01

\*See Instructions On Reverse Side

Title 18 U.S.C. Section 1001, make it a crime for any person knowingly and willfully to make to any department or agency of the United States any false, fictitious or fraudulent statements or representations as to any matter within its jurisdiction.

NMOCD

K

DISTRICT I  
1625 N. French Dr., Hobbs, N.M. 88240

DISTRICT II  
811 South First, Artesia, N.M. 88210

DISTRICT III  
1000 E. Brames Rd., Artesia, N.M. 87410

DISTRICT IV  
2040 South Pacheco, Santa Fe, NM 87505

State of New Mexico  
Energy, Minerals & Natural Resources Department

Form C-102  
Revised August 15, 2000

OIL CONSERVATION DIVISION

2040 South Pacheco  
Santa Fe, NM 87505

Submit to Appropriate District Office  
State Lease - 4 Copies  
Fee Lease - 3 Copies

☐ AMENDED REPORT

WELL LOCATION AND ACREAGE DEDICATION PLAT

*API Number 30-039		*Pool Code 71599	*Pool Name Basin Dakota
*Property Code 26629	*Property Name RINCON UNIT		*Well Number 79A
*OGRD No. 189071	*Operator Name PURE RESOURCES		*Elevation 6461'

<sup>10</sup> Surface Location

UL or lot no.	Section	Township	Range	Lot Idn	Feet from the	North/South line	Feet from the	East/West line	County
D	17	27-N	6-W		1110'	NORTH	730'	WEST	RIO ARriba

<sup>11</sup> Bottom Hole Location If Different From Surface

UL or lot no.	Section	Township	Range	Lot Idn	Feet from the	North/South line	Feet from the	East/West line	County
*Dedicated Acres			*Joint or Infill		*Consolidation Code		*Order No.		

NO ALLOWABLE WILL BE ASSIGNED TO THIS COMPLETION UNTIL ALL INTERESTS HAVE BEEN CONSOLIDATED  
OR A NON-STANDARD UNIT HAS BEEN APPROVED BY THE DIVISION

16		17	
<p>SEC. CORNER FD. BRASS CAP BLM 1955</p> <p>1110'</p> <p>730'</p> <p>581'</p> <p>LAT. = 36-34-41 N. LONG. = 107-29-48 W.</p> <p>219'</p> <p>5314.80'</p> <p>S 01-00-47 W</p> <p>SEC. CORNER FD. BRASS CAP BLM 1955</p>		<p>N 88-34-07 E</p> <p>5245.82'</p> <p>SEC. CORNER FD. BRASS CAP BLM 1955</p> <p>RECEIVED OIL CON. DIV DIST. 3 OCT 2001</p>	
		<p>17 OPERATOR CERTIFICATION</p> <p>I hereby certify that the information contained herein is true and complete to the best of my knowledge and belief.</p> <p><i>Michael C. Phillips</i> Signature</p> <p>Michael C. Phillips Printed Name</p> <p>San Juan Basin Drilling/ Production Foreman Title</p> <p>Sept. 13th, 2001 Date</p>	
		<p>18 SURVEYOR CERTIFICATION</p> <p>I hereby certify that the well location shown on this plat was plotted from field notes of actual surveys made by me or under my supervision and that the same is true and correct to the best of my knowledge and belief.</p> <p>11-20-01 Date of Survey</p> <p>Signature and Seal of Professional Surveyor: <i>[Signature]</i> 8894 Certificate Number</p>	

4054

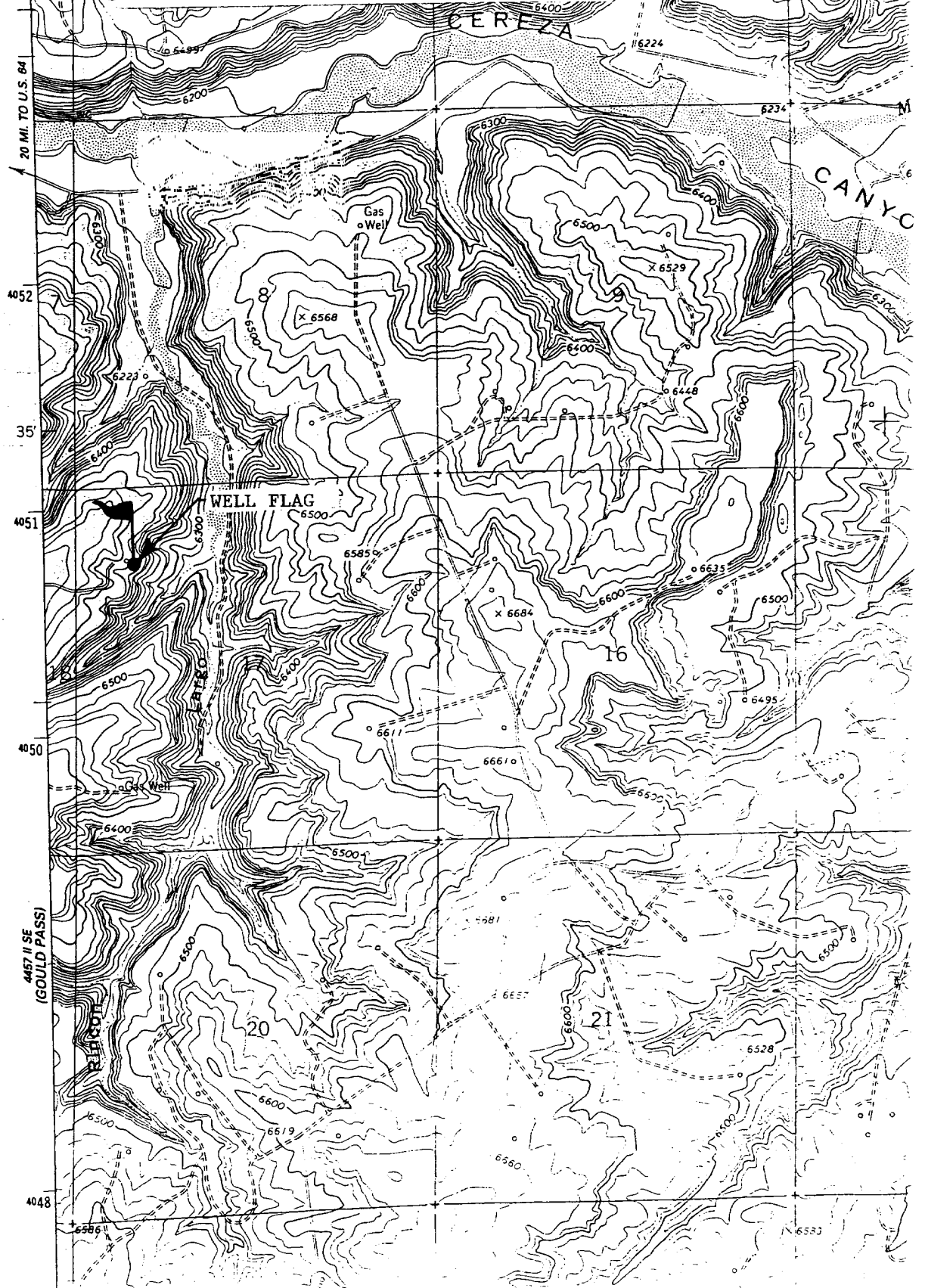
# PURE RESOURCES

## RINCON UNIT #79A

NW/4 SEC. 17, T-27-N, R-6-W, N.M.P.M.

RIO ARriba COUNTY, NEW MEXICO

1110' FNL 730' FWL



**PURE RESOURCES WELL NO. 79A (Deepening)**  
**1110' FNL, 730' FWL, SEC. 17, T-27-N, R-6-W**  
**RIO ARRIBA CO. NEW MEXICO**

**8 POINT DRILLING PLAN**

1. **ESTIMATED FORMATION TOPS**

<b><u>FORMATION NAME</u></b>	<b><u>DEPTH FROM GL</u></b>
Cliff House	4,771'
Point Lookout	5,279'
Mancos	5,708'
Tocito Sand	6,854'
Greenhorn	7,217'
Graneros	7,292'
Dakota	7,432'
Total Depth	7,542'
Permit TD	7,552'

2. **OIL, GAS, WATER, OR OTHER MINERAL BEARING ZONES**

<b><u>EXPECTED GAS ZONES</u></b>	<b><u>DEPTH FROM GL</u></b>
Mesa Verde	4771-5708'
Dakota	7432-7542'

<b><u>EXPECTED WATER ZONES</u></b>	<b><u>DEPTH FROM GL</u></b>
Covered by existing casing	

2. **PRESSURE CONTROL BOP'S AND RELATED EQUIPMENT**

Casing Head: 7" x 11" – 3000 psi W.P.

BOP Stack and Related Equipment: (See Attachment No. 1 &2).

**RINCON UNIT WELL NO. 79A**  
**DRILLING PROGRAM – PAGE 2**

One double-gate BOP with 4-1/2" and then 3-1/2" pipe and blind rams.  
One choke manifold with adjustable and positive chokes.  
An accumulator will hydraulically operate the BOP with 1-1/2 times the necessary capacity to close the rams and retain a minimum of 200psi above recharge. The remote unit will be located in the bottom "dog house" or on the ground between the "dog house" and the toolpushers trailer. A rotating head on top of the BOP stack will be utilized when necessary.

**Testing Procedure:**

The BOP and related equipment will be tested in accordance with the provisions of Onshore Oil and Gas Order No. 2.

BOP's will be operationally tested daily and each test will be logged in the IADC Daily Drilling Report.

**Bloolie Line:**

The bloolie line and related equipment will meet all requirements of Onshore Oil and Gas Order No. 2.

**4. CASING AND CEMENTINNG PROGRAM**

**SURFACE CASING (*Spud Mud*)**

<u>Age</u>	<u>Depth</u>	<u>Hole Size</u>	<u>Size</u>	<u>Weight</u>	<u>Grade</u>	<u>Thread</u>
Exist	216'	12-1/4"	9-5/8"	32.3#	K-55	ST&C

**INTERMEDIATE CASING (*FW Mud*)**

<u>Age</u>	<u>Depth</u>	<u>Hole Size</u>	<u>Size</u>	<u>Weight</u>	<u>Grade</u>	<u>Thread</u>
Exist	3437'	8-3/4"	7"	20#	K-55	ST&C

**PRODUCTION CASING (*Air Dusting*)**

<u>Age</u>	<u>Depth</u>	<u>Hole Size</u>	<u>Size</u>	<u>Weight</u>	<u>Grade</u>	<u>Thread</u>
New	0-TD	6-1/4"	4-1/2"	11.6#	I-80	LT&C

**MINIMUM SAFETY FACTORS**

Collapse: 1.125

Tension: 1.8

Burst: 1.0

**RINCON UNIT WELL NO. 79A**  
**DRILLING PROGRAM – PAGE 3**

**Cementing Program**

1. The 4-1/2" production casing will be cemented and tied into the intermediate casing with 600 sacks 65/35 Poz Type III cement + 1/4 #/sack CF, 6% gel, 10#/sack CSE + 2% KCL, FL-62 + .2% CD-32, @ (2.06 CU/FT) 12.5 ppg. *100' min overlap*  
Casing hardware for the production string to include guide shoe, float collar, centralized shoe joint and next five joints. Centralizers across producing zones.

**Auxiliary Equipment**

A kelly cock will be used with handle available. A full opening safety valve will be used when Kelly is out of string. Rotating head while air drilling. Will have vacuum diversion on blooie line.

5. **DRILLING FLUID PROGRAM**

<u>Depth</u>	<u>Type</u>	<u>Weight</u>	<u>Vis</u>	<u>W.L.</u>
Window	Fresh Water Gel	8.3-8.6	30-35	N.C.
3160'-TD	Air	N.C.	N.C.	N.C.

6. **CORING, TESTING & LOGGING PROGRAM**

DST's: None Planned.

Logging: Cased hole GR/Neutron/CBL for cement top.

Cores: None planned.

Completion: During completion, the drilling rig will be removed and a completion rig will be moved in and BOP's of a similar pressure rating will be used. The Dakota and Mesa Verde will be selectively perforated and individually hydraulically stimulated. The wells will be commingled with 2-3/8" production string. A "Well Completion or Re-completion Report and Log" (Form 3160-4) will be submitted within 30 days after completion of the well per 43 CFR 3164. Two copies of all logs geologic summaries, sample descriptions, and all other data obtained during the drilling, workover, and completion operations will be filed with form 3160-4.

ASSET GROUP: PB/RM  
FIELD: Rincon  
LEASE/UNIT: Mesa Verde  
COUNTY: Rio Arriba



DATE: Sep. 11, 2001  
BY: M.C. Phillips  
WELL: #79A  
STATE: New Mexico

SPUD DATE: 9/11/79  
COMP. DATE: 1/28/80  
STATUS: Producer

KB = 6,470'  
Elevation = 6,461'  
TD = 5,749'  
PBTD = 5,730'

Before

9-5/8" @ 216'. 32.3 K-55, ST&C Cmt'd w/190 sxs. Circ.

TOC @ 2450'.

7" @ 3437'. 20# K-55 ST&C. Cmt'd w/185sx. Cmt'd @ 2450'.



**Mesa Verde**

4767, 4789, 4796, 4803, 4810, 4824, 4831, 4838, 4845, 4852, 4988, 5094', 1 ispf.

**Mesa Verde**

5287, 5292, 5297, 5302, 5318, 5325, 5336, 5342, 5348, 5368, 5372, 5391, 5432

5474, 5562, 5574, 5593, 5666, 5707', 1 ispf.

4-1/2" L 3274'-5749' 10.5# K-55, ST&C. Cmt with 310sx. Cmt Circ.

CBL 2  
Gyro -  
Scraper

ASSET GROUP: PB/RM  
FIELD: Rincon  
LEASE/UNIT: Mesa Verde  
COUNTY: Rio Arriba



DATE: Sep. 11, 2001  
BY: M.C. Phillips  
WELL: #79A  
STATE: New Mexico

SPUD DATE: 9/11/79  
COMP. DATE: 1/28/80  
STATUS: Producer

KB = 6,470'  
Elevation = 6,461'  
TD = 5,749'  
PBTD = 5,730'

After

