

UNITED STATES
DEPARTMENT OF THE INTERIOR
GEOLOGICAL SURVEY

30-039-21858

APPLICATION FOR PERMIT TO DRILL, DEEPEN, OR PLUG BACK

1a. TYPE OF WORK

DRILL ☒DEEPEN ☐PLUG BACK ☐

b. TYPE OF WELL

OIL
WELL ☐GAS
WELL ☒

OTHER

SINGLE
ZONE ☒MULTIPLE
ZONE ☐

2. NAME OF OPERATOR

El Paso Natural Gas Company

3. ADDRESS OF OPERATOR

PO Box 990, Farmington, NM 87401

4. LOCATION OF WELL (Report location clearly and in accordance with any State requirements.)*

At surface 1770'S, 1610'E

At proposed prod. zone

same

14. DISTANCE IN MILES AND DIRECTION FROM NEAREST TOWN OR POST OFFICE*

35 miles East of Blanco, NM

15. DISTANCE FROM PROPOSED*

LOCATION TO NEAREST
PROPERTY OR LEASE LINE, FT.
(Also to nearest drlg. unit line, if any)

1610'

16. NO. OF ACRES IN LEASE

Unit

17. NO. OF ACRES ASSIGNED
TO THIS WELL

319.69

18. DISTANCE FROM PROPOSED LOCATION*
TO NEAREST WELL, DRILLING, COMPLETED,
OR APPLIED FOR, ON THIS LEASE, FT.

900'

19. PROPOSED DEPTH

6055'

20. ROTARY OR CABLE TOOLS

Rotary

21. ELEVATIONS (Show whether DF, RT, GR, etc.)

6585' GR

22. APPROX. DATE WORK WILL START*

23.

PROPOSED CASING AND CEMENTING PROGRAM

| SIZE OF HOLE | SIZE OF CASING | WEIGHT PER FOOT | SETTING DEPTH | QUANTITY OF CEMENT |
|--------------|----------------|-----------------|---------------|-------------------------------|
| 13 3/4" | 9 5/8" | 32.3# | 200' | 224 cu.ft. to circulate |
| 8 3/4" | 7" | 20.0# | 3775' | 229 cu.ft. to cover Ojo Alamo |
| 6 1/4" | 4 1/2" liner | 10.5# | 3625-6055' | 424 cu.ft. to fill to 3625' |

Selectively perforate and sandwater fracture the Mesa Verde formation.

A 3000 psi WP and 6000 psi test double gate preventer equipped with blind and pipe rams will be used for blow out prevention on this well.

This gas is dedicated.

The E/2 of Section 4 is dedicated to this well.

IN ABOVE SPACE DESCRIBE PROPOSED PROGRAM: If proposal is to deepen or plug back, give data on present productive zone and proposed new productive zone. If proposal is to drill or deepen directionally, give pertinent data on subsurface locations and measured and true vertical depths. Give blowout preventer program, if any.

24.

SIGNED

N. B. Lucio

TITLE

Drilling Clerk

DATE

August 17, 1978

(This space for Federal or State office use)

PERMIT NO.

APPROVAL DATE

APPROVED BY

TITLE

DATE

CONDITIONS OF APPROVAL, IF ANY:

ok Frank

AUG 22 1978

NEW MEXICO OIL CONSERVATION COMMISSION
WELL LOCATION AND ACREAGE DEDICATION PLAT

Form C-102
Supersedes C-120
Effective 1-1-65

All distances must be from the outer boundaries of the Section.

| | | | | | |
|--|---------------------|------------------------|--|-----------------------------|------------------------|
| Operator EL PASO NATURAL GAS COMPANY | | | Lease SAN JUAN 27-5 UNIT (SF-079393) | | Well No. 60A |
| Unit Letter J | Section 4 | Township 27N | Range 5W | County Rio Arriba | |

Actual Footage Location of Well:

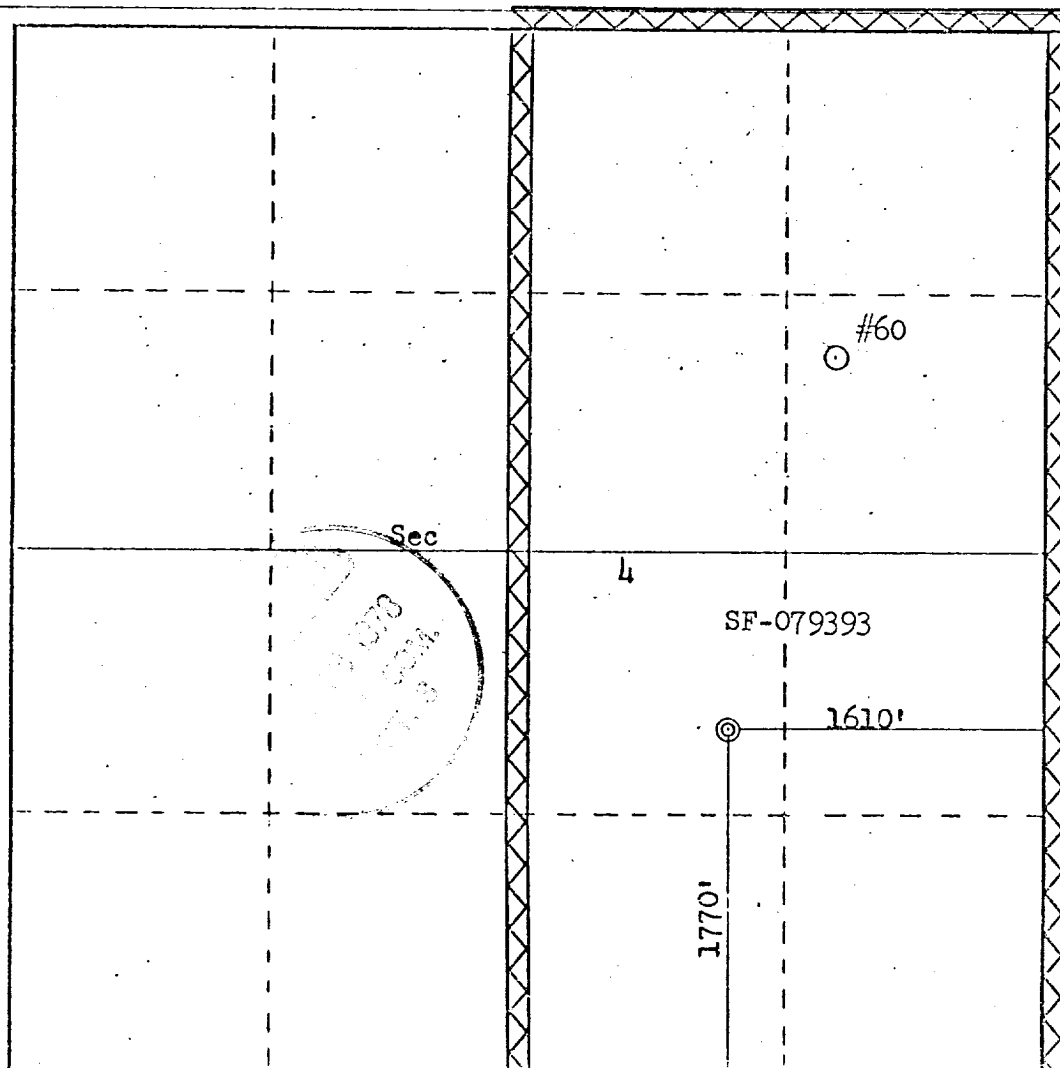
| | | | | | |
|-----------------------------------|--|----------|----------------------------------|---|------|
| 1770 | feet from the South | line and | 1610 | feet from the East | line |
| Ground Level Elev. 6585 | Producing Formation Mesa Verde | | Pool Blanco Mesa Verde | Dedicated Acreage: 319.69 Acres | |

1. Outline the acreage dedicated to the subject well by colored pencil or hachure marks on the plat below.
2. If more than one lease is dedicated to the well, outline each and identify the ownership thereof (both as to working interest and royalty).
3. If more than one lease of different ownership is dedicated to the well, have the interests of all owners been consolidated by communitization, unitization, force-pooling, etc?

☐ Yes ☒ No If answer is "yes," type of consolidation Unitization

If answer is "no," list the owners and tract descriptions which have actually been consolidated. (Use reverse side of this form if necessary.) _____

No allowable will be assigned to the well until all interests have been consolidated (by communitization, unitization, forced-pooling, or otherwise) or until a non-standard unit, eliminating such interests, has been approved by the Commission.



CERTIFICATION

I hereby certify that the information contained herein is true and complete to the best of my knowledge and belief.

M. P. Linder

Name

Drilling Clerk

Position

El Paso Natural Gas Co.

Company

August 18, 1978

Date

I hereby certify that the well location shown on this plat was plotted from field notes of actual surveys made by me or under my supervision, and that the same is true and correct to the best of my knowledge and belief.

Date Surveyed

July 23, 1978

by State Engineer

under L. 1-1-65

Fred B. Kerr Jr.

Fred B. Kerr Jr.

Certification No.

3950

0 330 660 990 1320 1650 1980 2310 2640 2970 3300 3630 3960 4290 4620 4950 5280 5610 5940 6270 6600

Multi-Point Surface Use Plan
San Juan 27-5 Unit #60A

1. Existing Road - Please refer to Map No. 1 which shows the existing roads. New roads which will be required have been marked on this map. All existing and new roads will be properly maintained during the duration of this project.
2. Planned Access Roads - Please refer to Map No. 1. The grade of the access roads will be consistent with that of the local terrain. The road surface will not exceed twenty feet (20') in width. Upon completion of the project, the access road will be adequately drained to control soil erosion. Drainage facilities may include ditches, water bars, culverts or any other measure deemed necessary by trained Company personnel to insure proper drainage. Gates and/or cattleguards will be installed if necessary.
3. Location of Existing Wells - Please refer to Map No. 2.
4. Location of Tank Batteries, Production Facilities, and Production Gathering and Service Lines - Please refer to Maps No. 1 and No. 2. Map No. 2 shows the existing gas gathering lines. Map No. 1 shows the existing roads and new proposed access roads. All known production facilities are shown on these two maps.
5. Location and Type of Water Supply - Water for the proposed project will be obtained from the 27-5 Water Well #1.
6. Source of Construction Materials - No additional materials will be required to build either the access road or the proposed location.
7. Methods of Handling Waste Materials - All garbage and trash materials will be put into a burn pit shown on the attached Location Plat No. 1. When clean-up operations are begun on the proposed project, the burn pit with its refuse will be buried to a depth of at least three feet (3'). A latrine, the location of which is also shown on Plat No. 1,

7. cont'd. will be provided for human waste. If large amounts of liquids are left in the reserve pit after completion of the project, the pit will be fenced until the liquids have had adequate time to dry. The location clean-up will not take place until such time as the reserve pit can be properly covered over to prevent run-off from carrying any of these materials into the watershed. No earthen pit will be located on natural drainages; all earthen pits will be so constructed as to prevent leakage from occurring.
8. Ancillary Facilities - No camps or airstrips will be associated with this project.
9. Wellsite Layout - Please refer to the attached Plat No. 1.
10. Plans for Restoration of the Surface - After completion of the proposed project, the location will be cleaned and leveled. The location will be left in such a condition that will enable reseeding operations to be carried out. Seed mixture as designated by the responsible government agency will be used. The reseeding operation will be performed during the time period set forth by the regulatory body. The location production equipment will be painted as designated by the responsible government agency.
11. Other Information - The terrain is sandstone ledges and rolling hills with pinon and cedar growing. Cattle graze the proposed project site.
12. Operator's Representative - W.D. Dawson, PO Box 990, Farmington, NM
13. Certification - I hereby certify that I, or persons under my direct supervision, have inspected the proposed drillsite and access route; that I am familiar with the conditions which presently exist; that the statements made in this plan are, to the best of my knowledge, true and correct; and that the work associated with the operations proposed herein will be performed by El Paso Natural Gas Company and its contractors and sub-contractors in conformity with this plan and the terms and conditions under which it is approved.



D. C. Walker
Project Drilling Engineer

August 21, 1978

Operations Plan
San Juan 27-5 Unit #60A

I. Location: 1770'S, 1610'E, Section 4, T-27-N, R-5-W, Rio Arriba County, NM

Field: Blanco Mesa Verde

Elevation: 6585'GR

II. Geology:

| | | | | |
|--------------------|------------|----------|---------------|-------|
| A. Formation Tops: | Surface | San Jose | Lewis | 3575' |
| | Ojo Alamo | 2765' | Mesa Verde | 5085' |
| | Kirtland | 2965' | Menefee | 5235' |
| | Fruitland | 3195' | Point Lookout | 5605' |
| | Pic.Cliffs | 3435' | Total Depth | 6055' |

B. Logging Program: GR-Ind. and GR-Density at Total Depth.

C. Coring Program: none

D. Natural Gauges: 5075', 5225', 5595' and at Total Depth.
Also gauge any noticeable increase in gas. Record all gauges in daily drilling report and on morning report.

III. Drilling:

A. Mud Program: mud from surface to 3775'. Gas from intermediate casing to Total Depth.

IV. Materials:

| | | | | |
|--------------------|------------------|--------------|--------------------|----------------------|
| A. Casing Program: | <u>Hole Size</u> | <u>Depth</u> | <u>Casing Size</u> | <u>Wt.&Grade</u> |
| | 13 3/4" | 200' | 9 5/8" | 32.3# H-40 |
| | 8 3/4" | 3775' | 7" | 20.0# K-55 |
| | 6 1/4" | 3625'-6055' | 4 1/2" | 10.5# K-55 |

B. Float Equipment: 9 5/8" surface casing - Pathfinder guide shoe (Part #2006-1-012).

7" intermediate casing - Pathfinder guide shoe (Part #1003-1-007) and Pathfinder self-fill insert float valve (Part #2010-6-007), 5 Pathfinder stabilizers (Part #107-10) every other joint above shoe. Run float two joints above shoe.

4 1/2" liner - 4 1/2" liner hanger with neoprene packoff. Pathfinder geyser shoe (Part #2017-1-050) and Larkin flapper type float collar (fig. 404 M&F).

C. Tubing: 6055' of 2 3/8", 4.7#, J-55 8rd EUE tubing with a common pump seating nipple one joint above bottom. Tubing will be open ended.

D. Wellhead Equipment: 10" 900 x 9 5/8" casing head. 10" 900 x 6" 900 xmas tree.

Operations Plan - San Juan 27-5 Unit #60A

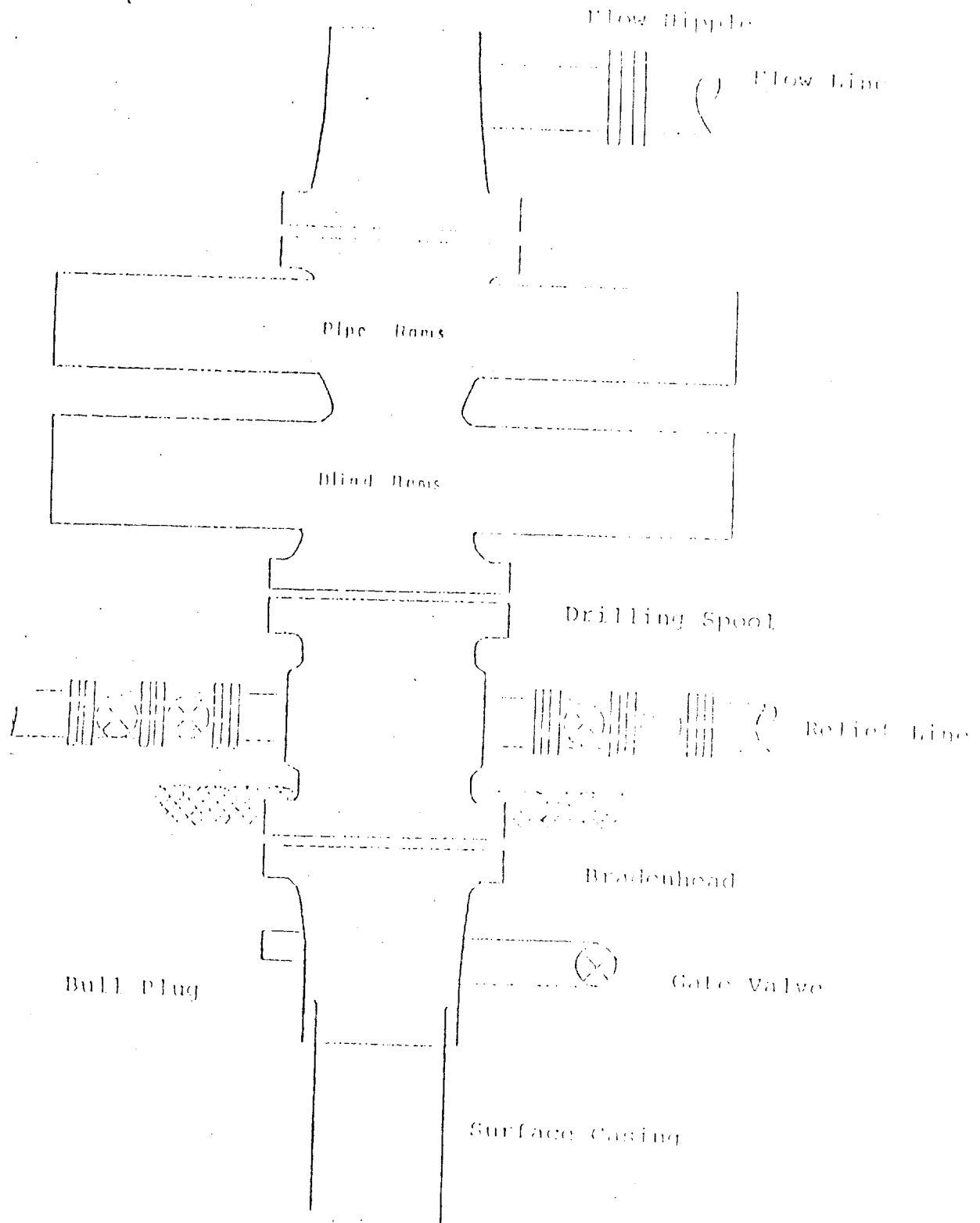
V. Cementing:

9 5/8" surface casing - use 190 sks. of Class "B" cement with 1/4# gel-flake per sack and 3% calcium chloride (224 cu.ft. of slurry, 100% excess to circulate to surface). WOC 12 hours. Test casing to 600#/30 minutes.

7" intermediate casing - use 68 sks. of 65/35 Class "B" Poz with 6% gel and 2% calcium chloride (8.3 gallons of water per sack) followed by 100 sks. of Class "B" with 2% calcium chloride (229 cu.ft. of slurry, 50% excess to cover Ojo Alamo). Run temperature survey at 8 hours. WOC 12 hours. Test casing to 1200#/30 minutes.

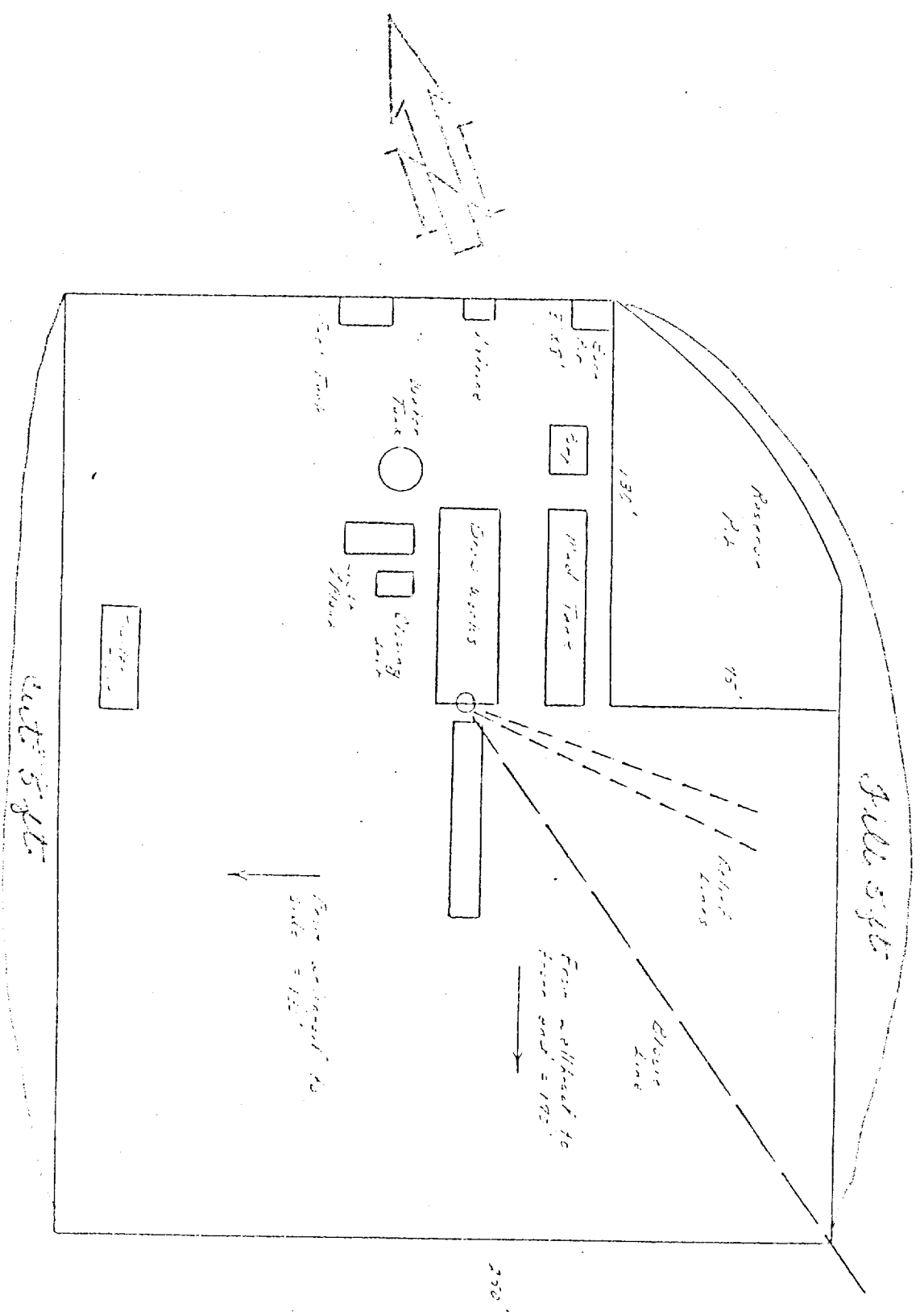
4 1/2" liner - precede cement with 20 barrels of gel water (2 sks. gel) Cement with 305 sks. of 50/50 Class "B" Poz with 2% gel, 0.6% Halad-9, 6.25# gilsonite plus 1/4# Flocele per sack (424 cu.ft. of slurry, 70% excess to circulate liner). WOC 18 hours.

Typical B.O.P. Installation for Mega Verde Well



Series 900 Double Gate BOP, rated
at 3000 psi Working Pressure
When gas drilling operations begin a Shaffer type 50
or equivalent rotating head is installed on top of the
flow nipple and the flow line is converted into a blowie line

El Paso Natural Gas Company
 Typical location with gas main trunk and electric wells

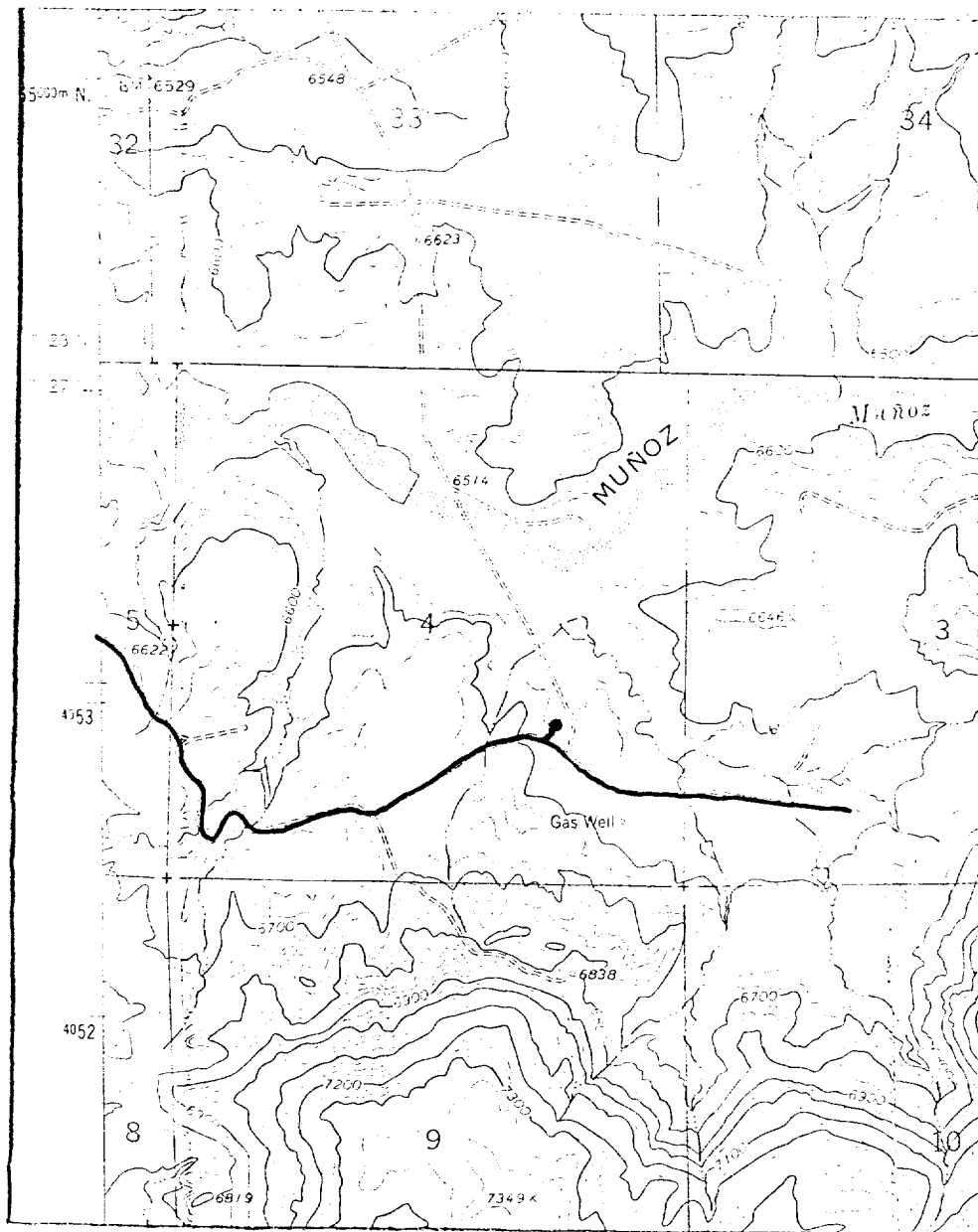


EL PASO NATURAL GAS COMPANY
 San Juan 27-5 Unit #60A
 SE 4-27-5

R-5-W

T
28
N

T
27
N

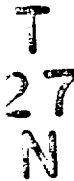


Map #1

LEGEND OF RIGHT-OF-WAYS

| | |
|--------------------------|---------|
| EXISTING ROADS | ————— |
| EXISTING PIPELINES | —+ + +— |
| EXISTING ROAD & PIPELINE | —+ + +— |
| PROPOSED ROADS | ————— |
| PROPOSED PIPELINES | —+ + +— |
| PROPOSED ROAD & PIPELINE | —+ + +— |

R-5-W



Proposed Location ●