

UNITED STATES
DEPARTMENT OF THE INTERIOR
GEOLOGICAL SURVEY

APPLICATION FOR PERMIT TO DRILL, DEEPEN, OR PLUG BACK

1a. TYPE OF WORK

DRILL ☒DEEPEN ☐PLUG BACK ☐

b. TYPE OF WELL

OIL
WELL ☐GAS
WELL ☒

OTHER

SINGLE
ZONE ☐MULTIPLE
ZONE ☒

2. NAME OF OPERATOR

El Paso Natural Gas Company

3. ADDRESS OF OPERATOR

PO Box 289, Farmington, NM 87401

4. LOCATION OF WELL (Report location clearly and in accordance with any State requirements.)*

At surface

805'N, 1810'W

At proposed prod. zone

same

14. DISTANCE IN MILES AND DIRECTION FROM NEAREST TOWN OR POST OFFICE*

24 miles southeast of Bloomfield, NM

15. DISTANCE FROM PROPOSED*

LOCATION TO NEAREST
PROPERTY OR LEASE LINE, FT.
(Also to nearest drlg. unit line, if any)

805'

16. NO. OF ACRES IN LEASE

unit

17. NO. OF ACRES ASSIGNED
TO THIS WELL

168.86

18. DISTANCE FROM PROPOSED LOCATION*
TO NEAREST WELL, DRILLING, COMPLETED,
OR APPLIED FOR, ON THIS LEASE, FT.

2300'

19. PROPOSED DEPTH

4100'

20. ROTARY OR CABLE TOOLS

Rotary

21. ELEVATIONS (Show whether DF, RT, GR, etc.)

6698'GL

22. APPROX. DATE WORK WILL START*

23.

PROPOSED CASING AND CEMENTING PROGRAM

SIZE OF HOLE	SIZE OF CASING	WEIGHT PER FOOT	SETTING DEPTH	QUANTITY OF CEMENT
13 3/4"	9 5/8"	36.0#	120'	142 cu.ft. to circulate
8 3/4"	2 7/8"	6.4#	3250'	445 cu.ft. to cover Ojo Alamo
7 7/8"	2 7/8"	6.4#	4100'	422 cu.ft. to cover Lewis

Selectively perforate and sandwater fracture the Pictured Cliffs and Chacra formation.

A 3000 psi WP and 6000 psi test double gate preventer equipped with blind and pipe rams will be used for blow out prevention on this well.

This gas is dedicated.

The NW/4 of Section 35 is dedicated to this well.

IN ABOVE SPACE DESCRIBE PROPOSED PROGRAM: If proposal is to deepen or plug back, give data on present production and proposed new productive zone. If proposal is to drill or deepen directionally, give pertinent data on subsurface locations and measured and true vertical depths. Give blowout preventer program, if any.

24.

SIGNED

A. G. Brisco

TITLE

Drilling Clerk

DATE

10-18-79

(This space for Federal or State office use)

PERMIT NO.

APPROVAL DATE

APPROVED BY

TITLE

DATE

CONDITIONS OF APPROVAL, IF ANY:

P.C. NW 4 302

oh 3rd

*See Instructions On Reverse Side

All distances must be from the outer boundaries of the Section.

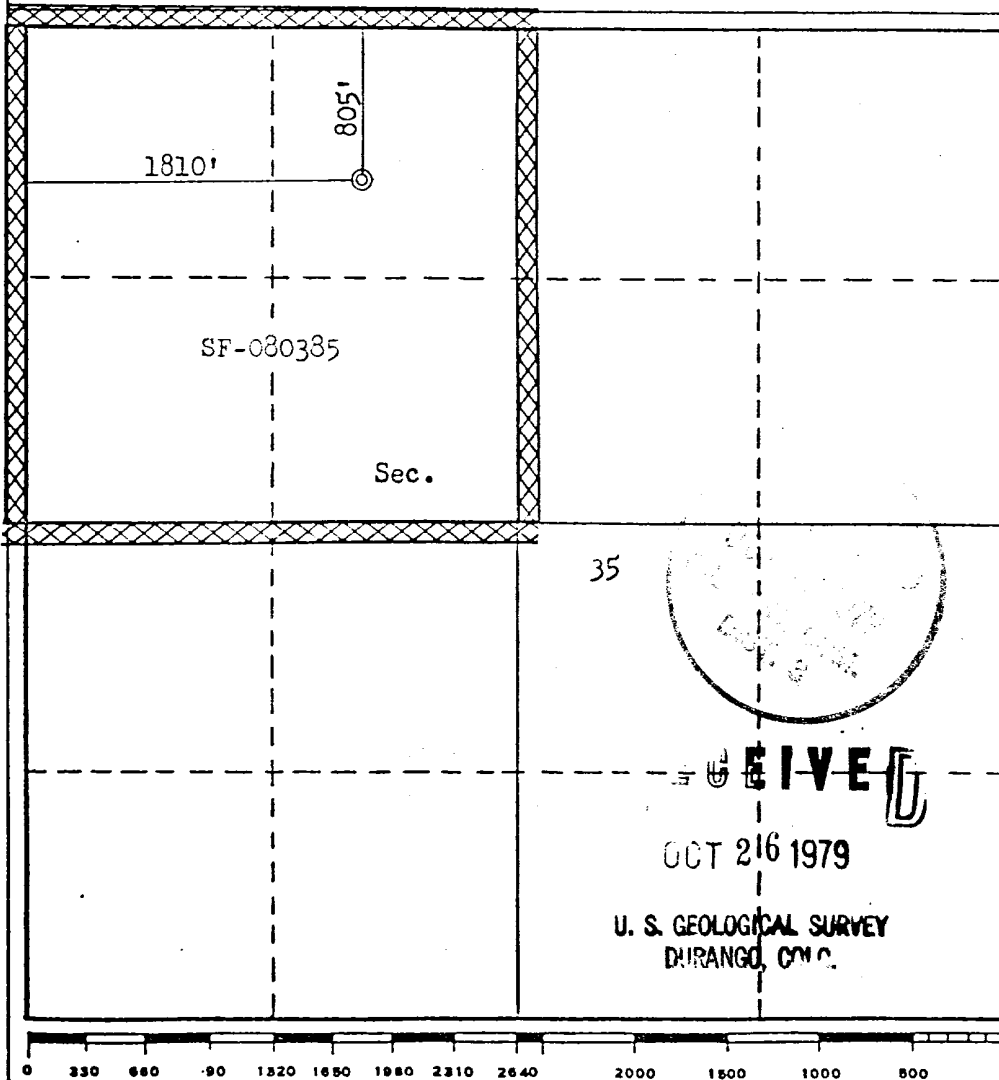
Operator EL PASO NATURAL GAS COMPANY			Lease RINCON UNIT (SF-080385)		Well No. 18R
Unit Letter C	Section 35	Township 27N	Range 7W	County Rio Arriba	
Actual Footage Location of Well: 805 feet from the North line and 1810 feet from the West line					
Ground Level Elev. 6698	Producing Formation PICTURED CLIFFS - CHACRA		Pool SQ BLANCO PICTURED CLIFFS UNDESIGNATED CHACRA		Dedicated Acreage: 168.86 & 168.86 Acres

1. Outline the acreage dedicated to the subject well by colored pencil or hachure marks on the plat below.
2. If more than one lease is dedicated to the well, outline each and identify the ownership thereof (both as to working interest and royalty).
3. If more than one lease of different ownership is dedicated to the well, have the interests of all owners been consolidated by communitization, unitization, force-pooling, etc?

☒ Yes ☐ No If answer is "yes," type of consolidation Unitization

If answer is "no," list the owners and tract descriptions which have actually been consolidated. (Use reverse side of this form if necessary.)

No allowable will be assigned to the well until all interests have been consolidated (by communitization, unitization, forced-pooling, or otherwise) or until a non-standard unit, eliminating such interests, has been approved by the Commission.



CERTIFICATION

I hereby certify that the information contained herein is true and complete to the best of my knowledge and belief.

A. P. Guad
Name

Drilling Clerk
Position

El Paso Natural Gas Co.
Company

October 18, 1979
Date

I hereby certify that the well location shown on this plat was plotted from field notes of actual surveys made by me or under my supervision, and that the same is true and correct to the best of my knowledge and belief.

Date Surveyed

September 4, 1979

Registered Professional Engineer
and/or Land Surveyor

Fred B. Kerr Jr.
Fred B. Kerr Jr.

Certificate No.

3950

Multi-Point Surface Use Plan

Rincon Unit #18R

1. Existing Road - Please refer to Map No. 1 which shows the existing roads. New roads which will be required have been marked on this map. All existing and new roads will be properly maintained during the duration of this project.
2. Planned Access Roads - Please refer to Map No. 1. The grade of the access roads will be consistent with that of the local terrain. The road surface will not exceed twenty feet (20') in width. Upon completion of the project, the access road will be adequately drained to control soil erosion. Drainage facilities may include ditches, water bars, culverts or any other measure deemed necessary by trained Company personnel to insure proper drainage. Gates and/or cattleguards will be installed if necessary.
3. Location of Existing Wells - Please refer to Map No. 2.
4. Location of Tank Batteries, Production Facilities, and Production Gathering and Service Lines - Please refer to Maps No. 1 and No. 2. Map No. 2 shows the existing gas gathering lines. Map No. 1 shows the existing roads and new proposed access roads. All known production facilities are shown on these two maps.
5. Location and Type of Water Supply - Water for the proposed project will be obtained from Gould's Pass Water Well.
6. Source of Construction Materials - No additional materials will be required to build either the access road or the proposed location.
7. Methods of Handling Waste Materials - All garbage and trash materials will be put into a burn pit shown on the attached Location Plat No. 1. When clean-up operations are begun on the proposed project, the burn pit with its refuse will be buried to a depth of at least three feet (3'). A latrine, the location of which is also shown on Plat No. 1,

GIVE

OCT 26 1979

7. cont'd. will be provided for human waste. If large amounts of liquids are left in the reserve pit after completion of the project, the pit will be fenced until the liquids have had adequate time to dry. The location clean-up will not take place until such time as the reserve pit can be properly covered over to prevent run-off from carrying any of these materials into the watershed. No earthen pit will be located on natural drainages; all earthen pits will be so constructed as to prevent leakage from occurring.
8. Ancillary Facilities - No camps or airstrips will be associated with this project.
9. Wellsite Layout - Please refer to the attached Plat No. 1.
10. Plans for Restoration of the Surface - After completion of the proposed project, the location will be cleaned and leveled. The location will be left in such a condition that will enable reseeding operations to be carried out. Seed mixture as designated by the responsible government agency will be used. The reseeding operation will be performed during the time period set forth by the regulatory body. The location production equipment will be painted as designated by the responsible government agency.
11. Other Information - The terrain is sagebrush flats with sagebrush growing. Cattle and deer are occasionally seen on the proposed project site.
12. Operator's Representative - W.D. Dawson, PO Box 990, Farmington, NM
13. Certification - I hereby certify that I, or persons under my direct supervision, have inspected the proposed drillsite and access route; that I am familiar with the conditions which presently exist; that the statements made in this plan are, to the best of my knowledge, true and correct; and that the work associated with the operations proposed herein will be performed by El Paso Natural Gas Company and its contractors and sub-contractors in conformity with this plan and the terms and conditions under which it is approved.

L. A. Aimes

L. A. Aimes

Project Drilling Engineer

- FIVE

OCT 26 1979

U. S. GEOLOGICAL SURVEY
DURANGO, CO 813

October

I. Location: 805'N, 1810'W, Section 35, T-27-N, R-7-W, Rio Arriba Co

Field: So. Blanco PC & Undes. Chacra

Elevation: 6698'GL

II. Geology:

A. Surface Formation: San Jose

Sub-surface Formation Tops:
Ojo Alamo 2343'
Kirtland 2435'
Fruitland 2813'

Pictured Cliffs
Lewis
Chacra
Total Depth

3056'
3140'
3960'
4100'

B. Logging Program: Induction Electric and Gamma Ray Density at TD.
C. Coring: none
D. Testing: none

III. Drilling:

A. Anticipated Starting Date and Duration of the Project:
1980 Drilling Program - approximately 6 days to complete.

B. Circulating Medium: mud from surface to Total Depth.

IV. Materials:

A. Casing Program:

Hole Size	Depth	Csg. Size
13 3/4"	120'	9 5/8"
8 3/4"	3250'	2 7/8"
6 3/4"	4100'	2 7/8"

Wt. & Grade
36.0# K-55
6.4# J-55
6.4# J-55

B. Float Equipment: 8 5/8" surface casing - cement guide shoe.
2 7/8" production casing - Chacra - 10" shoe joint with notched collar on bottom and latch down baffle on top. Use two 3 1/16" rubber balls and one Omega plug to displace cement. Use 3 1/4" ID plug container head. Run 7 centralizers, one on each of the bottom 7 joints. Pictured Cliffs - all collars beveled, 10' shoe joint with guide shoe on bottom and latch down baffle on top. Two 3 1/16" balls and one Omega plug to displace cement. Use 3 1/4" ID plug container head. Run 12 rubber 2 7/8" x 4 1/8" turbilizers, 2 per joint from the bottom up.

C. Tubing: none

GEIVE

OCT 26 1979

U. S. GEOLOGICAL SURVEY
DURANGO, COLO.

D. Wellhead Equipment: wellhead for 9 5/8" casing with dual
2 7/8" mandrels.

V. Cementing:

9 5/8" surface casing - 120 sks. of Class "B" cement with 1/4# gel-flake per sack and 3% calcium chloride (142 cu.ft. of slurry, 100% excess to circulate to surface). WOC 12 hrs. Test casing wellhead and BOP to 600#/30 minutes.

2 7/8" production -

Pictured Cliffs - use 239 sks. of 65/35 Class "B" Pozmix with 6% gel, 2% calcium chloride, 8.3 gallons water per sack followed by 56 sks. Class "B" neat cement (445 cu.ft. of slurry, 50% excess to cover the Ojo Alamo). Spot 50 gallons of 7 1/2% acid on top of plugs.

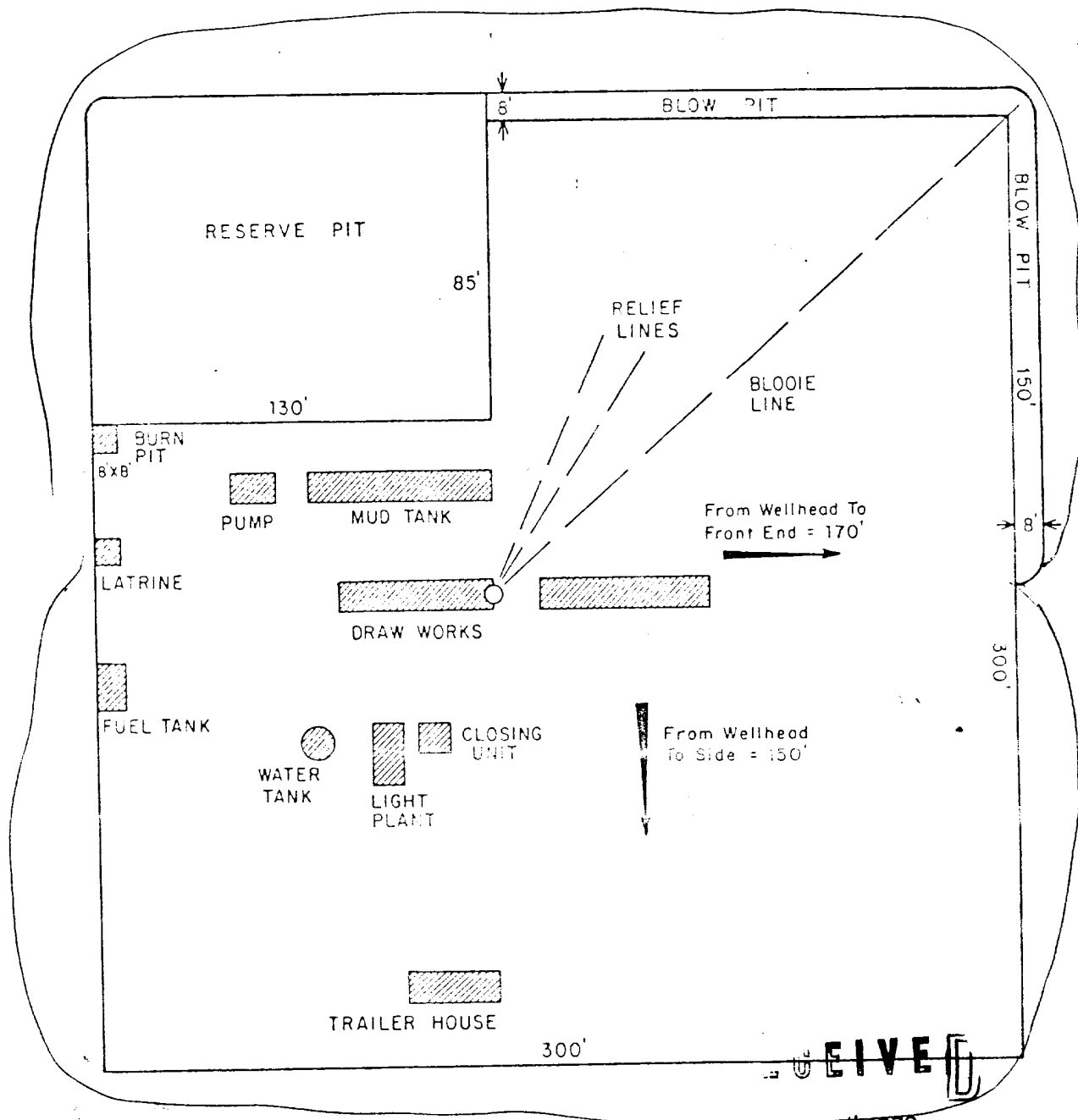
Chacra - use 209 sks. of 65/35 Class "B" Pozmix cement with 6% gel, 2% calcium chloride and 8.3 gallons water per sack followed by 80 sks. of Class "B" neat cement (422 cu.ft. of slurry, 50% excess to cover the top of the Lewis). Spot 50 gallons of 7 1/2% acetic acid on top of plugs. Run temperature survey in Chacra after 12 hrs. Check total depth in Pictured Cliffs strings. WOC 18 hours.

Cement Chacra string first then the Pictured Cliffs string after plug is down on the Chacra.

- 6 EIVE 

OCT 26 1979

U. S. GEOLOGICAL SURVEY
DURANGO, COLO.



EIVE

OCT 26 1979

U. S. GEOLOGICAL SURVEY
DURANGO, COLO.

				ENG. REC.		DATE
				DRAWN	J.L.H.	8-16-78
				CHECKED		
				CHECKED		
				PROJ. APP		
PRT.	SEP.	DATE	TO	W.O.	DESIGN	
PRINT RECORD				W.O.		

e El Paso Natural Gas Company

TYPICAL LOCATION PLAT FOR
MESAVERDE OR DAKOTA DRILL SITE

SCALE: 1" = 50'

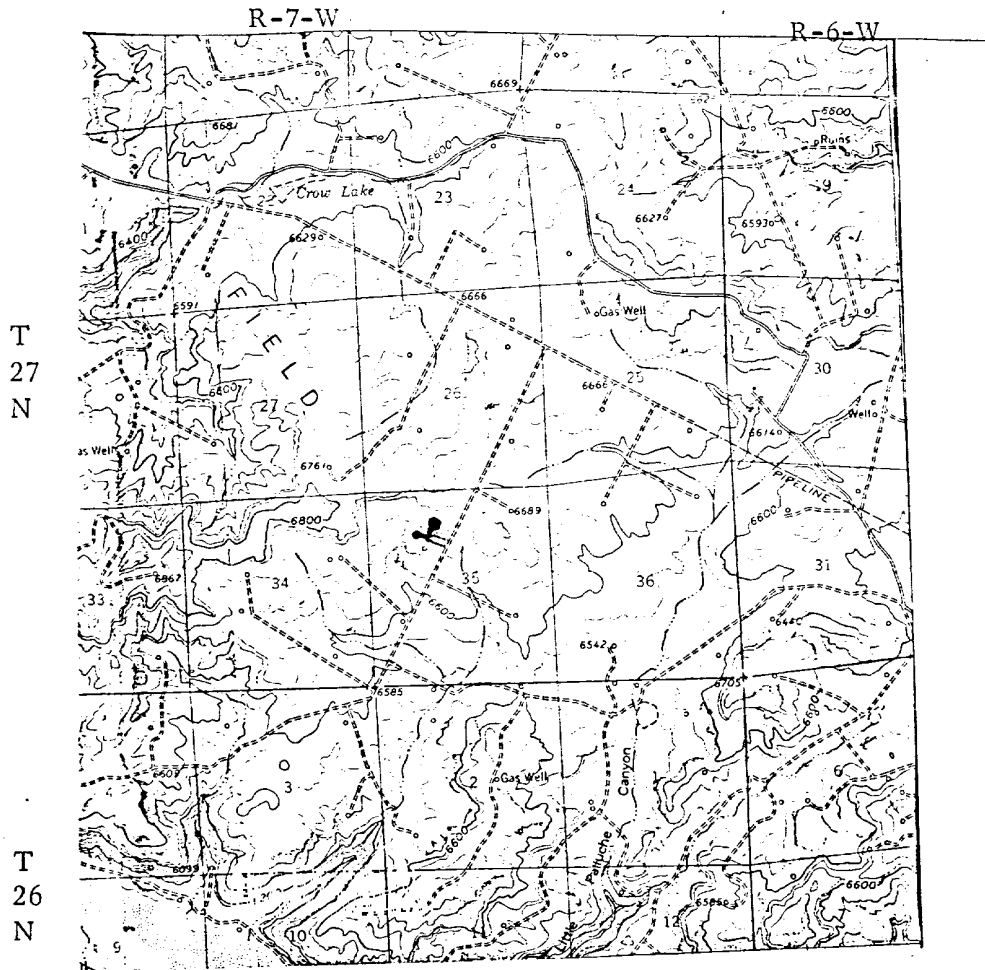
DWG.
NO.

REV

El Paso Natural Gas Company

Rincon #18R

NW 35-27-7



MAP 1

EIVE

OCT 26 1979

U. S. GEOLOGICAL SURVEY
DURANGO, COLO.

LEGEND OF RIGHT-OF-WAYS

EXISTING ROADS

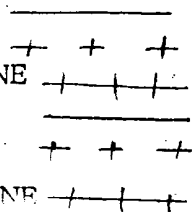
EXISTING PIPELINES

EXISTING ROAD & PIPELINE

PROPOSED ROADS

PROPOSED PIPELINES

PROPOSED ROAD & PIPELINE





ENERGY AND MINERALS DEPARTMENT

OIL CONSERVATION DIVISION
AZTEC DISTRICT OFFICE

November 6, 1979

BRUCE KING
GOVERNOR

LARRY KEHOE
SECRETARY

1800 RIO BRAZOS ROAD
AZTEC, NEW MEXICO 87410
(505) 334-6178

El Paso Natural Gas Co.
P. O. Box 990
Farmington, NM

NWU 3- 874

SUBJECT: NON-STANDARD GAS PRORATION UNIT CONSISTING OF 168.86
ACRES IN THE Wildcat Chacra GAS
POOL DESCRIBED AS FOLLOWS:

TOWNSHIP 27 NORTH, RANGE 7 WEST, NMPM

SECTION: 35

NW/4

By authority granted me by Rule 5 (B) of Order R-1670, as amended, the above-described acreage has been approved as a non-standard gas proration unit to be dedicated to the Rincon Unit

well no. 18R, located 805/N; 1810/W of said

Section 35.

AR Kendrick
Supervisor, District #3

xc: Oil Conservation Division
Santa Fe, New Mexico