

# BURLINGTON RESOURCES

April 23, 2002

New Mexico Oil Conservation Division  
1000 Rio Brazos Road  
Aztec, New Mexico 87410

Re: San Juan 27-5 Unit #59M  
1 Section 6, T-27-N, R-5-W  
30-039-22224

## REVISED

Gentlemen:


Attached is a copy of the allocation for the commingling of the subject well for the Lewis pay add that was completed 7-12-01. DHC-225az was issued for this well.

Gas: Mesaverde 56%  
Dakota 44%

Oil: Mesaverde 74%  
Dakota 26%

These percentages were calculated using rate-time reserve estimate comparisons for each respective formation. Because the Lewis formation was the only formation added during operations, the oil allocation has stayed the same as it was prior to working over the well. Please let me know if you have any questions.

Sincerely,



Peggy Cole  
Regulatory Supervisor

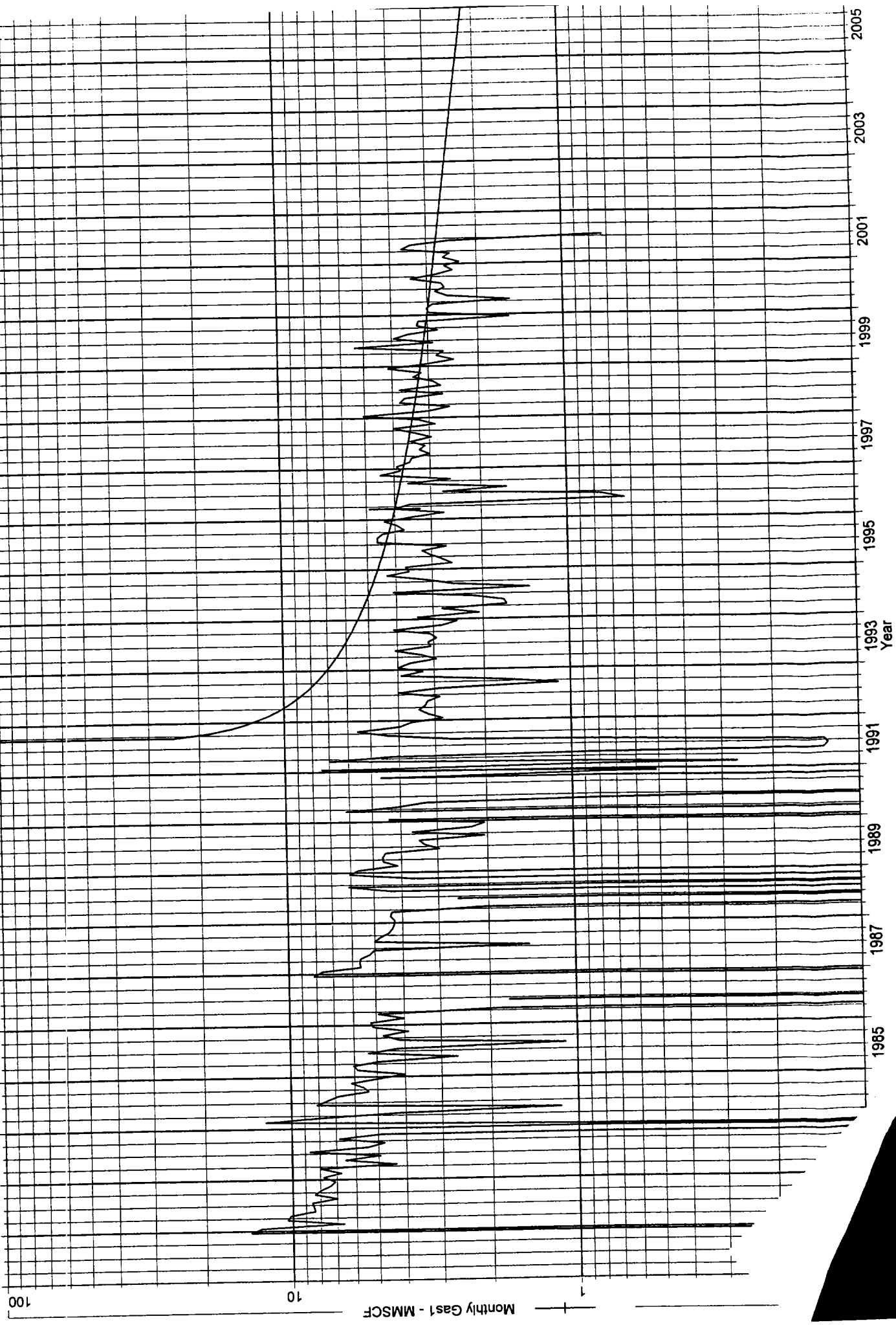
Xc: NMOCD – Santa Fe  
Bureau of Land Management

SAN JUAN 27-5 UNIT 59M DK (31927561932.8991) Data: Jan. 1981-Jul. 2001

Operator: BURLINGTON RESOURCES OG CO LP  
Field: BASIN DAKOTA (PRORATED GAS)  
Zone:  
Type: Gas  
Group: Well::28\_5LW

dk (Rate-Time)  
qi: 4.01775 MMSCF, Mar, 1996  
qf: 0.457023 MMSCF, Oct, 2034  
di(Hyp): 9  
RR: 509.765 MMSCF

Production Cum  
Oil: 0 MST  
Gas: 892.191 MMSC  
Water: 0 MST  
Cond: 0 MST



SAN JUAN 27-5 UNIT 59M ALL (31932334185.1532) Data: May.1999-Mar.2002

Production Curves  
Oil: 0 MSTB  
Gas: 81.36 MMSCF  
Water: 0 MSTB  
Cond: 0 MSTB

all (Rate-Time)  
qi: 11.0793 MMSCF, Sep, 2001  
qf: 0.456776 MMSCF, Oct, 2047  
di(Hyp): 35  
RR: 1153.44 MMSCF

Operator: BURLINGTON RESOURCES OG CO LP  
Field:  
Zone:  
Type: Gas  
Group: Well::28\_5LW

