

UNITED STATES  
DEPARTMENT OF THE INTERIOR  
GEOLOGICAL SURVEY30-039-22370  
5. LEASE DESIGNATION AND SERIAL NO.  
SF 080673

## APPLICATION FOR PERMIT TO DRILL, DEEPEN, OR PLUG BACK

## 1a. TYPE OF WORK

DRILL ☒DEEPEN ☐PLUG BACK ☐

## b. TYPE OF WELL

OIL

WELL ☐

GAS

WELL ☒

OTHER

SINGLE

ZONE ☐

MULTIPLE

ZONE ☒

## 2. NAME OF OPERATOR

El Paso Natural Gas Company

## 3. ADDRESS OF OPERATOR

PO Box 289, Farmington, NM 87401

## 4. LOCATION OF WELL (Report location clearly and in accordance with any State requirements.)

At surface

850'N, 1575'W

At proposed prod. zone

same

## 14. DISTANCE IN MILES AND DIRECTION FROM NEAREST TOWN OR POST OFFICE\*

22 miles southeast of Gobernador, NM

## 15. DISTANCE FROM PROPOSED\*

LOCATION TO NEAREST

PROPERTY OR LEASE LINE, FT.

(Also to nearest drlg. unit line, if any)

850'

## 16. NO. OF ACRES IN LEASE

unit

17. NO. OF ACRES ASSIGNED  
TO THIS WELL160  $\frac{1}{4}$  W/320.00

## 18. DISTANCE FROM PROPOSED LOCATION\*

TO NEAREST WELL, DRILLING, COMPLETED,  
OR APPLIED FOR, ON THIS LEASE, FT.

1600'

## 19. PROPOSED DEPTH

6245'

## 20. ROTARY OR CABLE TOOLS

Rotary

## 21. ELEVATIONS (Show whether DF, RT, GR, etc.)

6771'GL

## 22. APPROX. DATE WORK WILL START\*

## 23.

## PROPOSED CASING AND CEMENTING PROGRAM

SIZE OF HOLE	SIZE OF CASING	WEIGHT PER FOOT	SETTING DEPTH	QUANTITY OF CEMENT
13 3/4"	9 5/8"	36.0#	200'	224 cu.ft. to circulate
8 3/4"	7"	20.0#	3940'	215 cu.ft. to cover Ojo Alamo
6 1/4"	4 1/2" liner	10.5#	3790-6245'	431 cu.ft. to circ. liner

Selectively perforate and sandwater fracture the Pictured Cliffs and Mesa Verde formation.

A 3000 psi WP and 6000 psi test double gate preventer equipped with blind and pipe rams will be used for blow out prevention on this well.

This gas is dedicated.

The W/2 of Section 8 is dedicated to this well.

IN ABOVE SPACE DESCRIBE PROPOSED PROGRAM: If proposal is to deepen or plug back, give data on present productive zone and proposed new productive zone. If proposal is to drill or deepen directionally, give pertinent data on subsurface locations and measured and true vertical depths. Give blowout preventer program, if any.

## 24.

SIGNED

TITLE

Drilling Clerk

DATE

4-22-80

(This space for Federal or State office use)

PERMIT NO.

APPROVAL DATE

APPROVED BY

CONDITIONS OF APPROVAL, IF ANY:

TITLE

DATE

DRILLING OPERATIONS AUTHORIZED ARE  
SUBJECT TO COMPLIANCE WITH ATTACHED  
GENERAL REQUIREMENTS

\*See Instructions On Reverse Side

All distances must be from the outer boundaries of the Section.

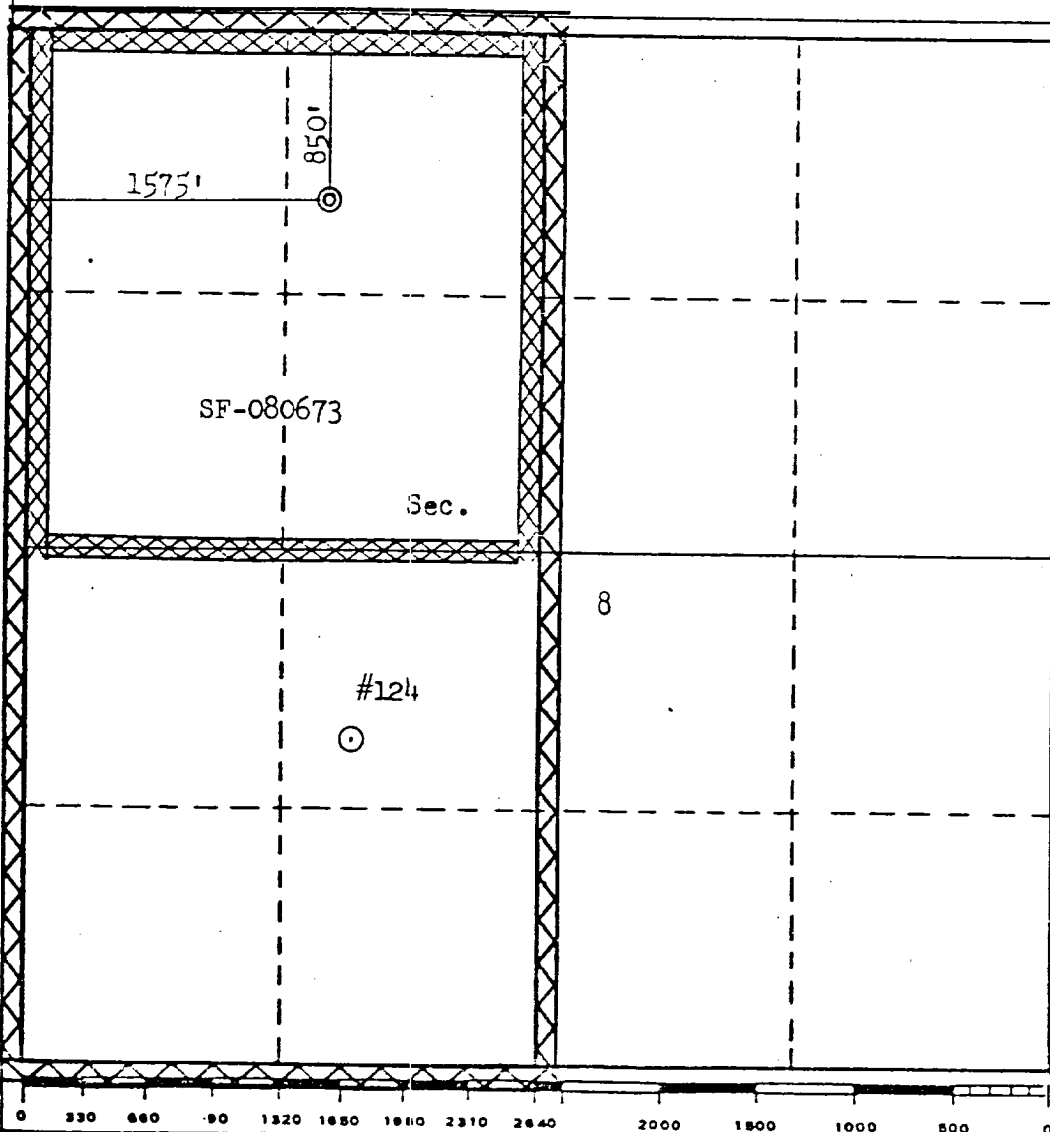
Operator EL PASO NATURAL GAS COMPANY			Lease SAN JUAN 27-4 UNIT (SF-080673)		Well No. 124-A
Unit Letter C	Section 8	Township 27N	Range 4W	County Rio Arriba	
Actual Footage Location of Well: 850 feet from the North line and 1575 feet from the West line					
Ground Level Elev. 6771	Producing Formation Pictured Mesa Verde - Cliffs		Pool Tapacito Pictured Cliffs Blanco Mesa Verde		Dedicated Acreage: 160.00 & 320.00 Acres

1. Outline the acreage dedicated to the subject well by colored pencil or hachure marks on the plat below.
2. If more than one lease is dedicated to the well, outline each and identify the ownership thereof (both as to working interest and royalty).
3. If more than one lease of different ownership is dedicated to the well, have the interests of all owners been consolidated by communitization, unitization, force-pooling, etc?

☒ Yes ☐ No If answer is "yes," type of consolidation Unitization

If answer is "no," list the owners and tract descriptions which have actually been consolidated. (Use reverse side of this form if necessary.)

No allowable will be assigned to the well until all interests have been consolidated (by communitization, unitization, forced-pooling, or otherwise) or until a non-standard unit, eliminating such interests, has been approved by the Commission.



CERTIFICATION

I hereby certify that the information contained herein is true and complete to the best of my knowledge and belief.

*Regan Bradfield*

Name  
Drilling Clerk  
Position  
El Paso Natural Gas Co.

Company  
April 22, 1980  
Date

Date

I hereby certify that the well location shown on this plat was taken from field notes of actual surveys made by me or under my supervision and that the same is true and correct to the best of my knowledge and belief.

Date Surveyed  
October 1, 1980  
Registered Professional Engineer  
and/or Land Surveyor

*Frederick J. ...*  
Certificate No.

3950

**El Paso** NATURAL GAS  
COMPANY

P.O. BOX 1000  
FARMINGTON, NEW MEXICO 87401  
PHONE 545-0500

Well Name San Juan 27-4 Unit # 124A  
Location NW 8 27-4  
Formation PC - M ✓

We, the undersigned, have inspected this location and road.

Henry Bill

U. S. Forest Service

3/26/80

Date

Bob J. Naylor

Archaeologist

3/26/80

Date

Bureau of Indian Affairs Representative

Date

Bureau of Land Management Representative

Date

John T. Keller  
U. S. Geological Survey Representative

3/26/80

Date

Seed Mixture: Seed mixture # 4

Equipment Color: Same as before

Road and Row: (Same) or (Separate)

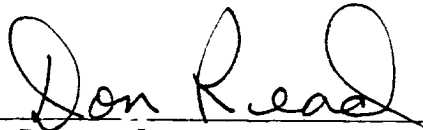
Remarks: \_\_\_\_\_  
\_\_\_\_\_  
\_\_\_\_\_

C.C. to Dave Vilvin  
Earl Mealer

Multi-Point Surface Use Plan  
San Juan 27-4 Unit #124A

1. Existing Road - Please refer to Map No. 1 which shows the existing roads. New roads which will be required have been marked on this map. All existing and new roads will be properly maintained during the duration of this project.
2. Planned Access Roads - Please refer to Map No. 1. The grade of the access roads will be consistent with that of the local terrain. The road surface will not exceed twenty feet (20') in width. Upon completion of the project, the access road will be adequately drained to control soil erosion. Drainage facilities may include ditches, water bars, culverts or any other measure deemed necessary by trained Company personnel to insure proper drainage. Gates and/or cattleguards will be installed if necessary.
3. Location of Existing Wells - Please refer to Map No. 2.
4. Location of Tank Batteries, Production Facilities, and Production Gathering and Service Lines - Please refer to Maps No. 1 and No. 2. Map No. 2 shows the existing gas gathering lines. Map No. 1 shows the existing roads and new proposed access roads. All known production facilities are shown on these two maps.
5. Location and Type of Water Supply - Water for the proposed project will be obtained from 44 Crossing Water Hole.
6. Source of Construction Materials - No additional materials will be required to build either the access road or the proposed location.
7. Methods of Handling Waste Materials - All garbage and trash materials will be put into a burn pit shown on the attached Location Plat No. 1. When clean-up operations are begun on the proposed project, the burn pit with its refuse will be buried to a depth of at least three feet (3'). A latrine, the location of which is also shown on Plat No. 1,

7. cont'd. will be provided for human waste. If large amounts of liquids are left in the reserve pit after completion of the project, the pit will be fenced until the liquids have had adequate time to dry. The location clean-up will not take place until such time as the reserve pit can be properly covered over to prevent run-off from carrying any of these materials into the watershed. No earthen pit will be located on natural drainages; all earthen pits will be so constructed as to prevent leakage from occurring.
8. Ancillary Facilities - No camps or airstrips will be associated with this project.
9. Wellsite Layout - Please refer to the attached Plat No. 1.
10. Plans for Restoration of the Surface - After completion of the proposed project, the location will be cleaned and leveled. The location will be left in such a condition that will enable reseeding operations to be carried out. Seed mixture as designated by the responsible government agency will be used. The reseeding operation will be performed during the time period set forth by the regulatory body. The location production equipment will be painted as designated by the responsible government agency.
11. Other Information - The terrain is rolling hills with pinon, sage and juniper growing. Cattle and deer are occasionally seen on the proposed project site.
12. Operator's Representative - W.D. Dawson, PO Box 990, Farmington, NM
13. Certification - I hereby certify that I, or persons under my direct supervision, have inspected the proposed drillsite and access route; that I am familiar with the conditions which presently exist; that the statements made in this plan are, to the best of my knowledge, true and correct; and that the work associated with the operations proposed herein will be performed by El Paso Natural Gas Company and its contractors and sub-contractors in conformity with this plan and the terms and conditions under which it is approved.



D. R. Read  
Project Drilling Engineer

Operations Plan  
San Juan 27-4 Unit #124A

I. Location: 850'N, 1575'W, Section 8, T-27-N, R-4-W, Rio Arriba County, NM

Field: Tapacito PC & Blanco MV

Elevation: 6771'GR

II. Geology:

A. Formation Tops:	Surface	San Jose	Lewis	3740'
	Ojo Alamo	3090'	Mesa Verde	5313'
	Kirtland	3200'	Menefee	5464'
	Fruitland	3445'	Point Lookout	5796'
	Pic.Cliffs	3640'	Total Depth	6245'

B. Logging Program: I-ES and GR-Density at 3940'.  
GR-Ind. and GR-Density at Total Depth.

C. Coring Program: none

D. Natural Gauges: 5303', 5454', 5786' and at Total Depth.  
Also gauge any noticeable increase in gas. Record all gauges in daily drilling report and on morning report.

III. Drilling:

A. Mud Program: mud from surface to 3940'. Gas from intermediate casing to Total Depth.

IV. Materials:

A. Casing Program:	<u>Hole Size</u>	<u>Depth</u>	<u>Casing Size</u>	<u>Wt.&amp;Grade</u>
	13 3/4"	200'	9 5/8"	36.0 K-55
	8 3/4"	3940'	7"	20.0# K-55
	6 1/4"	3790-6245'	4 1/2"	10.5# K-55

B. Float Equipment: 9 5/8" surface casing - cement guide shoe.

7" intermediate casing - cement guide shoe and self-fill insert float valve, 5 stabilizers every other joint above shoe. Run float two joints above shoe.

4 1/2" liner - 4 1/2" liner hanger with neoprene packoff & PBR. Geyser shoe and plug latch-in collar assembly.

C. Tubing: 6245' of 2 3/8", 4.7#, J-55 8rd EUE tubing with a common pump seating nipple one joint above bottom. Tubing will be open ended.  
3790' of 1 1/4", 2.33#, J-55 IJ tubing with a common pump seating nipple above a perforated joint plugged on bottom. Isolate producing formations with a packer.

D. Wellhead Equipment: 10" 2000 x 9 5/8" casing head. 10" 2000 x 6" 2000 dual xmas tree.

Operations Plan - San Juan 27-4 Unit #124A

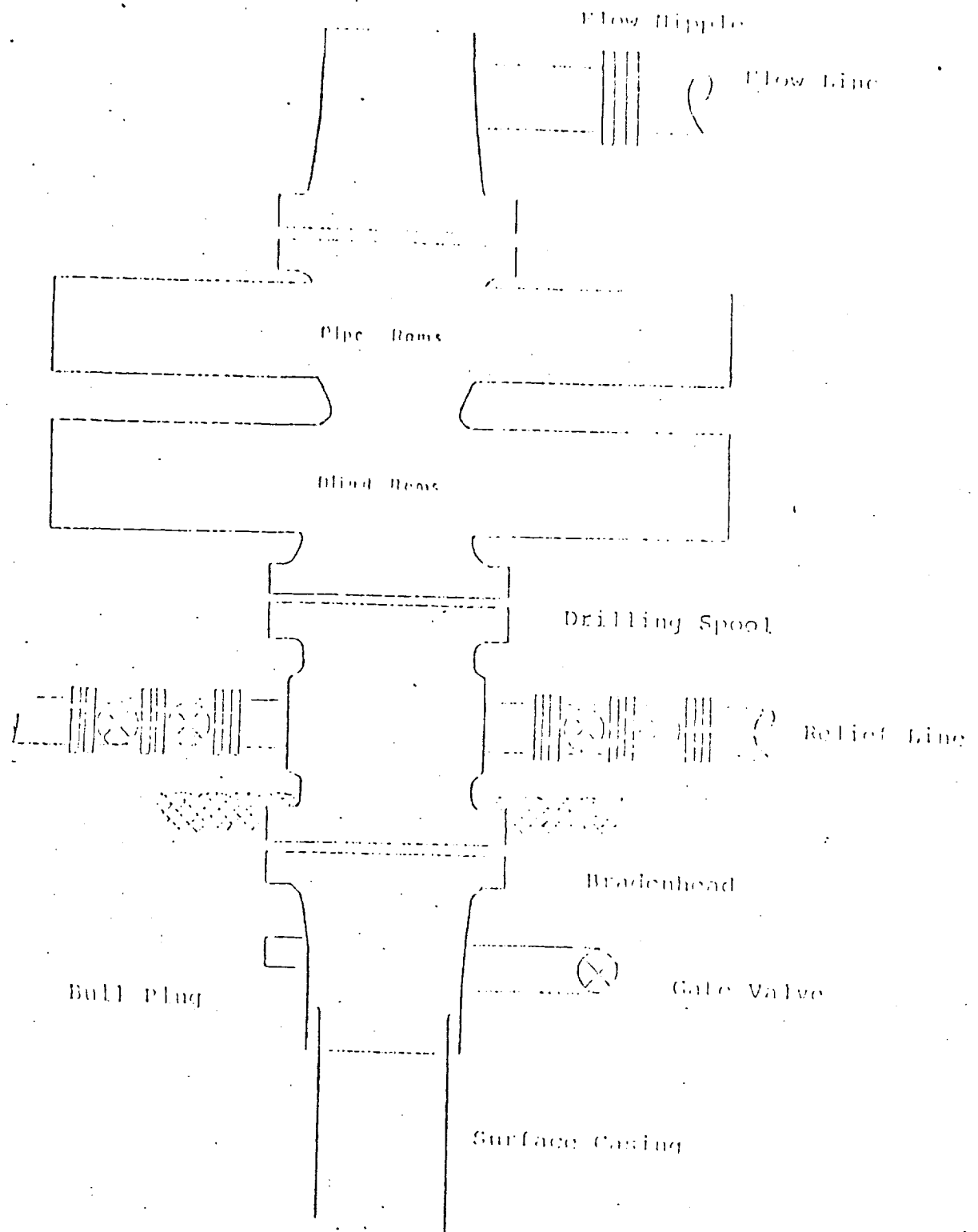
V. Cementing:

9 5/8" surface casing - use 190 sks. of Class "B" cement with 1/4# gel-flake per sack and 3% calcium chloride (224 cu.ft. of slurry, 100% excess to circulate to surface). WOC 12 hours. Test casing to 600#/30 minutes.

7" intermediate casing - use 60 sks. of 65/35 Class "B" Poz with 6% gel and 2% calcium chloride (8.3 gallons of water per sack) followed by 100 sks. of Class "B" with 2% calcium chloride (215 cu.ft. of slurry, 50% excess to cover Ojo Alamo). Run temperature survey at 8 hours. WOC 12 hours. Test casing to 1200#/30 minutes.

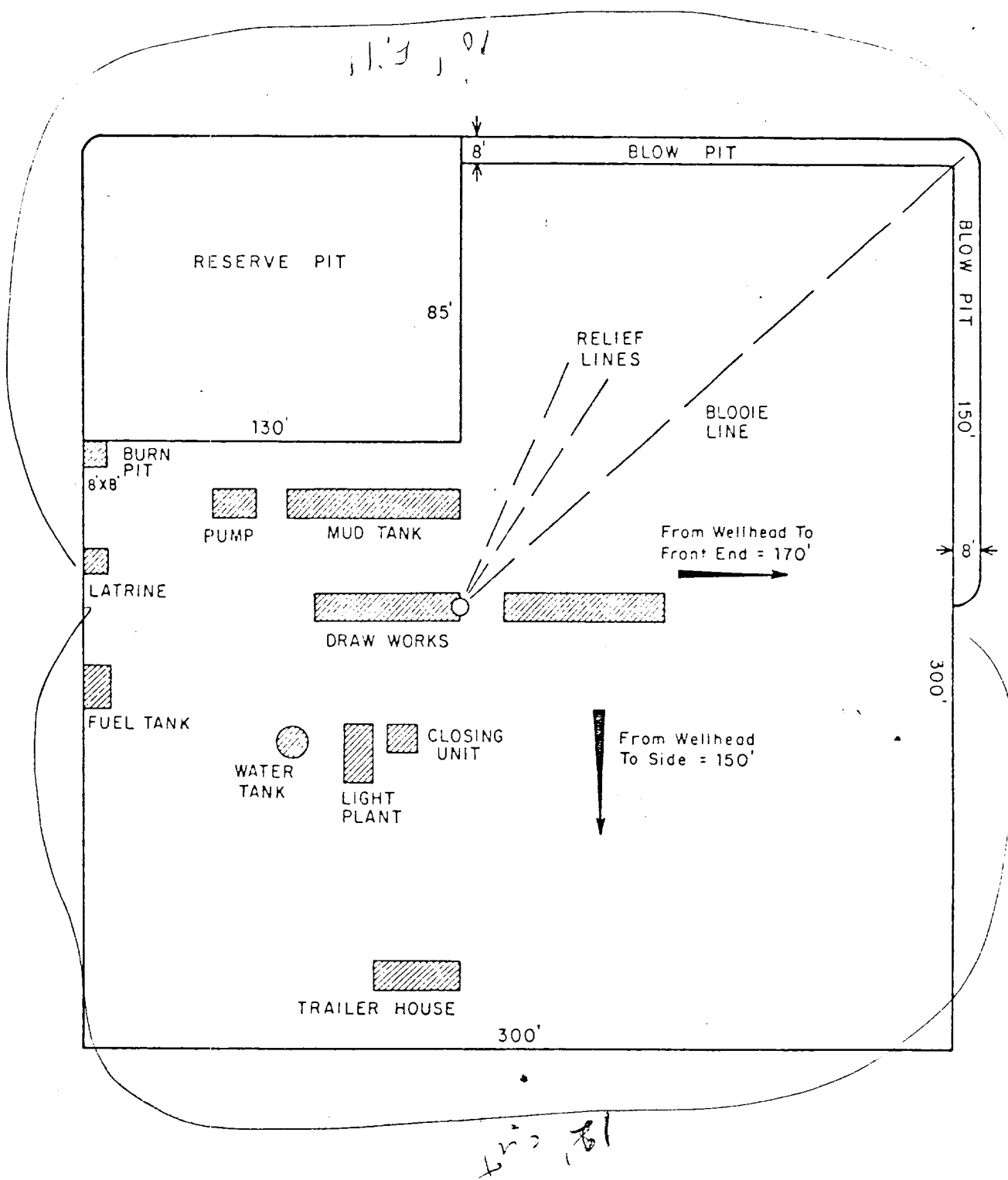
4 1/2" liner - precede cement with 20 barrels of gel water (2 sks. gel) Cement with 310 sks. of 50/50 Class "B" Poz with 2% gel, 0.6% Halad-9, 6.25# gilsonite plus 1/4# Flocele per sack (431 cu.ft. of slurry, 70% excess to circulate liner). WOC 18 hours.

Typical R.O.P. Installation  
For Mega Verde Well




Series 900 Double Gate ROP, rated  
at 3000 psi Working Pressure  
When gas drilling operations begin a Shaffer type 50  
or equivalent rotating head is installed on top of the  
flow nipple and the flow line is converted into a blowie line





			ENG. REC.	DATE
			DRAWN	J.L.H. 8-16-78
			CHECKED	
			CHECKED	
			PROJ. APP.	
PRT.	SEP.	DATE	TO	W.O.
PRINT RECORD				



**El Paso Natural Gas Company**

TYPICAL LOCATION PLAT FOR  
MESAVERDE OR DAKOTA DRILL SITE

SCALE: 1" = 50'

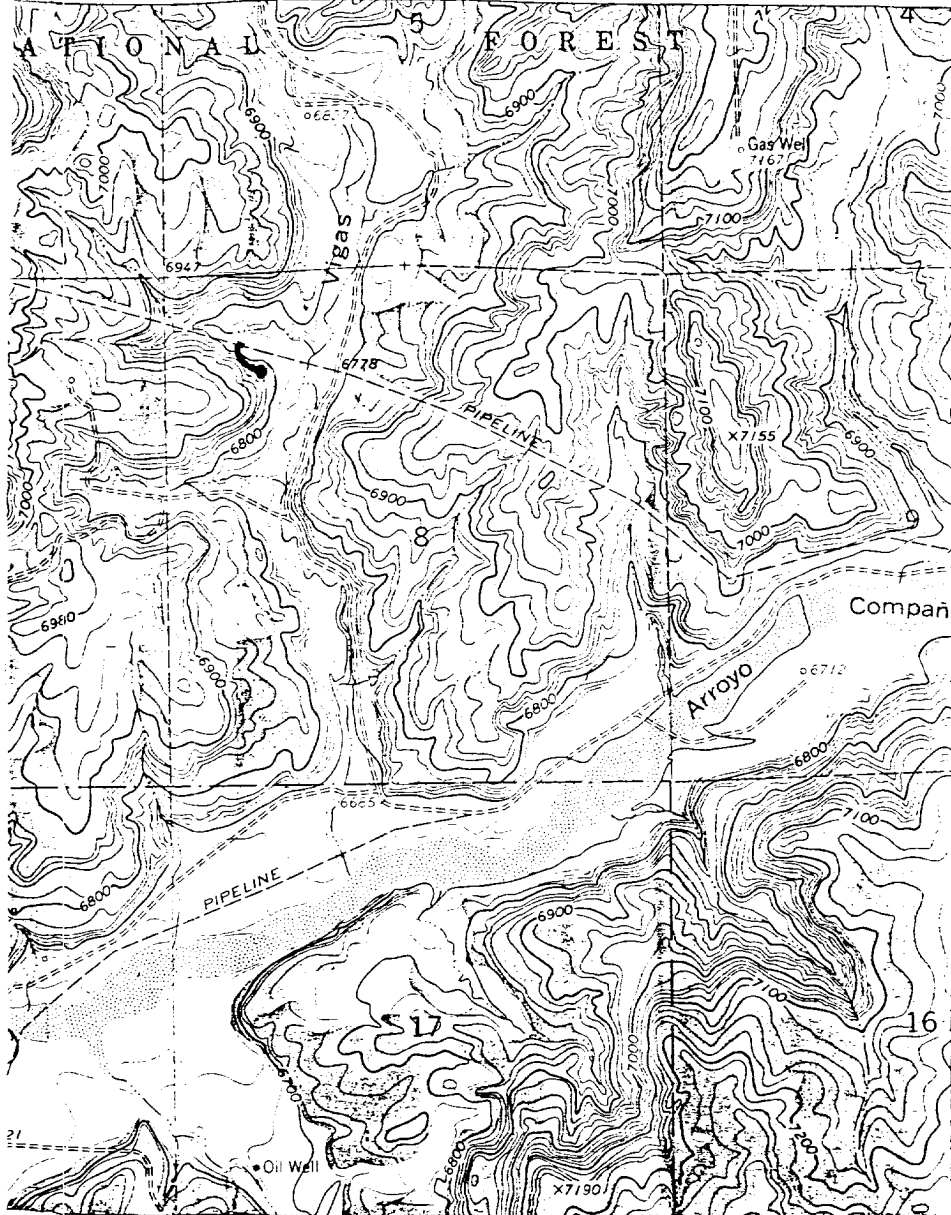
DWG.

REV

El Paso Natural Gas Company  
San Juan 27-4 Unit #124A  
NW 8-27-4

R-4-W

T  
27  
N



MAP 1

LEGEND OF RIGHT-OF-WAYS

EXISTING ROADS	— — — — —
EXISTING PIPELINES	+ + +
EXISTING ROAD & PIPELINE	+ + +
PROPOSED ROADS	— — — — —
PROPOSED PIPELINES	+ + +
PROPOSED ROAD & PIPELINE	+ + +

R-4-W



Proposed Location