

UNITED STATES
DEPARTMENT OF THE INTERIOR
GEOLOGICAL SURVEY30-039-22593
5. LEASE DESIGNATION AND SERIAL NO.

Contract 237

6. IF OTHER, ADDRESS OR FIELD NAME

Jicarilla Apache

7. TITLE AGREEMENT NAME

East
Puerto Chiquito Manco

8. FARM OR LEASE NAME

9. WELL NO.

41 (P-20)

10. FIELD AND POOL, OR WILDCAT

East
Puerto Chiquito Manco11. SEC., T., R., M., OR S.E.C.
AND SURVEY OR AREA

Sec. 20, T-27N, R-1E

12. COUNTY OR PARISH 13. STATE

Rio Arriba

NM

17. NO. OF ACRES ASSIGNED
TO THIS WELL

160

20. ROTARY OR CABLE TOOLS

Rotary

22. APPROX. DATE WORK WILL START*

as soon as approved

APPLICATION FOR PERMIT TO DRILL, DEEPEN, OR PLUG BACK

1a. TYPE OF WORK

DRILL ☒DEEPEN ☐PLUG BACK ☐

b. TYPE OF WELL

OIL
WELL ☒GAS
WELL ☐

OTHER

SINGLE
ZONE ☐MULTIPLE
ZONE ☐

2. NAME OF OPERATOR

Benson-Montin-Greer Drilling Corp.

3. ADDRESS OF OPERATOR

221 Petroleum Center Building, Farmington, NM 87401

4. LOCATION OF WELL (Report location clearly and in accordance with any State requirements.*)

At surface

1900' FNL, 2008' FWL, Sec. 20, T-27N, R-1E

At proposed prod. zone
same

14. DISTANCE IN MILES AND DIRECTION FROM NEAREST TOWN OR POST OFFICE*

10 north of Llaves, New Mexico

15. DISTANCE FROM PROPOSED*

LOCATION TO NEAREST
PROPERTY OR LEASE LINE, FT.
(Also to nearest drilg. unit line, if any)

16. NO. OF ACRES IN LEASE

18. DISTANCE FROM PROPOSED LOCATION*
TO NEAREST WELL, DRILLING COMPLETED,
OR APPLIED FOR, ON THIS LEASE, FT.

19. PROPOSED DEPTH

4050'

20. ROTARY OR CABLE TOOLS

21. ELEVATIONS (Show whether DF, RT, GR, etc.)

6998' GR

23.

PROPOSED CASING AND CEMENTING PROGRAM

SIZE OF HOLE	SIZE OF CASING	WEIGHT PER FOOT	SETTING DEPTH	QUANTITY OF CEMENT
15"	10 3/4"	40.5#	100'	100 sacks, circulated
8 3/4"	7"	23.0#	2700'	300 sacks
6 1/4"	4 1/2" (liner)	10.5#	2550'-4050'	150 sacks

COPIES ARE
ATTACHED

The producing section will be sand-oil fractured.



IN ABOVE SPACE DESCRIBE PROPOSED PROGRAM: If proposal is to deepen or plug back, give data on present productive zone and proposed new productive zone. If proposal is to drill or deepen directionally, give pertinent data on subsurface locations and measured and true vertical depths. Give blowout preventer program, if any.

24.

SIGNED

(This space for Federal or State office use)

TITLE

Vice-President

DATE Nov. 4, 1980

PERMIT NO.

APPROVAL DATE

APPROVED BY

TITLE

DATE

CONDITIONS OF APPROVAL, IF ANY:

**NEW MEXICO OIL CONSERVATION COMMISSION
WELL LOCATION AND ACREAGE DEDICATION PLAT**

Form C-102
Supersedes C-128
Effective 1-1-65

All distances must be from the outer boundaries of the Section.

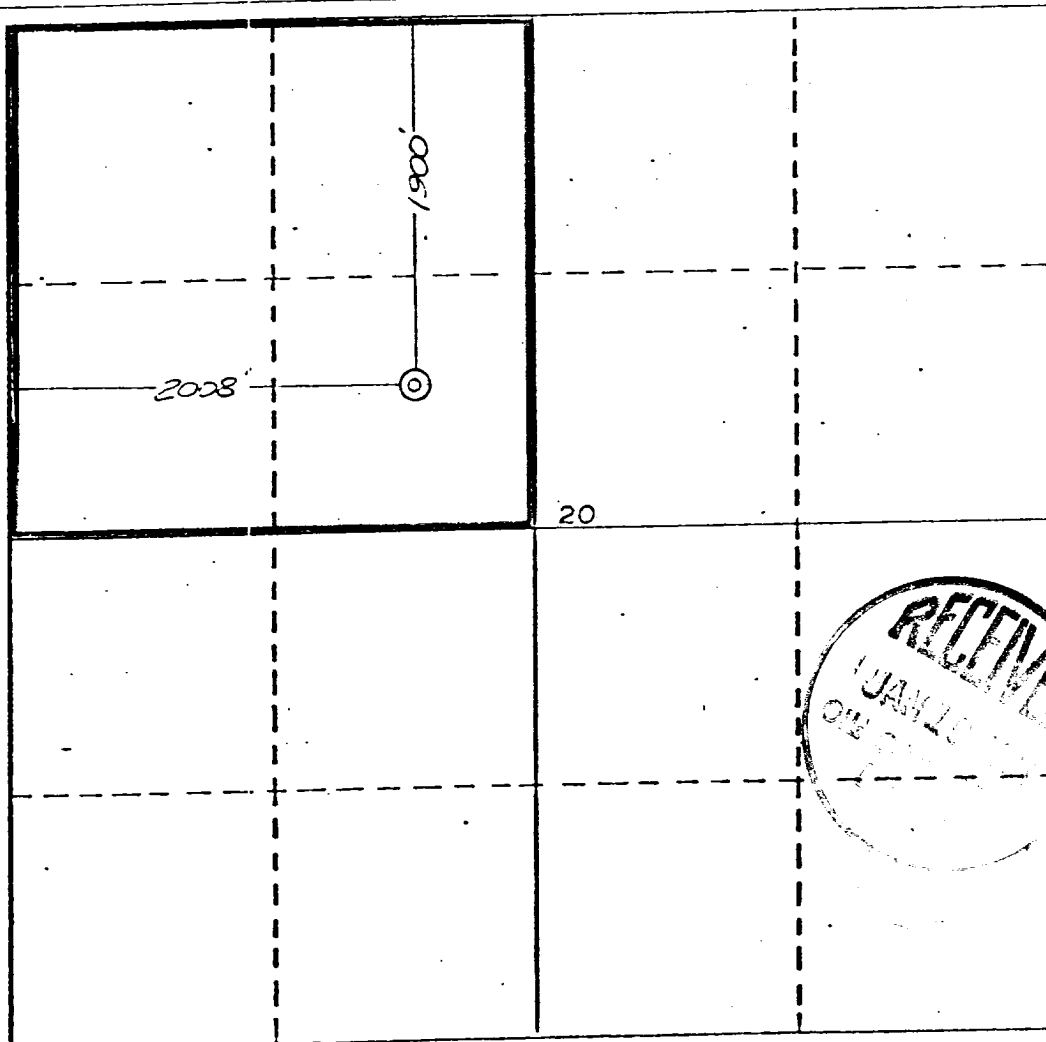
Operator BENSON-MONTIN-GREER DRG. CORP.			Lease 237		Well No. 41 (F-20)
Unit Letter F	Section 20	Township 27 NORTH	Range 1 EAST	County RIO ARriba	
Actual Well Location of Well:					
1900 feet from the NORTH line and		2008 feet from the WEST line			
Ground Level Elev. 6998	Producing Formation Niobrara	Foot East Puerto Chiquito Mancos		Dedicated Acreage: 160.00 Acres	

1. Outline the acreage dedicated to the subject well by colored pencil or hatchure marks on the plat below.
2. If more than one lease is dedicated to the well, outline each and identify the ownership thereof (both as to working interest and royalty).
3. If more than one lease of different ownership is dedicated to the well, have the interests of all owners been consolidated by communitization, unitization, force-pooling, etc?

☐ Yes ☐ No If answer is "yes," type of consolidation _____

If answer is "no," list the owners and tract descriptions which have actually been consolidated. (Use reverse side of this form if necessary.) _____

No allowable will be assigned to the well until all interests have been consolidated (by communitization, unitization, forced-pooling, or otherwise) or until a non-standard unit, eliminating such interests, has been approved by the Commission.



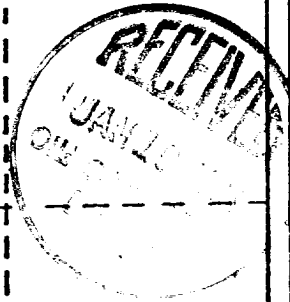
CERTIFICATION

I hereby certify that the information contained herein is true and complete to the best of my knowledge and belief.

Name **Virgil L. Stoabs**
 Position **Vice-President**
 Company **Benson-Montin-Greer Drilling Corp.**
 Date **November 7, 1980**

I hereby certify that the well location shown on this plat was plotted from field notes of actual surveys made by me or under my supervision and that the same is true and correct to the best of my knowledge and belief.

Date Surveyed **October 20, 1980**
 Registered Professional Engineer and/or Land Surveyor
James P. Leese
 Certificate No. **1463**



UNITED STATES
DEPARTMENT OF THE INTERIOR
GEOLOGICAL SURVEY

SUBMIT IN TRIPLICATE*
(Other instructions on reverse side)

Form approved
Budget Bureau No. 42 R1424
5. LEASE DESIGNATION AND SERIAL NO.

Contract 237

6. IF INDIAN, ALLOTTEE OR TRIBE NAME

Jicarilla Apache

7. UNIT AGREEMENT NAME East
Puerto Chiquito Mancos

8. FARM OR LEASE NAME

9. WELL NO.

41 (F-20)

10. FIELD AND POOL, OR WILDCAT East
Puerto Chiquito Mancos

11. SEC., T., R., M., OR BLK. AND
SURVEY OR AREA

Sec. 20, T-27N, R-1E

12. COUNTY OR PARISH 13. STATE

Rio Arriba New Mexico

SUNDRY NOTICES AND REPORTS ON WELLS
(Do not use this form for proposals to drill or to deepen or plug back to a different reservoir.
Use "APPLICATION FOR PERMIT—" for such proposals.)

1. OIL WELL ☒ GAS WELL ☐ OTHER

2. NAME OF OPERATOR
Benson-Montin-Greer Drilling Corp.

3. ADDRESS OF OPERATOR
221 Petroleum Center Building, Farmington, NM 87401

4. LOCATION OF WELL (Report location clearly and in accordance with any State requirements.*
See also space 17 below.)
At surface

1900' FNL, 2008' FWL, Sec. 20, T-27N, R-1E

14. PERMIT NO.

15. ELEVATIONS (Show whether DF, RT, GR, etc.)

6998' GR

16. Check Appropriate Box To Indicate Nature of Notice, Report, or Other Data

NOTICE OF INTENTION TO:

TEST WATER SHUT-OFF

FRACTURE TREAT

SHOOT OR ACIDIZE

REPAIR WELL

(Other)

PULL OR ALTER CASING

MULTIPLE COMPLETE

ABANDON*

CHANGE PLANS

X

SUBSEQUENT REPORT OF:

WATER SHUT-OFF

FRACTURE TREATMENT

SHOOTING OR ACIDIZING

(Other)

REPAIRING WELL

ALTERING CASING

ABANDONMENT*

(NOTE: Report results of multiple completion on Well
Completion or Recompletion Report and Log form.)

17. DESCRIBE PROPOSED OR COMPLETED OPERATIONS (Clearly state all pertinent details, and give pertinent dates, including estimated date of starting any proposed work. If well is directionally drilled, give subsurface locations and measured and true vertical depths for all markers and zones pertinent to this work.)*

Proposed Total Depth changed to 3600' (Base of Gallup formation).

Operating rights to this depth assigned to Benson-Montin-Greer by
assignment dated October 1, 1963.

18. I hereby certify that the foregoing is true and correct

SIGNED

TITLE

Vice-President

DATE Dec. 11, 1980

(This space for Federal or State office use)

APPROVED
AS AMENDED

APPROVED BY

TITLE

DATE

CONDITIONS OF APPROVAL, IF ANY

JAN 16 1981
JAMES F. SIMS
DISTRICT ENGINEER

*See Instructions on Reverse Side

NTL-6 ENVIRONMENTAL PROTECTION STATEMENT

Operator: Benson-Montin-Greer Drilling Corp.
Well No. and Lease: East Puerto Chiquito Mancos Unit #41 (F-20)
Location: SE/4 NW/4 Section 20, T-27N, R-1E
County and State: Rio Arriba County, New Mexico
Date: November 7, 1980

TO: District Engineer, U. S. Geological Survey, Bureau of Land
Management and/or U. S. Forest Service

I. General

The following information is provided in order that the environmental impact of proposed operations on subject leasehold may be evaluated. Oil and gas operations by this operator will be totally systemized between management and operations personnel to ameliorate and minimize any adverse effect on the environment. Operator plans to conduct operations in such a fashion that will:

- (A) Result in diligent development and efficient resource recovery.
- (B) Afford adequate safeguard for the environment.
- (C) Result in proper rehabilitation of disturbed land.
- (D) Assure protection of public health and safety.
- (E) Conform with best available oil field practice.

II. Drilling Operations

A. Preliminary Environmental Review

Request for permission to stake well location and submission of topo map has been done previously.

B. Application for Permit to Drill, Deepen, or Plug Back

- (1) Form 9-331C (Application for Permit to Drill, Deepen, or Plug Back) is attached.

- (2) Multi-Point Surface Use and Operations Plan is attached.
- (3) If private surface is involved, Rehabilitation Agreement is attached (see Exhibit I-A).
- (4) Form 9-331C
 1. Location - see 9-331C
 2. Elevation gl - see 9-331C
 3. Geologic name of surface formation - see 9-331C
 4. Type drilling tools - see 9-331C
 5. Proposed TD - see 9-331C
 6. Estimated tops of important geologic markers - see Exhibit I
 7. Estimated depth anticipated water, oil, gas, or other mineral bearing form - see Exhibit II
 8. Proposed casing program (size, grade, wgt., N or U) - see 9-331C
 9. Proposed setting depth each string (amt., type cmt. and additives) - see 9-331C
 10. Operator's planned minimum specs for pressure control equipment, schematic, sizes and pressure ratings (API series), testing procedures and frequency - see Exhibit III
 11. Type and characteristics of circulating medium (quantities and types of mud and weighting material to be maintained) - see Exhibit IV
 12. Testing, logging, and coring program w/provision for flexibility, auxiliary equipment- see Exhibit V
 13. Any anticipated abnormal pressures, temperatures, or hazardous gases (H_2S), and mitigating plans if necessary - see Exhibit VI
 14. Anticipated starting date and duration of operation - see Exhibit VII
 15. Extraneous facets of proposed operation - see Exhibit VIII
- (5) Provide copy of approved Application for Permit to Drill at wellsite - see dog house wall.

Benson-Montin-Greer Drilling Corp.
East Puerto Chiquito Mancos Unit #41 (F-20)
SE/4 NW/4 Section 20, T-27N, R-1E
Rio Arriba County, New Mexico

EXHIBIT I
(TO ACCOMPANY FORM 9-331C)

(4-6) Estimated tops of important geologic markers:

Lewis Shale	<u>surface</u>
Mesa Verde	<u>1258'</u>
Point Lookout	<u>1498'</u>
Mancos	<u>1703'</u>
Niobrara	<u>2613'</u>
Niobrara Zone A	<u>2828'</u>
Niobrara Zone B	<u>2868'</u>
Niobrara Zone C	<u>2938'</u>
Sanostee	<u>3308'</u>
Greenhorn	<u>3608'</u>
Graneros	<u>3673'</u>
Dakota	<u>3863'</u>
TD	<u>4040'</u>

Benson-Montin-Greer Drilling Corp.
East Puerto Chiquito Mancos Unit #41 (F-20)
SE/4 NW/4 Section 20, T-27N, R-1E
Rio Arriba County, New Mexico

EXHIBIT II
(TO ACCOMPANY FORM 9-331C)

(4-7) Estimated depths anticipated water, oil, gas or other mineral bearing formations:

Niobrara (oil & gas)	<u>2613'</u>
Graneros (possible oil & gas)	<u>3673'</u>
Dakota (possible oil & gas)	<u>3863'</u>

Benson-Montin-Greer Drilling Corp.
East Puerto Chiquito Mancos Unit #41 (F-20)
SE/4 NW/4 Section 20, T-27N, R-1E
Rio Arriba County, New Mexico

EXHIBIT III
(TO ACCOMPANY FORM 9-331C)

(4-10) Planned pressure control, planned testing, frequency and procedures:

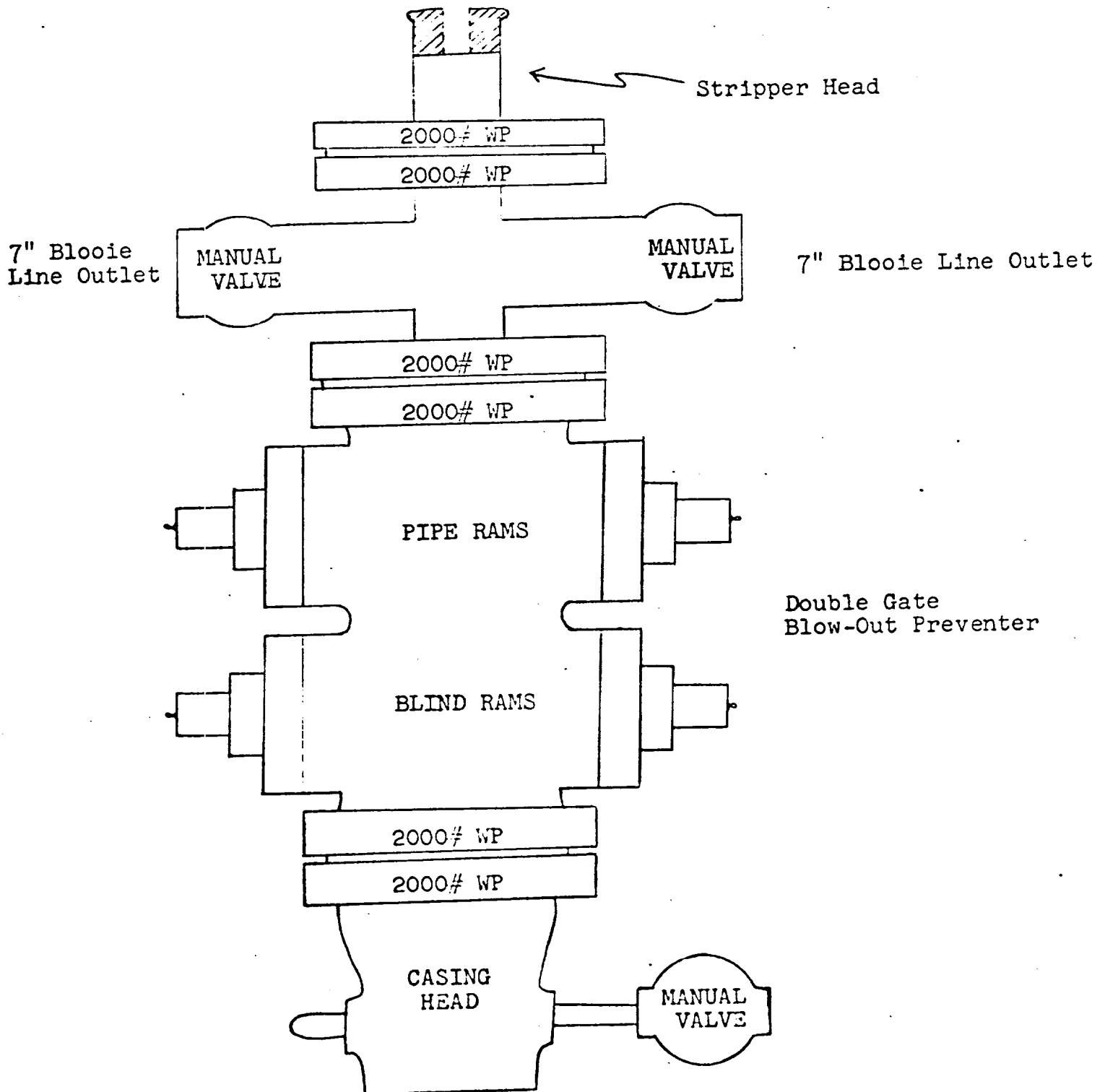
Testing procedure of pressure control equipment and frequency will be conducted in accordance with approved API procedures and/or best oil field practice in area concerned.

- (a) Visual inspection will be made of its equipment before installation.
- (b) After installation, equipment will be tested at manufacturer's rated, equipment pressure, or at least to 1000 psig.
- (c) Pressure control equipment will be operationally tested each trip for bit, but not more than once per day.

Benson-Montin-Greer Drilling Corp.
East Puerto Chiquito Mancos Unit #41 (F-20)
SE/4 NW/4 Section 20, T-27N, R-1E
Rio Arriba County, New Mexico

EXHIBIT III

SCHEMATIC DRAWING OF BLOW-OUT PREVENTER STACK



Benson-Montin-Greer Drilling Corp.
East Puerto Chiquito Mancos Unit #41 (F-20)
SE/4 NW/4 Section 20, T-27N, R-1E
Rio Arriba County, New Mexico

EXHIBIT IV
(TO ACCOMPANY FORM 9-331C)

(4-11) Planned types and characteristics of circulating medium:

<u>Depth</u>	<u>Mud Weight</u>	<u>Viscosity</u>
0-90'	8.5 - 9.0	30 - 40

Spud with fresh water gel slurry. Adjust viscosity as needed to keep hole clean and remove cuttings.

Base of surface to intermediate seating depth:

Operator proposes to drill this footage with compressed air and air mist as circulating medium. Air volume will be adequate to keep hole clean and remove cuttings. In event water is encountered, air mist circulating medium will be used.

Base of surface to TD:

Operator proposes to drill this footage with compressed air as circulating medium.

Benson-Montin-Greer Drilling Corp.
East Puerto Chiquito Mancos Unit #41 (F-20)
SE/4 NW/4 Section 20, T-27N, R-1E
Rio Arriba County, New Mexico

EXHIBIT V
(TO ACCOMPANY FORM 9-331C)

(4-12) Planned testing, logging, and coring program (with provision for flexibility):

DST's planned: None

Cores planned: None

Logs planned: Suitable Resistivity, Reciprocal Conductivity, and SP log in fluid filled hole; Gamma Ray Induction if hole dry.

Suitable porosity log if tools available,
GR Comp. Den. and/or Comp. Neut with caliper.

All logs in API units.

If circumstances arise, will consider a selected DST and/or core if additional reservoir information desired.

(4-12) Auxiliary Equipment:

1. Kelly Cock
2. Float at the bit
3. Visual monitoring of the mud system while in use drilling surface hole.
4. Full opening stabbing valve on derrick floor at all times.

Benson-Montin-Greer Drilling Corp.
East Puerto Chiquito Mancos Unit #41 (F-20)
SE/4 NW/4 Section 20, T-27N, R-1E
Rio Arriba County, New Mexico

EXHIBIT VI
(TO ACCOMPANY FORM 9-331C)

(4-13) Anticipated abnormal pressures, temperatures, or hazardous gases (H_2S):

(a) Anticipated abnormal pressures: None

(b) Anticipated abnormal temperatures: None

(c) Anticipated hazardous gases (H_2S): None

If any of the foregoing are unexpectedly encountered, suitable steps will be taken to mitigate.

Benson-Montin-Greer Drilling Corp,
East Puerto Chiquito Mancos Unit #41 (F-20)
SE/4 NW/4 Section 20, T-27N, R-1E
Rio Arriba County, New Mexico

EXHIBIT VII
(TO ACCOMPANY FORM 9-331C)

- (4-14) Anticipated starting date and duration of operation:
- (a) Anticipated starting date: as soon as approved.
 - (b) Duration of operation: 30 days.
 - (c) Depending on weather and rig availability, will either complete well with the drilling rig on the hole or in the logistical alternative, subsequently use a completion rig. Unless operational problems are encountered, expect to perf, frac, run tubing and clean up well in approximately 60 additional days.

Benson-Montin-Greer Drilling Corp.
East Puerto Chiquito Mancos Unit #41 (F-20)
SE/4 NW/4 Section 20, T-27N, R-1E
Rio Arriba County, New Mexico

EXHIBIT VIII
(TO ACCOMPANY FORM 9-331C)

(4-15) Extraneous facets of proposed operation:

(a) None.

NTL-6 ENVIRONMENTAL PROTECTION STATEMENT

Operator: Benson-Montin-Greer Drilling Corp.
Well No. and Lease: East Puerto Chiquito Mancos Unit #41 (F-20)
Location: SE/4 NW/4 Section 20, T-27N, R-1E
County and State: Rio Arriba County, New Mexico
Date: November 7, 1980

III. Multi-Point Surface Use and Operations Plan

Plan submitted is in sufficient detail to permit complete appraisal of environmental effects associated with proposed project. Submitted six copies to USGS District Engineer along with form 9-331C.

A-1. Existing Roads (see Exhibit A)

- (a) Topo or county road map.
- (b) Proposed route shown including distances to highway or county road.
- (c) Proposed access roads labeled.
- (d) Wildcat - all existing roads within 3-mile radius.
Development well - all existing roads within 1-mile radius.
- (e) Improvement and/or maintenance of existing roads will be only as necessary and normally consist of minor blade work.

A-2. Planned Access Roads (see Exhibit A)

- (a) Identify permanent and temporary access roads.
 - 1. Planned data on newly constructed access roads (see Exhibit A-1).
 - a. Width
 - b. Maximum grade
 - c. Turnouts
 - d. Drainage design
 - e. Location and size of culverts

- f. Surfacing material
- g. CL staked or flagged
- h. Where existing fence to be cut
- i. Gates or cattleguard to be cut
- j. Any existing gates to be replaced
- k. Any existing cattleguards to be replaced

A-3. Location of Existing Wells (see Exhibit B)

- (a) Wildcat - all wells within 2-mile radius (include water wells - use topo)
- (b) Development well - all wells within 1-mile radius (include water wells - use topo)

A-4. Location of Existing and/or Proposed Facilities - tank batteries, production facilities, and production, gathering and service lines (see Exhibit C)

- (a) Existing facilities within 1-mile radius of location owned or controlled by operator to be shown on a plat or map.
- (b) There are existing facilities owned by operator within 1-mile radius of proposed location.
- (c) Protective measures to functionally minimize or ameliorate hazards to livestock, waterfowl and other wildlife will be accomplished by fencing permanent or temporary pits as considered necessary.
- (d) New facilities will be located on drillsite pad of new well.
- (e) All production facilities will be located on the drillsite in optimum positions with due organizational regard to traffic mobility and pipeline options and flexibility.
- (f) All disturbed areas not needed for operation and maintenance will be reseeded, as required by surface jurisdictional and management agencies or fee land owner.
- (g) Future prospects for additional development of this leasehold have been functionally considered in this plan.

A-5. Location and Type of Water Supply (see Exhibit D)

- (a) Location of water for drilling purposes and method and route of transportation are stated in above mentioned Exhibit.

A-6. Source of Construction Materials (see Exhibit E)

- (a) Location of proposed source of sand, gravel, stone, soil, or construction materials and transportation route are described in above mentioned Exhibit.

A-7. Method of Handling Waste Disposal (see Exhibit F)

- (a) A brief written narrative description of method and location for safe containment and disposal of each type of waste material which results from drilling of proposed well and eventual disposal of drilling fluids and any produced oil or water recovered during testing operations are described in above mentioned Exhibit.

A-8. Ancillary Facilities (see Exhibit G)

- (a) Plans and maps for camps, airstrips, location and land area required, and methods and standards of construction are detailed in above mentioned Exhibit. Center lines of camps and airstrips shall be staked on the ground.

A-9. Well-Site Layout (see Exhibit H)

- (a) A proposed plat of well-site layout showing cuts and fills and relation to topography is provided, including cross sections. The proposed location of mud tanks, pits (reserve, burn and trash), pipe racks, access roads, turn-around areas, living facilities, soil material stockpiles (if necessary), and orientation of rig are indicated. Plans to line pit are noted.

A-10. Plans for Restoration of Surface (see Exhibit I)

- (a) Proposed program for surface restoration upon completion of operation is outlined in above mentioned Exhibit. Waste disposal is outlined in Exhibit F. Proposed timetable for commencement and completion of rehabilitation operations is also provided.

A-11. Other Information (see Exhibit J)

- (a) General description of topography.
- (b) Soil characteristics.
- (c) Formation lithologies.
- (d) Geologic features.
- (e) Flora.
- (f) Fauna.
- (g) Surface use activities.
- (h) Surface ownership at well location.
- (i) Surface ownership lands crossed by newly constructed or upgraded roads.
- (j) Any other information considered to be useful by operator to USGS and BLM and/or Forest Service.

- (k) Proximity to steep hillsides.
- (l) Proximity to steep gullies.
- (m) Proximity to water wells (see Exhibit B).
- (n) Proximity to ponds.
- (o) Proximity to streams.
- (p) Proximity to other facilities.
- (q) Proximity to occupied dwellings.
- (r) Proximity to archeological sites.
- (s) Proximity to historical sites.
- (t) Proximity to cultural sites.
- (u) Information concerning cuts and fills of roads (see Exhibit A-1).
- (v) Information concerning cuts and fills of location (see Exhibit H).
- (w) Construction practices necessary to accommodate potential geologic hazards.

A-12. Operator's Representative (see Exhibit K)

- (a) Name, address and phone number of operator's field representative(s).

A-13. Certification (see Exhibit L)

- (a) Signed by field representative.

IV. Environmental Analysis Requirements

- A. If preliminary inspection is not made prior to staking, an on-site inspection will normally be required by representatives of District Engineer (USGS), Operator, and Federal Surface Management Agency.

V. Approval of Subsequent Operations

- A. Must be done on 9-331A or 9-331C and approval obtained before work started.
- B. Operator must submit for approval suitable plan prior to any new construction or alteration of any existing facilities, including roads, dams and production facilities.

VI. Agreement for Rehabilitation of Privately-Owned Surface (see Exhibit K, if applicable)

- A. Form 9-331C shall contain information landowner's rehabilitation requirements.
- B. Written agreement or letter must be furnished.
- C. If landowner's requirements are impossible or impractical, a letter describing situation will be acceptable.

- D. If no arrangements made, USGS will request appropriate Federal agency to recommend surface restoration requirements.

VII. Well Abandonment (see Exhibit L, if applicable)

- A. No well abandonment operations will be commenced without prior approval of the District Engineer.
- B. Upon completion of abandonment or rehabilitation operations, District Engineer to be notified by Sundry Notice.

VIII. Water Well Conversion (see Exhibit M, if applicable)

- A. Well that encounters usable fresh water will not be approved if Federal Surface Management Agency wants to acquire well.
- B. If Federal Surface Management Agency elects to acquire well, it will reimburse operator for cost of any recoverble casing or well-head equipment which it requests to be left in or on the hole.
- C. Operator completes cleanup.

Benson-Montin-Greer Drilling Corp.
East Puerto Chiquito Mancos Unit #41 (F-20)
SE/4 NW/4 Section 20, T-27N, R-1E
Rio Arriba County, New Mexico

EXHIBIT A-1
TO ACCOMPANY EXHIBIT A (a & b)

(III-A-2-1) Planned data on newly constructed access roads:

(a) Width	<u>20'</u>
(b) Maximum grade	<u>8%</u>
(c) Turnouts	<u>None</u>
(d) Drainage design	<u>Natural</u>
(e) Location and size of culverts	<u>None</u>
(f) Surfacing material	<u>None</u>
(g) CL staked or flagged	<u>Yes</u>
(h) Where existing fence to be cut	<u>None</u>
(i) Gates or cattleguard to be used	<u>None</u>
(j) Any existing gates to be replaced	<u>None</u>
(k) Any existing cattleguards to be replaced	<u>None</u>

R I W

R I E

East Puerto Chiquito Mancos Unit #41 (F-20)
 SE/4 NW/4 Section 20, T-27N, R-1E
 Rio Arriba County, New Mexico

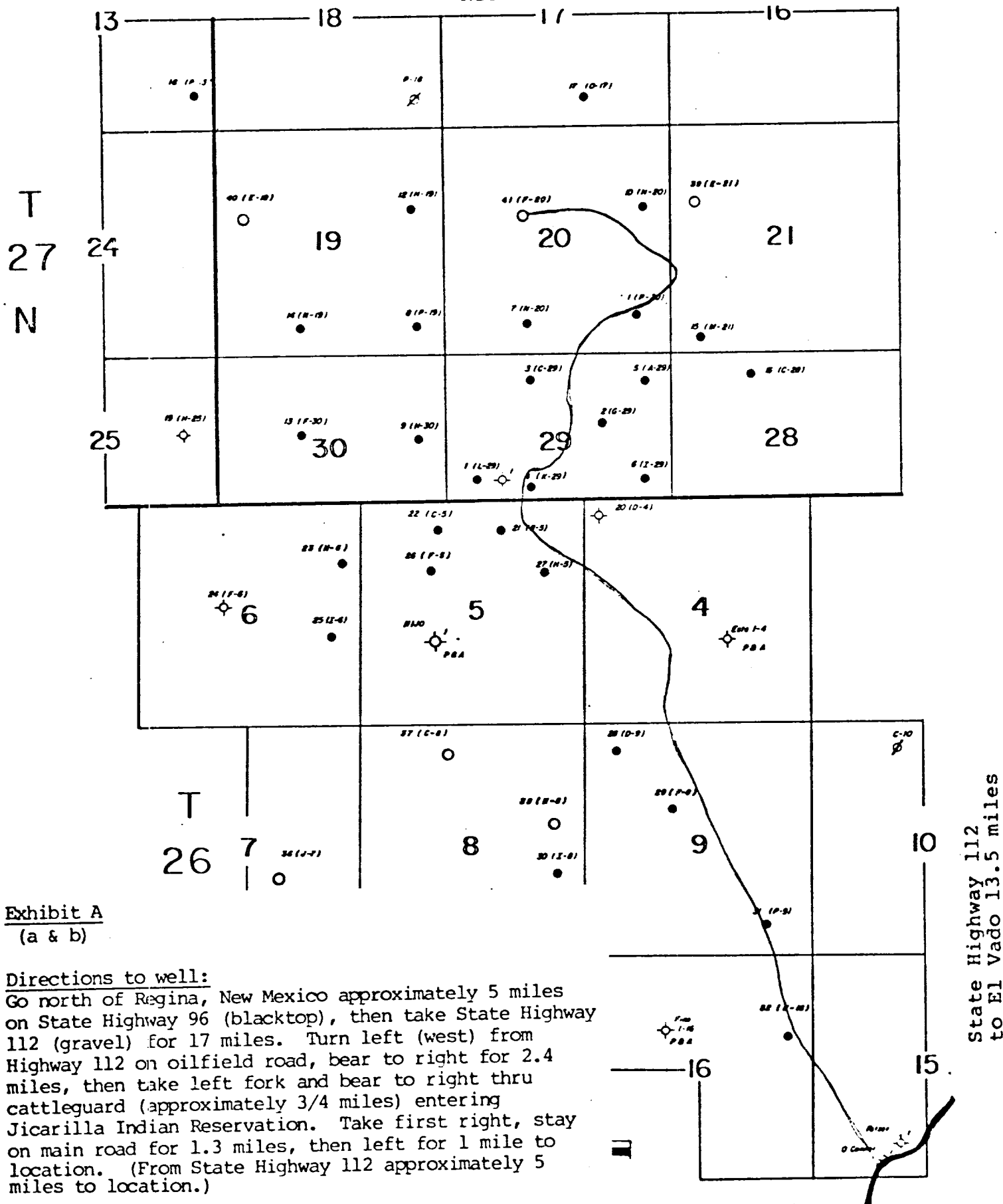


Exhibit A
 (a & b)

Directions to well:

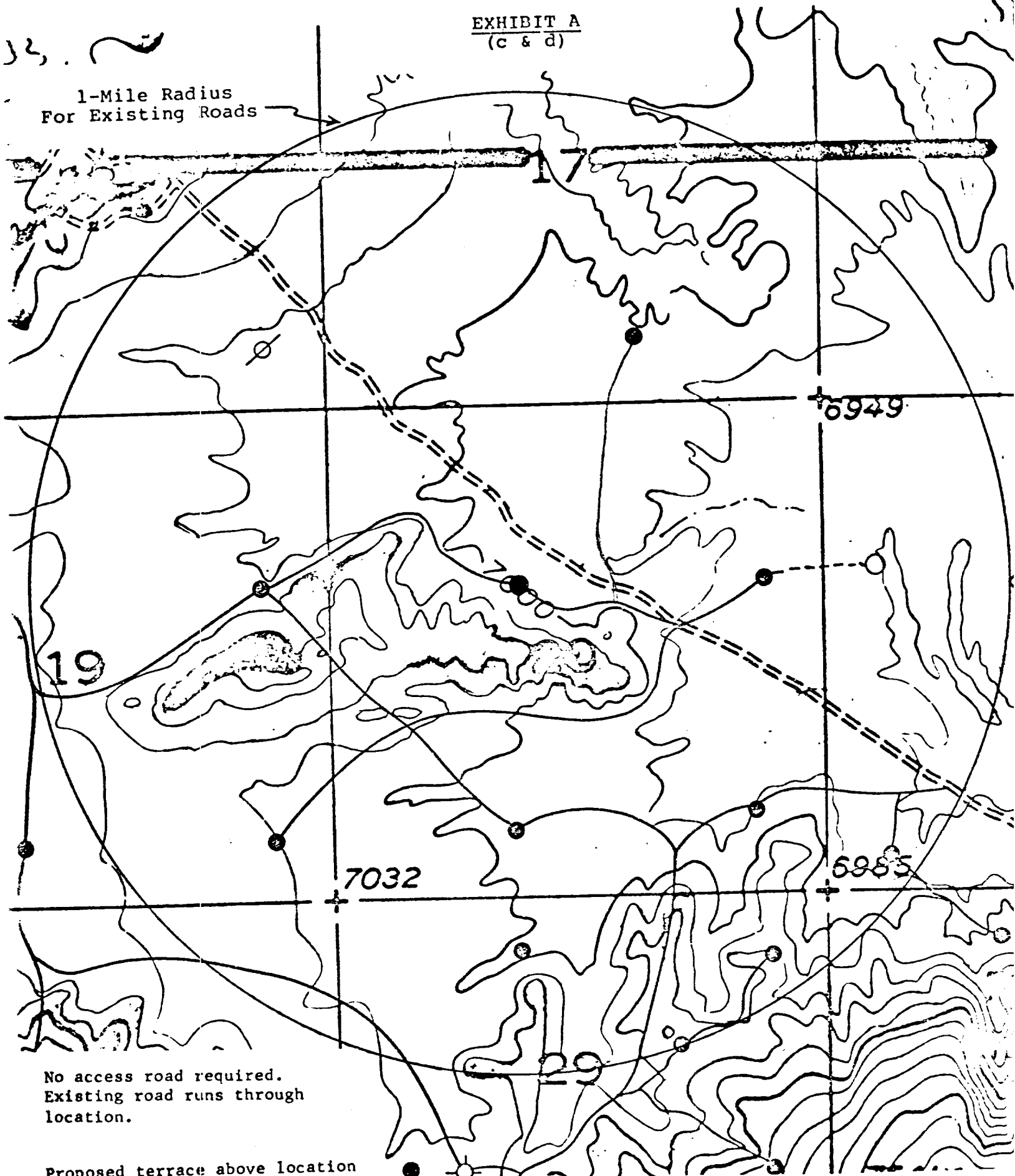
Go north of Regina, New Mexico approximately 5 miles on State Highway 96 (blacktop), then take State Highway 112 (gravel) for 17 miles. Turn left (west) from Highway 112 on oilfield road, bear to right for 2.4 miles, then take left fork and bear to right thru cattleguard (approximately 3/4 miles) entering Jicarilla Indian Reservation. Take first right, stay on main road for 1.3 miles, then left for 1 mile to location. (From State Highway 112 approximately 5 miles to location.)

State Highway 112
 to Regina 22 miles

State Highway 112
 to El Vado 13.5 miles

EXHIBIT A
(c & d)

1-Mile Radius
For Existing Roads

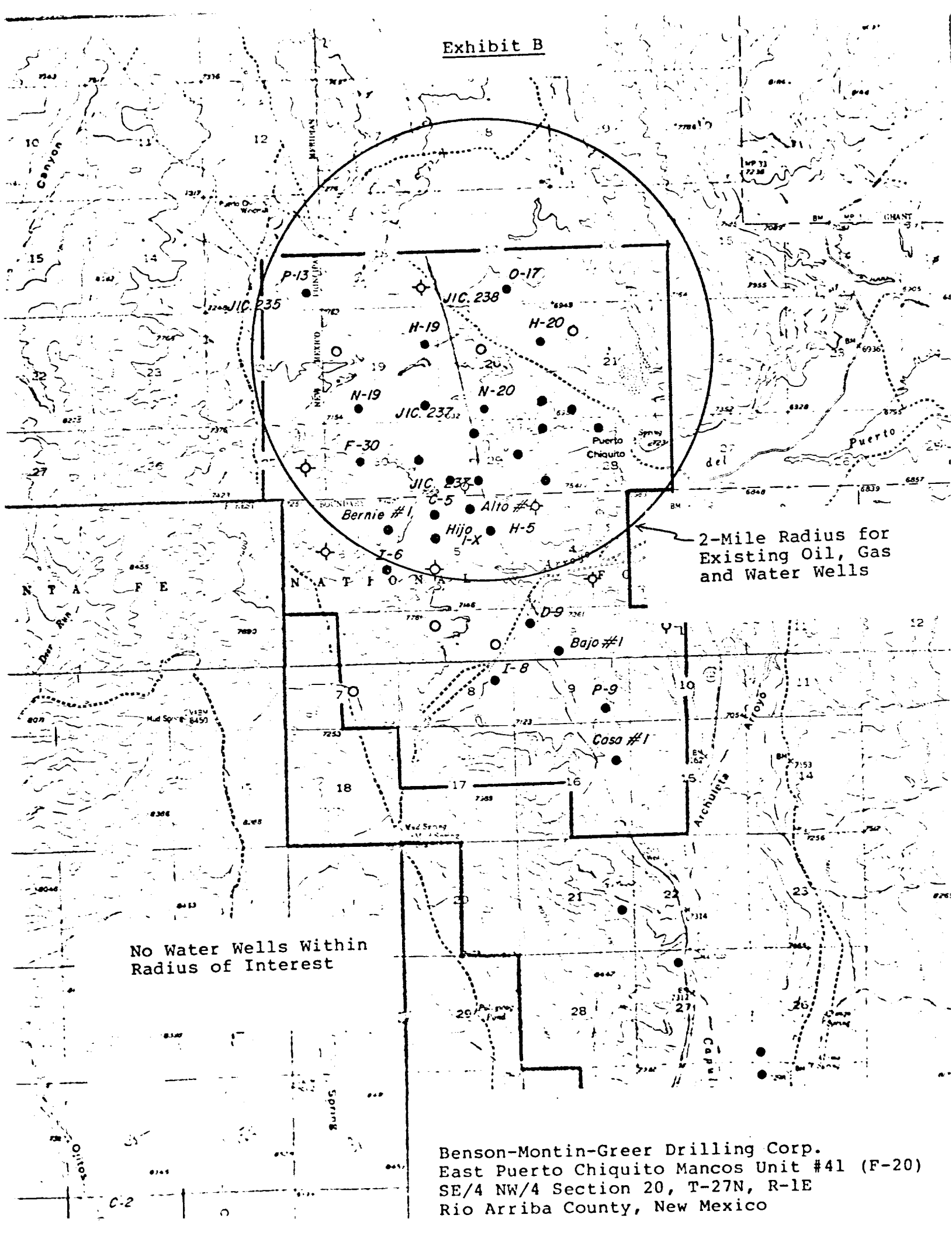


No access road required.
Existing road runs through
location.

Proposed terrace above location
to prevent run off from
flooding location.

Benson-Montin-Greer Drilling Corp.
East Puerto Chiquito Mancos Unit #41 (F-20)
SE/4 NW/4 Section 20, T-27N, R-1E
Rio Arriba County, New Mexico

Exhibit B

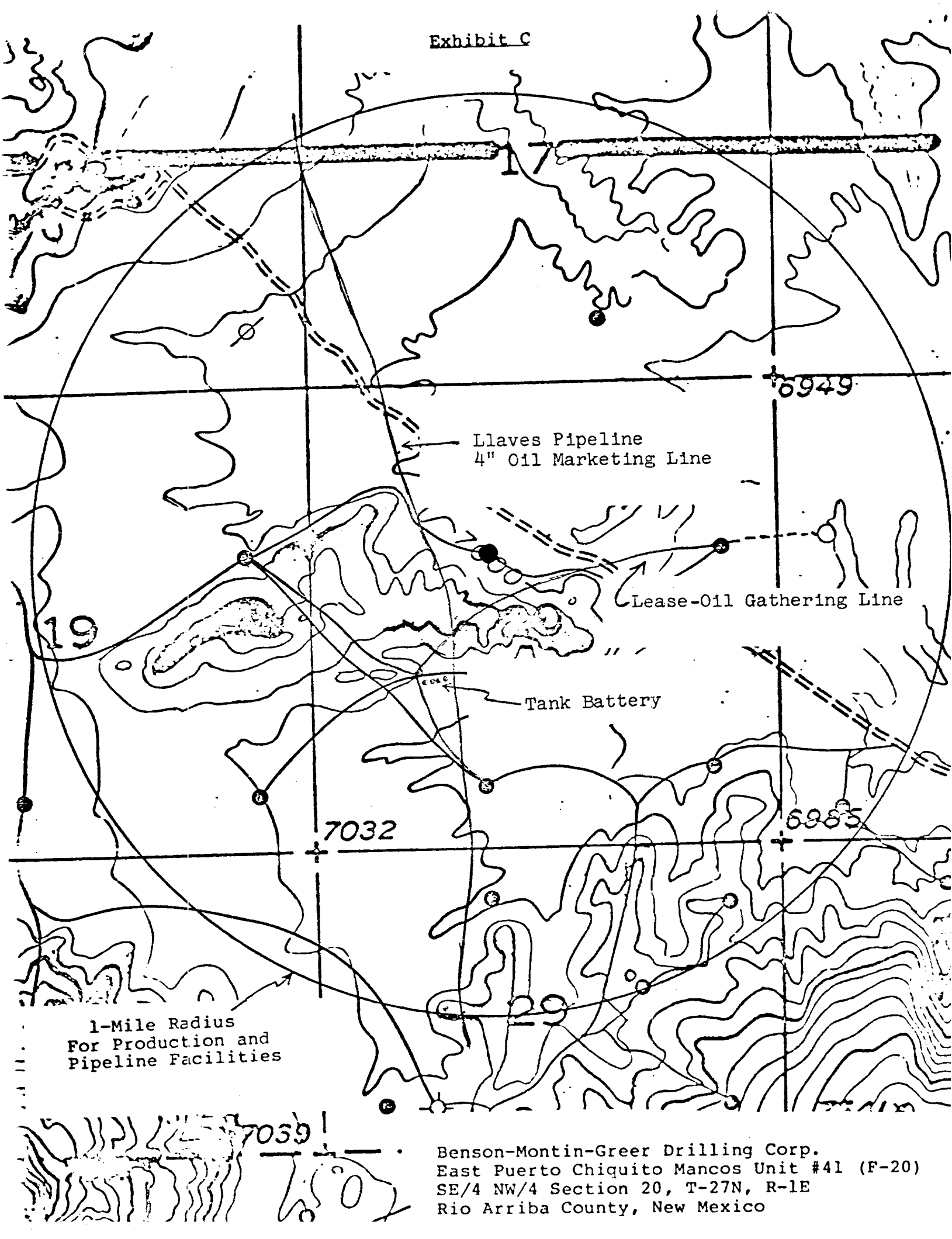


2-Mile Radius for Existing Oil, Gas and Water Wells

No Water Wells Within Radius of Interest

Benson-Montin-Greer Drilling Corp.
East Puerto Chiquito Mancos Unit #41 (F-20)
SE/4 NW/4 Section 20, T-27N, R-1E
Rio Arriba County, New Mexico

Exhibit C



Benson-Montin-Greer Drilling Corp.
East Puerto Chiquito Mancos Unit #41 (F-20)
SE/4 NW/4 Section 20, T-27N, R-1E
Rio Arriba County, New Mexico

Benson-Montin-Greer Drilling Corp.
East Puerto Chiquito Mancos Unit #41 (F-20)
SE/4 NW/4 Section 20, T-27N, R-1E
Rio Arriba County, New Mexico

EXHIBIT D

(III-A-5) Location, route and method of transportation, and type of water supply:

- (a) Location: Drilling water will be hauled from East Puerto Chiquito Mancos Unit Battery #2.
- (b) Route of transportation: 1/2 mile southwest of location to loading point.
- (c) Method of transportation: Water trucks.
- (d) Type of water supply: Fresh water.

Benson-Montin-Greer Drilling Corp.
East Puerto Chiquito Mancos Unit #41 (F-20)
SE/4 NW/4 Section 20, T-27N, R-1E
Rio Arriba County, New Mexico

EXHIBIT E

(III-A-6) Source of construction materials:

- (a) Sand: None
- (b) Gravel: None
- (c) Stone: None
- (d) Soil: None
- (e) Lumber will be purchased from suppliers in the Farmington area and will use transportation route as shown on Exhibit A (a & b).
- (f) Planned transportation route will be on suitable public or private roads.

Benson-Montin-Greer Drilling Corp.
East Puerto Chiquito Mancos Unit #41 (F-20)
SE/4 NW/4 Section 20, T-27N, R-1E
Rio Arriba County, New Mexico

EXHIBIT F

(III-A-7) Method of handling waste material:

- (a) Drill cuttings will be buried in reserve pit.
- (b) Drilling fluids will be collected in reserve pit, allowed to evaporate and dry, and buried when dry.
- (c) Small amounts of produced fluids will be collected in reserve pit, allowed to evaporate, and buried when dry.
- (d) Any sewage will be covered and buried when portable toilet removed.
- (e) Any garbage, cans, and general trash will be burned in burn pit and covered when reserve pit covered. Other general debris and waste material, such as junk iron, wire line, cans, and bags will either be burned or buried in reserve pit.
- (f) Drilling crews, under the supervision of contractor or operator, will control and dispose of waste material during drilling operations.
- (g) Roustabout or completion crews will dispose of trash after well is completed or abandoned. After drying of reserve pit, a general cleanup and covering of the pit along with leveling of location or drillsite will take place.

Benson-Montin-Greer Drilling Corp.
East Puerto Chiquito Mancos Unit #41 (F-20)
SE/4 NW/4 Section 20, T-27N, R-1E
Rio Arriba County, New Mexico

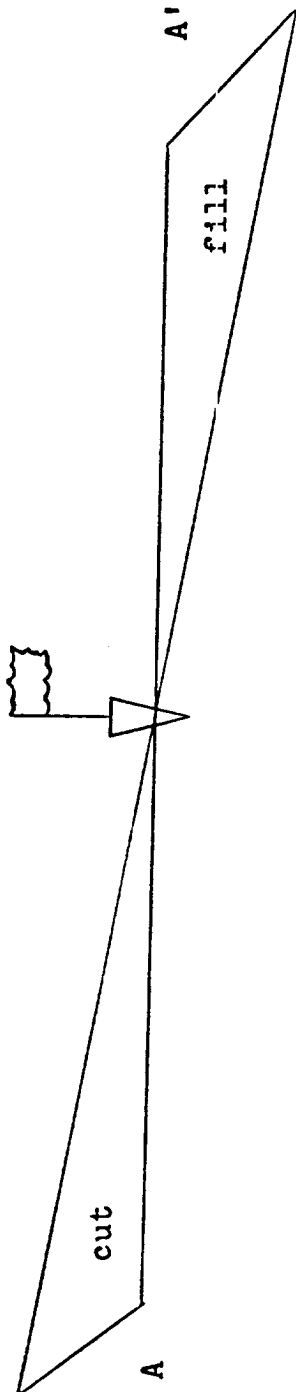
EXHIBIT G

(III-A-8) Ancillary facilities:

- (a) Camps planned: None (may have small house trailer on location for tool pusher).
- (b) Airstrips planned: None.
- (c) Area and land required for above: None.

EXHIBIT H

(III-A-9) Planned wellsite layout:



A - A' Northeast to Southwest
Maximum cut approximately 10 feet,
Minimum cut zero feet.



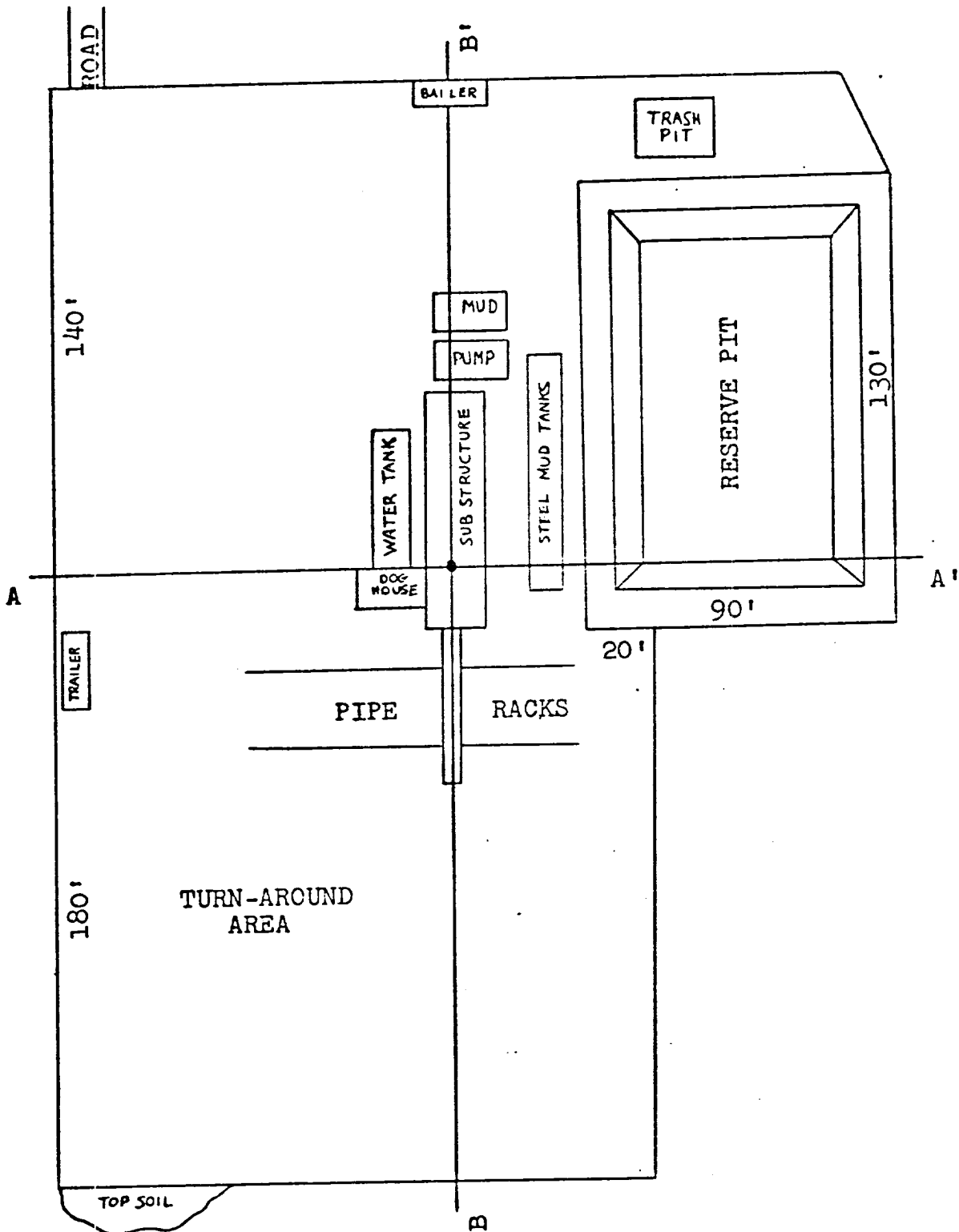
B - B' Northwest to Southeast
Wellsite location essentially level
in this direction. No significant
cuts or fills.

Drainage diversion terrace will be constructed
in a Northwest to Southeast direction immediately
up slope from cut to divert drainage around location.

DENSON-MANCO UNIT #41 (F-20)
East Puerto Chiquito Mancos Unit #41 (F-20)
SE/4 NW/4 Section 20, T-27N, R-1E
Rio Arriba County, New Mexico

EXHIBIT H

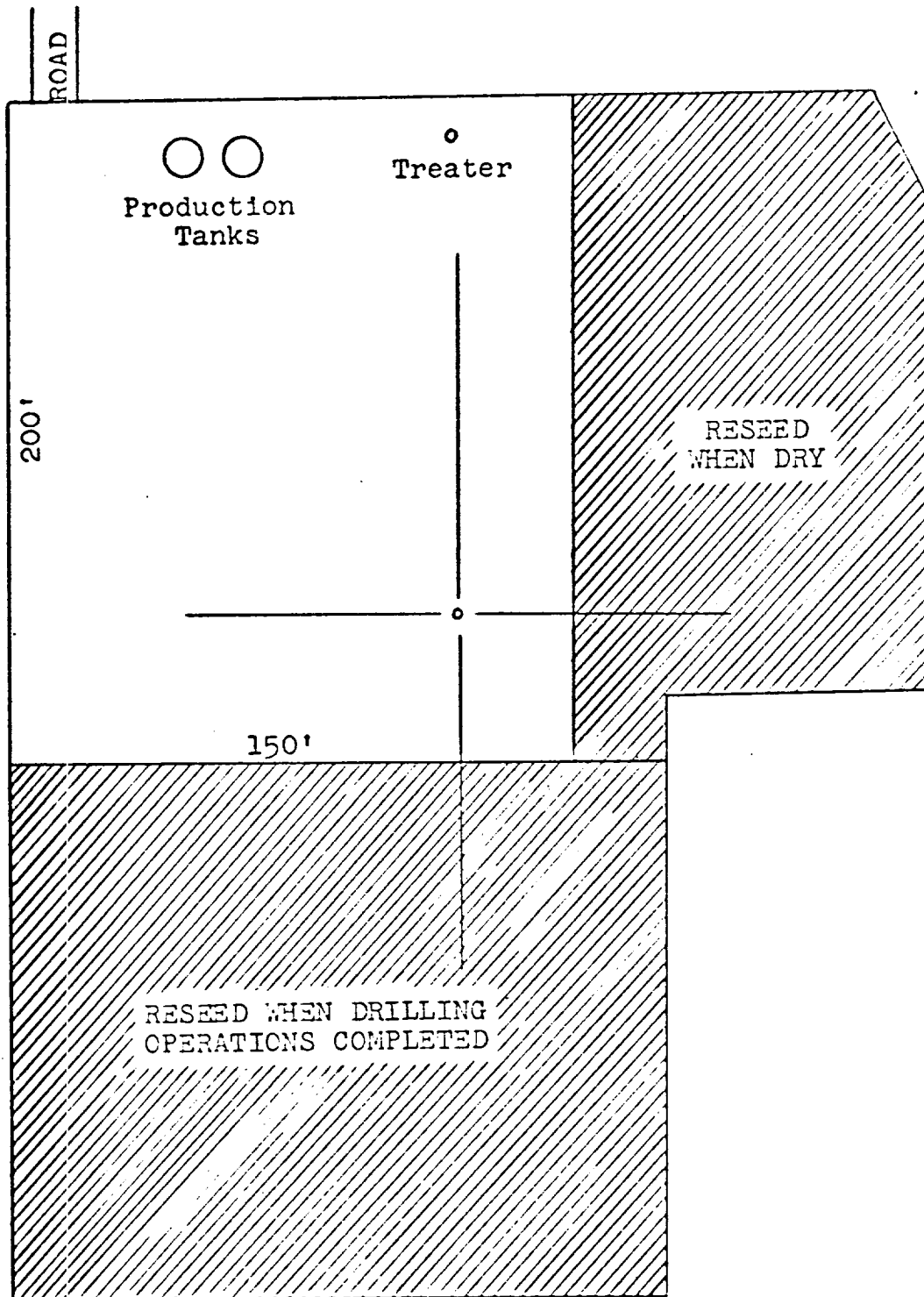
(III-A-9) Planned wellsite layout:



Reserve pit will be unlined.

EXHIBIT I

(III-A-10) Planned restoration of surface:



- (A) Waste disposal outlined in Exhibit F.
- (B) Rehabilitation commencement of wellsite surface will take place when well is completed and reserve pit is dry. Work will be completed 2 1/2 days after commencement.
- (C) Reseeding will take place within one week of completion of foregoing.

EXHIBIT J

(III-A-11) Other information:

- (a) Area is rolling with occasional mesa-valley topography developed. Area drained by streams and washes.
- (b) Soil characteristics: sandy-shale and clayey loam, where bare rock and shale exposed, no soil profile is developed.
- (c) Surface formation lithologies are sandstone, siltstone, and shale.
- (d) No unusual geologic features are present. Surface geomorphic features are described in (a).
- (e) Flora: Normal mountain grasses are present, shrubs such as sagebrush, Mormon tea, and occasional yucca are present.
- (f) Fauna: Rabbit, coyotes, deer and elk are known. Domestic cattle, horses, and sheep occasionally graze the area. Small dry land mammals, rodents and reptiles are present. It is doubtful that the peregrine falcon and the black-footed ferret exist in the area. A normal suite of birds, such as the pinon jay, raven, and an occasional hawk have been seen.
- (g) Surface use as grazing for domestic livestock.
- (h) Surface ownership at well location: Jicarilla Apache Tribe, Dulce, New Mexico.
- (i) Surface ownership lands crossed by newly constructed or upgraded roads: Jicarilla Apache Tribe.
- (j) No other information.
- (k) No steep hillsides nearby.
- (l) No steep gullies; except to east of location.
- (m) Proximity to water wells: see Exhibit B.
- (n) No ponds nearby.
- (o) Streams nearby: Arroyo del Puerto Chiquito 3 miles southeast.
- (p) No other facilities nearby.
- (q) No occupied dwellings nearby.
- (r) No archaeological sites in area.

Benson-Montin-Greer Drilling Corp.
East Puerto Chiquito Mancos Unit #41 (F-20)
SE/4 NW/4 Section 20, T-27N, R-1E
Rio Arriba County, New Mexico

EXHIBIT J
(continued)

- (s) No historical sites in area.
- (t) No cultural sites in area.
- (u) Information concerning cuts and fills of roads, see Exhibit A-1.
- (v) Information concerning cuts and fills of location, see Exhibit H.
- (w) Construction practices necessary to accommodate potential geologic hazards: None.

Benson-Montin-Greer Drilling Corp.
East Puerto Chiquito Mancos Unit #41 (F-20)
SE/4 NW/4 Section 20, T-27N, R-1E
Rio Arriba County, New Mexico

EXHIBIT K

(III-A-12) Operator's representatives:

(a) Virgil L. Stoabs
221 Petroleum Center Building
Farmington, NM 87401

Office: (505) 325-8874
Residence: (505) 325-9772

(b) Albert R. Greer
221 Petroleum Center Building
Farmington, NM 87401

Office: (505) 325-8874
Residence: (505) 325-2674

(c) John Pool
706 Lovers Lane
Aztec, NM 87410

Residence: (505) 334-6616

(d) M. P. York
725 W. Animas
Farmington, NM 87401

Residence: (505) 325-9714

(e) E. A. Templeman
520 Park Avenue
Aztec, NM 87410

Residence: (505) 334-9197

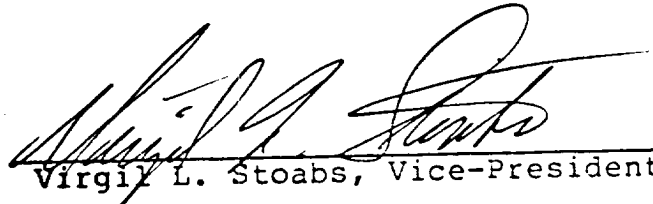
Benson-Montin-Greer Drilling Corp.
East Puerto Chiquito Mancos Unit #41 (F-20)
SE/4 NW/4 Section 20, T-27N, R-1E
Rio Arriba County, New Mexico

EXHIBIT L

(III-A-13) Certification:

I hereby certify that I, or persons under my direct supervision, have inspected the proposed drillsite and access route; that I am familiar with the conditions which presently exist; that the statements made in this plan are, to the best of my knowledge, true and correct; and, that the work associated with the operations proposed herein will be performed by Benson-Montin-Greer Drilling Corp. and its contractors and subcontractors in conformity with this plan and the terms and conditions under which it is approved.

November 7, 1980
Date


Virgil L. Stoabs, Vice-President