

UNITED STATES
DEPARTMENT OF THE INTERIOR
GEOLOGICAL SURVEY

APPLICATION FOR PERMIT TO DRILL, DEEPEN, OR PLUG BACK

1a. TYPE OF WORK

DRILL ☒DEEPEN ☐PLUG BACK ☐

b. TYPE OF WELL

OIL
WELL ☐GAS
WELL ☒

OTHER

SINGLE
ZONE ☒MULTIPLE
ZONE ☐

2. NAME OF OPERATOR

El Paso Natural Gas Company

3. ADDRESS OF OPERATOR

Box 289, Farmington, New Mexico 87401

4. LOCATION OF WELL (Report location clearly and in accordance with any State requirements.)*

At surface

1520' S, 1700' E
At proposed prod. zone

RECEIVED

14. DISTANCE IN MILES AND DIRECTION FROM NEAREST TOWN OR POST OFFICE

20 Miles SE of Navajo City

15. DISTANCE FROM PROPOSED*

LOCATION TO NEAREST
PROPERTY OR LEASE LINE, FT.
(Also to nearest drlg. unit line, if any)

940'

18. DISTANCE FROM PROPOSED LOCATION*
TO NEAREST WELL, DRILLING, COMPLETED,
OR APPLIED FOR, ON THIS LEASE, FT.

2000'

16. NO. OF ACRES IN LEASE
TO THIS WELL
FARMINGTON, N. M.
Unit

19. PROPOSED DEPTH

8100

17. NO. OF ACRES ASSIGNED
TO THIS WELL

E/320.00

20. ROTARY OR CABLE TOOLS

Rotary

21. ELEVATIONS (Show whether DF, RT, GR, etc.)

6787' GL

22. APPROX. DATE WORK WILL START*

23.

PROPOSED CASING AND CEMENTING PROGRAM

SIZE OF HOLE	SIZE OF CASING	WEIGHT PER FOOT	SETTING DEPTH	QUANTITY OF CEMENT
13 3/4"	9 5/8"	32.3#	200'	224 cu. ft. circulated
8 3/4"	7"	20.0#	3970'	276 cu. ft. to cover Ojo Alamo
6 1/4"	4 1/2"	10.5# & 11.6#	8100'	636 cu. ft. to fill to intermediate

Selectively perforate and sand water fracture the Dakota formation.

A 3000 psi WP and 6000 psi test double gate preventor equipped with blind and pipe rams
will be used for blow out pervention on this well.

This gas is dedicated.

This action is subject to administrative
appeal pursuant to 30 CFR 290.

The E/2 of Section 19 is dedicated to this well.

DRILLING OPERATIONS AUTHORIZED ARE
SUBJECT TO COMPLIANCE WITH ATTACHED
"GENERAL REQUIREMENTS"IN ABOVE SPACE DESCRIBE PROPOSED PROGRAM: If proposal is to deepen or plug back, give data on present productive zone and proposed new productive
zone. If proposal is to drill or deepen directionally, give pertinent data on subsurface locations and measured and true vertical depths. Give blowout
preventer program, if any.

24.

SIGNED

J. G. Luisico

TITLE

Drilling Clerk

DATE

11-24-80

(This space for Federal or State office use)

PERMIT NO.

APPROVAL DATE

APPROVED BY

TITLE

DATE

CONDITIONS OF APPROVAL

FEB 9 1981
A. B. W. W. W.
DIRECTOR OF ENERGY

NMOCC

*See Instructions On Reverse Side

NEW MEXICO OIL CONSERVATION COMMISSION
WELL LOCATION AND ACREAGE DEDICATION PLAT

Form C-102
Supersedes C-128
Effective 1-1-65

All distances must be from the outer boundaries of the Section.

Operator El Paso Natural Gas Company			Lease San Juan 27-4 Unit (SF-080669)		Well No. 45E
Unit Letter J	Section 19	Township 27N	Range 14W	County Rio Arriba	
Actual Footage Location of Well: 1520 feet from the South line and 1700 feet from the East line					
Ground Level Elev. 6787	Producing Formation DAKOTA		Pool BASIN DAKOTA	Dedicated Acreage: 320.00 Acres	

1. Outline the acreage dedicated to the subject well by colored pencil or hatchure marks on the plat below.
2. If more than one lease is dedicated to the well, outline each and identify the ownership thereof (both as to working interest and royalty).
3. If more than one lease of different ownership is dedicated to the well, have the interests of all owners been consolidated by communitization, unitization, force-pooling, etc?

☒ Yes ☐ No If answer is "yes," type of consolidation Unitization

If answer is "no," list the owners and tract descriptions which have actually been consolidated. (Use reverse side of this form if necessary.) _____

No allowable will be assigned to the well until all interests have been consolidated (by communitization, unitization, forced-pooling, or otherwise) or until a non-standard unit, eliminating such interests, has been approved by the Commission.

NOTE:
THIS PLAT IS REISSUED TO
REFLECT CHANGE IN
NOMENCLATURE, FORMATION
AND ACREAGE DEDICATION.
9-23-80

RECEIVED
DEC 1 1980
U. S. GEOLOGICAL SURVEY
WASHINGTON, D. C.

19

#45

RECEIVED
FEB 8 1981
OIL CON. COM.
DIST. 3
SF-080669

1520'
1700'

CERTIFICATION

I hereby certify that the information contained herein is true and complete to the best of my knowledge and belief.

D. G. Guise

Name
Drilling Clerk
Position
El Paso Natural Gas Company
Company
November 24, 1980
Date

I hereby certify that the well location shown on this plat was plotted from field notes of actual surveys made by me or under my supervision, and that the same is true and correct to the best of my knowledge and belief.

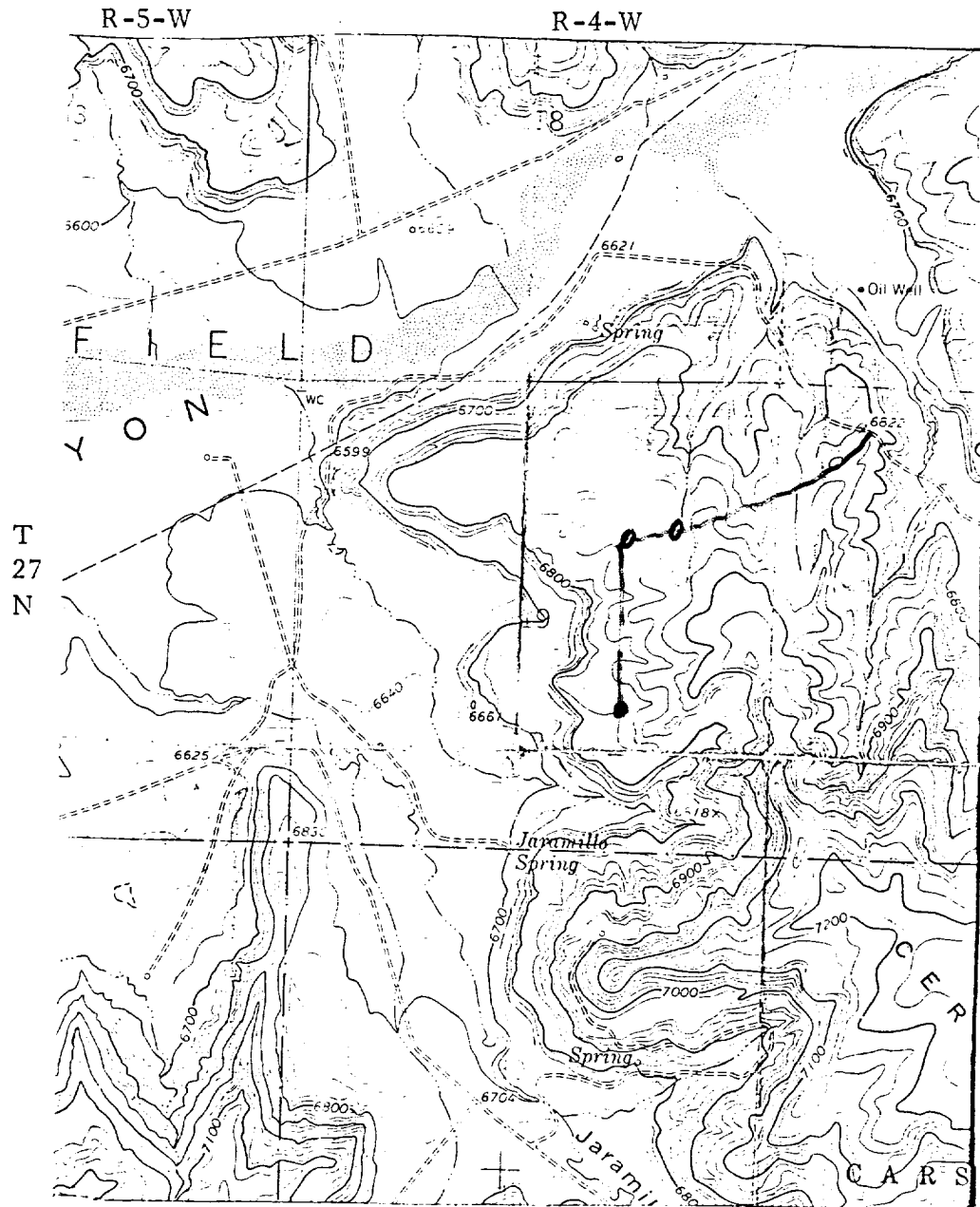
Date Surveyed
April 21, 1974
Registered Professional Engineer
and/or Land Surveyor
Fred B. Kern
Fred B. Kern

Certificate No.

3950

0 330 660 990 1320 1650 1980 2310 2640 2970 3300 3630 3960 4290 4620 4950 5280 5610 5940 6270 6600

EL PASO NATURAL GAS COMPANY
 San Juan 27-4 Unit #45E
 SE 19-27-4



MAP #1

LEGEND OF RIGHT-OF-WAYS

EXISTING ROADS	— — — — —
EXISTING PIPELINES	+ + +
EXISTING ROAD & PIPELINE	++ +
PROPOSED ROADS	— — — — —
PROPOSED PIPELINES	+ + +
PROPOSED ROAD & PIPELINE	++ +