

UNITED STATES
DEPARTMENT OF THE INTERIOR
GEOLOGICAL SURVEY

30-1239-22640

APPLICATION FOR PERMIT TO DRILL, DEEPEN, OR PLUG BACK

1a. TYPE OF WORK

DRILL ☒DEEPEN ☐PLUG BACK ☐

b. TYPE OF WELL

OIL

WELL ☐

GAS

WELL ☒

OTHER

SINGLE

ZONE ☐

MULTIPLE

ZONE ☒

2. NAME OF OPERATOR

El Paso Natural Gas Company

3. ADDRESS OF OPERATOR

PO Box 289, Farmington, NM 87401

4. LOCATION OF WELL (Report location clearly and in accordance with any State requirements.)*

At surface

1840'S, 1120'W

At proposed prod. zone

14. DISTANCE IN MILES AND DIRECTION FROM NEAREST TOWN OR POST OFFICE*

17 miles southeast of Navajo City, NM

15. DISTANCE FROM PROPOSED*

LOCATION TO NEAREST

PROPERTY OR LEASE LINE, FT.

(Also to nearest drlg. unit line, if any)

1120'

18. DISTANCE FROM PROPOSED LOCATION*

TO NEAREST WELL, DRILLING, COMPLETED,

OR APPLIED FOR, ON THIS LEASE, FT.

2000'

16. NO. OF ACRES IN LEASE

unit

17. NO. OF ACRES ASSIGNED

TO THIS WELL

4/320' + 4/320'

19. PROPOSED DEPTH

7900'

20. ROTARY OR CABLE TOOLS

Rotary

21. ELEVATIONS (Show whether DF, RT, GR, etc.)

6612' GL

22. APPROX. DATE WORK WILL START*

23.

PROPOSED CASING AND CEMENTING PROGRAM

SIZE OF HOLE	SIZE OF CASING	WEIGHT PER FOOT	SETTING DEPTH	QUANTITY OF CEMENT
17 1/2"	13 3/8"	48.0#	200'	278 cu.ft.circ.to surface
12 1/2"	9 5/8"	40.0#	3814'	616 cu.ft.cover Ojo Alamo
8 3/4"	7"	20.0#	3364-6195'	647 cu.ft.to circ. liner
6 1/4"	4 1/2"	10.5#&11.6#	6045-7900'	324 cu.ft.to circ. liner

Selectively perforate and sandwater fracture the Mesa Verde and Dakota formations.

A 3000 psi WP and 6000 psi test capable gate preventer equipped with blind and pipe rams will be used for blow out prevention on this well.

This gas is dedicated.

The E/2 of Section 14 is dedicated to this well.

IN ABOVE SPACE DESCRIBE PROPOSED PROGRAM: If proposal is to deepen or plug back, give data on present productive zone and proposed new productive zone. If proposal is to drill or deepen directionally, give pertinent data on subsurface locations and measured and true vertical depths. Give blowout preventer program, if any.

24.

SIGNED

A. G. Swice

TITLE

Drilling Clerk

DATE

11-12-80

(This space for Federal or State office use)

PERMIT NO.

APPROVAL DATE

APPROVED BY

CONDITIONS OF APPROVAL

TITLE

DATE

DISTRICT ENGINEER

NMOCC

*See Instructions On Reverse Side

NEW MEXICO OIL CONSERVATION COMMISSION
WELL LOCATION AND ACREAGE DEDICATION PLAT

Form C-102
Supersedes C-128
Effective 1-1-65

All distances must be from the outer boundaries of the Section.

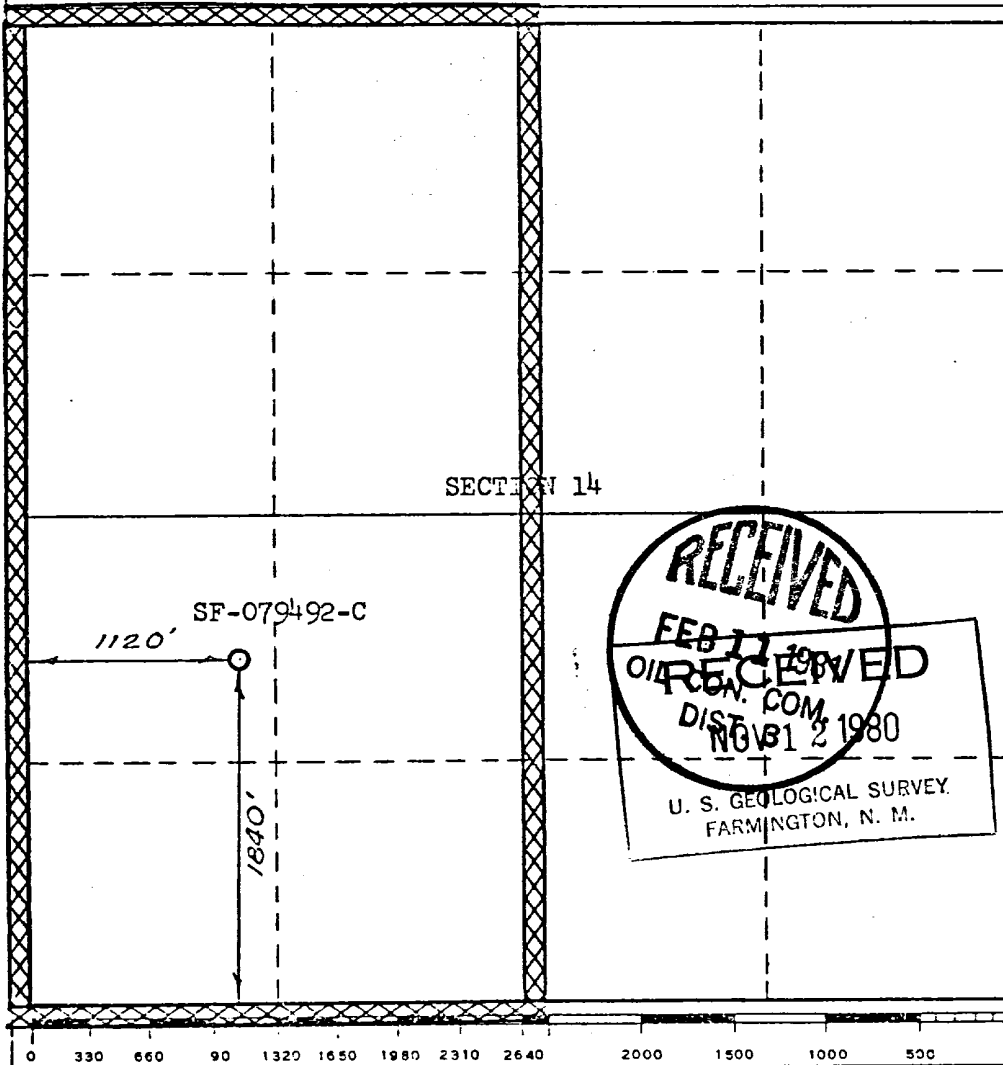
Operator EL PASO NATURAL GAS COMPANY		Lease SAN JUAN 27-5 UNIT (SF-079492-C)		Well No. 98E
Unit Letter L	Section 14	Township 27-N	Range 5-W	County RIO ARriba
Actual Footage Location of Well: 1840 feet from the SOUTH line and 1120 feet from the WEST line				
Ground Level Elev. 6612	Producing Formation MESA VERDE - DAKOTA	Pool BLANCO MESA VERDE BASIN DAKOTA	Dedicated Acreage: 320.00 & 320.00 Acres	

- Outline the acreage dedicated to the subject well by colored pencil or hachure marks on the plat below.
- If more than one lease is dedicated to the well, outline each and identify the ownership thereof (both as to working interest and royalty).
- If more than one lease of different ownership is dedicated to the well, have the interests of all owners been consolidated by communitization, unitization, force-pooling, etc?

☒ Yes ☐ No If answer is "yes," type of consolidation Unitization

If answer is "no," list the owners and tract descriptions which have actually been consolidated. (Use reverse side of this form if necessary.)

No allowable will be assigned to the well until all interests have been consolidated (by communitization, unitization, forced-pooling, or otherwise) or until a non-standard unit, eliminating such interests, has been approved by the Commission.



CERTIFICATION

I hereby certify that the information contained herein is true and complete to the best of my knowledge and belief.

A. G. Sisco
Name
Drilling Clerk

Position
El Paso Natural Gas Co.

Company
November 12, 1980

Date

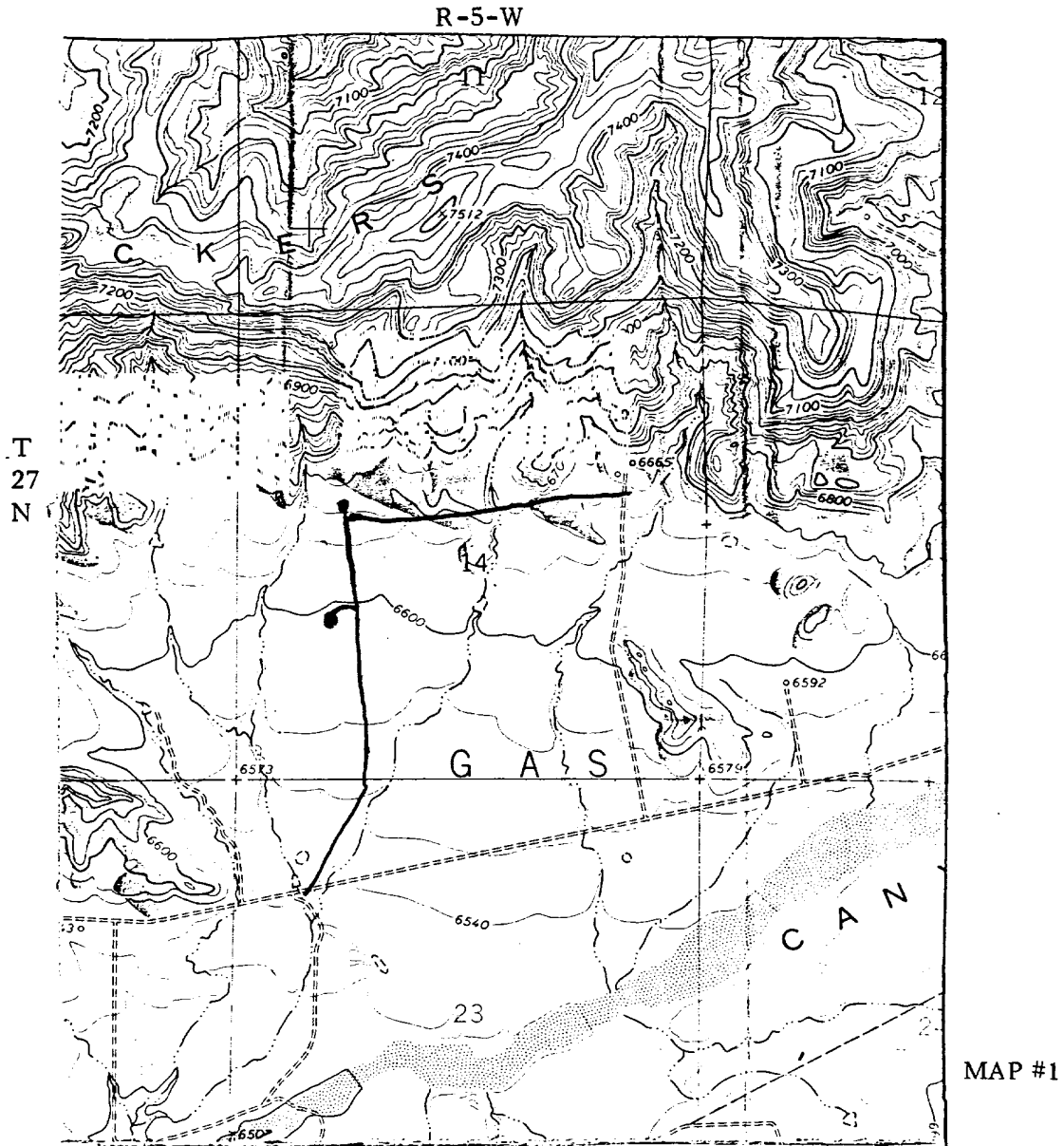
I hereby certify that the well location shown on this plat was plotted from field notes of actual surveys made by me or under my supervision, and that the same is true and correct to the best of my knowledge and belief.

Date Surveyed
NOVEMBER 7, 1974

Registered Professional Engineer
and/or Land Surveyor

David J. Kilian
Certificate No. 1760

EL PASO NATURAL GAS COMPANY
 San Juan 27-5 Unit #98E (MD)
 SW 14-27-5



LEGEND OF RIGHT-OF-WAYS

EXISTING ROADS	—
EXISTING PIPELINES	+ + +
EXISTING ROAD & PIPELINE	+++
PROPOSED ROADS	—
PROPOSED PIPELINES	+ + +
PROPOSED ROAD & PIPELINE	+++