

UNITED STATES
DEPARTMENT OF THE INTERIOR
GEOLOGICAL SURVEY

30-039-22812

APPLICATION FOR PERMIT TO DRILL, DEEPEN, OR PLUG BACK

1a. TYPE OF WORK

DRILL ☒DEEPEN ☐PLUG BACK ☐

b. TYPE OF WELL

OIL
WELL ☐GAS
WELL ☒

OTHER

SINGLE
ZONE ☒MULTIPLE
ZONE ☐

2. NAME OF OPERATOR

El Paso Natural Gas Company

3. ADDRESS OF OPERATOR

PO Box 289, Farmington, NM 87401

4. LOCATION OF WELL (Report location clearly and in accordance with any State requirements.)

At surface

2200'S, 800'E

At proposed prod. zone

14. DISTANCE IN MILES AND DIRECTION FROM NEAREST TOWN OR POST OFFICE*

9 miles southeast of Gobernador, NMU. S. GEOLOGICAL SURVEY
FARMINGTON, N. M.

15. DISTANCE FROM PROPOSED*

LOCATION TO NEAREST
PROPERTY OR LEASE LINE, FT.
(Also to nearest drlg. unit line, if any)

800'

16. NO. OF ACRES IN LEASE

2559.80 unit?

17. NO. OF ACRES ASSIGNED

TO THIS WELL
320.0018. DISTANCE FROM PROPOSED LOCATION*
TO NEAREST WELL, DRILLING, COMPLETED,
OR APPLIED FOR, ON THIS LEASE, FT.

2640'

19. PROPOSED DEPTH

6250'

20. ROTARY OR CABLE-TOOLS

Rotary

21. ELEVATIONS (Show whether DF, RT, GR, etc.)

6748' GL

22. APPROX. DATE WORK WILL START*

23.

DRILLING OPERATIONS AUTHORIZED ARE
SUBJECT TO COMPLIANCE WITH ATTACHED
"GENERAL CASEMENT AND CEMENTING PROGRAM"This section is subject to administrative
appeal pursuant to 30 CFR 290.

SIZE OF HOLE	SIZE OF CASING	WEIGHT PER FOOT	SETTING DEPTH	QUANTITY OF CEMENT
13 3/4"	9 5/8"	36.0#	200'	224 cu.ft. to circulate
8 3/4"	7"	20.0#	4005'	256 cu.ft. to cover Ojo Ala
6 1/4"	4 1/2" liner	10.5#	3855-6250'	417 cu.ft. to circ. liner

Selectively perforate and sandwater fracture the Mesa Verde formation.

A 3000 psi WP and 6000 psi test double gate preventer equipped with
blind and pipe rams will be used for blow out prevention on this well.

This gas is dedicated.

The E/2 of Section 9 is dedicated to this well.

IN ABOVE SPACE DESCRIBE PROPOSED PROGRAM: If proposal is to deepen or plug back, give data on present productive zone and proposed new productive
zone. If proposal is to drill or deepen directionally, give pertinent data on subsurface locations and measured and true vertical depths. Give blowout
preventer program, if any.

24.

SIGNED

A. G. Buico

TITLE

Drilling Clerk

DATE

July 14, 1981

(This space for Federal or State office use)

PERMIT NO.

APPROVAL DATE

APPROVED BY

TITLE

CONDITIONS OF APPROVAL, IF ANY:

DATE

Will 104 for NSL

*See Instructions On Reverse Side

APPROVED
DATE
Dean Elliott
DISTRICT ENGINEER

N MEXICO OIL CONSERVATION COMMISSION
WELL LOCATION AND ACREAGE DEDICATION PLAT

Form C-102
Supersedes C-129
Effective 1-1-65

All distances must be from the outer boundaries of the Section.

Operator EL PASO NATURAL GAS COMPANY		Lease SAN JUAN 27-4 UNIT (SE-080668)		Well No. 139
Unit Letter I	Section 9	Township 27-N	Range 4-W	County RIO ARriba
Actual Footage Location of Well: 2200 feet from the SOUTH line and 800 feet from the EAST line				
Ground Level Elev. 6748	Producing Formation MESA VERDE		Pool BLANCO MESA VERDE	Dedicated Acreage: 320.00 Acres

1. Outline the acreage dedicated to the subject well by colored pencil or hachure marks on the plat below.
2. If more than one lease is dedicated to the well, outline each and identify the ownership thereof (both as to working interest and royalty).
3. If more than one lease of different ownership is dedicated to the well, have the interests of all owners been consolidated by communitization, unitization, force-pooling, etc?

☒ Yes ☐ No If answer is "yes," type of consolidation unitization

If answer is "no," list the owners and tract descriptions which have actually been consolidated. (Use reverse side of this form if necessary.) _____

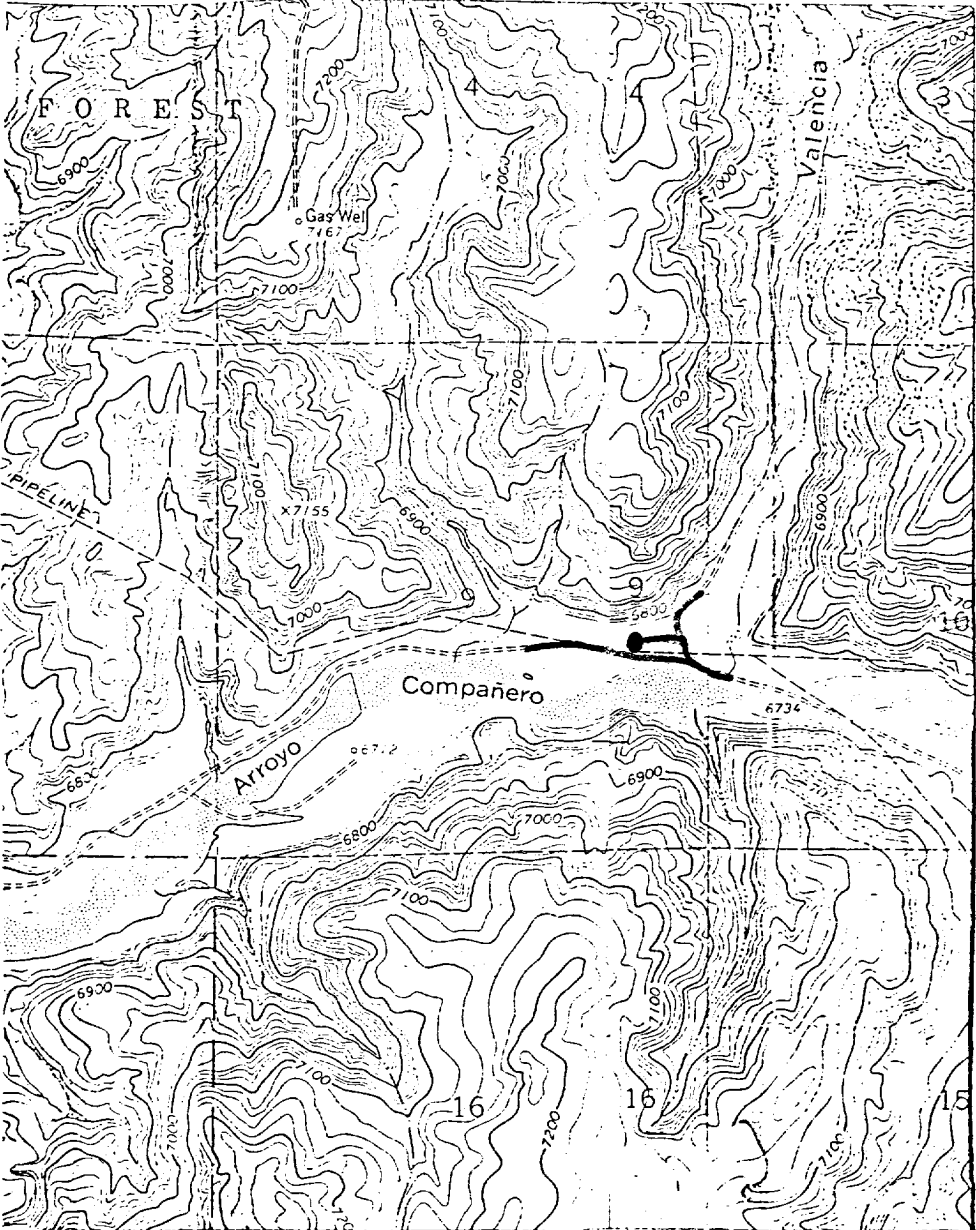
No allowable will be assigned to the well until all interests have been consolidated (by communitization, unitization, forced-pooling, or otherwise) or until a non-standard unit, eliminating such interests, has been approved by the Commission. NOTE: THIS PLAT REISSUED TO SHOW WELL NUMBER AND PRODUCING FORMATION CHANGE 6-9-81

	CERTIFICATION	
	<p>I hereby certify that the information contained herein is true and complete to the best of my knowledge and belief.</p> <p><i>D. G. Buice</i> Name Drilling Clerk Position El Paso Natural Gas Company July 14, 1981 Date</p>	
	<p>I hereby certify that the well location shown on this plat was plotted from field notes of actual surveys made by me or under my supervision, and that the same is true and correct to the best of my knowledge and belief.</p> <p>Date Surveyed OCTOBER 25, 1973 Registered Professional Engineer and/or Land Surveyor <i>David W. Olsen</i> Certificate No. 1760</p>	

EL PASO NATURAL GAS COMPANY
 San Juan 27-4 Unit #139
 SE 9-27-4

R-4-W

T
27
N



MAP #1

LEGEND OF RIGHT-OF-WAYS

- EXISTING ROADS —————
- EXISTING PIPELINES + + +
- EXISTING ROAD & PIPELINE + + + +
- PROPOSED ROADS —————
- PROPOSED PIPELINES + + +
- PROPOSED ROAD & PIPELINE + + + +