

UNITED STATES
DEPARTMENT OF THE INTERIOR
GEOLOGICAL SURVEY

APPLICATION FOR PERMIT TO DRILL, DEEPEN, OR PLUG BACK

1a. TYPE OF WORK

DRILL ☒DEEPEN ☐PLUG BACK ☐

b. TYPE OF WELL

OIL
WELL ☐GAS
WELL ☒

OTHER

SINGLE
ZONE ☒MULTIPLE
ZONE ☐

2. NAME OF OPERATOR

El Paso Natural Gas Company

3. ADDRESS OF OPERATOR

P.O. Box 289, Farmington, NM 87401

4. LOCATION OF WELL (Report location clearly and in accordance with any State requirements.)

At surface

1740'S, 1660'W

At proposed prod. zone

14. DISTANCE IN MILES AND DIRECTION FROM NEAREST TOWN OR POST OFFICE*

10 miles SE of Gobernador

15. DISTANCE FROM PROPOSED*

LOCATION TO NEAREST
PROPERTY OR LEASE LINE, FT.
(Also to nearest drlg. unit line, if any)

1660'

18. DISTANCE FROM PROPOSED LOCATION*
TO NEAREST WELL, DRILLING, COMPLETED,
OR APPLIED FOR, ON THIS LEASE, FT.

700'

16. NO. OF ACRES IN LEASE

Unit

19. PROPOSED DEPTH

6282'

17. NO. OF ACRES ASSIGNED
TO THIS WELL

W 320.00

20. ROTARY OR CABLE TOOLS

Rotary

21. ELEVATIONS (Show whether DF, RT, GR, etc.)

6800' GL

22. APPROX. DATE WORK WILL START*

23.

PROPOSED CASING AND CEMENTING PROGRAM

SIZE OF HOLE	SIZE OF CASING	WEIGHT PER FOOT	SETTING DEPTH	QUANTITY OF CEMENT
13 3/4"	9 5/8"	32.3#	200'	224 cf. to circ.
8 3/4"	7"	20#	4064'	296 cf. to cover Ojo Alamo
6 1/4"	4 1/2"	10.5#	6282'	413 cf. to circ. liner

Selectively perforate and sand water fracture the Mesa Verde formation.

A 3000 psi WP and 6000 psi test double gate preventer equipped with blind and pipe rams will be used for blow out prevention on this well.

This gas is dedicated.

The W/2 of Section 21 is dedicated to this well.

IN ABOVE SPACE DESCRIBE PROPOSED PROGRAM: If proposal is to deepen or plug back, give data on present productive zone and proposed new productive zone. If proposal is to drill or deepen directionally, give pertinent data on subsurface locations and measured and true vertical depths. Give blowout preventer program, if any.

24.

SIGNED

J. G. Guice

TITLE

Drilling Clerk

DATE

January 26, 1981

(This space for Federal or State office use)

PERMIT NO.

APPROVAL DATE

APPROVED BY

TITLE

CONDITIONS OF APPROVAL, IF ANY:

APPROVED
AS AMENDED

MAY 17 1982

Elliot
JAMES F. SIMS
DISTRICT ENGINEER

*See Instructions On Reverse Side

All distances must be from the outer boundaries of the Section.

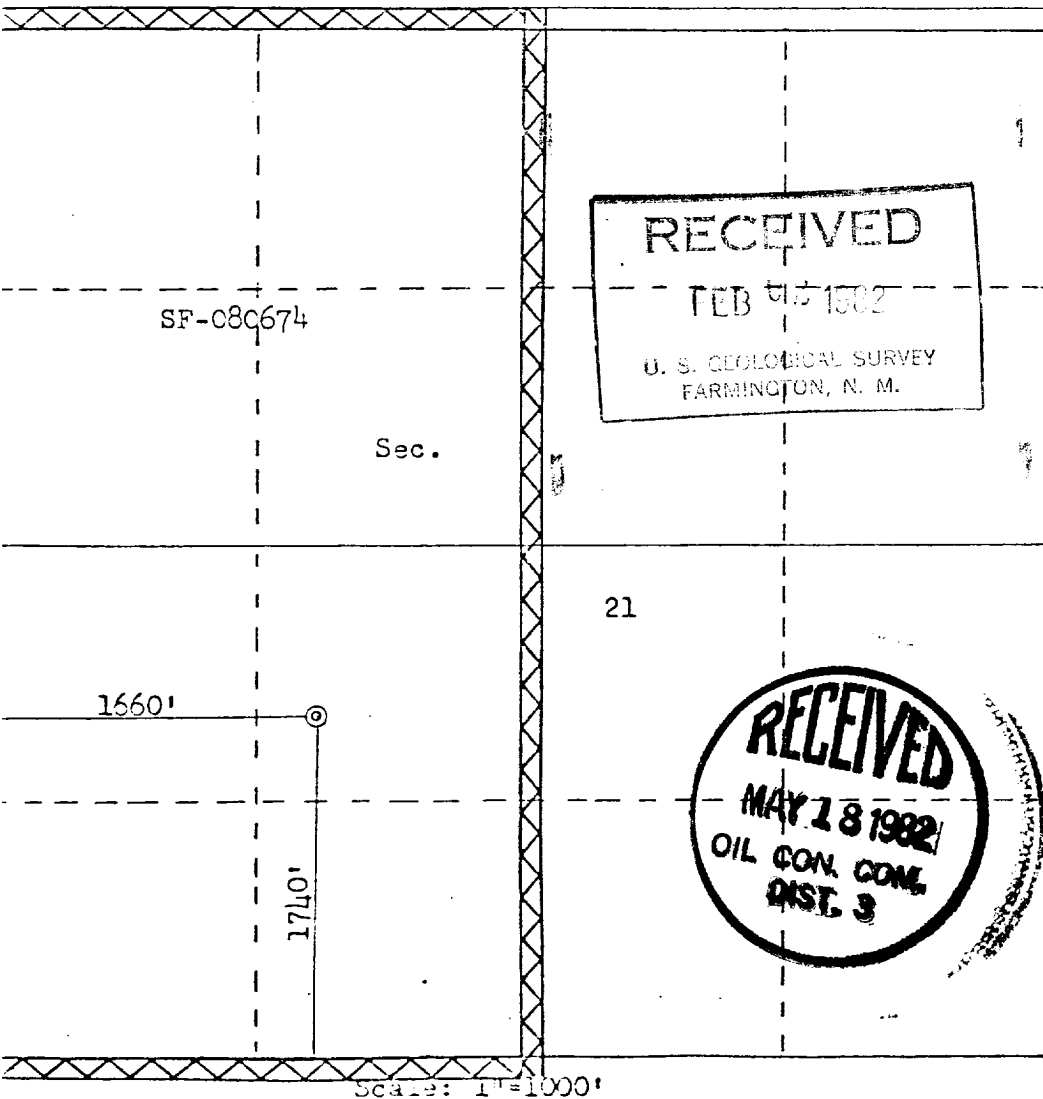
Operator EL PASO NATURAL GAS COMPANY			Lease SAN JUAN 27-4 UNIT (SF-080674)		Well No. 145
Unit Letter K	Section 21	Township 27N	Range 14W	County Rio Arriba	
Actual Footage Location of Well: 1740 feet from the South line and 1660 feet from the West line					
Ground Level Elev. 6800	Producing Formation MESA VERDE	Pool BLANCO MESA VERDE		Dedicated Acreage: 120.00 Acres	

1. Outline the acreage dedicated to the subject well by colored pencil or hatchure marks on the plat below.
2. If more than one lease is dedicated to the well, outline each and identify the ownership thereof (both as to working interest and royalty).
3. If more than one lease of different ownership is dedicated to the well, have the interests of all owners been consolidated by communitization, unitization, force-pooling, etc?

☒ Yes ☐ No If answer is "yes," type of consolidation Unitization

If answer is "no," list the owners and tract descriptions which have actually been consolidated. (Use reverse side of this form if necessary.)

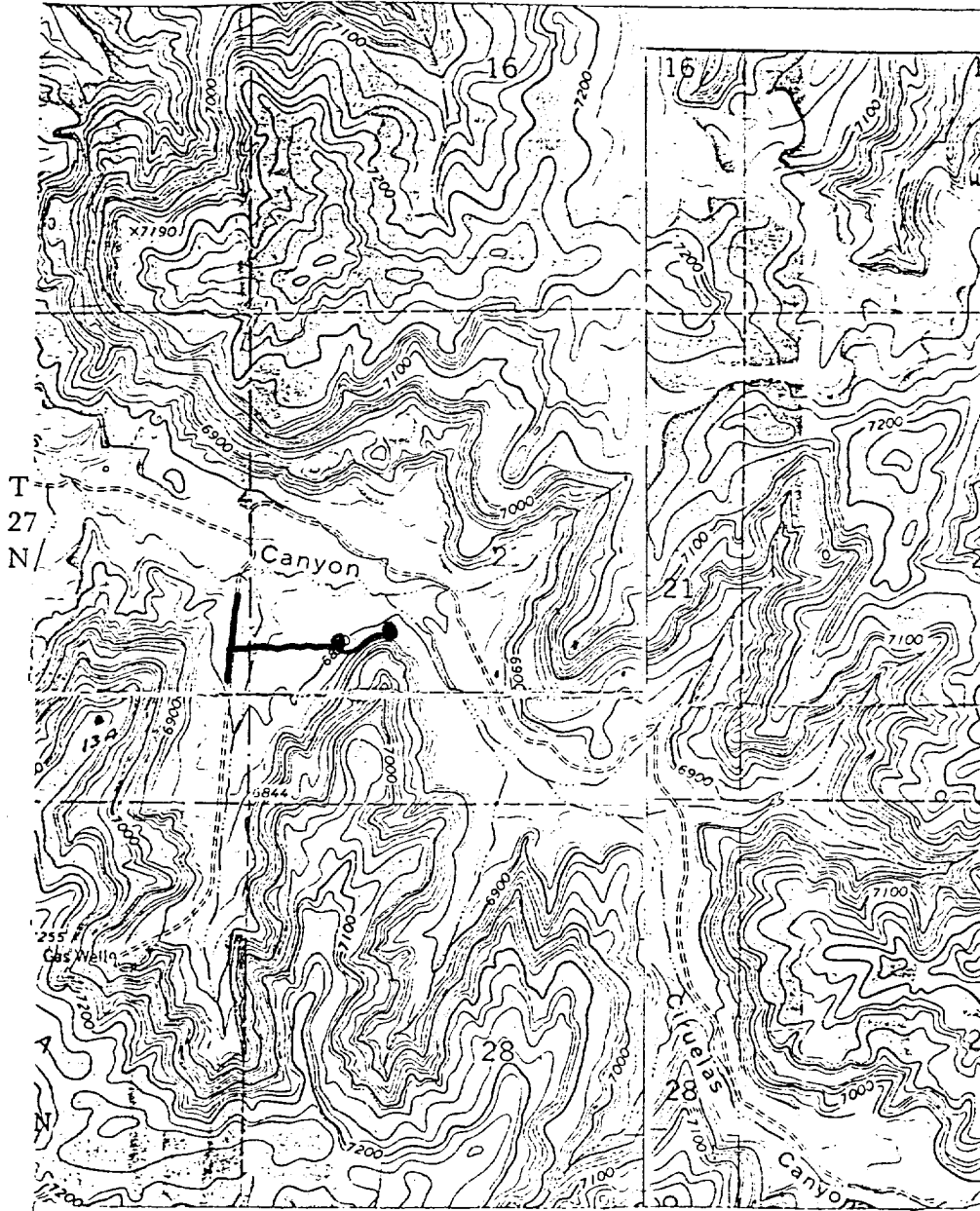
No allowable will be assigned to the well until all interests have been consolidated (by communitization, unitization, forced-pooling, or otherwise) or until a non-standard unit, eliminating such interests, has been approved by the Commission.



CERTIFICATION	
I hereby certify that the information contained herein is true and complete to the best of my knowledge and belief.	
Name	<u>N. G. Bues</u>
Position	<u>Drilling Clerk</u>
Company	<u>El Paso Natural Gas Company</u>
Date	<u>January 26, 1982</u>
I hereby certify that the well location shown on this plat was plotted from field notes of actual surveys made by me or under my supervision, and that the same is true and correct to the best of my knowledge and belief.	
Date Surveyed	<u>September 14, 1981</u>
Registered Professional Engineer and Land Surveyor	<u>Fred A. Kerr Jr.</u>
Certificate No.	<u>3950</u>

EL PASO NATURAL GAS COMPANY
 San Juan 27-4 Unit #145
 SW 21-27-4

R-4-W



MAP #1

LEGEND OF RIGHT-OF-WAYS

EXISTING ROADS	—
EXISTING PIPELINES	+ + +
EXISTING ROAD & PIPELINE	+++
PROPOSED ROADS	—
PROPOSED PIPELINES	+ + +
PROPOSED ROAD & PIPELINE	+++