

UNITED STATES
DEPARTMENT OF THE INTERIOR
GEOLOGICAL SURVEY

APPLICATION FOR PERMIT TO DRILL, DEEPEN, OR PLUG BACK

1a. TYPE OF WORK
DRILL ☒ DEEPEN ☐ PLUG BACK ☐

b. TYPE OF WELL
OIL WELL ☐ GAS WELL ☒ OTHER ☐ SINGLE ZONE ☐ MULTIPLE ZONE ☐

2. NAME OF OPERATOR
El Paso Natural Gas Company

3. ADDRESS OF OPERATOR
PO Box 4289, Farmington, NM 87499

4. LOCATION OF WELL (Report location clearly and in accordance with any State requirements.)
At surface 1900'S, 888'W
At proposed prod. zone

14. DISTANCE IN MILES AND DIRECTION FROM NEAREST TOWN OR POST OFFICE
9.5 miles South of Gobernador, NM

15. DISTANCE FROM PROPOSED*
LOCATION TO NEAREST
PROPERTY OR LEASE LINE, FT.
(Also to nearest drlg. unit line, if any) 888'

16. NO. OF ACRES IN LEASE
Unit

17. NO. OF ACRES ASSIGNED
TO THIS WELL
320.00

18. DISTANCE FROM PROPOSED LOCATION*
TO NEAREST WELL, DRILLING, COMPLETED,
OR APPLIED FOR, ON THIS LEASE, FT.
2000'

19. PROPOSED DEPTH
6115'

20. ROTARY OR CABLE TOOLS
Rotary

21. ELEVATIONS (Show whether DF, RT, GR, etc.)
6691' GL

22. APPROX. DATE WORK WILL START*

23. DRILLING OPERATIONS ANTICIPATED AND
SUBJECT TO CEMENTING PROGRAM
This action is subject to administrative
appeal pursuant to 30 CFR 290.

| SIZE OF HOLE | SIZE OF CASING | WEIGHT PER FOOT | SETTING DEPTH | QUANTITY OF CEMENT |
|--------------|----------------|-----------------|---------------|------------------------|
| 13 3/4" | 9 5/8" | 32.3# | 200' | 190 cf- circulated |
| 8 3/4" | 7" | 20 # | 3805' | 280 cf-cover Ojo Alamo |
| 6 1/4" | 4 1/2" | 10.5# | 3655-6115' | 431 cf-circ.liner top |

Selectively perforate and sandwater fracture the Mesa Verde formation.

A 3000 psi WP and 6000 psi test double gate preventor equipped with blind
and pipe rams will be used for blow out prevention on this well.

This gas is dedicated.

The W/2 of Section 15 is dedicated to this well.

IN ABOVE SPACE DESCRIBE PROPOSED PROGRAM: If proposal is to deepen or plug back, give data on present productive zone and proposed new productive
zone. If proposal is to drill or deepen directionally, give pertinent data on subsurface locations and measured and true vertical depths. Give blowout
preventer program, if any.

24.

SIGNED

Dora G. Duico

TITLE

Drilling Clerk

DATE

8-11-83

(This space for Federal or State office use)

PERMIT NO.

APPROVAL DATE

APPROVED BY

TITLE

CONDITIONS OF APPROVAL, IF ANY:

*See Instructions On Reverse Side

111900

RECEIVED
OIL CON. DIV.
DEC 11 1983
APPROVED
AS AMENDED
DEC 11 1983
R. B. [Signature]
AREA MANAGER
FARMINGTON RESOURCE AREA

All distances must be from the outer boundaries of the Section.

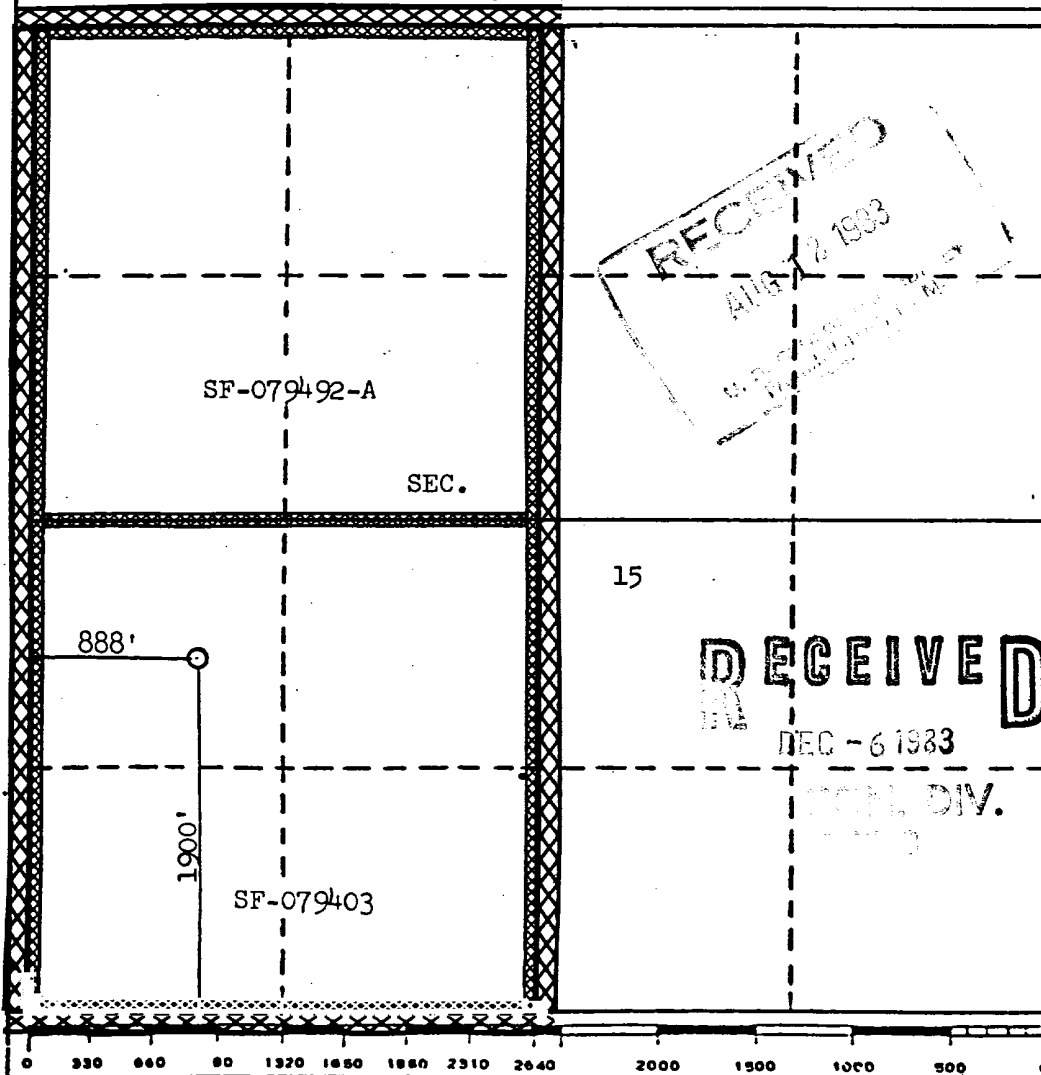
| | | | | | |
|---|----------------------------------|------------------|---|----------------------|------------------------------------|
| Operator EL PASO NATURAL GAS COMPANY | | | Lease SAN JUAN 27-5 UNIT (SF-079403) | | Well No. 196 |
| Unit Letter L | Section 15 | Township 27-N | Range 5-W | County RIO ARriba | |
| Actual Footage Location of Well: 1900 feet from the SOUTH line and 888 feet from the WEST line | | | | | |
| Ground Level Elev. 6691 | Producing Formation MESAVERDE | | Pool BLANCO MESAVERDE | | Dedicated Acreage: 320.00 Acres |

1. Outline the acreage dedicated to the subject well by colored pencil or hachure marks on the plat below.
2. If more than one lease is dedicated to the well, outline each and identify the ownership thereof (both as to working interest and royalty).
3. If more than one lease of different ownership is dedicated to the well, have the interests of all owners been consolidated by communitization, unitization, force-pooling, etc?

☒ Yes ☐ No If answer is "yes," type of consolidation Unitization

If answer is "no," list the owners and tract descriptions which have actually been consolidated. (Use reverse side of this form if necessary.)

No allowable will be assigned to the well until all interests have been consolidated (by communitization, unitization, forced-pooling, or otherwise) or until a non-standard unit, eliminating such interests, has been approved by the Division
REISSUED TO SHOW WELL NO., FORMATION & DEDICATION CHANGES 8/8/83 (WAS WELL NO. 108E)



CERTIFICATION

I hereby certify that the information contained herein is true and complete to the best of my knowledge and belief.

A. G. Guisco

Name
Drilling Clerk

Position
El Paso Natural Gas Co.

Company
August 12, 1983

Date

I hereby certify that the well location shown on this plat was plotted from field notes of actual surveys made by me or under my supervision, and that the same is true and correct to the best of my knowledge and belief.

Date Surveyed
November 18, 1974

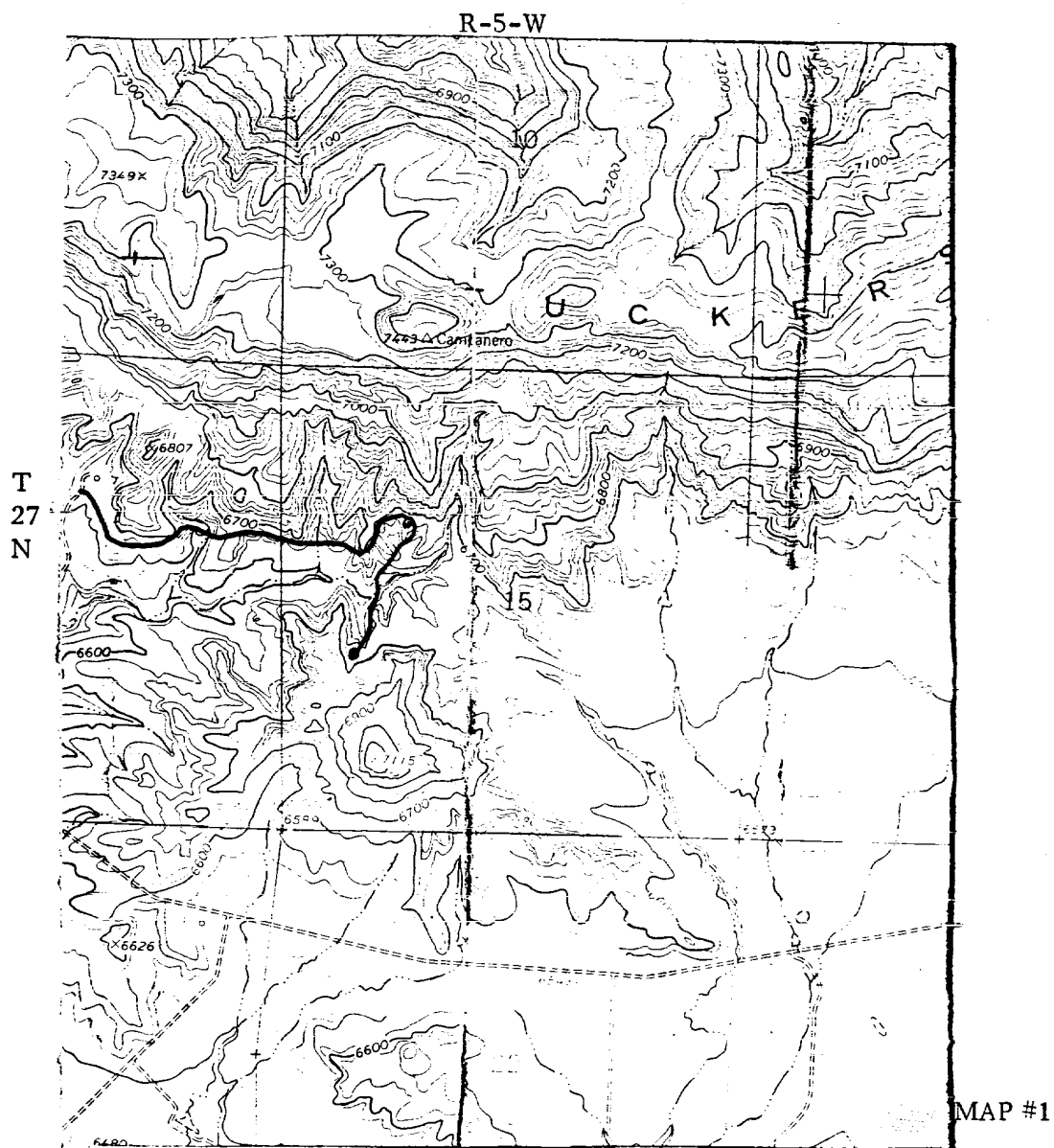
Registered Professional Engineer
and of Land Surveyor

David Wilcox
Certificate No. 1760

EL PASO NATURAL GAS COMPANY

San Juan 27-5 Unit #108E

SW 15-27-5



LEGEND OF RIGHT-OF-WAYS

EXISTING ROADS

EXISTING PIPELINES

EXISTING ROAD & PIPELINE

PROPOSED ROADS

PROPOSED PIPELINES

PROPOSED ROAD & PIPELINE

