

UNITED STATES  
DEPARTMENT OF THE INTERIOR  
GEOLOGICAL SURVEY

## APPLICATION FOR PERMIT TO DRILL, DEEPEN, OR PLUG BACK

## 1a. TYPE OF WORK

DRILL ☒DEEPEN ☐PLUG BACK ☐

## b. TYPE OF WELL

OIL  
WELL ☐GAS  
WELL ☒

OTHER

SINGLE  
ZONE ☐MULTIPLE  
ZONE ☐

## 2. NAME OF OPERATOR

El Paso Natural Gas Company

## 3. ADDRESS OF OPERATOR

PO Box 4289, Farmington, NM 87499

## 4. LOCATION OF WELL (Report location clearly and in accordance with any State requirements.)\*

At surface

1900'S, 888'W

At proposed prod. zone

## 14. DISTANCE IN MILES AND DIRECTION FROM NEAREST TOWN OR POST OFFICE\*

9.5 miles South of Gobernador, NM

## 15. DISTANCE FROM PROPOSED\*

LOCATION TO NEAREST  
PROPERTY OR LEASE LINE, FT.  
(Also to nearest drlg. unit line, if any)

888'

## 16. NO. OF ACRES IN LEASE

Unit

## 18. DISTANCE FROM PROPOSED LOCATION\*

TO NEAREST WELL, DRILLING, COMPLETED,  
OR APPLIED FOR, ON THIS LEASE, FT.

2000'

## 19. PROPOSED DEPTH

6115'

## 21. ELEVATIONS (Show whether DF, RT, GR, etc.)

6691' GL

## 23.

DRILLING OPERATIONS AUTHORIZED AND  
SUSPENDED BY THE GEOLOGICAL SURVEY  
REVENUE CASING AND CEMENTING PROGRAM17. NO. OF ACRES ASSIGNED  
TO THIS WELL

W 320.00

## 20. ROTARY OR CABLE TOOLS

Rotary

## 22. APPROX. DATE WORK WILL START\*

This action is subject to administrative  
approval pursuant to 50 CFR 290.

SIZE OF HOLE	SIZE OF CASING	WEIGHT PER FOOT	SETTING DEPTH
13 3/4"	9 5/8"	32.3#	200'
8 3/4"	7"	20 #	3805'
6 1/4"	4 1/2"	10.5#	3655-6115'

QUANTITY OF CEMENT  
190 cf- circulated  
280 cf-cover Ojo Alamo  
431 cf-circ.liner top

Selectively perforate and sandwater fracture the Mesa Verde formation.

A 3000 psi WP and 6000 psi test double gate preventor equipped with blind  
and pipe rams will be used for blow out prevention on this well.

This gas is dedicated.

The W/2 of Section 15 is dedicated to this well.

IN ABOVE SPACE DESCRIBE PROPOSED PROGRAM: If proposal is to deepen or plug back, give data on present productive zone and proposed new productive  
zone. If proposal is to drill or deepen directionally, give pertinent data on subsurface locations and measured and true vertical depths. Give blowout  
preventer program, if any.

24.

SIGNED

*Lora G. Quico*

TITLE

Drilling Clerk

DATE

8-11-83

(This space for Federal or State office use)

PERMIT NO.

APPROVAL DATE

APPROVED BY

TITLE

CONDITIONS OF APPROVAL, IF ANY:

\*See Instructions On Reverse Side

APPROVED

AS AMENDED

DEC 02 1983

R. B. [Signature]  
AREA MANAGER  
FARMINGTON RESOURCE AREA

All distances must be from the outer boundaries of the Section.

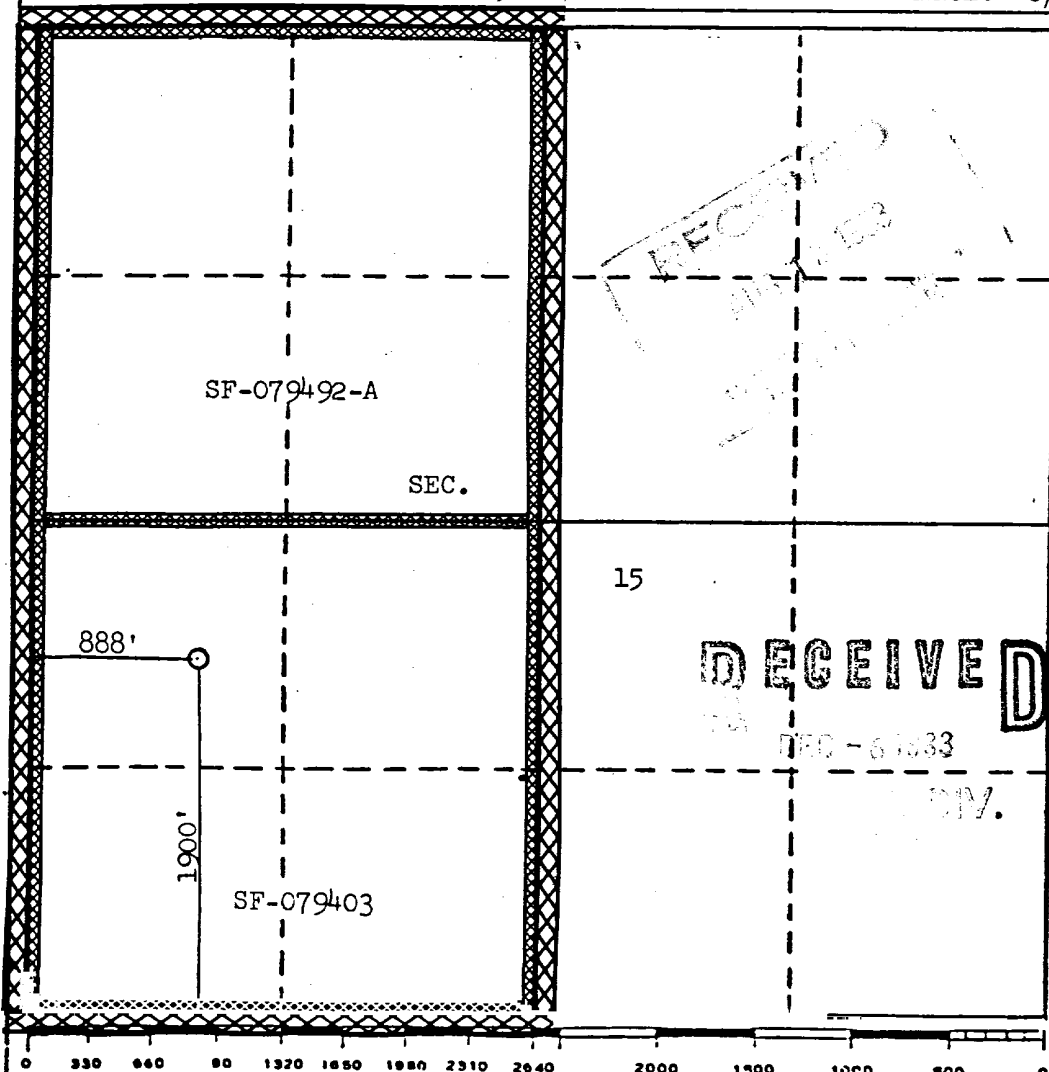
Operator EL PASO NATURAL GAS COMPANY			Lease SAN JUAN 27-5 UNIT (SF-079403)		Well No. 196
Unit Letter L	Section 15	Township 27-N	Range 5-W	County RIO ARRIBA	
Actual Footage Location of Well: 1900 feet from the SOUTH line and 888 feet from the WEST line					
Ground Level Elev. 6691	Producing Formation MESAVERDE		Pool BLANCO MESAVERDE	Dedicated Acreage: 320.00 Acres	

1. Outline the acreage dedicated to the subject well by colored pencil or hachure marks on the plat below.
2. If more than one lease is dedicated to the well, outline each and identify the ownership thereof (both as to working interest and royalty).
3. If more than one lease of different ownership is dedicated to the well, have the interests of all owners been consolidated by communitization, unitization, force-pooling, etc?

☒ Yes ☐ No If answer is "yes," type of consolidation Unitization

If answer is "no," list the owners and tract descriptions which have actually been consolidated. (Use reverse side of this form if necessary.)

No allowable will be assigned to the well until all interests have been consolidated (by communitization, unitization, forced-pooling, or otherwise) or until a non-standard unit, eliminating such interests, has been approved by the Division  
REISSUED TO SHOW WELL NO., FORMATION & DEDICATION CHANGES 8/8/83 (WAS WELL NO. 108E)



CERTIFICATION

I hereby certify that the information contained herein is true and complete to the best of my knowledge and belief.

*A. G. Guisco*

Name  
Drilling Clerk

Position  
El Paso Natural Gas Co.

Company  
August 12, 1983

Date

I hereby certify that the well location shown on this plat was plotted from field notes of actual surveys made by me or under my supervision, and that the same is true and correct to the best of my knowledge and belief.

Date Surveyed  
November 18, 1974

Registered Professional Engineer  
and/or Land Surveyor

*David Wilkins*

Certificate No.

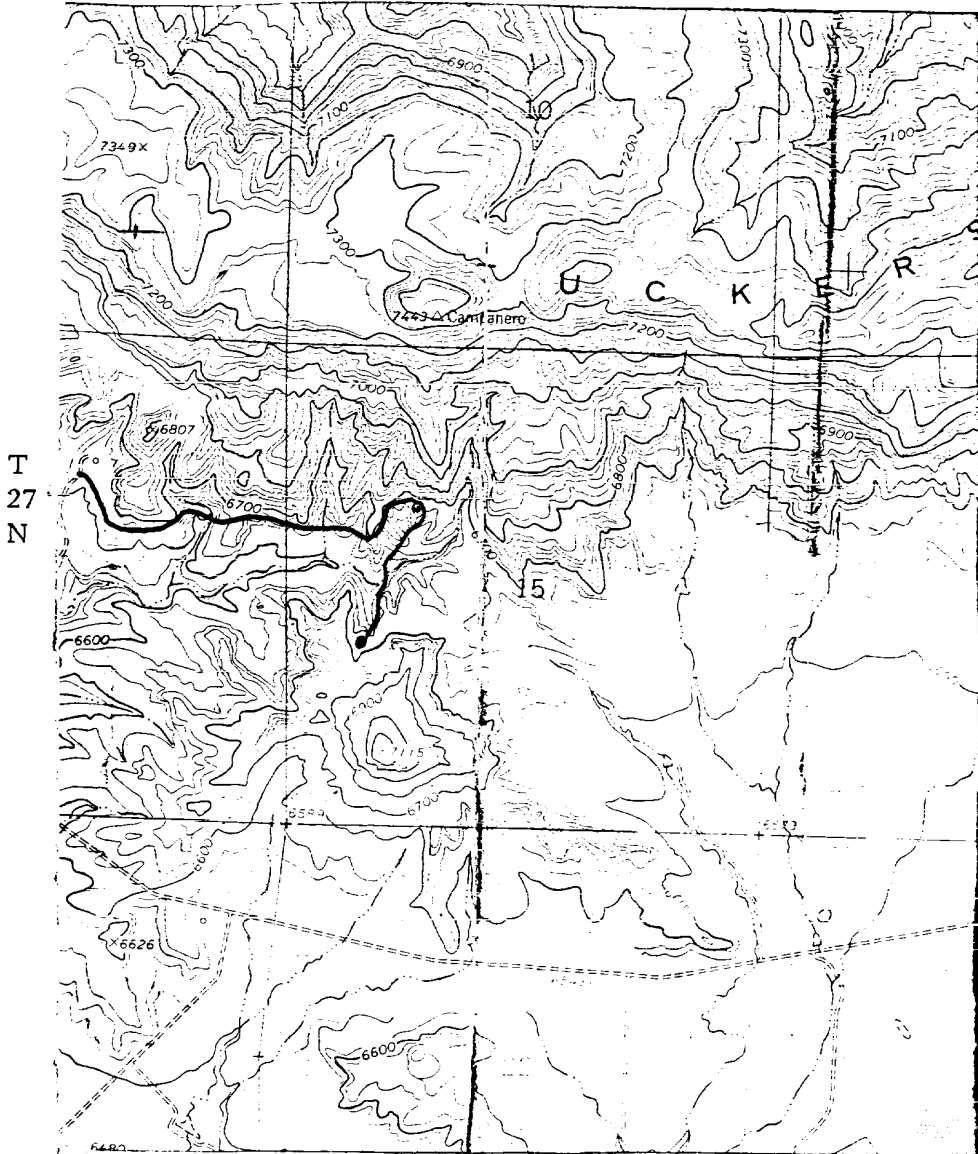
1760

# EL PASO NATURAL GAS COMPANY

San Juan 27-5 Unit #108E

SW 15-27-5

R-5-W



MAP #1

## LEGEND OF RIGHT-OF-WAYS

EXISTING ROADS

EXISTING PIPELINES

EXISTING ROAD & PIPELINE

PROPOSED ROADS

PROPOSED PIPELINES

PROPOSED ROAD & PIPELINE

