

UNITED STATES
DEPARTMENT OF THE INTERIOR
GEOLOGICAL SURVEY

APPLICATION FOR PERMIT TO DRILL, DEEPEN, OR PLUG BACK

1a. TYPE OF WORK
DRILL ☒ DEEPEN ☐ PLUG BACK ☐b. TYPE OF WELL
OIL WELL ☐ GAS WELL ☐ OTHER ☐ SINGLE ZONE ☐ MULTIPLE ZONE ☐

2. NAME OF OPERATOR

CONSOLIDATED OIL & GAS, INC.

3. ADDRESS OF OPERATOR

PO Box 2038, Farmington, NM 87499

4. LOCATION OF WELL (Report location clearly and in accordance with any State requirements.)

At surface
1744' FSL & 1530' FEL

At proposed prod. zone

same

BUREAU OF LAND MANAGEMENT

14. DISTANCE IN MILES AND DIRECTION FROM NEAREST TOWN OR POST OFFICE TO PROPOSED WELL LOCATION

35 miles north of Lindreth, N.M.

15. DISTANCE FROM PROPOSED*

LOCATION TO NEAREST
PROPERTY OR LEASE LINE, FT.
(Also to nearest drig. unit line, if any)

1530'

16. NO. OF ACRES IN LEASE

320 1280

17. NO. OF ACRES ASSIGNED
TO THIS WELL

160 5/320

18. DISTANCE FROM PROPOSED LOCATION*
TO NEAREST WELL, DRILLING, COMPLETED,
OR APPLIED FOR, ON THIS LEASE, FT.

2900

19. PROPOSED DEPTH

8320

20. ROTARY OR CABLE TOOLS

rotary

21. ELEVATIONS (Show whether DF, RT, GR, etc.)

7064' GR

DRILLING OPERATIONS AUTHORIZED ARE
SUBJECT TO COMPLIANCE WITH ATTACHED
"GENERAL REQUIREMENTS"

This action is subject to administrative

appeal pursuant to 30 CFR 290.

23.

PROPOSED CASING AND CEMENTING PROGRAM

SIZE OF HOLE	SIZE OF CASING	WEIGHT PER FOOT	SETTING DEPTH	QUANTITY OF CEMENT
15-1/2"	10-3/4"	40.5#	350'	350 ft ³ circ to surf
9-7/8"	7-5/8"	26.4#	4190'	375 ft ³
6-3/4"	5-1/2"	15.5 & 17#	3990-8320'	420 ft ³

- 1) Drill 15-1/2" hole to 250', run & cmt 10-3/4" csg. Circ cmt to surf, WOC 12 hrs.
- 2) Install casinghead & BOPs. Pressure test to 1500 psi.
- 3) Drill 9-7/8" hole to 4190'. Run and cement intermedicate string.
- 4) Air or gas drill 6-3/4" hole to TD. Run electric & radioactive logs.
- 5) Run production casing liner and cement.
- 6) Perforate Dakota formation, stimulate and complete as required by regulations.

RECEIVED

AUG 21 1984

OIL CON. DIV.

IN ABOVE SPACE DESCRIBE PROPOSED PROGRAM: If proposal is to deepen or plug back, give data on present productive zone and proposed new productive zone. If proposal is to drill or deepen directionally, give pertinent data on subsurface locations and measured and true vertical depths. Give blowout preventer program, if any.

24.

SIGNED

TITLE Drilling Foreman

(This space for Federal or State office use)

PERMIT NO.

APPROVAL DATE

APPROVED BY

TITLE

CONDITIONS OF APPROVAL, IF ANY:

ak

*See Instructions On Reverse Side
NMOCC

DATE 8-8-84
APPROVED
AS AMENDED
AUG 20 1984
JOHN S. McKEE
ASST. AREA MANAGER
FARMINGTON RESOURCE AREA

All distances must be from the outer boundaries of the Section.

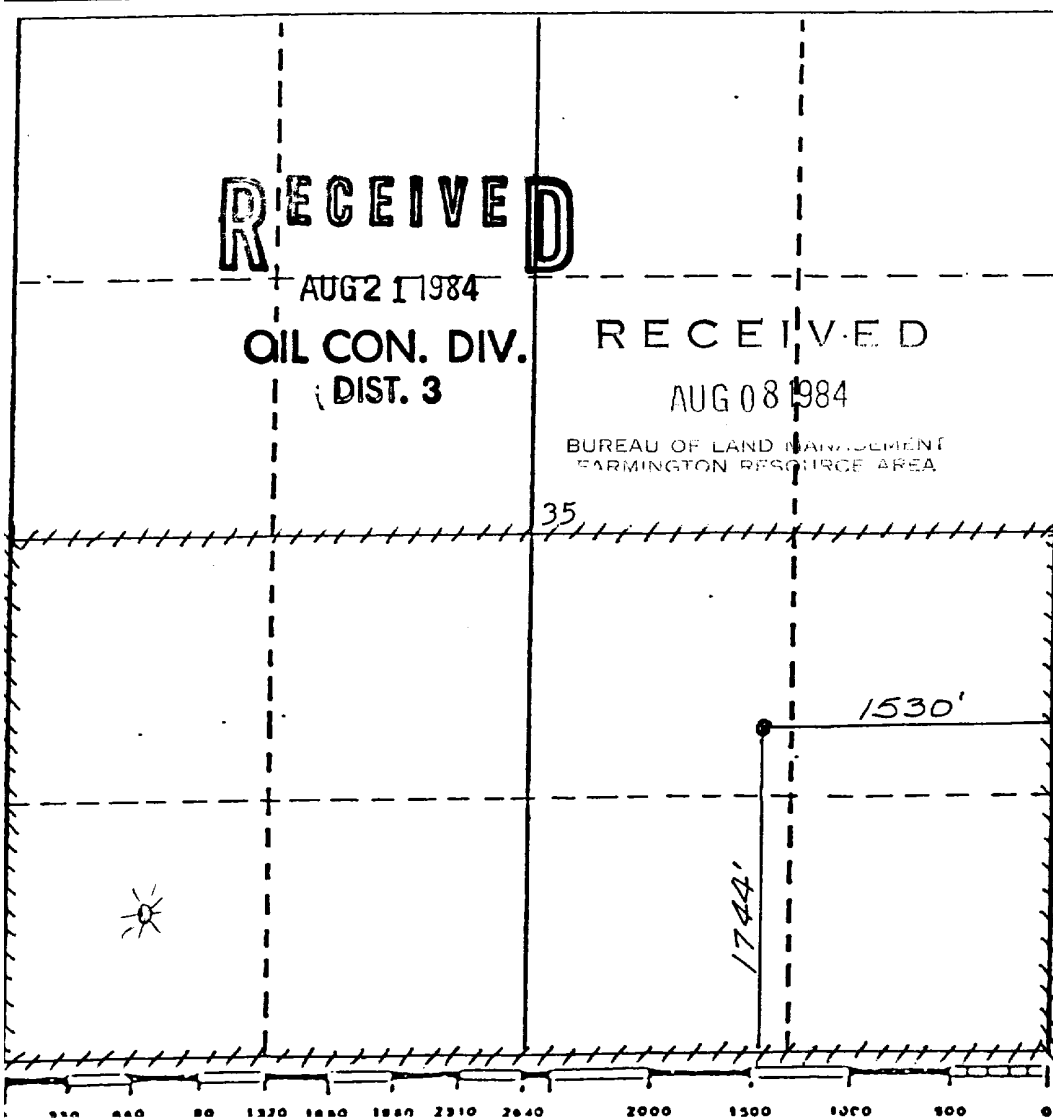
Operator CONSOLIDATED OIL & GAS, INC.			Lease CHAMPLIN		Well No. 1E
Unit Letter J	Section 35	Township 27 NORTH	Range 4 WEST	County RIO ARriba	
Actual Footage Location of Well: 1744 feet from the SOUTH line and 1530 feet from the EAST line					
Ground Level Elev. 7064	Producing Formation Dakota	Pool Basin Dakota		Dedicated Acreage: 320 Acres	

1. Outline the acreage dedicated to the subject well by colored pencil or hatchure marks on the plat below.
2. If more than one lease is dedicated to the well, outline each and identify the ownership thereof (both as to working interest and royalty).
3. If more than one lease of different ownership is dedicated to the well, have the interests of all owners been consolidated by communitization, unitization, force-pooling, etc?

☐ Yes ☐ No If answer is "yes," type of consolidation _____

If answer is "no," list the owners and tract descriptions which have actually been consolidated. (Use reverse side of this form if necessary.) _____

No allowable will be assigned to the well until all interests have been consolidated (by communitization, unitization, forced-pooling, or otherwise) or until a non-standard unit, eliminating such interests, has been approved by the Division



CERTIFICATION

I hereby certify that the information contained herein is true and complete to the best of my knowledge and belief.

Barbara W. Nick
Name

Engineering Ass't

Position

Consolidated Oil & Gas, Inc.

Company

8-7-84

Date

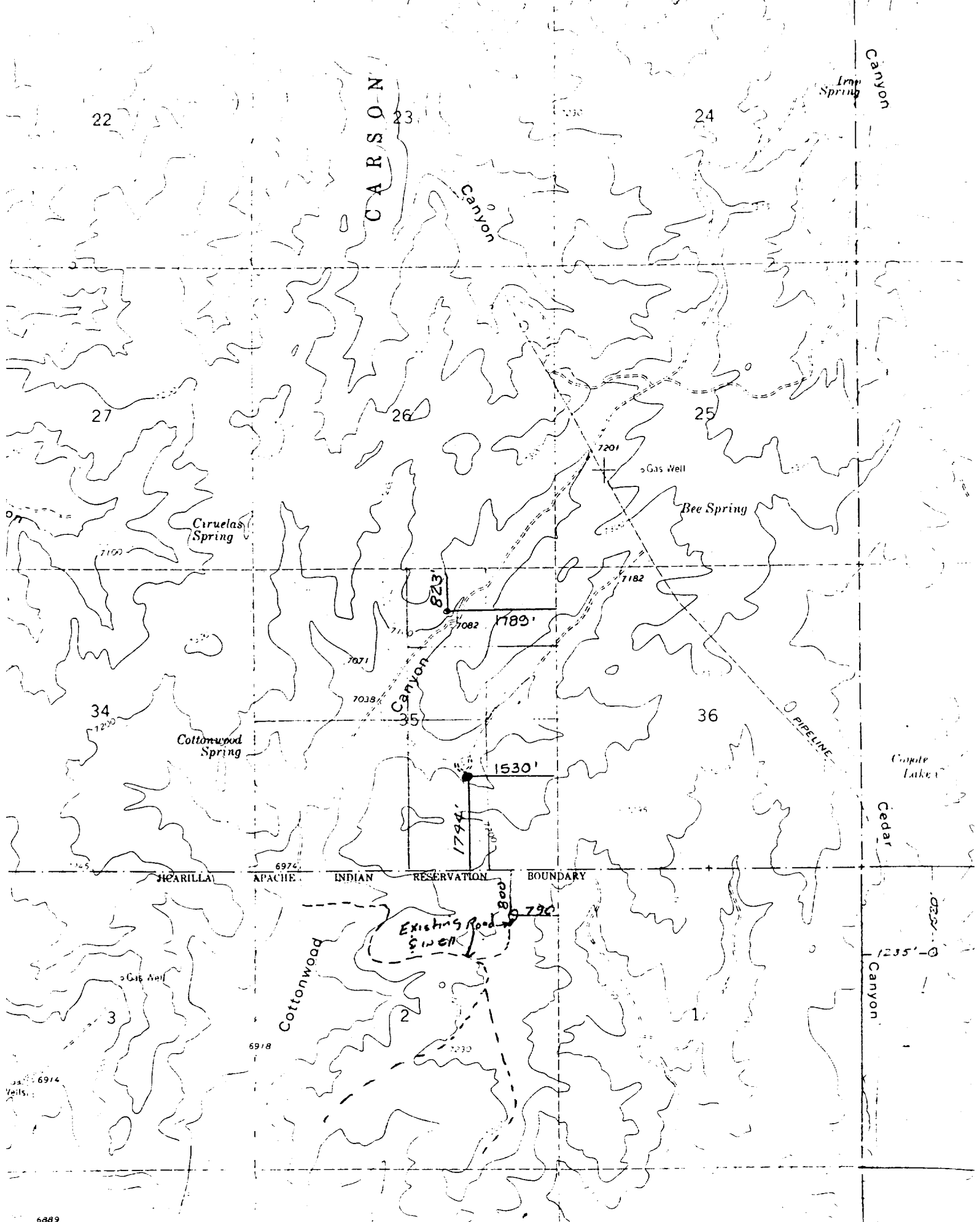
I hereby certify that the well location shown on this plat was plotted from field notes of actual surveys made by me or under my supervision, and that the same are true and correct to the best of my knowledge and belief.

Michael Daly
Date Surveyed
April 17, 1984

Registered Professional Engineer
and/or Land Surveyor

Michael Daly

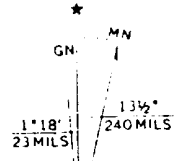
Certificate No.
5992



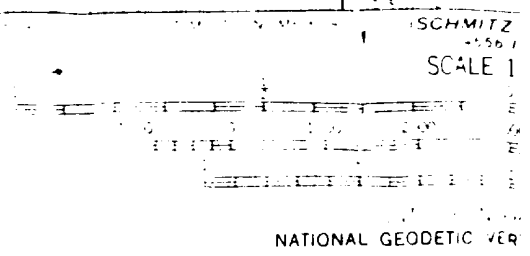
ATTACHMENT "A"
CONSOLIDATED OIL & GAS, INC.
Champlin #1E
NW 1/4 Sec. 35, T27N, R4W, N.M.P.M.,
Rio Arriba County, New Mexico

and published by the Geological Survey

topographic methods from aerial
1958 and 1962. Field checked 1963
North American datum
New Mexico coordinate system
Meridian grid lines



UTM GRID AND 1963 MAGNETIC NORTH
DECLINATION AT CENTER OF SHEET



THIS MAP COMPIES WITH NATIONAL
FOR SALE BY U.S. GEOLOGICAL SURVEY, DENVER,
A FOLDER DESCRIBING TOPOGRAPHIC MAPS

