

UNITED STATES
DEPARTMENT OF THE INTERIOR
BUREAU OF LAND MANAGEMENT

APPLICATION FOR PERMIT TO DRILL, DEEPEN, OR PLUG BACK

1A. TYPE OF WORK

DRILL ☒

DEEPEN ☐

PLUG BACK ☐

B. TYPE OF WELL

OIL
WELL ☐

GAS
WELL ☒

OTHER

SINGLE
ZONE ☐

MULTIPLE
ZONE ☒

2. NAME OF OPERATOR

Caulkins Oil Company

3. ADDRESS OF OPERATOR

P.O. Box 780 Farmington, New Mexico 87499

4. LOCATION OF WELL (Report location clearly and in accordance with any State requirements.)

At surface

990' From North & 990' From West

At proposed prod. zone

Same

14. DISTANCE IN MILES AND DIRECTION FROM NEAREST TOWN OR POST OFFICE*

32 Miles Southeast of Blanco New Mexico

16. DISTANCE FROM PROPOSED*

LOCATION TO NEAREST

PROPERTY OR LEASE LINE, FT.

(Also to nearest drilg. unit line, if any)

990'

18. DISTANCE FROM PROPOSED LOCATION*

TO NEAREST WELL, DRILLING, COMPLETED,

OR APPLIED FOR, ON THIS LEASE, FT.

500'

21. ELEVATIONS (Show whether DF, RT, GR, etc.)

6577 Gr.

DRILLING OPERATIONS AUTHORIZED ARE
SUBJECT TO COMPLIANCE WITH ATTACHED

PROPOSED CASING AND CEMENTING PROGRAM
GENERAL REQUIREMENTS

23.

SIZE OF HOLE	SIZE OF CASING	WEIGHT PER FOOT	SETTING DEPTH	QUANTITY OF CEMENT
12 3/4"	9 5/8"	32.3#	400'	Sufficient to circulate 300 Cu.Ft
7 7/8"	5 1/2"	15.5 & 17#	7500'	3 Stages - 2000 Cu.Ft. Total

Surface formation San Jose. No abnormal pressure or temperature anticipated.

It is proposed to drill new hole, surface to 7500' using 9.0 Gel based mud. Float will be run in drill pipe at bit. ES Induction and Density Logs will be run.

A Schaeffer 10" Model LWP 6000# test BOP will be in use at all times while drilling below surface casing. BOP will be tested at least one time during each 24 hour period and results recorded on daily drilling report.

New 9 5/8" 32.30# H-40 8rd thd, short collars surface casing will be set at approx 400' and cemented with sufficient cement to circulate to surface.

New 5 1/2" 15.5 & 17# K-55 short and long collar 8rd thd Smls casing will be cemented top to bottom in 3 stages. First stage thru shoe with 412.50 Cu.Ft.

50-50 Poz, 6% Gel, 12 1/4# Gilsomite per sack followed by 118 Cu.Ft. Neat Cement.

IN ABOVE SPACE DESCRIBE PROPOSED PROGRAM: If proposal is to deepen or plug back, give data on present productive zone and proposed new productive zone. If proposal is to drill or deepen directionally, give pertinent data on subsurface locations and measured and true vertical depths. Give blowout preventer program, if any.

24.

SIGNED <i>Charles E. [Signature]</i>	TITLE Superintendent	APPROVED <i>[Signature]</i> DATE 12/13/84
(This space for Federal or State office use)		AS AMENDED
PERMIT NO. _____	APPROVAL DATE _____	DEC 12 1984
APPROVED BY <i>[Signature]</i>	TITLE _____	DATE _____
CONDITIONS OF APPROVAL, IF ANY: <i>Oil Con. Div. DIST. 3</i>		AREA MANAGER FARMINGTON RESOURCE AREA

NMOCC

*See Instructions On Reverse Side

Title 18 U.S.C. Section 1001, makes it a crime for any person knowingly and willfully to make to any department or agency of the United States any false, fictitious or fraudulent statements or representations as to any matter within its jurisdiction.

Second stage thru tool set at approx 5500' with 412.5 Cu.Ft. 50 50 Poz, 6% Gel, 12 1/4# Gilsonite per sack followed by 118 Cu.Ft. Neat Cement.

Third stage thru tool set at approx 3500' with 825 Cu.Ft. 50 50 Poz, 6% Gel, 12 1/4# Gilsonite per sack followed by 118 Cu.Ft. Neat Cement.

Centralizers will be run on casing thru Mesa Verde and Dakota Zones.

Well will be completed in Mesa Verde and Dakota Zones.

All Zones will be perforated and fractured to stimulate production.

Packer will be set between Mesa Verde and Dakota Zones.

New 1 1/2" EUE 2.90# V-55 10rd thd Smls tubing will be run thru Packer to Dakota Zone.

New 1 1/4" NU 2.33# V-55 10rd thd Smls tubing will be run for Mesa Verde production.

Gas produced from this well contracted to Gas Company of New Mexico.

Estimated Formation Tops:

Alamo	2460'
Pictured Cliffs	3045'
Chacra	4050'
Mesa Verde	4865'
Graneros	7278'
Dakota	7402'

All distances must be from the outer boundaries of the Section.

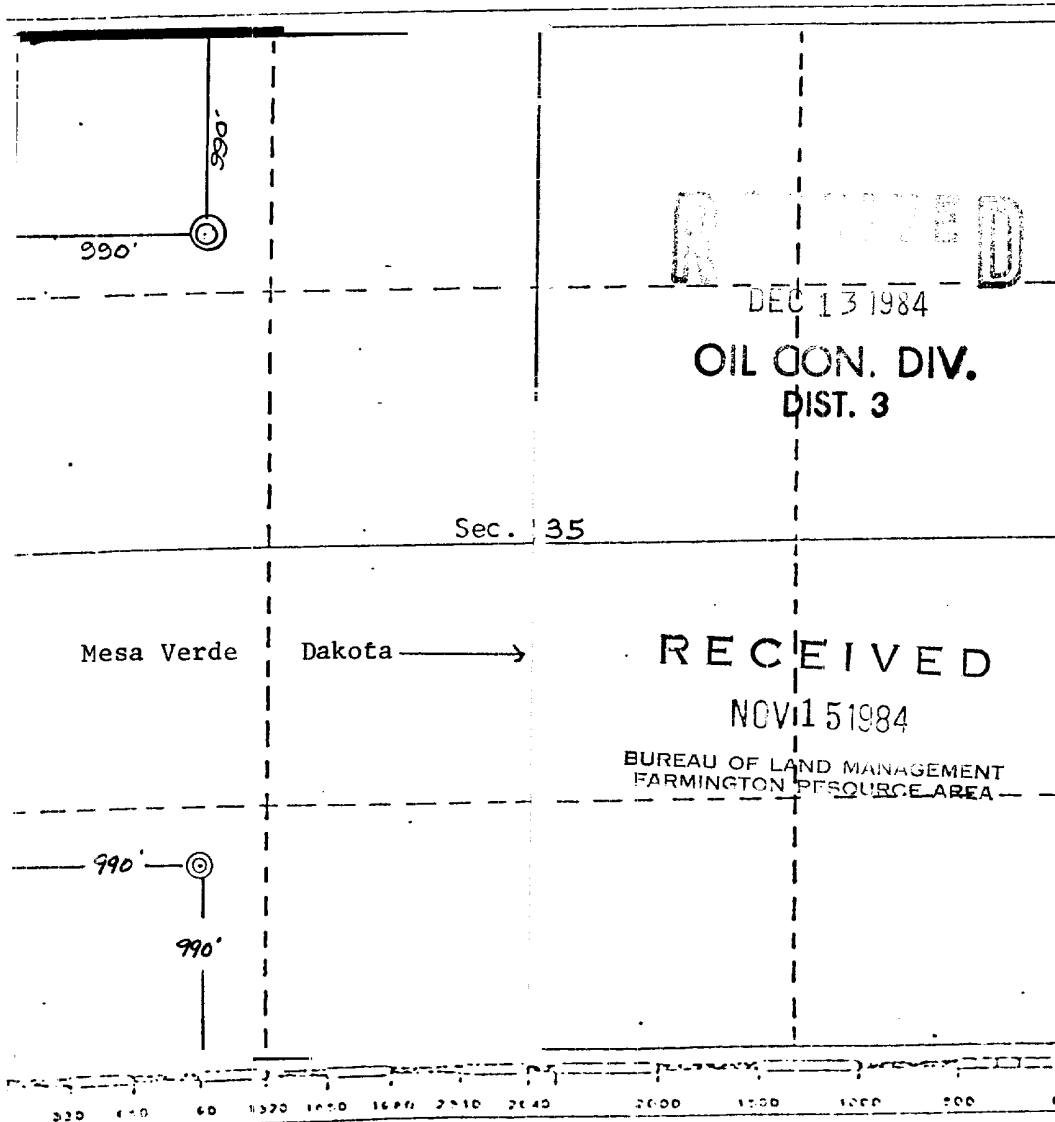
Operator CAULKINS OIL COMPANY		Lease BREECH F		Well No. 45-M
Unit Letter D	Section 35	Township 27 NORTH	Range 6 WEST	County RIO ARRIBA
Actual Well Location of Well:				
990 feet from the NORTH line and		990 feet from the WEST line		
Ground Level Elev. 6577	Producing Formation Mesa Verde - Dakota	Pool Blanco Mesa Verde - Basin Dakota		Dedicated Acreage: 320 Infil Acres

1. Outline the acreage dedicated to the subject well by colored pencil or hatchure marks on the plat below.
2. If more than one lease is dedicated to the well, outline each and identify the ownership thereof (both as to working interest and royalty).
3. If more than one lease of different ownership is dedicated to the well, have the interests of all owners been consolidated by communitization, unitization, force-pooling, etc?

☐ Yes ☐ No If answer is "yes," type of consolidation _____

If answer is "no," list the owners and tract descriptions which have actually been consolidated. (Use reverse side of this form if necessary.) _____

No allowable will be assigned to the well until all interests have been consolidated (by communitization, unitization, forced-pooling, or otherwise) or until a non-standard unit, eliminating such interests, has been approved by the Division.



CERTIFICATION

I hereby certify that the information contained herein is true and complete to the best of my knowledge and belief.

Charles E. Verquer
Name

Charles E. Verquer

Position

Superintendent

Company

Caulkins Oil Company

Date

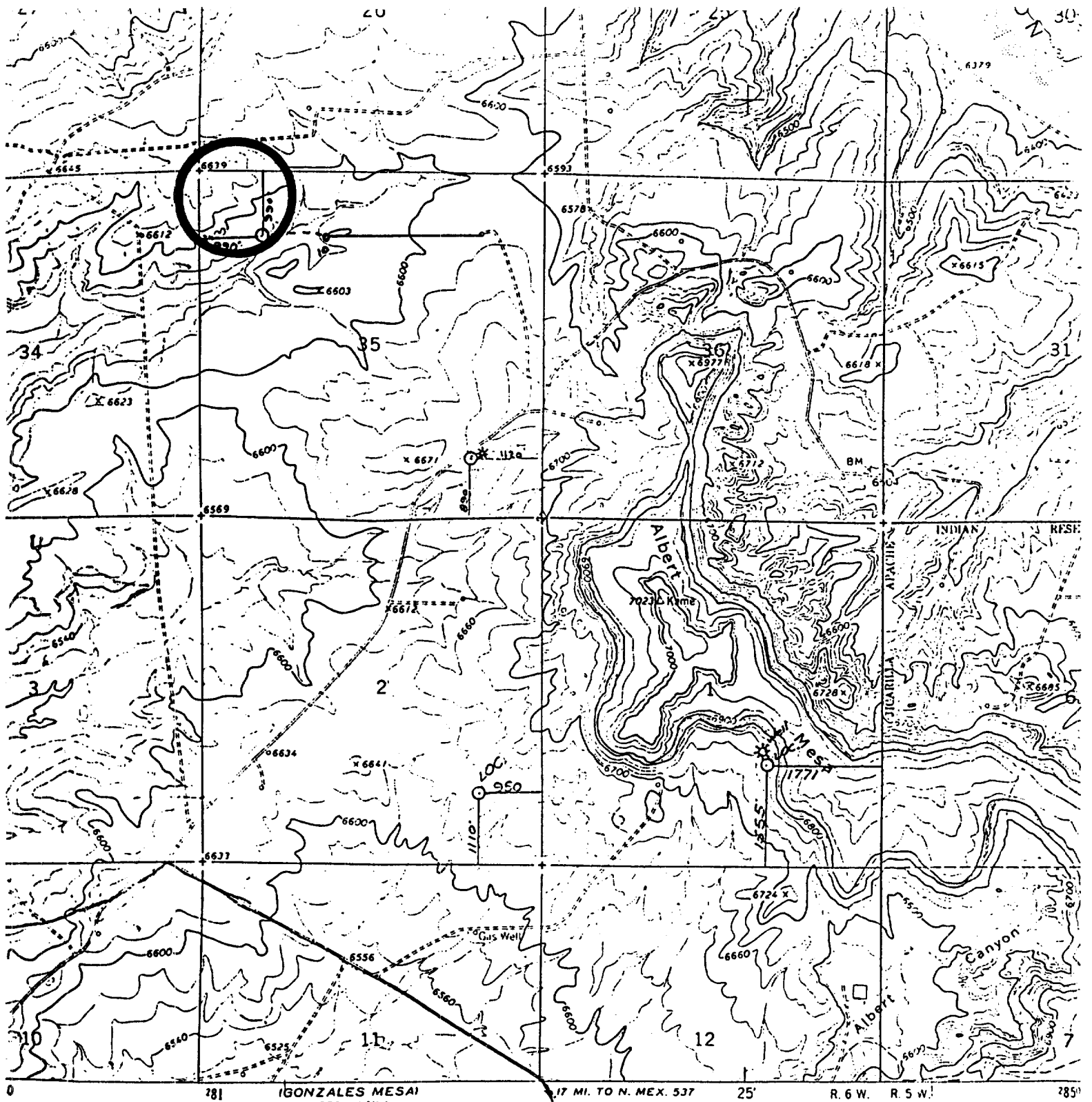
11-12-84

I hereby certify that the well location shown on this plat was plotted from field notes of actual surveys made by me or under my supervision, and that the same is true and correct to the best of my knowledge and belief.

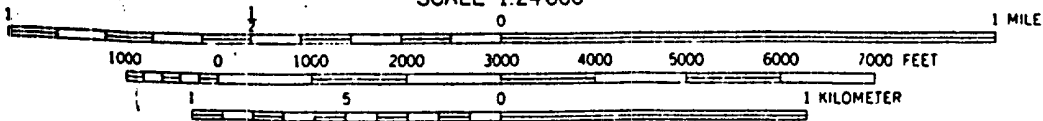
11-2-1984

Curtis G. Stocking
Registered Professional Engineer
and/or Land Surveyor
Curtis G. Stocking

Certificate No. 5930



SCALE 1:24 000



CONTOUR INTERVAL 20 FEET
DATUM IS MEAN SEA LEVEL

THIS MAP COMPLIES WITH NATIONAL MAP ACCURACY STANDARDS
MADE BY U.S. GEOLOGICAL SURVEY, DENVER, COLORADO 80225, OR WASHINGTON, D.C.
A FOLDER DESCRIBING TOPOGRAPHIC MAPS AND SYMBOLS IS AVAILABLE ON REQUEST

VICINITY MAP

Showing Well Location in NW/4
NW/4 of Sec. 35, T27N, R6W, N.M.
P.M., Rio Arriba County, New
Mexico

Scale: 1"=2000'

10

10

10

10

10

10

10

10

10

10

10

10

10

10

10

10

10

10

10

10

10

10

10

10

10

10

10

10

10

10

10

10

10

10

10

10

10

10

10

10

10

10

10

10

10

10