

submitted in lieu of Form 3160-5

UNITED STATES  
DEPARTMENT OF THE INTERIOR  
BUREAU OF LAND MANAGEMENT

Sundry Notices and Reports on Wells

1. Type of Well  
GAS

2. Name of Operator

**BURLINGTON  
RESOURCES**

3. Address & Phone No. of Operator

PO Box 4289, Farmington, NM 87499 (505) 326-9700

4. Location of Well, Footage, Sec., T, R, M

1450' FSL, 790' FEL, Sec. 27, T-27-N, R-4-W

5. Lease Number  
SF-080675

6. If Indian, All. or  
Tribe Name

7. Unit Agreement Name  
San Juan 27-4 Unit

8. Well Name & Number  
San Juan 27-4 U #132A

9. API Well No.  
30-039-23712

10. Field and Pool  
Blanco MV

11. County and State  
Rio Arriba Co., NM

12. CHECK APPROPRIATE BOX TO INDICATE NATURE OF NOTICE, REPORT, OTHER DATA

Type of Submission

☒ Notice of Intent

☐ Subsequent Report

☐ Final Abandonment

Type of Action

☐ Abandonment

☐ Recompletion

☐ Plugging Back

☐ Casing Repair

☐ Altering Casing

☒ Other -remove packer

☐ Change of Plans

☐ New Construction

☐ Non-Routine Fracturing

☐ Water Shut off

☐ Conversion to Injection

13. Describe Proposed or Completed Operations

It is intended to remove the packer from the subject well according to the attached procedure and wellbore diagram.

RECEIVED  
FEB - 5 1998

OIL CON. DIV.  
DIST. 3

14. I hereby certify that the foregoing is true and correct.

Signed [Signature] (SCOpps) Title Regulatory Admin. Date 1/12/98

(This space for Federal or State Office use)

APPROVED BY [Signature] Title IS/ Dunc W. Spencer Date FEB - 2 1998

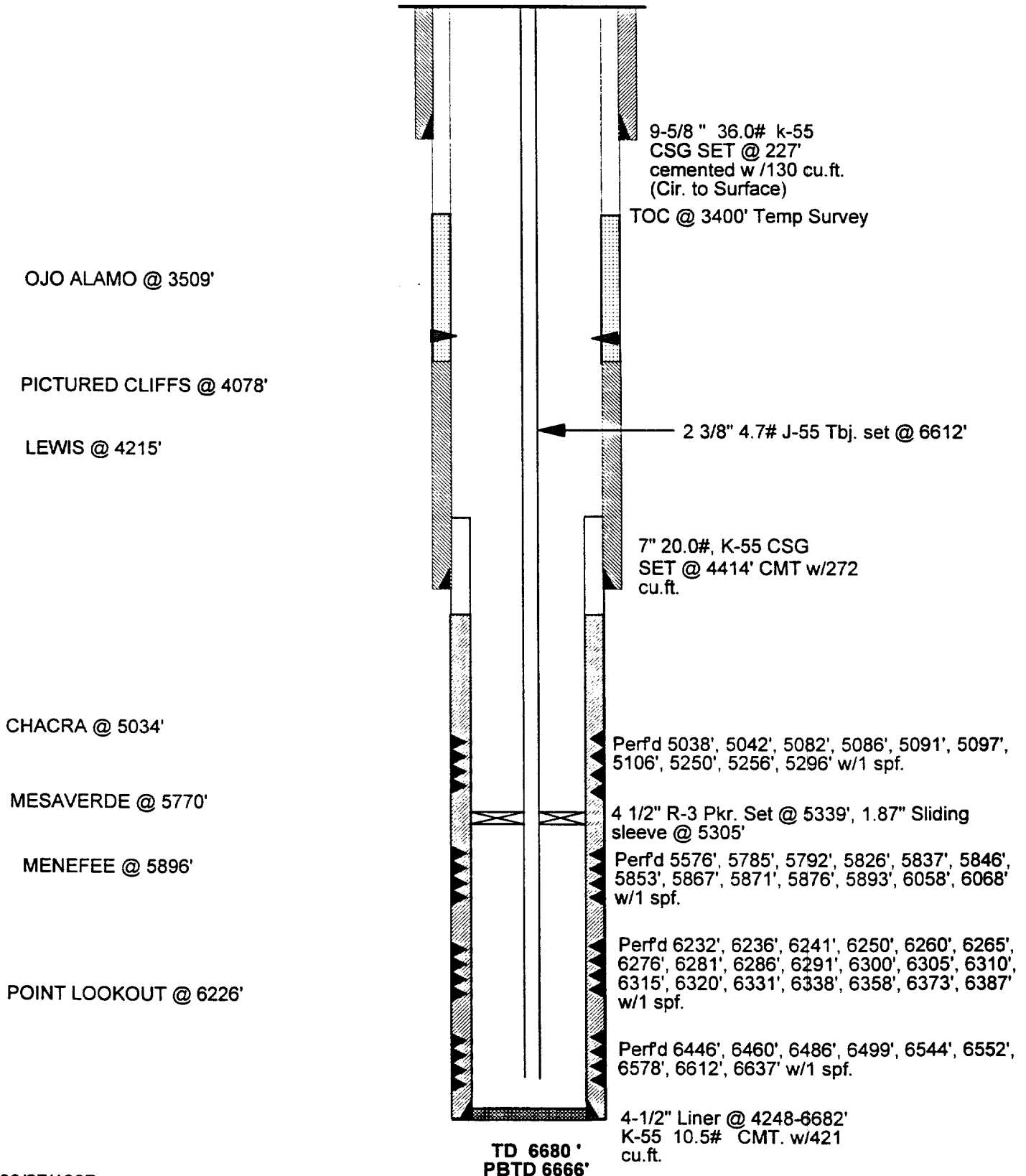
CONDITION OF APPROVAL, if any:

# SAN JUAN 27-4 UNIT 132A

CURRENT

LEWIS/BLANCO MESAVERDE

UNIT I, SEC 27, T27N, R4W, RIO ARRIBA, NM



## San Juan 27-4 Unit #132A

### Packer Retrieval

#### General Procedure

---

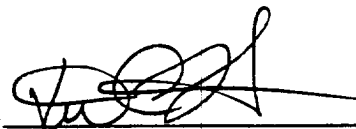
Inspect location and install and/or test rig anchors. Comply with all BLM, NMOCD, Forestry, and MOI rules and regulations. **BE SAFE.**

---

\*\*\*All vendors/service companies on location will be responsible for protection of the environment. Any questions call Steve Campbell 326-9546.\*\*\*

12. ND BOP. NU WH. Pump off check. Swab well if necessary. Contact Ward Arnold (326-9846) in Production Operations for well tie-in. RDMO.

Recommended: \_\_\_\_\_



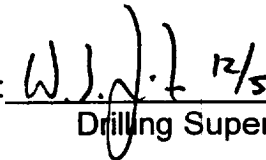
Summer Engineer II

Approved: \_\_\_\_\_



Regional Team Leader

Approved: \_\_\_\_\_



Drilling Superintendent

# San Juan 27-4 Unit #132A

## Packer Retrieval

### General Procedure

---

Inspect location and install and/or test rig anchors. Comply with all BLM, NMOCD, Forestry, and MOI rules and regulations. **BE SAFE.**

---

\*\*\*All vendors/service companies on location will be responsible for protection of the environment. Any questions call Steve Campbell 326-9546.\*\*\*

Blow down tubing. Do not kill well. NU full lubricator & test to wellhead pressure. RU wireline and set tubing plug in 1.81" R-nipple @ 6579'. Tubing should be dead.

1. MIRU. Hold Safety Meeting. Place fire and safety equipment at strategic locations. Obtain and record all wellhead pressures. NU relief line to flow back tank. ND WH, NU BOP. Test BOP to 3000 psi. Add 6' spacer spool to top of BOP.
2. PU tubing to release 4 1/2" Baker Model R-3 Packer. Lower tubing slightly to engage J-pin to J-slot (this process prevents packer resetting during trip). Refer to Baker specialist on deck.
3. TOOH w/ 167 jts 2 3/8" 4.7# J-55 EUE tbg, 1.87" Model L sliding sleeve, 1 jt 2 3/8" 4.7# J-55 EUE tbg, and pull 4 1/2" Baker Model R-3 Packer into the 6' spacer spool. Visually inspect, tally, and stand back.
4. Shut pipe rams and open 2" csg valves to prevent pressure buildup.
5. Unscrew stripping heading assembly and pull stripping rubber and packer above stripping head assembly.
6. Install tbg slips. Remove and LD packer and sliding sleeve.
7. Screw back onto tbg string in stripping head assembly w/ tbg joint wedged in stripping rubber.
8. Screw stripping rubber back onto the stripping head assembly.
9. Open pipe rams and continue to TOOH w/ 39 jts 2 3/8" 4.7# J-55 EUE tbg, 1.81" R-nipple, and 1 jt 2 3/8" 4.7# J-55 EUE tbg. Visually inspect, tally, and stand back. LD Packer and sliding sleeve. (151 jts total).
10. Rabbit and TIH w/ exp check, 1 jt 2 3/8" 4.7# J-55 EUE tbg, 1.81" R-nipple (set @ 6579'), 208 jts 2 3/8" 4.7# J-55 EUE tbg. Land tbg @ 6610'.