

UNITED STATES
DEPARTMENT OF THE INTERIOR
BUREAU OF LAND MANAGEMENT

SUBMIT IN TRIPLICATE*
(Other instructions on
reverse side)

30-039-23757
Form approved.
Budget Bureau No. 1004-0136
Expires August 31, 1985

APPLICATION FOR PERMIT TO DRILL, DEEPEN, OR PLUG BACK

1a. TYPE OF WORK
DRILL ☒ DEEPEN ☐ PLUG BACK ☐
b. TYPE OF WELL
OIL WELL ☐ GAS WELL ☒ OTHER ☐ SINGLE ZONE ☒ MULTIPLE ZONE ☐
2. NAME OF OPERATOR
El Paso Natural Gas Company
3. ADDRESS OF OPERATOR
PO Box 4289, Farmington, NM 87499
4. LOCATION OF WELL (Report location clearly and in accordance with any State requirements.)
At surface 860'N, 1035'W
At proposed prod. zone

5. LEASE DESIGNATION AND SERIAL NO.
SF 079391
6. IF INDIAN, ALLOTTEE OR TRIBE NAME
7. UNIT AGREEMENT NAME
San Juan 27-5 Unit
8. FARM OR LEASE NAME
San Juan 27-5 Unit
9. WELL NO.
163E
10. FIELD AND POOL, OR WILDCAT
Basin Dakota
11. SEC., T., E., M., OR BLK.
AND SURVEY OR AREA
Sec. 18, T-27-N, R-5-W
NMPM
12. COUNTY OR PARISH
Rio Arriba
13. STATE
NM

14. DISTANCE IN MILES AND DIRECTION FROM NEAREST TOWN OR POST
8 miles south of Gobernador, NM
15. DISTANCE FROM PROPOSED* LOCATION TO NEAREST PROPERTY OR LEASE LINE, FT.
(Also to nearest drlg. unit line, if any) 860
16. NO. OF ACRES IN LEASE
Unit
17. NO. OF ACRES ASSIGNED TO THIS WELL
320.00 w 321.08
18. DISTANCE FROM PROPOSED LOCATION* TO NEAREST WELL, DRILLING, COMPLETED OR APPLIED FOR, ON THIS LEASE, FT.
300'
19. PROPOSED DEPTH
7600'
20. ROTARY OR CABLE TOOLS
Rotary
21. ELEVATIONS (Show whether DF, RT, GR, etc.)
6389' GL
22. APPROX. DATE WORK WILL START*
This action is subject to technical and procedural review pursuant to 43 CFR 3165.3 and appeal pursuant to 43 CFR 3165.4.
23. PROPOSED CASING AND CEMENTING PROGRAM

SIZE OF HOLE	SIZE OF CASING	WEIGHT PER FOOT	SETTING DEPTH	QUANTITY OF CEMENT
12 1/4"	9 5/8"	36.0#	200'	130 cf circulated
8 3/4"	7"	20.0#	3475'	320 cf cover Ojo Alamo
6 1/4"	4 1/2"	10.5&11.6#	7600'	658 cf fill to inter.

Selectively perforate and sand water fracture the Dakota formation.

A 3000 psi WP and 6000 psi test double gate preventer equipped with blind and pipe rams will be used for blow out prevention on this well.

This gas is dedicated.

The W/2 of Section 18 is dedicated to this well.

RECEIVED
JUL 03 1985
OIL CON. DIV.
DIST. 3

IN ABOVE SPACE DESCRIBE PROPOSED PROGRAM: If proposal is to deepen or plug back, give data on present productive zone and proposed new productive zone. If proposal is to drill or deepen directionally, give pertinent data on subsurface locations and measured and true vertical depths. Give blowout preventer program, if any.

24. Drilling Clerk 6-7-85
SIGNATURE [Signature] TITLE DATE

(This space for Federal or State office use)

PERMIT NO. APPROVAL DATE APPROVED AS AMENDED

APPROVED BY ohf TITLE DATE JUL 02 1985
CONDITIONS OF APPROVAL, IF ANY: (SGD.) MAT MILLENBACH
M. MILLENBACH
AREA MANAGER

NMOCC
*See Instructions On Reverse Side

NEW MEXICO OIL CONSERVATION COMMISSION
WELL LOCATION AND ACREAGE DEDICATION PLAT

Form C-102
Supersedes C-128
Effective 1-1-65

All distances must be from the outer boundaries of the Section.

Operator EL PASO NATURAL GAS COMPANY			Lease SAN JUAN 27-5 UNIT (SF 079391)		Well No. 163E
Unit Letter D	Section 18	Township 27N	Range 5W	County Rio Arriba	
Actual Footage Location of Well: 860 feet from the North line and 1035 feet from the West line					
Ground Level Elev. 6389	Producing Formation Dakota		Pool Basin		Dedicated Acreage: \$20321.00 Acres

1. Outline the acreage dedicated to the subject well by colored pencil or hachure marks on the plat below.
2. If more than one lease is dedicated to the well, outline each and identify the ownership thereof (both as to working interest and royalty).
3. If more than one lease of different ownership is dedicated to the well, have the interests of all owners been consolidated by communitization, unitization, force-pooling, etc?

☒ Yes ☐ No If answer is "yes," type of consolidation Unitization

If answer is "no," list the owners and tract descriptions which have actually been consolidated. (Use reverse side of this form if necessary.)

No allowable will be assigned to the well until all interests have been consolidated (by communitization, unitization, forced-pooling, or otherwise) or until a non-standard unit, eliminating such interests, has been approved by the Commission.

CERTIFICATION

I hereby certify that the information contained herein is true and complete to the best of my knowledge and belief.

Name

Peggy Quah
Drilling Clerk

Position

El Paso Natural Gas

Company

Date

I hereby certify that the well location shown on this plat was plotted from field notes of actual surveys made by me or under my supervision, and that the same is true and correct to the best of my knowledge and belief.

Date Surveyed

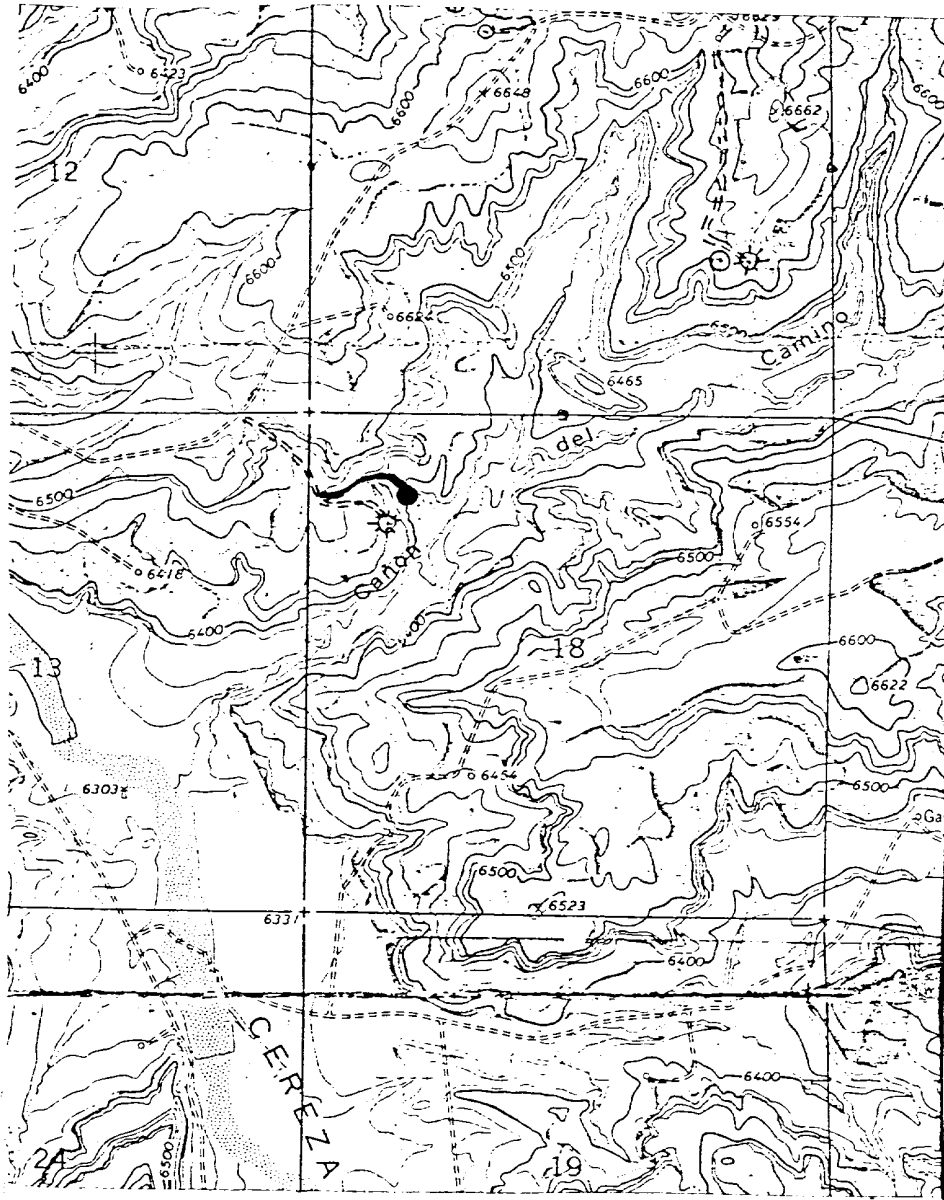
June 6, 1985
May 1, 1985

Registered Professional Engineer and Land Surveyor.

Fred B. Kerr Jr.
Fred B. Kerr Jr.

Certificate No. 4, 1985

Basin Dakota



PROPOSED ROAD & PIPELINE