

UNITED STATES  
DEPARTMENT OF THE INTERIOR  
BUREAU OF LAND MANAGEMENT

APPLICATION FOR PERMIT TO DRILL, DEEPEN, OR PLUG BACK

1a. TYPE OF WORK

DRILL ☒

DEEPEN ☐

PLUG BACK ☐

b. TYPE OF WELL

OIL  
WELL ☐

GAS  
WELL ☒

OTHER

SINGLE  
ZONE ☒

MULTIPLE  
ZONE ☒

2. NAME OF OPERATOR

El Paso Natural Gas Company

3. ADDRESS OF OPERATOR

PO Box 4289, Farmington, NM 87499

4. LOCATION OF WELL (Report location clearly and in accordance with State requirements.)

At surface

1650'S, 1190'E 910'E

At proposed prod. zone

BUREAU OF LAND MANAGEMENT

14. DISTANCE IN MILES AND DIRECTION FROM NEAREST TOWN OR RESERVATION RESOURCE AREA

8 miles Southeast of Gobernador, NM

15. DISTANCE FROM PROPOSED\*

LOCATION TO NEAREST  
PROPERTY OR LEASE LINE, FT.  
(Also to nearest drig. unit line, if any)

1190'

18. DISTANCE FROM PROPOSED LOCATION\*

TO NEAREST WELL, DRILLING, COMPLETED  
OR APPLIED FOR, ON THIS LEASE, FT.

500'

16. NO. OF ACRES IN LEASE

Unit

19. PROPOSED DEPTH

6000'

17. NO. OF ACRES ASSIGNED  
TO THIS WELL

E 320.00/320

20. ROTARY OR CABLE TOOLS

Rotary

21. ELEVATIONS (Show whether DF, RT, GR, etc.)

6609' GL

23.

17 1/2"

13 3/8"

DRILLING OPERATIONS AUTHORIZED ARE  
SUBJECT TO COMPLIANCE WITH ATTACHED  
"GENERAL REQUIREMENTS"

PROPOSED CASING AND CEMENTING PROGRAM

SIZE OF HOLES

SIZE OF CASING

WEIGHT PER FOOT

SETTING DEPTH

QUANTITY OF CEMENT

12 1/4"

9 5/8"

40.0#

3650200'

130 50' ft. circulated

8 3/4"

7"

23# 20.0#

3500 3650' 6150

280 60' ft. cover Ojo Alamo line

6 1/4"

4 1/2"

10.5#

5500-6000'

438 32' cu. ft. circ liner

11.6# 6000' 7835'

See attached

Selectively perforate and sand water fracture the Mesa Verde formation.

A 3000 psi WP and 6000 psi test double gate preventer equipped with  
blind and pipe rams will be used for blow out prevention on this well.

This gas is dedicated.

The E/2 of Section 07 is dedicated to this well.

This action is subject to technical and  
procedural review pursuant to 43 CFR 3165.3  
and appeal pursuant to 43 CFR 3165.4.

RECEIVED

AUG 09 1985

OIL CON. DIV

DIST. 3

IN ABOVE SPACE DESCRIBE PROPOSED PROGRAM: If proposal is to deepen or plug back, give data on present productive zone and proposed new productive zone. If proposal is to drill or deepen directionally, give pertinent data on subsurface locations and measured and true vertical depths. Give blowout preventer program, if any.

24.

SIGNED

(This space for Federal or State office use)

TITLE

Drilling Clerk

APPROVED

AS AMENDED

PERMIT NO.

APPROVAL DATE

APPROVED BY

TITLE

CONDITIONS OF APPROVAL, IF ANY:

AUG 06 1985

Stan McKee

M. MILLENBACH  
AREA MANAGER

NMOCC

\*See Instructions On Reverse Side

NEW MEXICO OIL CONSERVATION COMMISSION  
WELL LOCATION AND ACREAGE DEDICATION PLAT

Form C-102  
Supersedes C-128  
Effective 1-1-65

All distances must be from the outer boundaries of the Section.

Operator <b>EL PASO NATURAL GAS COMPANY</b>			Lease <b>SAN JUAN 27-5 UNIT (SF 079391)</b>		Well No. <b>69M</b>
Unit Letter <b>I</b>	Section <b>7</b>	Township <b>27N</b>	Range <b>5W</b>	County <b>Rio Arriba</b>	
Actual Footage Location of Well: <b>1650</b> feet from the <b>South</b> line and <b>910</b> feet from the <b>East</b> line					
Ground Level Elev: <b>6610</b>	Producing Formation <b>Mesa Verde /Dakota</b>		Pool <b>Blanco /Basin</b>		Dedicated Acreage: <b>E 320 &amp; 320</b> Acres

1. Outline the acreage dedicated to the subject well by colored pencil or hachure marks on the plat below.
2. If more than one lease is dedicated to the well, outline each and identify the ownership thereof (both as to working interest and royalty).
3. If more than one lease of different ownership is dedicated to the well, have the interests of all owners been consolidated by communitization, unitization, force-pooling, etc?

☒ Yes ☐ No If answer is "yes," type of consolidation Unitization

If answer is "no," list the owners and tract descriptions which have actually been consolidated. (Use reverse side of this form if necessary.) \_\_\_\_\_

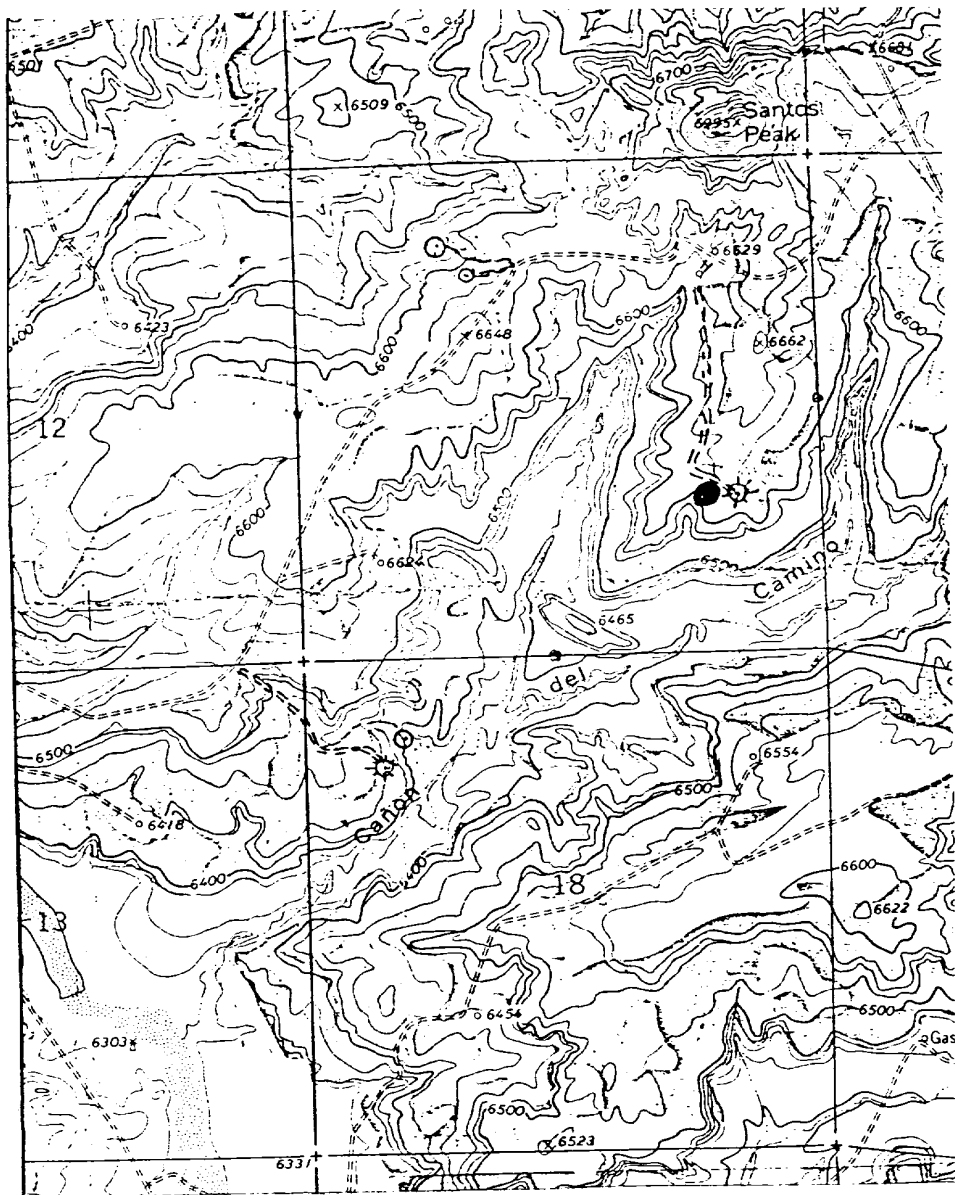
No allowable will be assigned to the well until all interests have been consolidated (by communitization, unitization, forced-pooling, or otherwise) or until a non-standard unit, eliminating such interests, has been approved by the Commission. Note: location changed and name changed to reflect dual well. 7-25-85

<p><b>RECEIVED</b> <b>JUL 31 1985</b> <b>BUREAU OF LAND MANAGEMENT</b> <b>FARMINGTON RESOURCE AREA</b></p> <p>Sec. _____</p>			
<p><b>RECEIVED</b> <b>AUG 09 1985</b> <b>OIL CON. DIV.</b> <b>DIST. 3</b></p>		<p>7</p> <p>910'</p> <p>1650'</p>	

Scale: 1"=1000'

<p><b>CERTIFICATION</b></p> <p>I hereby certify that the information contained herein is true and complete to the best of my knowledge and belief.</p> <p><i>[Signature]</i> Name _____</p> <p>Drilling Clerk Position _____ El Paso Natural Gas Co. Company _____ Date <u>July 30, 1985</u></p>	
<p>I hereby certify that the well location shown on this plat was plotted from field notes of actual surveys made by me or under my supervision, and that the same is true and correct to the best of my knowledge and belief.</p> <p>Date Surveyed <u>May 1, 1985</u> Registered Professional Engineer and Land Surveyor <i>[Signature]</i> Fred B. Kerr Jr. Certificate No. <u>3950</u></p>	

San Juan 27-5 #69A  
SE 7-27-5



Map #1

# LEGEND OF RIGHT-OF-WAYS

EXISTING ROADS

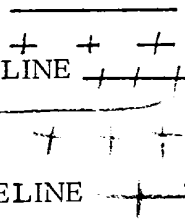
EXISTING PIPELINES

EXISTING ROAD & PIPELINE

PROPOSED ROADS

PROPOSED PIPELINES

PROPOSED ROAD & PIPELINE



Form 3160-5  
(November 1983)  
(Formerly 9-331)

UNITED STATES  
DEPARTMENT OF THE INTERIOR  
BUREAU OF LAND MANAGEMENT

SUBMIT IN TRIPLICATE\*  
(Other instructions on re-  
verse side)

Form approved.  
Budget Bureau No. 1004-0135  
Expires August 31, 1985

SUNDRY NOTICES AND REPORTS ON WELLS

(Do not use this form for proposals to drill or to deepen or plug back to a different reservoir.  
Use "APPLICATION FOR PERMIT—" for such proposals.)

1. OIL WELL <input type="checkbox"/> GAS WELL <input checked="" type="checkbox"/> OTHER <input type="checkbox"/>	7. UNIT AGREEMENT NAME San Juan 27-5 Unit
2. NAME OF OPERATOR El Paso Natural Gas Company	8. FARM OR LEASE NAME San Juan 27-5 Unit
3. ADDRESS OF OPERATOR Post Office Box 4289, Farmington, NM 87499	9. WELL NO. 69M-11
4. LOCATION OF WELL (Report location clearly and in accordance with any State requirements. See also space 17 below.) At surface 1650'S, 910'E	10. FIELD AND POOL, OR WILDCAT Blanco MV/Basin Dk
14. PERMIT NO.	11. SEC., T., R., M., OR BLK. AND SURVEY OR AREA Sec 7, T-27-N, R- 5-W
15. ELEVATIONS (Show whether DF, RT, CR, etc.) 6610'GL	12. COUNTY OR PARISH Rio Arriba
	13. STATE NM

RECEIVED

JUL 31 1985

BUREAU OF LAND MANAGEMENT  
FARMINGTON RESOURCE AREA

16. Check Appropriate Box To Indicate Nature of Notice, Report, or Other Data

NOTICE OF INTENTION TO:

TEST WATER SHUT-OFF

FRACTURE TREAT

SHOOT OR ACIDIZE

REPAIR WELL

(Other)

PULL OR ALTER CASING

MULTIPLE COMPLETE

ABANDON\*

CHANGE PLANS

SUBSEQUENT REPORT OF:

WATER SHUT-OFF

FRACTURE TREATMENT

SHOOTING OR ACIDIZING

(Other)

REPAIRING WELL

ALTERING CASING

ABANDONMENT\*

(Note: Report results of multiple completion on Well Completion or Recompletion Report and Log form.)

17. DESCRIBE PROPOSED OR COMPLETED OPERATIONS (Clearly state all pertinent details, and give pertinent dates, including estimated date of starting any proposed work. If well is directionally drilled, give subsurface locations and measured and true vertical depths for all markers and zones pertinent to this work.)\*

This location was permitted to drill as the San Juan 27-5 Unit #69A, a Mesa Verde well. Due to a change of plans, it is intended to drill this location as the San Juan 27-5 Unit #69M, a Mesa Verde - Dakota dual.

Attached is a revised well location plat and operations plan for this well.

Please amend our drilling permit to show the name change and the dual completion.

RECEIVED

AUG 09 1985

OIL CON. DIV.  
DIST. 3

18. I hereby certify that the foregoing is true and correct

SIGNED

TITLE

Drilling Clerk

(This space for Federal or State office use)

APPROVED BY

TITLE

CONDITIONS OF APPROVAL, IF ANY:

DATE 7-30-85

APPROVED

AS AMENDED

DATE AUG 06 1985

By J. Stan McKee

M. MILLENBACH  
AREA MANAGER

\*See Instructions on Reverse Side

NMOCC

Title 18 U.S.C. Section 1001, makes it a crime for any person knowingly and willfully to make to any department or agency of the United States any false, fictitious or fraudulent statements or representations as to any matter within its jurisdiction.

Operations Plan - EPNG San Juan 27-5 Unit #69M

I. Location: 1650'S, 910'E ,Sec. 7,T-27-N,R-05-W, Rio Arriba Co., NM

Field: Blanco MV/Basin Dk

Elevation: 6610'GL

II. Geology

A. Formation Tops:	Surface	San Jose	Menefee	5215'
	Ojo Alamo	2695'	Pt. Lookout	5550'
	Kirtland	2895'	Gallup	6550'
	Fruitland	3158'	Greenhorn	7495'
	Pictured Cliffs	3375'	Graneros	7545'
	Lewis	3225'	Dakota	7685'
	Mesa Verde	5060'	Total Depth	7835'

B. Logging Program: IND-GR, GR-D-N @ 6150' and TD.

C. Coring Program: none.

D. Natural Gauges: 4335', 5050', 5200', 5540', 5720', 6540', 7485', 7535', 7675' and at Total Depth. Also gauge any noticeable increase in gas. Record all gauges in daily drilling report and on morning report.

III. Drilling:

A. Mud Program: Mud from surface to 3650'. Gas from intermediate to Total Depth.

IV. Materials:

A. Casing Program:	<u>Hole Size</u>	<u>Depth</u>	<u>Csg.Size</u>	<u>Wt.&amp;Grade</u>
	17 1/2"	200'	13 3/8"	40.0#H-40
	12 1/4"	3650'	9 5/8"	40.0#N-80
	8 3/4"	3500-6150'	7"	23.0#N-80
	6 1/4"	6000-7835'	4 1/2"	11.6#N-80

B. Float Equipment: 13 3/8" surface casing - guide shoe.

9 5/8" intermediate casing - guide shoe and differential automatic fill up float collar. 5 rigid centralizers, one every other joint above shoe. Run float two joints above shoe.

7" liner - 7" liner hanger with neoprene packoff. Geyser shoe and flapper type float collar. Four centralizers, one each on every other joint above shoe.

4 1/2" liner - 4 1/2" liner hanger with neoprene packoff. Geyser shoe and flapper type float collar.

C. Tubing: 6000' of 1 1/2", 2.9#, J-55 EUE 10rd tubing with a perf sub and common pump seating nipple one joint above bottom. Bottom joint to be bull plugged.

7835' of 2 3/8", 4.7#, J-55 EUE 8rd tubing open ended on bottom with common pump seating nipple and pump out plug one joint above bottom..

D. Wellhead Equipment: 12" 3000 x 13 3/8" casing head. 12" 3000 x 10" 3000 dual xmas tree.

Operations Plan - EPNG San Juan 27-5 Unit #69M

V. Cementing:

13 3/8" surface casing - use 235 sks. Class "B" cement with 1/4# gel-flake per sack and 3% calcium chloride (277 cu.ft. of slurry, 100% excess to circulate to surface). WOC 12 hours. Test casing to 600#/30 minutes.

9 5/8" intermediate casing - use 300 sks. 65/35 Class "B" Poz with 6% gel, 2% calcium chloride (8.3 gallons water per sack) followed by 100 sks. Class "B" with 2% calcium chloride (604 cu.ft. of slurry, 100% excess to cover Ojo Alamo). Run temperature survey at 8 hours. WOC 12 hours. Test casing to 1200#/30 minutes.

7" liner - precede cement with 30 bbls. gel water (3 sks. gel). Cement with 490 sks. 50/50 Class "B" Poz with 2% gel, 6.25# gilsonite, 1/4# flocele and 0.6% Halad 9 (or equivalent fluid loss additive)(666 cu.ft. of slurry, 70% excess to circulate liner). WOC 12 hours. Test casing to 1200#/30 minutes.

4 1/2" liner - precede cement with 40 bbls. gel water (4 sks. gel). Cement with 95 sks. Class "B" cement w/8% gel, 1/4 cu.ft. fine gilsonite per sack and 0.4% HR-7 followed by 100 sks. Class "B" cement with 1/4# fine tuf-plug per sack and 0.4% HR-7 (324 cu.ft. of slurry, 70% excess to fill to circulate liner). WOC 18 hours.