

UNITED STATES  
DEPARTMENT OF THE INTERIOR  
BUREAU OF LAND MANAGEMENT

SUBMIT IN TRIPLICATE\*  
(Other instructions on  
reverse side)

Form approved.  
Budget Bureau No. 1004-0136  
Expires August 31, 1985

APPLICATION FOR PERMIT TO DRILL, DEEPEN, OR PLUG BACK

1a. TYPE OF WORK  
DRILL ☒ DEEPEN ☐ PLUG BACK ☐

b. TYPE OF WELL  
OIL WELL ☐ GAS WELL ☒ OTHER ☐ SINGLE ZONE ☐ MULTIPLE ZONE ☒

2. NAME OF OPERATOR  
El Paso Natural Gas Company

3. ADDRESS OF OPERATOR  
PO Box 4289, Farmington, NM 87499

4. LOCATION OF WELL (Report location clearly and in accordance with any State requirements.)  
At surface 1420'N, 1050'W  
At proposed prod. zone

14. DISTANCE IN MILES AND DIRECTION FROM NEAREST TOWN OR POST OFFICE\*  
9 miles Southeast of Gobernador, NM

15. DISTANCE FROM PROPOSED\*  
LOCATION TO NEAREST  
PROPERTY OR LEASE LINE, FT.  
(Also to nearest drlg. unit line, if any) 1050

16. NO. OF ACRES IN LEASE  
Unit 1600.36

17. NO. OF ACRES ASSIGNED  
TO THIS WELL  
W/320.00 N/320.00

18. DISTANCE FROM PROPOSED LOCATION\*  
TO NEAREST WELL, DRILLING, COMPLETED  
OR APPLIED FOR, ON THIS LEASE, FT. 1950'

19. PROPOSED DEPTH  
8580'

20. ROTARY OR CABLE TOOLS  
Rotary

21. ELEVATIONS (Show whether DF, RT, GR, etc.)  
7310' GL DRILLING OPERATIONS AUTHORIZED ARE

23. PROPOSED CASING AND CEMENTING PROGRAM  
"GENERAL REQUIREMENTS"

This action is subject to technical and  
procedural review pursuant to 43 CFR 3185.3  
and appeal pursuant to 43 CFR 3185.4.

SIZE OF HOLE	SIZE OF CASING	WEIGHT PER FOOT	SETTING DEPTH	QUANTITY OF CEMENT
17 1/2"	13 3/8"	48.0#	200'	307 cf circ. surface
12 1/2"	9 5/8"	40.0#	4520'	620 cf cover Ojo Alamo
8 3/4"	7"	23.0#	6930'	653 cf circ. liner
6 1/4"	4 1/2"	11.6#	8580'	313 cf fill liner.

Selectively perforate and sand water fracture the Mesa Verde and Dakota formations

A 3000 psi WP and 6000 psi test double gate preventer equipped with blind and pipe rams will be used for blow out prevention on this well.

This gas is dedicated.

The W/2 and N/2 of Section 29 is dedicated to this well

IN ABOVE SPACE DESCRIBE PROPOSED PROGRAM: If proposal is to deepen or plug back, give data on present productive zone and proposed new productive zone. If proposal is to drill or deepen directionally, give pertinent data on subsurface locations and measured and true vertical depths. Give blowout preventer program, if any.

24. SIGNED *[Signature]*

TITLE Drilling Clerk

DATE 9-26-85

(This space for Federal or State office use)

PERMIT NO. APPROVAL DATE

APPROVED BY CONDITIONS OF APPROVAL, IF ANY:

TITLE

NMOCC

\*See Instructions On Reverse Side

Title 18 U.S.C. Section 1001, makes it a crime for any person knowingly and willfully to make to any department or agency of the United States any false, fictitious or fraudulent statements or representations as to any matter within its jurisdiction.

30-639-23895

5. LEASE DESIGNATION AND SERIAL NO.  
SF 079491

6. IF INDIAN, ALLOTTEE OR TRIBE NAME

7. UNIT AGREEMENT NAME

San Juan 27-5 Unit

8. FARM OR LEASE NAME

San Juan 27-5 Unit

9. WELL NO.

104M

10. FIELD AND POOL, OR WILDCAT

Blanco MV/Basin Dk

11. SEC. T. R. M. OR BLK.  
AND SURVEY OR AREA

E Sec. 12, T-27-N, R-5-W  
NMPM

12. COUNTY OR PARISH 13. STATE

Rio Arriba NM

RECEIVED  
OCT 10 1985

OIL CON. DIV.  
DIST. 3

APPROVED  
AS AMENDED

OCT 08 1985

(SGD.) MAT MILLENBACH  
M. MILLENBACH  
AREA MANAGER

NEW MEXICO OIL CONSERVATION COMMISSION  
WELL LOCATION AND ACREAGE DEDICATION PLAT

Form C-102  
Supersedes C-128  
Effective 1-1-65

All distances must be from the outer boundaries of the Section.

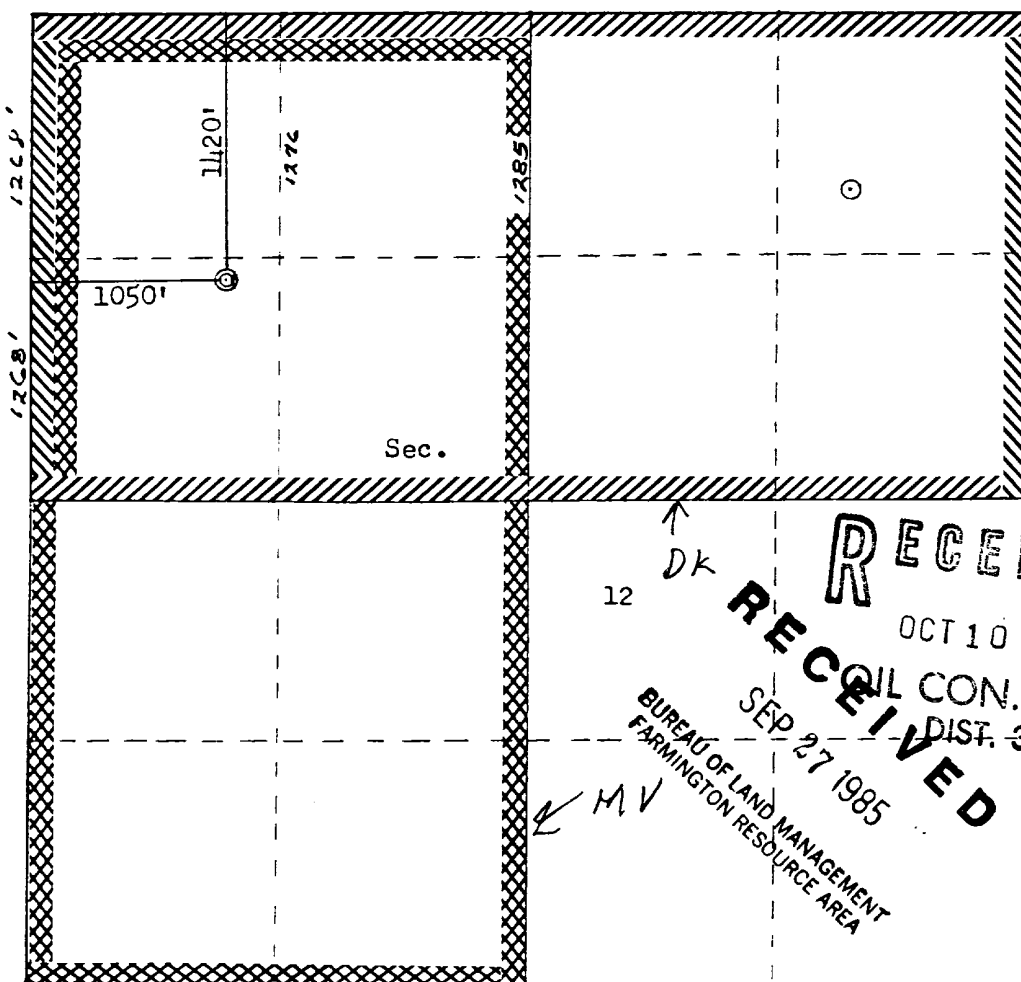
Operator <b>EL PASO NATURAL GAS COMPANY</b>			Lease <b>SAN JUAN 27-5 UNIT (SF 079491)</b>		Well No. <b>104M</b>
Unit Letter <b>E</b>	Section <b>12</b>	Township <b>27N</b>	Range <b>5W</b>	County <b>Rio Arriba</b>	
Actual Footage Location of Well: <b>1420</b> feet from the <b>North</b> line and <b>1050</b> feet from the <b>West</b> line					
Ground Level Elev. <b>7310</b>	Producing Formation <b>Mesa Verde/Dakota</b>		Pool <b>Blanco/Basin</b>	Dedicated Acreage: <b>320 &amp; 320</b> Acres	

1. Outline the acreage dedicated to the subject well by colored pencil or hachure marks on the plat below.
2. If more than one lease is dedicated to the well, outline each and identify the ownership thereof (both as to working interest and royalty).
3. If more than one lease of different ownership is dedicated to the well, have the interests of all owners been consolidated by communitization, unitization, force-pooling, etc?

☒ Yes ☐ No If answer is "yes," type of consolidation Unitization

If answer is "no," list the owners and tract descriptions which have actually been consolidated. (Use reverse side of this form if necessary.)

No allowable will be assigned to the well until all interests have been consolidated (by communitization, unitization, forced-pooling, or otherwise) or until a non-standard unit, eliminating such interests, has been approved by the Commission.



Scale: 1"=1000'

CERTIFICATION

I hereby certify that the information contained herein is true and complete to the best of my knowledge and belief.

*Peggy L. Dack*  
Name

El Paso Natural Gas

Position  
Drilling Clerk

Company

*9-26-85*

Date

I hereby certify that the well location shown on this plat was plotted from field notes or actual surveys made by me or under my supervision, and that the same is true and correct to the best of my knowledge and belief.

Date Surveyed

*August 30, 1985*

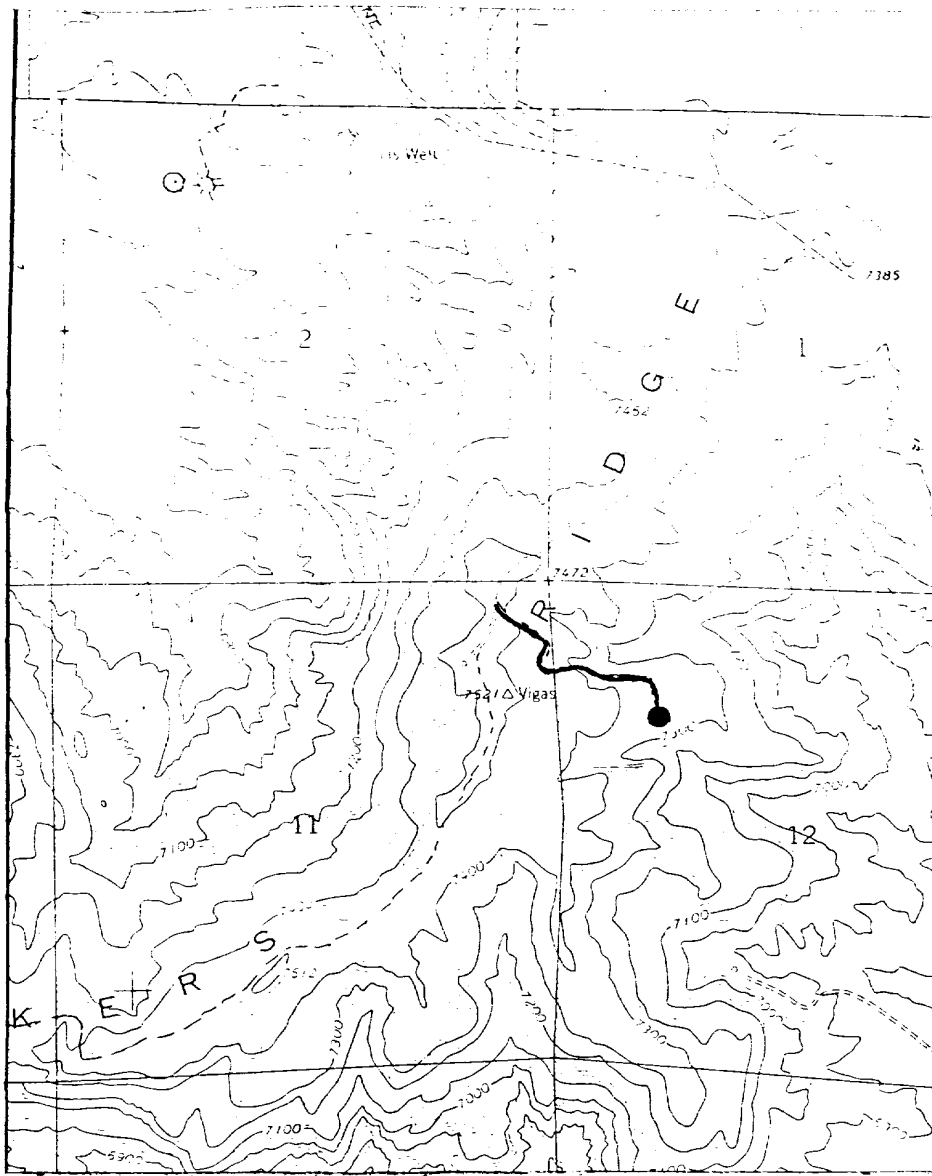
Registered Professional Engineer  
and Land Surveyor

*Fred E. Kerr Jr.*  
Fred E. Kerr Jr.

Certificate No.

*3950*

San Juan 27-5 U. #104M  
 SWNW 12-27-5 (MD)



Map #1

**LEGEND OF RIGHT-OF-WAYS**

- EXISTING ROADS
- EXISTING PIPELINES
- EXISTING ROAD & PIPELINE
- PROPOSED ROADS
- PROPOSED PIPELINES
- PROPOSED ROAD & PIPELINE