

UNITED STATES
DEPARTMENT OF THE INTERIOR
BUREAU OF LAND MANAGEMENT

APPLICATION FOR PERMIT TO DRILL, DEEPEN, OR PLUG BACK

1a. TYPE OF WORK
DRILL ☒ DEEPEN ☐ PLUG BACK ☐

b. TYPE OF WELL
OIL WELL ☐ GAS WELL ☒ OTHER ☐
SINGLE ZONE ☒ MULTIPLE ZONE ☐

2. NAME OF OPERATOR
El Paso Natural Gas Company

3. ADDRESS OF OPERATOR
PO Box 4289, Farmington, NM 87409

4. LOCATION OF WELL (Report location clearly and in accordance with any state or federal requirements.)
At surface 990'S,, 790'E
At proposed prod. zone

14. DISTANCE IN MILES AND DIRECTION FROM NEAREST TOWN OR POST OFFICE
9 miles S.of Gobernador, NM

15. DISTANCE FROM PROPOSED*
LOCATION TO NEAREST
PROPERTY OR LEASE LINE, FT.
(Also to nearest drlg. unit line, if any) 790'

16. NO. OF ACRES IN LEASE
Unit 1120

17. NO. OF ACRES ASSIGNED
TO THIS WELL 320.00

18. DISTANCE FROM PROPOSED LOCATION*
TO NEAREST WELL, DRILLING, COMPLETED
OR APPLIED FOR, ON THIS LEASE, FT. 1700'

19. PROPOSED DEPTH
7870'

20. ROTARY OR CABLE TOOLS
Rotary

21. ELEVATIONS (Show whether DF, RT, GR, etc.)
6599' GL

23. DRILLING OPERATIONS AUTHORIZED ARE
SUBJECT TO COMPLIANCE WITH ATTACHED
"GENERAL REQUIREMENTS"
PROPOSED DRILLING AND CEMENTING PROGRAM

This action is subject to technical and
procedural review pursuant to 43 CFR 3165.3
and appeal pursuant to 43 CFR 3165.4.

SIZE OF HOLE	SIZE OF CASING	WEIGHT PER FOOT	SETTING DEPTH	QUANTITY OF CEMENT
12 1/4"	9 5/8"	36.0#	200'	138 cf circulated
8 3/4"	7"	20.0#	3795'	296 cf cover Ojo Alamo
6 1/4"	4 1/2"	10.5&11.6#	7870'	627 cf fill to inter.

Selectively perforate and sand water fracture the Dakota formation.

A 3000 psi WP and 6000 psi test double gate preventer equipped with blind and pipe rams will be used for blow out prevention on this well.

This gas is dedicated.

The E/2 of Section 14 is dedicated to this well.

RECEIVED
OCT 15 1985
OIL CON. DIV.
DIST. 3

IN ABOVE SPACE DESCRIBE PROPOSED PROGRAM: If proposal is to deepen or plug back, give data on present productive zone and proposed new productive zone. If proposal is to drill or deepen directionally, give pertinent data on subsurface locations and measured and true vertical depths. Give blowout preventer program, if any.

24. Peggy Doak Drilling Clerk 9-20-85
SIGNED TITLE DATE

(This space for Federal or State office use)

PERMIT NO. APPROVAL DATE

APPROVED BY TITLE
CONDITIONS OF APPROVAL, IF ANY:

APPROVED
AS AMENDED

OCT 09 1985

/s/ J. Stan McKee
M. MILLENBACH
AREA MANAGER

NMOCC

*See Instructions On Reverse Side

NEW MEXICO OIL CONSERVATION COMMISSION
WELL LOCATION AND ACREAGE DEDICATION PLAT

Form C-102
Supersedes C-128
Effective 1-1-65

All distances must be from the outer boundaries of the Section.

Operator EL PASO NATURAL GAS COMPANY			Lease SAN JUAN 27-5 UNIT (SE-079492-B)			Well No. 103E		
Unit Letter P	Section 14	Township 27N	Range 5W	County Rio Arriba				
Actual Footage Location of Well:								
990		feet from the		South		line and		790
						feet from the		East
Ground Level Elev: 5599		Producing Formation Dakota		Pool Basin Dakota		Dedicated Acreage: 320 320 Acres		

1. Outline the acreage dedicated to the subject well by colored pencil or hatchure marks on the plat below.
2. If more than one lease is dedicated to the well, outline each and identify the ownership thereof (both as to working interest and royalty).
3. If more than one lease of different ownership is dedicated to the well, have the interests of all owners been consolidated by communitization, unitization, force-pooling, etc?

☐ Yes ☐ No If answer is "yes," type of consolidation _____

If answer is "no," list the owners and tract descriptions which have actually been consolidated. (Use reverse side of this form if necessary.) _____

No allowable will be assigned to the well until all interests have been consolidated (by communitization, unitization, forced-pooling, or otherwise) or until a non-standard unit, eliminating such interests, has been approved by the Commission.

RECEIVED

SEP 23 1985

BUREAU OF LAND MANAGEMENT
FARMINGTON RESOURCE AREA

RECEIVED

OCT 15 1985

OIL CON. DIV.
DIST. 2

Sec. **14**

790'

990'

Scale: 1"=1000'

CERTIFICATION

I hereby certify that the information contained herein is true and complete to the best of my knowledge and belief.

[Signature]
Name

Position
Drilling Clerk

Company
El Paso Natural Gas

Date
9-20-85

I hereby certify that the well location shown on this plat was plotted from field notes of actual surveys made by me or under my supervision, and that the same is true and correct to the best of my knowledge and belief.

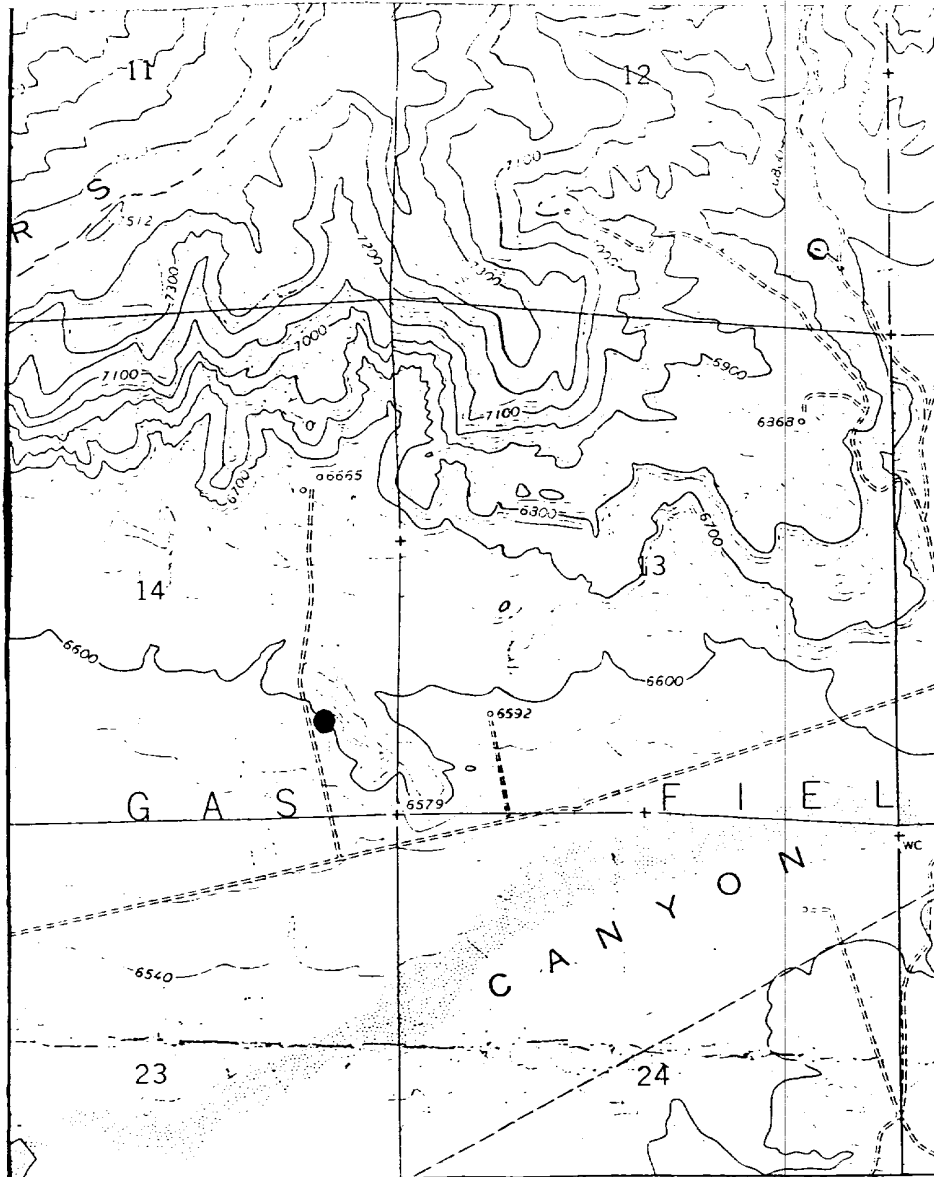
Date Surveyed
September 13, 1985

Registered Professional Engineer
and Land Surveyor

[Signature]
Fred E. Kerr Jr.

License No.
3350

San Juan 27-5 U. #103E
NWSE 14-27-5 (DK)



Map #1

LEGEND OF RIGHT-OF-WAYS

EXISTING ROADS —————
EXISTING PIPELINES + + +
EXISTING ROAD & PIPELINE + + + +
PROPOSED ROADS —————
PROPOSED PIPELINES + + +
PROPOSED ROAD & PIPELINE — + + +