

UNITED STATES  
DEPARTMENT OF THE INTERIOR  
BUREAU OF LAND MANAGEMENT

APPLICATION FOR PERMIT TO DRILL, DEEPEN, OR PLUG BACK

1A. TYPE OF WORK

DRILL ☒

DEEPEN ☐

PLUG BACK ☐

B. TYPE OF WELL

OIL  
WELL ☐

GAS  
WELL ☒

OTHER

SINGLE  
ZONE ☐

MULTIPLE  
ZONE ☒

2. NAME OF OPERATOR

El Paso Natural Gas Company

3. ADDRESS OF OPERATOR

PO Box 4289, Farmington, NM 87499

4. LOCATION OF WELL (Report location clearly and in accordance with any State requirements.)

At surface

790'S, 1525'W

At proposed prod. zone

14. DISTANCE IN MILES AND DIRECTION FROM NEAREST TOWN OR POST OFFICE\*

13 miles South of Gobernador, NM

15. DISTANCE FROM PROPOSED\*

LOCATION TO NEAREST  
PROPERTY OR LEASE LINE, FT.  
(Also to nearest drilg. unit line, if any)

790

16. NO. OF ACRES IN LEASE

Unit

18. DISTANCE FROM PROPOSED LOCATION\*  
TO NEAREST WELL, DRILLING, COMPLETED,  
OR APPLIED FOR, ON THIS LEASE, FT.

500'

19. PROPOSED DEPTH

7730'

17. NO. OF ACRES ASSIGNED  
TO THIS WELL

316.31/316.31  
W 320.00/320.00

20. ROTARY OR CABLE TOOLS

Rotary

21. ELEVATIONS (Show whether DF, RT, GR, etc.)

6544'GL

DRILLING OPERATIONS AUTHORIZED ARE  
SUBJECT TO COMPLIANCE WITH ATTACHED

22. APPROX. DATE WORK WILL START\*

23.

"GENERAL REQUIREMENTS"  
PROPOSED CASING AND CEMENTING PROGRAM

This action is subject to technical and  
procedural review pursuant to 43 CFR 3165.3  
and appeal pursuant to 43 CFR 3165.4.

SIZE OF HOLE	SIZE OF CASING	WEIGHT PER FOOT	SETTING DEPTH	
17 1/2"	13 3/8"	48.0#	200'	307 cf circ.surface
12 1/2"	9 5/8"	40.0#	3600'	635 cf cover Ojo Alamo
8 3/4"	7"	23.0#	6065'	677 cf circ.liner
6 1/4"	4 1/2"	11.6#	7730'	272 cf fill liner.

Selectively perforate and sand water fracture the Mesa Verde and Dakota formations

A 3000 psi WP and 6000 psi test double gate preventer equipped with blind and pipe rams will be used for blow out prevention on this well.

This gas is dedicated.

The W/2 of Section 29 is dedicated to this well.

RECEIVED  
OCT 15 1985

IN ABOVE SPACE DESCRIBE PROPOSED PROGRAM: If proposal is to deepen or plug back, give data on present production zone and proposed new productive zone. If proposal is to drill or deepen directionally, give pertinent data on subsurface locations and measured and true vertical depths. Give blowout preventer program, if any.

24.

SIGNED

*Reggie Doah*

TITLE

Drilling Clerk

DATE

APPROVED  
AS AMENDED

(This space for Federal or State office use)

PERMIT NO.

APPROVAL DATE

APPROVED BY

TITLE

DATE

CONDITIONS OF APPROVAL, IF ANY:

OCT 09 1985

/s/ J. Stan McKee

for M. MILLENBACH  
AREA MANAGER

NMOCC

\*See Instructions On Reverse Side

NEW MEXICO OIL CONSERVATION COMMISSION  
WELL LOCATION AND ACREAGE DEDICATION PLAT

Form C-102  
Supersedes C-12  
Effective 1-1-65

All distances must be from the outer boundaries of the Section.

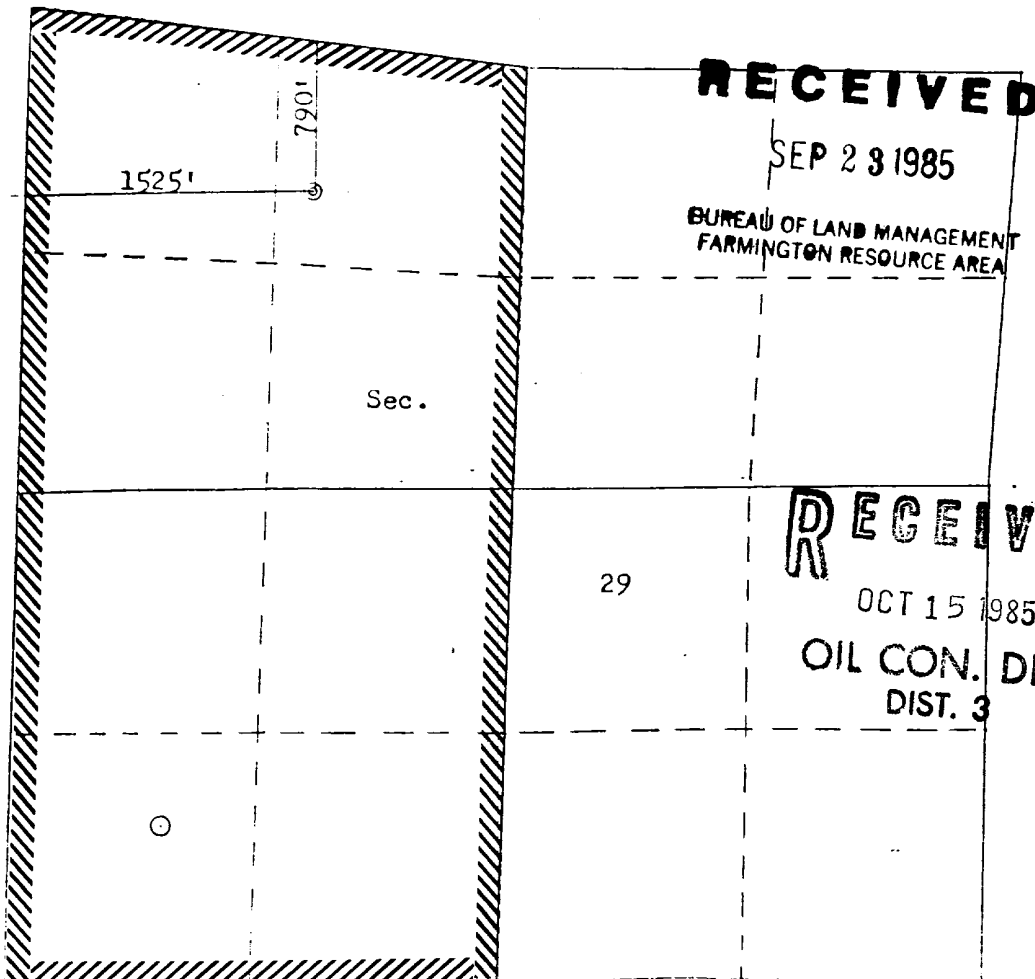
Operator EL PASO NATURAL GAS COMPANY			Lease SAN JUAN 27-5 UNIT (SF 079392)		Well No. 165M
Unit Letter C	Section 29	Township 27N	Range 5W	County Rio Arriba	
Actual Footage Location of Well: 790 feet from the North line and 1525 feet from the West line					
Ground Level Elev: 6544	Producing Formation Dakota/Mesa Verde		Pool Basin/Blanco		Dedicated Acreage: 316.31/316.31 Acres

- Outline the acreage dedicated to the subject well by colored pencil or hachure marks on the plat below.
- If more than one lease is dedicated to the well, outline each and identify the ownership thereof (both as to working interest and royalty).
- If more than one lease of different ownership is dedicated to the well, have the interests of all owners been consolidated by communitization, unitization, force-pooling, etc?

☒ Yes ☐ No If answer is "yes," type of consolidation Unitization

If answer is "no," list the owners and tract descriptions which have actually been consolidated. (Use reverse side of this form if necessary.)

No allowable will be assigned to the well until all interests have been consolidated (by communitization, unitization, forced-pooling, or otherwise) or until a non-standard unit, eliminating such interests, has been approved by the Commission. Note: Plat reissued to show addition of Mesa Verde formation. 9-18-85



Scale: 1"=1000'

CERTIFICATION

I hereby certify that the information contained herein is true and complete to the best of my knowledge and belief.

Name Reggie Doak  
Drilling Clerk

Position  
El Paso Natural Gas

Company

Date 9-20-85

I hereby certify that the well location shown on this plat was plotted from field notes of actual surveys made by me or under my supervision, and that the same is true and correct to the best of my knowledge and belief.

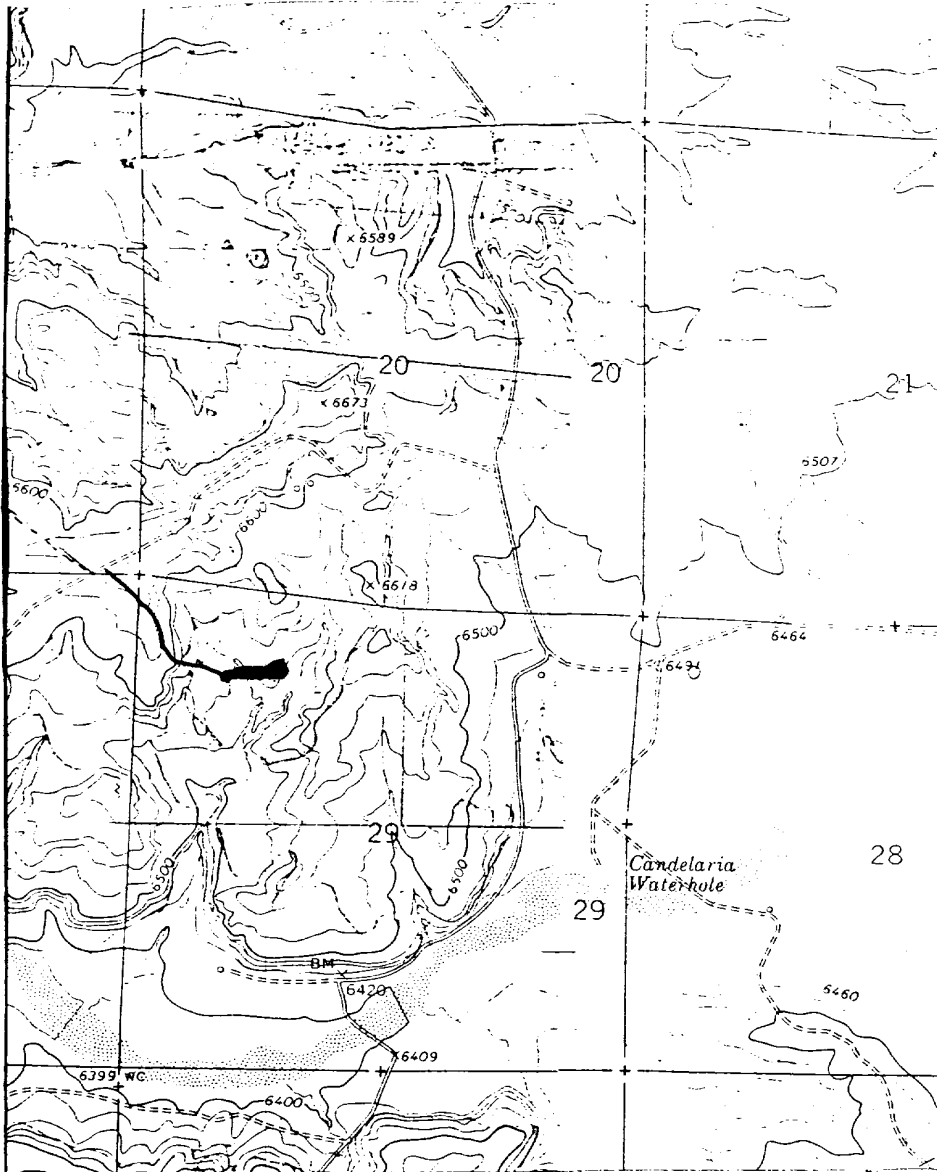
Date Surveyed  
September 10, 1985

Registered Professional Engineer  
and Land Surveyor

Fred B. Kerr Jr.  
Fred B. Kerr Jr.

3-50

San Juan 27-5 U. #165M  
NENW 29-27-5 (MD)



Map #1

# LEGEND OF RIGHT-OF-WAYS

EXISTING ROADS —————  
 EXISTING PIPELINES + + +  
 EXISTING ROAD & PIPELINE + + +  
 PROPOSED ROADS —————  
 PROPOSED PIPELINES + + +  
 PROPOSED ROAD & PIPELINE + + +