

UNITED STATES
DEPARTMENT OF THE INTERIOR
BUREAU OF LAND MANAGEMENT

APPLICATION FOR PERMIT TO DRILL, DEEPEN, OR PLUG BACK

1a. TYPE OF WORK

DRILL ☒

DEEPEN ☐

PLUG BACK ☐

b. TYPE OF WELL

OIL
WELL ☐

GAS
WELL ☒

OTHER

SINGLE
ZONE ☒

MULTIPLE
ZONE ☐

2. NAME OF OPERATOR

El Paso Natural Gas Company

3. ADDRESS OF OPERATOR

PO Box 4289, Farmington, NM 87499

4. LOCATION OF WELL (Report location clearly and in accordance with any State requirements.)

At surface

1520'N, 1570'E

At proposed prod. zone

14. DISTANCE IN MILES AND DIRECTION FROM NEAREST TOWN OR POST OFFICE*

8 miles SE of Gobernador, NM

BUREAU OF LAND MANAGEMENT
FARMINGTON RESOURCE AREA

15. DISTANCE FROM PROPOSED*

LOCATION TO NEAREST
PROPERTY OR LEASE LINE, FT.
(Also to nearest drlg. unit line, if any)

1520'

16. NO. OF ACRES IN LEASE

Unit 960

17. NO. OF ACRES ASSIGNED
TO THIS WELL

320.00

18. DISTANCE FROM PROPOSED LOCATION*

TO NEAREST WELL, DRILLING, COMPLETED,
OR APPLIED FOR, ON THIS LEASE, FT.

400

19. PROPOSED DEPTH

6685'

20. ROTARY OR CABLE TOOLS

Rotary

21. ELEVATIONS (Show whether DE, RT, GR, etc.)

7238'GL

22. APPROX. DATE WORK WILL START*

This action is subject to technical and
procedural review pursuant to 43 CFR 3165.3
and appeal pursuant to 43 CFR 3165.4.

23. PROPOSED CASING AND CEMENTING PROGRAM
"GENERAL REQUIREMENTS"

| SIZE OF HOLE | SIZE OF CASING | WEIGHT PER FOOT | SETTING DEPTH | QUANTITY OF CEMENT |
|--------------|----------------|-----------------|---------------|---------------------------|
| 12 1/4" | 9 5/8" | 32.3# | 200' | 138 cu.ft.circulated |
| 8 3/4" | 7" | 20.0# | 4450' | 311 cu.ft.cover Ojo Alamo |
| 6 1/4" | 4 1/2" | 10.5# | 4300-6685' | 420 cu.ft.circ. liner |

Selectively perforate and sand water fracture the Mesa Verde formation.

A 3000 psi WP and 6000 psi test double gate preventer equipped with
blind and pipe rams will be used for blow out prevention on this well.

This gas is dedicated.

The E/2 of Section 10 is dedicated to this well.

RECEIVED
OCT 10 1985
OIL CON. DIV.
DIST. 3

IN ABOVE SPACE DESCRIBE PROPOSED PROGRAM: If proposal is to deepen or plug back, give data on present productive zone and proposed new productive zone. If proposal is to drill or deepen directionally, give pertinent data on subsurface locations and measured and true vertical depths. Give blowout preventer program, if any.

24.

SIGNED

Peggy L. Doal

TITLE

Drilling Clerk

DATE

9-20-85

(This space for Federal or State office use)

AS AMENDED

PERMIT NO.

APPROVAL DATE

APPROVED BY

TITLE

CONDITIONS OF APPROVAL, IF ANY:

OCT 08 1985
(Sgd.) MAT MILLENBACH
AREA MANAGER

NMOCC

*See Instructions On Reverse Side

NEW MEXICO OIL CONSERVATION COMMISSION
WELL LOCATION AND ACREAGE DEDICATION PLAT

Form C-102
Supersedes C-128
Effective 1-1-65

All distances must be from the outer boundaries of the Section.

| | | | | | |
|--|--|------------------------|---|--|-------------------------|
| Operator EL PASO NATURAL GAS COMPANY | | | Lease SAN JUAN 27-5 UNIT (SF 079491A) | | Well No. 101A |
| Unit Letter G | Section 10 | Township 27N | Range 5W | County Rio Arriba | |
| Actual Footage Location of Well: 1520 feet from the North line and 1570 feet from the East line | | | | | |
| Ground Level Elev: 7239 | Producing Formation Mesa Verde | | Pool Blanco | Dedicated Acreage: 320 Acres | |

- Outline the acreage dedicated to the subject well by colored pencil or hachure marks on the plat below.
- If more than one lease is dedicated to the well, outline each and identify the ownership thereof (both as to working interest and royalty).
- If more than one lease of different ownership is dedicated to the well, have the interests of all owners been consolidated by communitization, unitization, force-pooling, etc?

☒ Yes ☐ No If answer is "yes," type of consolidation Unitization

If answer is "no," list the owners and tract descriptions which have actually been consolidated. (Use reverse side of this form if necessary.)

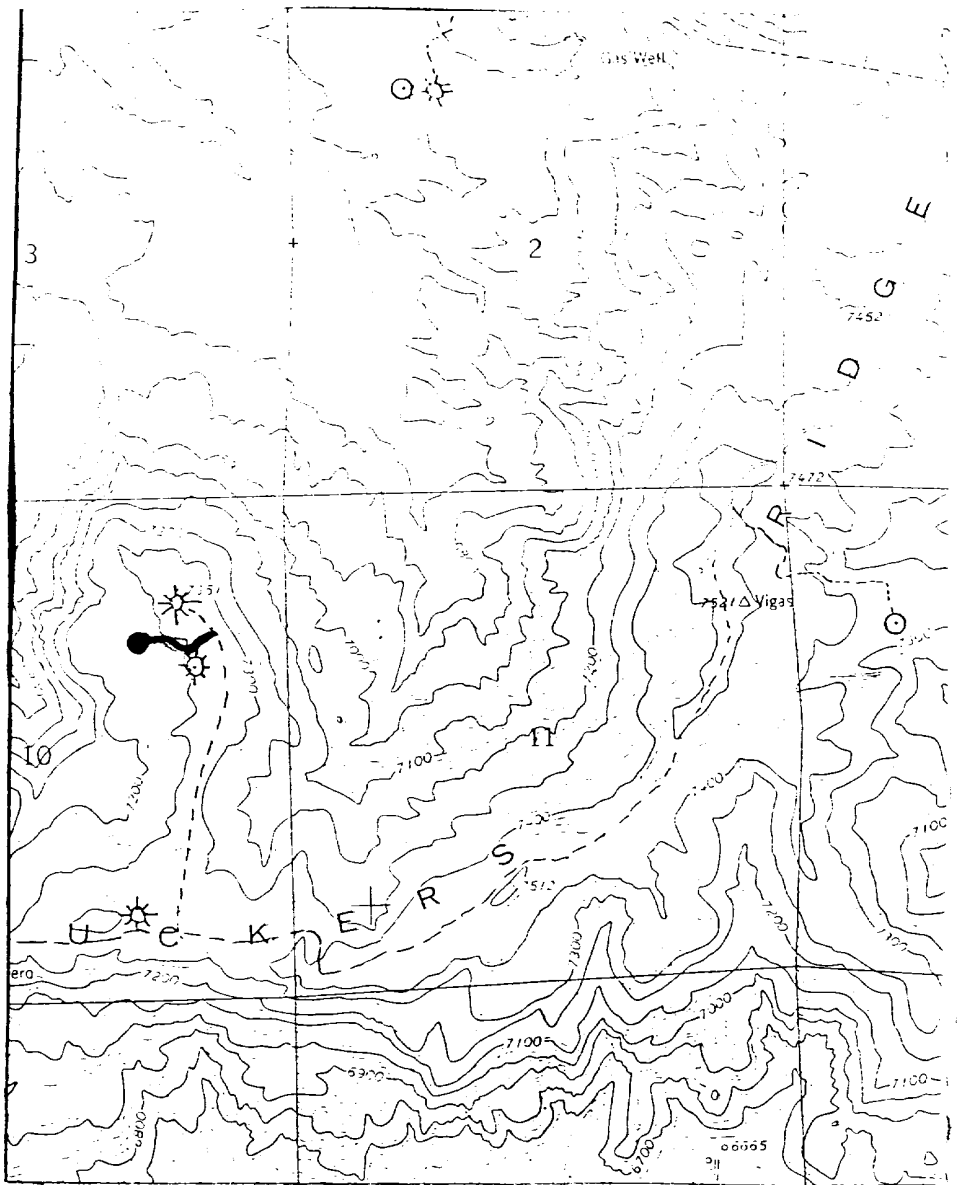
No allowable will be assigned to the well until all interests have been consolidated (by communitization, unitization, forced-pooling, or otherwise) or until a non-standard unit, eliminating such interests, has been approved by the Commission.

| | | |
|---|--|----|
| RECEIVED SEP 21 1985 BUREAU OF LAND MANAGEMENT FARMINGTON RESOURCE AREA | | |
| Sec. | | |
| RECEIVED OCT 10 1985 OIL CON. DIV DIST. 3 | | 10 |

Scale: 1"=1000'

| | |
|---|----------------------------|
| CERTIFICATION I hereby certify that the information contained herein is true and complete to the best of my knowledge and belief. | |
| Name | Drilling Clerk |
| Position | El Paso Natural Gas |
| Company | 9-19-85 |
| Date | |
| I hereby certify that the well location shown on this plat was plotted from field notes of actual surveys made by me or under my supervision, and that the same is true and correct to the best of my knowledge and belief. | |
| Date Surveyed | September 3, 1985 |
| Registered Professional Engineer and Land Surveyor | Fred B. Kerr Jr. |
| Certificate No. | 3750 |

San Juan 27-5 U. #101A
SWNE 10-27-5 (MV)



Map #1

LEGEND OF RIGHT-OF-WAYS

EXISTING ROADS

EXISTING PIPELINES

EXISTING ROAD & PIPELINE

PROPOSED ROADS

PROPOSED PIPELINES

PROPOSED ROAD & PIPELINE

