

UNITED STATES
DEPARTMENT OF THE INTERIOR
GEOLOGICAL SURVEY

30-039-24003

APPLICATION FOR PERMIT TO DRILL, DEEPEN, OR PLUG BACK

1a. TYPE OF WORK
DRILL ☒ DEEPEN ☐ PLUG BACK ☐
b. TYPE OF WELL
OIL WELL ☐ GAS WELL ☒ OTHER ☐ SINGLE ZONE ☐ MULTIPLE ZONE ☒

2. NAME OF OPERATOR
Tenneco Oil Company

3. ADDRESS OF OPERATOR
P. O. Box 3249, Englewood, CO 80155

4. LOCATION OF WELL (Report location clearly and in accordance with any State requirements.)
At surface 635' FSL, 790' FEL
At proposed prod. zone

RECEIVED
JAN 08 1986

14. DISTANCE IN MILES AND DIRECTION FROM NEAREST TOWN OR POST OFFICE
17 miles SE Blanco, NM

BUREAU OF LAND MANAGEMENT
FARMINGTON RESOURCE AREA

15. DISTANCE FROM PROPOSED* LOCATION TO NEAREST PROPERTY OR LEASE LINE, FT.
(Also to nearest drlg. unit line, if any) 635'

16. NO. OF ACRES IN LEASE
1,600 A

17. NO. OF ACRES ASSIGNED TO THIS WELL
160/320-A E 319.25

18. DISTANCE FROM PROPOSED LOCATION* TO NEAREST WELL, DRILLING, COMPLETED, OR APPLIED FOR, ON THIS LEASE, FT.

19. PROPOSED DEPTH
+/- 7336' KB

20. ROTARY OR CABLE TOOLS
Rotary

21. ELEVATIONS (Show whether DF, RT, GR, etc.)
6211' KB DRILLING OPERATIONS AUTHORIZED ARE

22. APPROX. DATE WORK WILL START*
ASAP

23. SUBJECT TO COMPLIANCE WITH ATTACHED PROPOSED CASING AND CEMENTING PROGRAM

This action is subject to technical and procedural review pursuant to 43 CFR 3165.3 and appeal pursuant to 43 CFR 3165.4.

SIZE OF HOLE	SIZE OF CASING	WEIGHT PER FOOT	SETTING DEPTH	
12 1/4"	9 5/8"	36.0#	+/- 280'	200 sx, 236 CF
8 3/4"	7"	23.0#	+/- 3250'	585 sx, 1010 CF
6 1/4"	4 1/2"	11.60 & 10.50	+/- 7336'	435 sx, 734 CF

See attachments

The gas is dedicated.

RECEIVED
FEB 27 1986
OIL CON. DIV.
DIST.

IN ABOVE SPACE DESCRIBE PROPOSED PROGRAM: If proposal is to deepen or plug back, give data on present productive zone and proposed new productive zone. If proposal is to drill or deepen directionally, give pertinent data on subsurface locations and measured and true vertical depths. Give blowout preventer program, if any.

24. SIGNED John McKinney TITLE Senior Regulatory Analyst DATE 1/7/86

(This space for Federal or State office use)

PERMIT NO. APPROVAL DATE

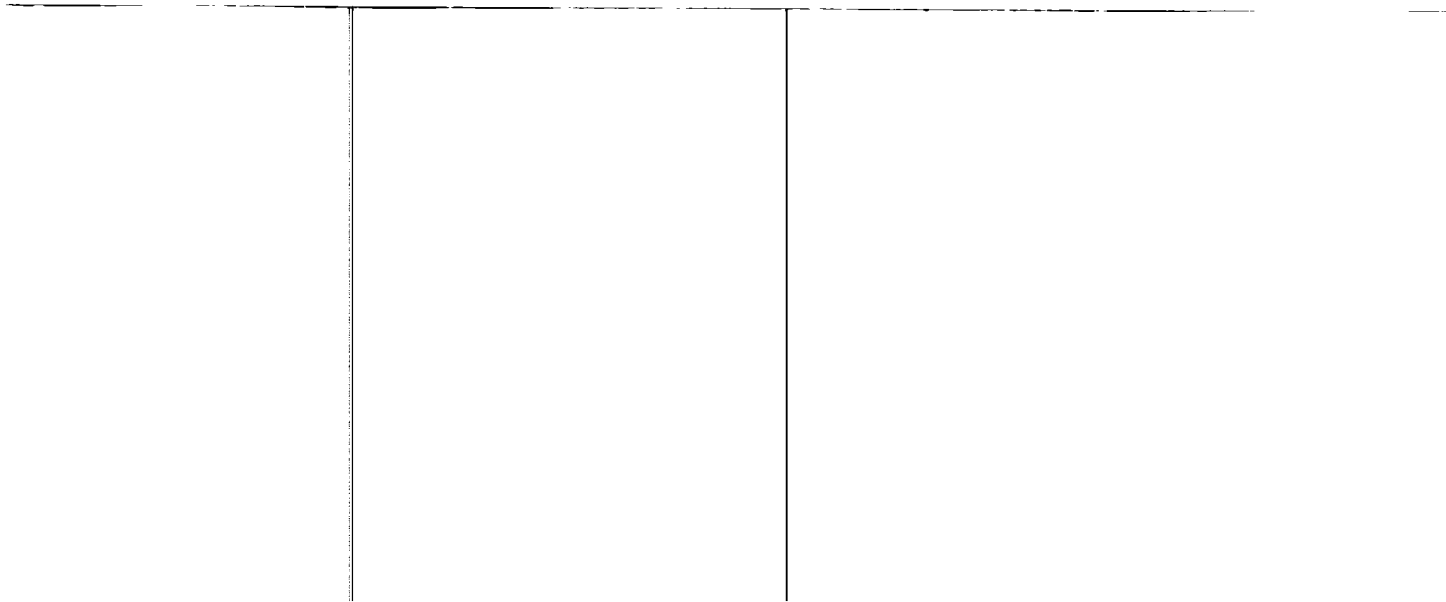
APPROVED BY TITLE DATE

CONDITIONS OF APPROVAL, IF ANY:

Head E-104
for N/SK

APPROVED
ASAP
DATE
FARM. MILE T. H
AREA MANAGER

7-1000



NEW MEXICO OIL CONSERVATION COMMISSION
WELL LOCATION AND ACREAGE DEDICATION PLAT

Form C-102
Supersedes C-128
Effective 1-1-65

All distances must be from the outer boundaries of the Section.

Operator TENNECO OIL CO.		Lease SAN JUAN 28-7 UNIT		Well No. 182E
Unit Letter P	Section 3	Township 27N	Range 7W	County Rio Arriba
Actual Footage Location of Well: 635 feet from the South line and 790 feet from the East line				
Ground Level Elev. 6211	Producing Formation Pictured Cliffs/Dakota	Pool S. Blanco P.C./Basin Dakota	Dedicated Acreage: 319.25 Acres 160/320	

1. Outline the acreage dedicated to the subject well by colored pencil or hachure marks on the plat below.

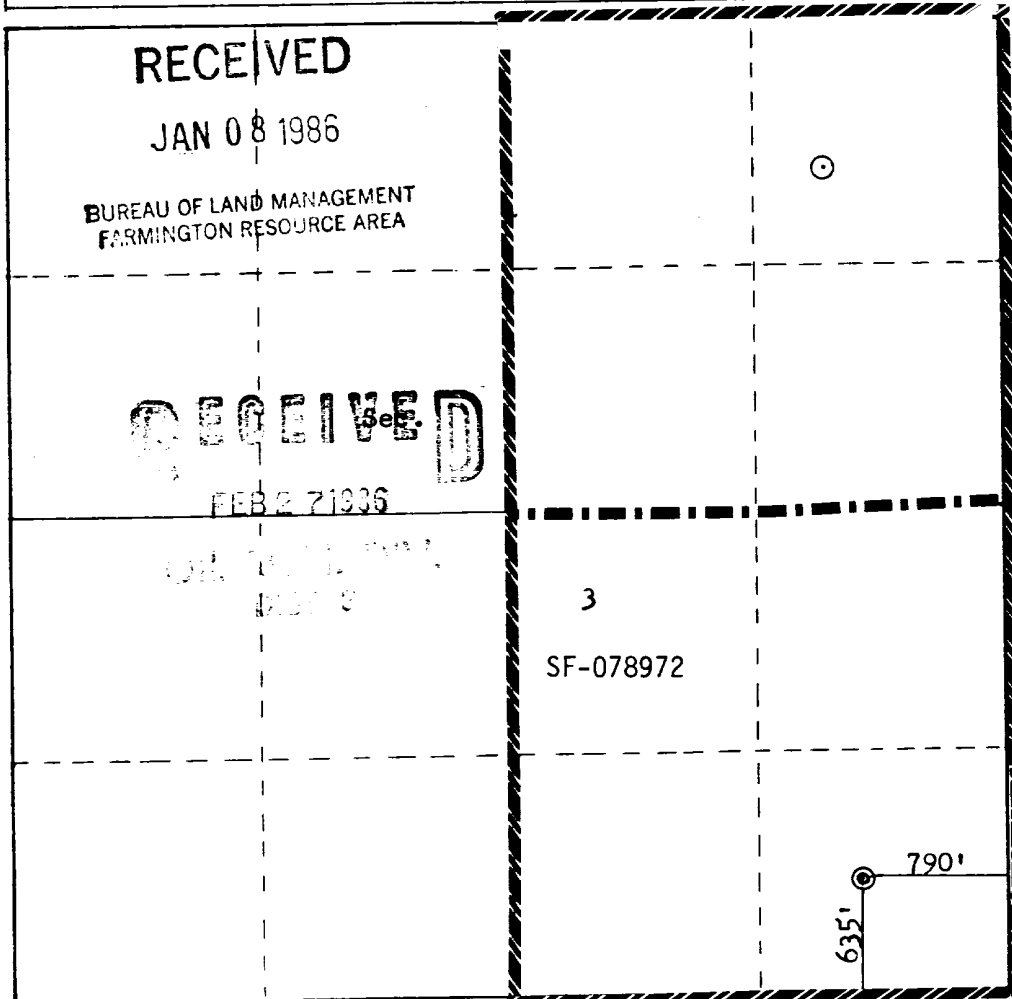
2. If more than one lease is dedicated to the well, outline each and identify the ownership thereof (both as to working interest and royalty).

3. If more than one lease of different ownership is dedicated to the well, have the interests of all owners been consolidated by communitization, unitization, force-pooling, etc?

☒ Yes ☐ No If answer is "yes," type of consolidation Unitization

If answer is "no," list the owners and tract descriptions which have actually been consolidated. (Use reverse side of this form if necessary.) _____

No allowable will be assigned to the well until all interests have been consolidated (by communitization, unitization, forced-pooling, or otherwise) or until a non-standard unit, eliminating such interests, has been approved by the Commission.

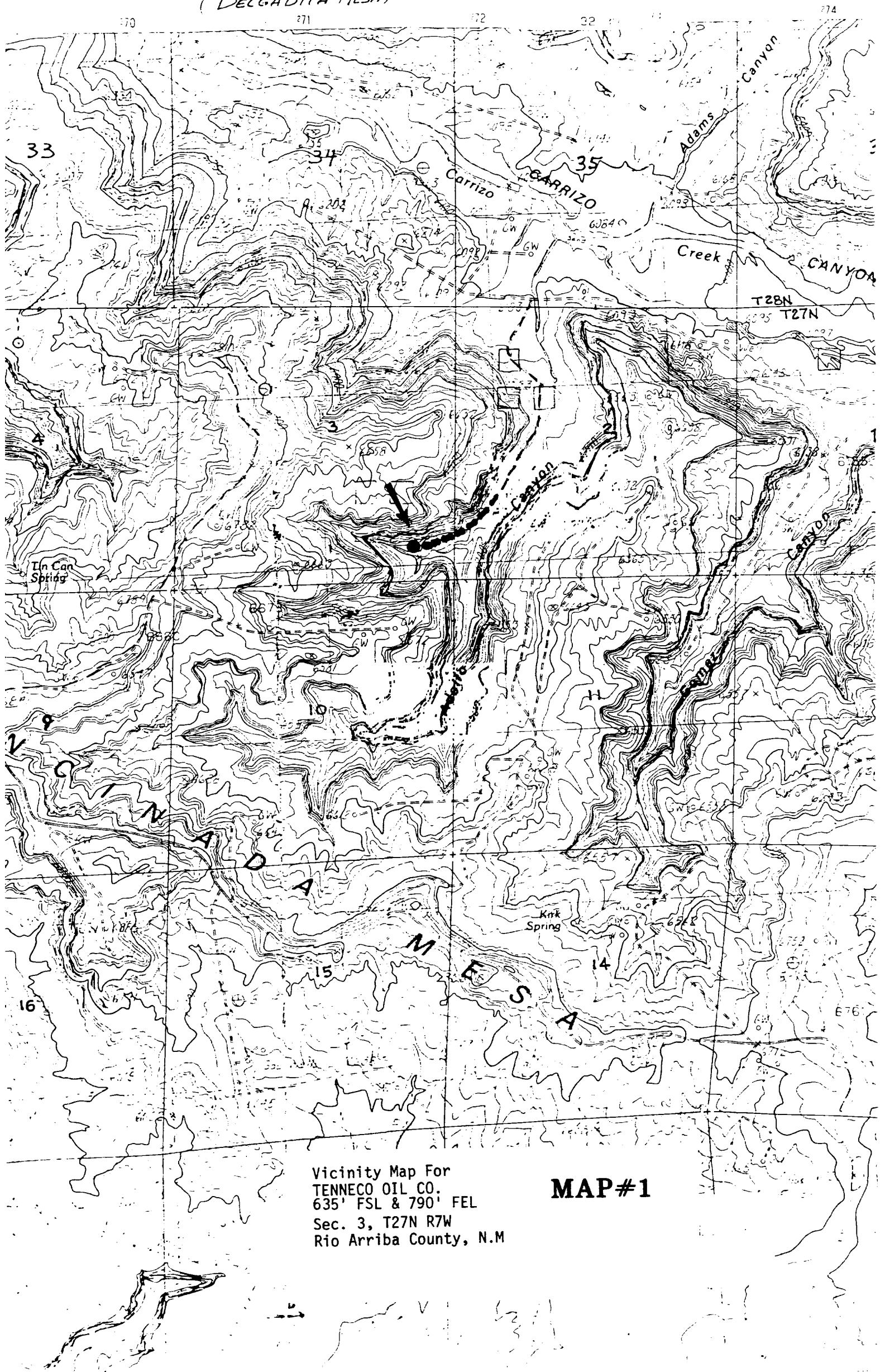


Scale: 1"=1000'

CERTIFICATION	
I hereby certify that the information contained herein is true and complete to the best of my knowledge and belief.	
<i>Scott McKinney</i>	
Name	Scott McKinney
Position	Sr. Regulatory Analyst
Company	Tenneco Oil Co.
Date	January 7, 1986
I hereby certify that the well location shown on this plat was plotted from field notes of actual surveys made by me or under my supervision, and that the same is true and correct to the best of my knowledge and belief.	
Date Surveyed	August 19, 1985
Registered Professional Engineer and Land Surveyor	
<i>Fred B. Kerr Jr.</i>	
Certificate No.	3950

--	--	--

(DELGADITA MESA)



Vicinity Map For
TENNECO OIL CO.
635' FSL & 790' FEL
Sec. 3, T27N R7W
Rio Arriba County, N.M

MAP#1