

UNITED STATES
DEPARTMENT OF THE INTERIOR
BUREAU OF LAND MANAGEMENT

APPLICATION FOR PERMIT TO DRILL, DEEPEN, OR PLUG BACK

1a. TYPE OF WORK
DRILL ☒ DEEPEN ☐ PLUG BACK ☐
b. TYPE OF WELL
OIL WELL ☐ GAS WELL ☒ OTHER ☐ SINGLE ZONE ☒ MULTIPLE ZONE ☐
2. NAME OF OPERATOR
Union Oil Company of California
3. ADDRESS OF OPERATOR
P. O. Box 2620 - Casper, WY 82602-2620
4. LOCATION OF WELL (Report location clearly and in accordance with any State requirements.)
At surface 790' FSL & 1810' FWL (SE SW)
At proposed prod. zone
Straight Hole
14. DISTANCE IN MILES AND DIRECTION FROM NEAREST TOWN OR POST OFFICE*
39 miles southeast of Bloomfield, NM
15. DISTANCE FROM PROPOSED*
LOCATION TO NEAREST
PROPERTY OR LEASE LINE, FT.
(Also to nearest drig. unit line, if any) 790'
16. NO. OF ACRES IN LEASE 840
17. NO. OF ACRES ASSIGNED
TO THIS WELL S/320
18. DISTANCE FROM PROPOSED LOCATION*
TO NEAREST WELL, DRILLING, COMPLETED,
OR APPLIED FOR, ON THIS LEASE, FT. 200'
19. PROPOSED DEPTH 3353'
20. ROTARY OR CABLE TOOLS Rotary
21. ELEVATIONS (Show whether DF, RT, GR, etc.)
6610' GL (Ungraded)
22. APPROX. DATE WORK WILL START*
Upon Approval

This action is subject to technical and
procedural review pursuant to 43 CFR 3165.3
and appeal pursuant to 43 CFR 3165.4

PROPOSED CASING AND CEMENTING PROGRAM

DRILLING OPERATIONS AUTHORIZED ARE

SUBJECT TO COMPLIANCE WITH ATTACHED

"GENERAL REQUIREMENTS"

SIZE OF CASING	WEIGHT PER FOOT	SETTING DEPTH	QUANTITY OF CEMENT
12-1/4"	32.3#	±225'	150 SX
8-3/4"	20#	±3053'	60 SX
6-1/4"	23#	±3353'	6 SX

JUL 03 1989

Proposed Drilling Program

OIL CON. DIV.
DIST. 3

Drill 12-1/4" hole; run and cement 9-5/8" casing at ±225'. Drill 8-3/4" hole; run and cement 7" casing at ±3053'. Drill 6-1/4" hole and log; run and cement 5-1/2" liner at ±3353' (across Fruitland coal zone). Perforate and fracture stimulate Fruitland zone. Complete well with 2-7/8" production equipment. Place well on production.

Note: The BOP will be operationally tested each trip and each test logged.

IN ABOVE SPACE DESCRIBE PROPOSED PROGRAM: If proposal is to deepen or plug back, give data on present productive zone and proposed new productive zone. If proposal is to drill or deepen directionally, give pertinent data on subsurface locations and measured and true vertical depths. Give blowout preventer program, if any.

24.

SIGNED

TITLE District Drilling Supt. DATE 5-26-89

(This space for Federal or State office use)

PERMIT NO.

APPROVAL DATE

APPROVED BY

TITLE

CONDITIONS OF APPROVAL, IF ANY:

APPROVED
AS AMENDED

JUN 28 1989

AREA MANAGER

*See Instructions On Reverse Side

NEW MEXICO OIL CONSERVATION COMMISSION
WELL LOCATION AND ACREAGE DEDICATION PLAT

Form C-103
Supersedes C-101
Effective 1-1-81

All distances must be from the outer boundaries of the Section.

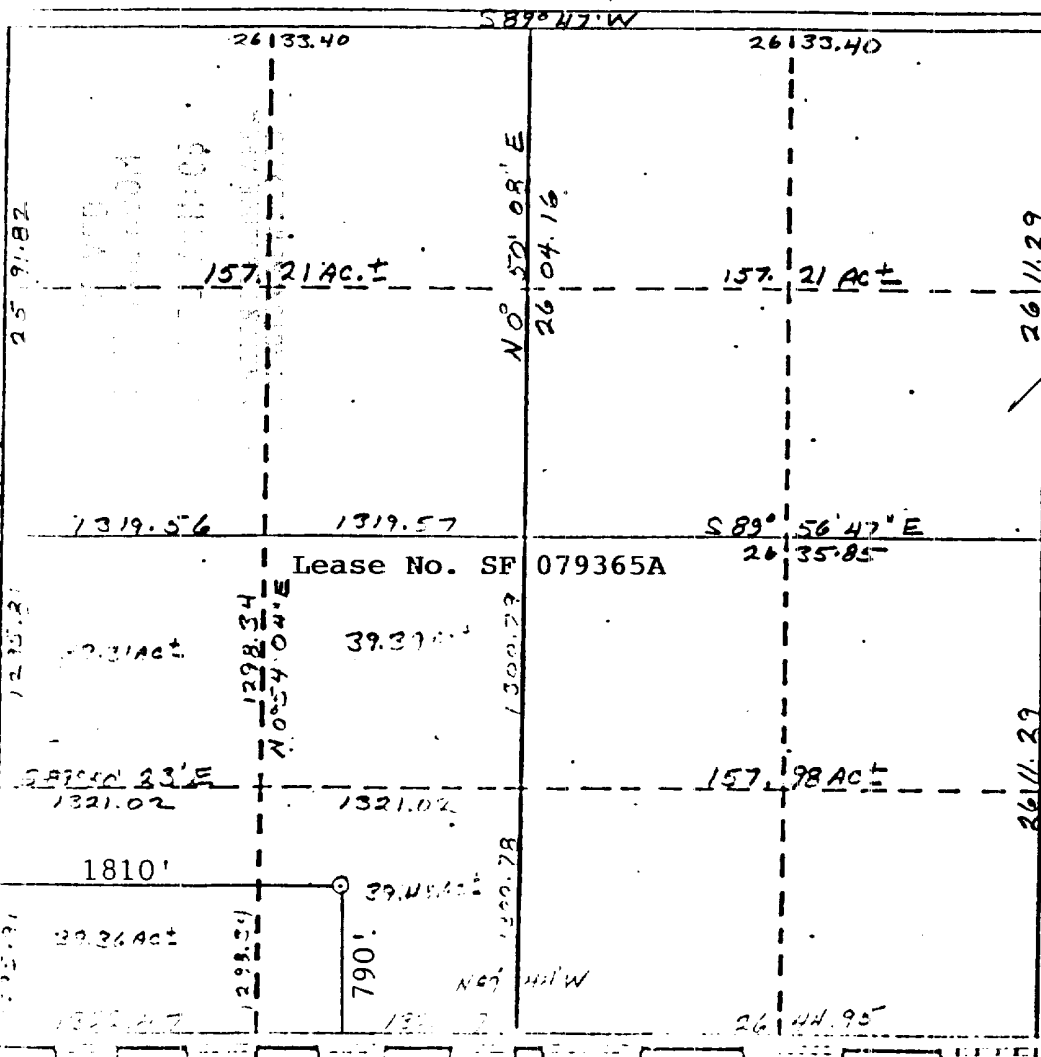
Operator UNOCAL			Lease RINCON UNIT			Well No. 242
Unit Letter N	Section 23	Township 27N	Range 6W	County Rio Arriba		
Actual Footage Location of Well: 790 feet from the South line and 1810 feet from the West line						
Ground Level Elev. 6610	Producing Formation Fruitland Coal		Pool Basin-Fruitland Coal		Dedicated Acreage: 320 acres	

1. Outline the acreage dedicated to the subject well by colored pencil or hatchure marks on the plat below.
2. If more than one lease is dedicated to the well, outline each and identify the ownership thereof (both as to work interest and royalty). Only one lease is dedicated to this well.
3. If more than one lease of different ownership is dedicated to the well, have the interests of all owners been consolidated by communitization, unitization, force-pooling, etc?

☒ Yes ☐ No If answer is "yes," type of consolidation Rincon Unit

If answer is "no," list the owners and tract descriptions which have actually been consolidated. (Use reverse side this form if necessary.)

No allowable will be assigned to the well until all interests have been consolidated (by communitization, unitization, forced-pooling, or otherwise) or until a non-standard unit, eliminating such interests, has been approved by the Commission.

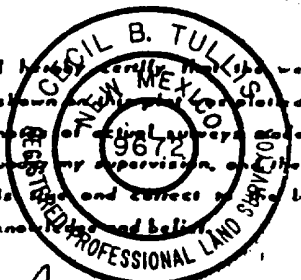


CERTIFICATION

I hereby certify that the information contained herein is true and complete to the best of my knowledge and belief.

Name [Signature]
Position District Drilling Supt
Company Union Oil Company of California
Date May 26, 1989

I hereby certify that the well location shown on this plat was plotted from the original survey made by me under my supervision, and that the location is correct to the best of my knowledge and belief.



Date Surveyed May 16, 1989
Registered Professional Engineer and/or Land Surveyor

Cecil B. Tullis

Commission No.

9672

Rincon Unit Well No. 242
Sec. 23, T.27N., R.6W.
Rio Arriba Co., New Mexico

