

UNITED STATES
DEPARTMENT OF THE INTERIOR
BUREAU OF LAND MANAGEMENT

APPLICATION FOR PERMIT TO DRILL, DEEPEN, OR PLUG BACK

1a. TYPE OF WORK

DRILL ☒

DEEPEN ☐

PLUG BACK ☐

b. TYPE OF WELL

OIL
WELL ☐

GAS
WELL ☒

OTHER

SINGLE
ZONE ☒

MULTIPLE
ZONE ☐

2. NAME OF OPERATOR

Union Oil Company of California

JUN 12 1989

3. ADDRESS OF OPERATOR

P. O. Box 2620 - Casper, WY 82602-2620

4. LOCATION OF WELL (Report location clearly and in accordance with any State requirements) **RESOURCE AREA**

At surface

1850' FSL & 1850' FWL (NE SW)

At proposed prod. zone

Straight Hole

14. DISTANCE IN MILES AND DIRECTION FROM NEAREST TOWN OR POST OFFICE*

39 miles southeast of Bloomfield, NM

15. DISTANCE FROM PROPOSED*

LOCATION TO NEAREST
PROPERTY OR LEASE LINE, FT.
(Also to nearest drig. unit line, if any)

760'

16. NO. OF ACRES IN LEASE

920

17. NO. OF ACRES ASSIGNED

TO THIS WELL

320

18. DISTANCE FROM PROPOSED LOCATION*
TO NEAREST WELL, DRILLING, COMPLETED,
OR APPLIED FOR, ON THIS LEASE, FT.

200'

19. PROPOSED DEPTH

3265'

20. ROTARY OR CABLE TOOLS

Rotary

21. ELEVATIONS (Show whether DF, RT, GR, etc.)

6577' GL (Ungraded)

22. APPROX. DATE WORK WILL START*

Upon Approval

23. **PROPOSED CASING AND CEMENTING PROGRAM**

PROPOSED CASING AND CEMENTING PROGRAM

This action is subject to technical and
procedural review pursuant to 43 CFR 3165.3
and 3165.4.

SIZE OF HOLE	SIZE OF CASING	WEIGHT PER FOOT	SETTING DEPTH	QUANTITY OF CEMENT
12-1/4"	9-5/8"	32.3#	±225'	150 SX
8-3/4"	7"	20#	±3004'	620 SX
6-1/4"	5-1/2" L	23#	±3265'	75 SX

Proposed Drilling Program

OIL CON. DIV

Drill 12-1/4" hole; run and cement 9-5/8" casing **DIST ±325'**. Drill 8-3/4" hole; run and cement 7" casing at ±3004'. Drill 6-1/4" hole and log; run and cement 5-1/2" liner at ±3265' (across Fruitland coal zone). Perforate and fracture stimulate Fruitland zone. Complete well with 2-7/8" production equipment. Place well on production.

Note: The BOP will be operationally tested each trip and each test logged.

IN ABOVE SPACE DESCRIBE PROPOSED PROGRAM: If proposal is to deepen or plug back, give data on present productive zone and proposed new productive zone. If proposal is to drill or deepen directionally, give pertinent data on subsurface locations and measured and true vertical depths. Give blowout preventer program, if any.

24.

SIGNED

(This space for Federal or State office use)

TITLE District Drilling Supt.

DATE 6-6-89

PERMIT NO.

APPROVAL DATE

APPROVED BY

TITLE

CONDITIONS OF APPROVAL, IF ANY:

APPROVED
AS AMEND TO

DATE

*See Instructions On Reverse Side

Title 18 U.S.C. Section 1001, makes it a crime for any person knowingly and willfully to make to any department or agency of the United States any false, fictitious or fraudulent statements or representations as to any matter within its jurisdiction.

NEW MEXICO OIL CONSERVATION COMMISSION
WELL LOCATION AND ACREAGE DEDICATION PLAT

Form C-103
Supersedes C-101
Effective 1-1-83

All distances must be from the outer boundaries of the Section.

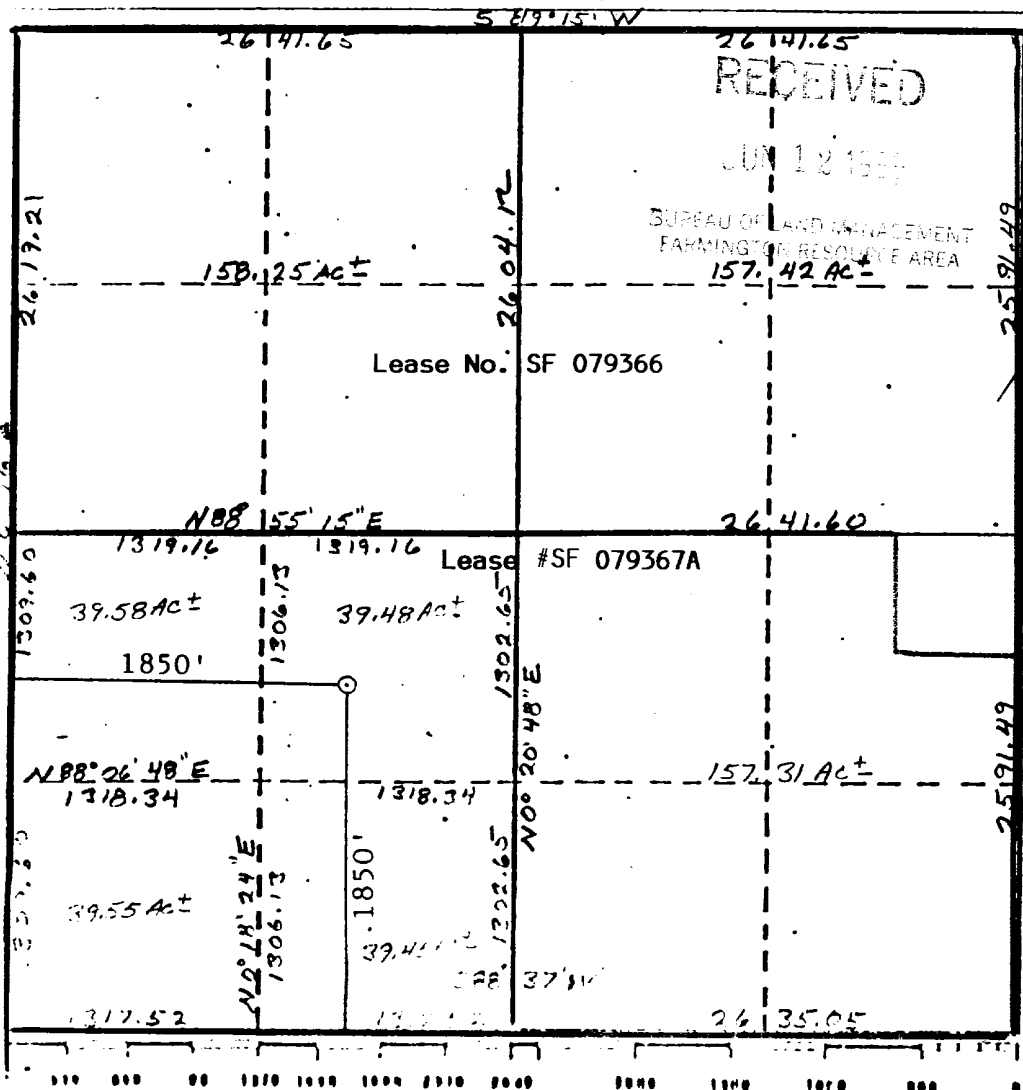
Operator UNOCAL			Lease RINCON UNIT		Well No. 243
Unit Letter K	Section 27	Township 27N	Range 6W	County Rio Arriba	
Actual Footage Location of Well:					
1850 feet from the South line and		1850 feet from the West line			
Ground Level Elev. 6577	Producing Formation Fruitland Coal	Pool Basin-Fruitland Coal	Dedicated Acreage: 320 Acres		

1. Outline the acreage dedicated to the subject well by colored pencil or hachure marks on the plat below.
2. If more than one lease is dedicated to the well, outline each and identify the ownership thereof (both as to working interest and royalty).
3. If more than one lease of different ownership is dedicated to the well, have the interests of all owners been consolidated by communitization, unitization, force-pooling, etc?

☒ Yes ☐ No If answer is "yes," type of consolidation Rincon Unit

If answer is "no," list the owners and tract descriptions which have actually been consolidated. (Use reverse side of this form if necessary.)

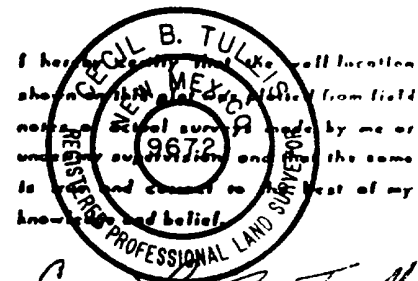
No allowable will be assigned to the well until all interests have been consolidated (by communitization, unitization, forced-pooling, or otherwise) or until a non-standard unit, eliminating such interests, has been approved by the Commission.



CERTIFICATION

I hereby certify that the information contained herein is true and complete to the best of my knowledge and belief.

Name Cecil B. Tullis
Position District Drilling Supt.
Company Union Oil Co. of California
Date June 6, 1989



Date Surveyed May 10, 1989
Registered Professional Engineer
and/or Land Surveyor

Cecil B. Tullis
Certificate No.

'9672

Rincon Unit Well No. 243
Sec. 27, T.27N., R.6W.
Rio Arriba Co., New Mexico

