

UNITED STATES  
DEPARTMENT OF THE INTERIOR  
BUREAU OF LAND MANAGEMENT

APPLICATION FOR PERMIT TO DRILL, DEEPEN, OR PLUG BACK

1a. TYPE OF WORK  
DRILL ☒ DEEPEN ☐ PLUG BACK ☐

b. TYPE OF WELL  
OIL WELL ☐ GAS WELL ☒ OTHER ☐

2. NAME OF OPERATOR  
Union Oil Company of California

3. ADDRESS OF OPERATOR  
1004 N. Big Spring St. #635, Midland, TX 79701-3340

4. LOCATION OF WELL (Report location clearly and in accordance with any State requirements.)  
At surface  
1465' FNL and 890' FEL, Sec 28, T27N, R6W  
At proposed prod. zone  
Same

14. DISTANCE IN MILES AND DIRECTION FROM NEAREST TOWN OR POST OFFICE\*  
Approximately 40 miles southeast of Bloomfield, N.M.

15. DISTANCE FROM PROPOSED\* LOCATION TO NEAREST PROPERTY OR LEASE LINE, FT.  
(Also to nearest drlg. unit line, if any) 890'

16. NO. OF ACRES IN LEASE 2605.33\*

17. NO. OF ACRES ASSIGNED TO THIS WELL E/320

18. DISTANCE FROM PROPOSED LOCATION\* TO NEAREST WELL, DRILLING, COMPLETED, OR APPLIED FOR, ON THIS LEASE, FT. 112'

19. PROPOSED DEPTH 3240'

20. ROTARY OR CABLE TOOLS Rotary

21. ELEVATIONS (Show whether DF, RT, GR, etc.)  
6568' GL

22. APPROX. DATE WORK WILL START\* ASAP

5. LEASE DESIGNATION AND SERIAL NO.  
SE-079364

6. IF INDIAN, ALLOTTEE OR TRIBE NAME

7. UNIT AGREEMENT NAME  
Rincon Unit

8. FARM OR LEASE NAME  
Rincon Unit

9. WELL NO.  
250

10. FIELD AND POOL, OR WILDCAT  
Basin Fruitland Coal

11. SEC., T., R., M., OR S.E.  
AND SURVEY OR AREA  
H Sec 28, T27N, R6W

12. COUNTY OR PARISH 13. STATE  
Rio Arriba N.M.

23. PROPOSED CASING AND CEMENTING PROGRAM

SIZE OF HOLE	SIZE OF CASING	WEIGHT PER FOOT	SETTING DEPTH	
12-1/4"	8-5/8"	24 #	225'	175 sacks to surface
7-7/8"	5-1/2"	17 #	3240'	410 sacks to surface

\*This action is subject to technical and procedural review pursuant to 43 CFR 3165.3 and appeal provisions of 43 CFR 3165.4.

Proposed Drilling Program

MIRU. Drill 12-1/4" hole with spud mud to 225'. Survey. Rig up and run casing and cement as outlined in attached drilling plan. WOC @ 18 hours. NUBOP, choke, and kill line (2000#) and test same plus casing. Drill out with 7-7/8" hole from 225' to T.D. with fresh water mud. Run surveys @ 500' intervals or first bit trip succeeding 500'. At T.D. log with DISFL, GR, SP, FDC, CNL-GR. Run and cement casing as outlined in attached drilling plan. RDMOL.

RECEIVED  
FEB 20 1990

OIL CON. DIV.  
DIST. 3

IN ABOVE SPACE DESCRIBE PROPOSED PROGRAM: If proposal is to deepen, plug back, give data on present productive zone and proposed new productive zone. If proposal is to drill or deepen directionally, give pertinent data on subsurface locations and measured and true vertical depths. Give blowout preventer program, if any.

24. SIGNED Chris Russell TITLE Agent for UNOCAL DATE 10/27/89

(This space for Federal or State office use)

PERMIT NO. \_\_\_\_\_ APPROVAL DATE \_\_\_\_\_

APPROVED BY \_\_\_\_\_ TITLE \_\_\_\_\_

CONDITIONS OF APPROVAL, IF ANY:

APPROVED  
AS AMENDED

FEB 14 1990

AREA MANAGER

NMOCD

\*See Instructions On Reverse Side

Submit to Appropriate  
District Office  
State Lease - 4 copies  
Fee Lease - 3 copies

State of New Mexico  
Energy, Minerals and Natural Resources Department

Form C-107  
Revised 1-1-89

OIL CONSERVATION DIVISION

DISTRICT I  
P.O. Box 1980, Hobbs, NM 88240

P.O. Box 2088  
Santa Fe, New Mexico 87504-2088

DISTRICT II  
P.O. Drawer DD, Artesia, NM 88210

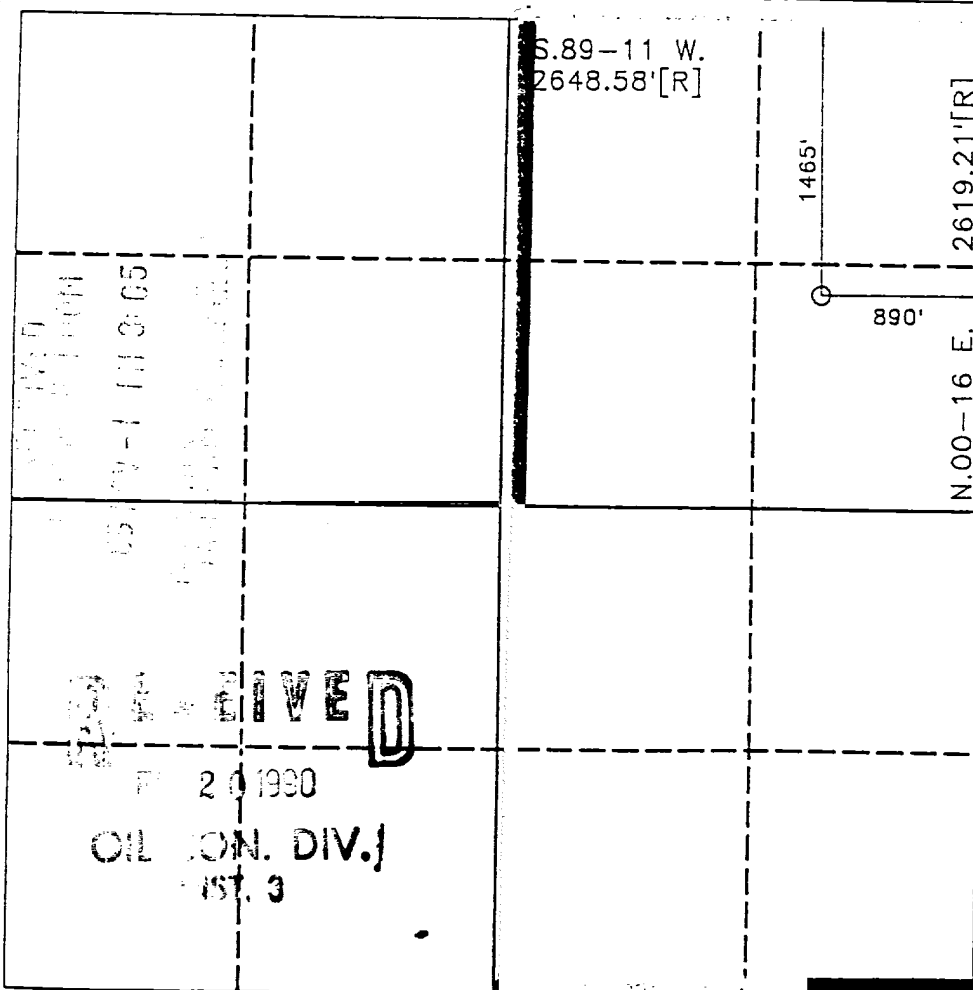
DISTRICT III  
1000 Rio Brazos Rd., Aztec, NM 87410

WELL LOCATION AND ACREAGE DEDICATION PLAT

All Distances must be from the outer boundaries of the section

Operator <b>Unocal, Inc.</b>			Lease <b>Rincon</b>		Well No. <b>Unit #250</b>
Unit Letter <b>H</b>	Section <b>28</b>	Township <b>T.27 N.</b>	Range <b>R. 6 W.</b>	County <b>Rio Arriba</b>	
Actual Footage Location of Well: <b>1465</b> feet from the <b>North</b> line and <b>890</b> feet from the <b>East</b> line					
Ground level Elev. <b>6568</b>	Producing Formation <b>Fruitland Coal</b>		Pool <b>Basin Fruitland Coal</b>	Dedicated Acreage: <b>320</b> Acres	

1. Outline the acreage dedicated to the subject well by colored pencil or hatchure marks on the plat below.
2. If more than one lease is dedicated to the well, outline each and identify the ownership thereof (both as to working interest and royalty).
3. If more than one lease of different ownership is dedicated to the well, have the interest of all owners been consolidated by communitization, unitization, force-pooling, etc.?  
☒ Yes ☐ No If answer is "yes" type of consolidation Unitization  
If answer is "no" list the owners and tract descriptions which have actually been consolidated. (Use reverse side of this form if necessary).  
No allowable will be assigned to the well until all interests have been consolidated (by communitization, unitization, forced-pooling, or otherwise) or until a non-standard unit, eliminating such interest, has been approved by the Division.



OPERATOR CERTIFICATION

I hereby certify that the information contained herein is true and complete to the best of my knowledge and belief.

Signature

**Chris Russell**

Printed Name

Agent  
Position

**UNOCAL**  
Company

**10/27/89**  
Date

Date

SURVEYOR CERTIFICATION

I hereby certify that the well location shown on this plat was plotted from field notes of actual surveys made by me or under my supervision, and that the same is true and correct to the best of my knowledge and belief.

Date Surveyed

Signature

Professional Surveyor

**R. Howard Daggett**  
9874

Certificate No. **9897**

Registered Professional  
Land Surveyor