

Form 3160-3
(November 1983)
(formerly 9-331C)

SUBMIT IN TRIPLICATE*
(Other instructions on
reverse side)

Form approved.
Budget Bureau No. 1004-0136
Expires August 31, 1985
30-039-24630

UNITED STATES
DEPARTMENT OF THE INTERIOR
BUREAU OF LAND MANAGEMENT

APPLICATION FOR PERMIT TO DRILL, DEEPEN, OR PLUG BACK

1a. TYPE OF WORK DRILL ☒ DEEPEN ☐ PLUG BACK ☐

b. TYPE OF WELL OIL WELL ☐ GAS WELL ☒ OTHER ☐ SINGLE ZONE ☒ MULTIPLE ZONE ☐

2. NAME OF OPERATOR Union Oil Company of California

3. ADDRESS OF OPERATOR 1004 N. Big Spring St. #635, Midland TX 79701-3340

4. LOCATION OF WELL (Report location clearly and in accordance with any State requirements.)
At surface

1525' FNL and 1840' FEL
At proposed prod. zone

Same

14. DISTANCE IN MILES AND DIRECTION FROM NEAREST TOWN OR POST OFFICE*

Approximately 40 miles southeast of Bloomfield, N.M.

15. DISTANCE FROM PROPOSED* LOCATION TO NEAREST PROPERTY OR LEASE LINE, FT. (Also to nearest drig. unit line, if any) 790'

18. NO. OF ACRES IN LEASE 2558.72'

19. PROPOSED DEPTH 3311'

20. ROTARY OR CABLE TOOLS Rotary

21. ELEVATIONS (Show whether DE, RT, GR, etc.) 6566' GR

22. APPROX. DATE WORK WILL START* ASAP

23. PROPOSED CASING AND CEMENTING PROGRAM

SIZE OF HOLE	SIZE OF CASING	WEIGHT PER FOOT	SETTING DEPTH
12-1/4"	8-5/8"	24 #	225'
7-7/8"	5-1/2"	17 #	3311'

17. NO. OF ACRES ASSIGNED TO THIS WELL E/320

20. ROTARY OR CABLE TOOLS Rotary

22. APPROX. DATE WORK WILL START* ASAP

Proposed Drilling Program

MIRU. Drill 12-1/4" hole with spud mud to 225'. Survey. Rig up and run casing and cement as outlined in attached drilling plan. WOC @ 18 hours. NUBOP, choke, and kill line (2000#) and test same plus casing. Drill out with 7-7/8" hole from 225' to T.D. with fresh water mud. Run surveys @ 500' intervals or first bit trip succeeding 500'. At T.D. log with DISFL, GR, SP, FDC, CNL-GR. Run and cement casing as outlined in attached drilling plan. RDMOL.

RECEIVED

FEB 20 1990

OIL CON. DIV.

IN ABOVE SPACE DESCRIBE PROPOSED PROGRAM: If proposal is to deepen or plug back, give data on present productive zone and proposed new productive zone. If proposal is to drill or deepen directionally, give pertinent data on well locations and measured and true vertical depths. Give blowout preventer program, if any.

24. SIGNED [Signature] TITLE Agent for UNOCAL DATE 10/27/89

(This space for Federal or State office use)

PERMIT NO.

APPROVAL DATE

APPROVED BY
CONDITIONS OF APPROVAL, IF ANY:

APPROVED
AS AMENDED

FEB 14 1990

AREA MANAGER

*See Instructions On Reverse Side

State of New Mexico
Energy, Minerals and Natural Resources Department

Form C-102
Revised 1-1-89

OIL CONSERVATION DIVISION

P.O. Box 2088
Santa Fe, New Mexico 87504-2088

1980, Hobbs, NM 88240

TRACT II
Drawer DD, Artesia, NM 88210

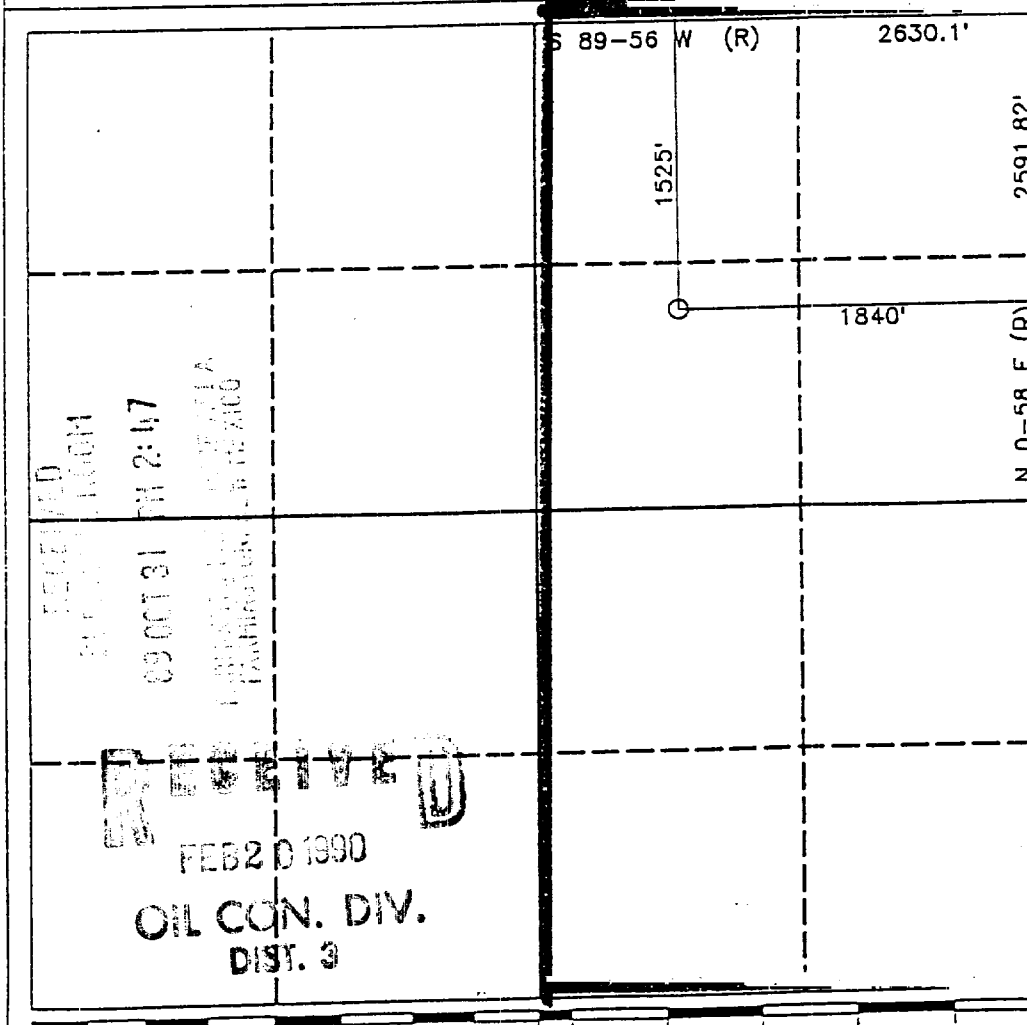
DISTRICT III
1000 Rio Brazos Rd., Aztec, NM 87410

WELL LOCATION AND ACREAGE DEDICATION PLAT

All Distances must be from the outer boundaries of the section

Operator Unocal, Inc.			Lease Rincon		Well No. Unit #245
Unit Letter G	Section 22	Township T.27 N.	Range R.6 W.	County RIO ARRIBA	NMPM
Actual Footage Location of Well: 1525' feet from the NORTH line and 1840' feet from the EAST line					
Ground level Elev. 6566	Producing Formation Fruitland Coal		Pool- Basin Fruitland Coal		Dedicated Acreage: 320 Acres

- Outline the acreage dedicated to the subject well by colored pencil or hatchure marks on the plat below.
- If more than one lease is dedicated to the well, outline each and identify the ownership thereof (both as to working interest and royalty).
- If more than one lease of different ownership is dedicated to the well, have the interest of all owners been consolidated by communitization, unitization, force-pooling, etc.?
☒ Yes ☐ No If answer is "yes" type of consolidation Unitization
If answer is "no" list the owners and tract descriptions which have actually been consolidated. (Use reverse side of this form if necessary.)
No allowable will be assigned to the well until all interests have been consolidated (by communitization, unitization, forced-pooling, or otherwise) or until a non-standard unit, eliminating such interest, has been approved by the Division.



OPERATOR CERTIFICATION

I hereby certify that the information contained herein is true and complete to the best of my knowledge and belief.

Signature
Chris Russell
Printed Name
Agent
Position
UNOCAL
Company
10/27/89
Date

SURVEYOR CERTIFICATION

I hereby certify that the well location shown on this plat was plotted from field notes, actual surveys made by me or under supervision, and that the same is true correct to the best of my knowledge and belief.

Date Surveyed
Signature & Seal of Professional Surveyor
R. Howard Daggett
Certificate No. **9679**
Professional Land Surveyor