

1983  
9-331C

SUBMIT IN TRIPLICATE\*  
(Other instructions on reverse side)

30-039-24632  
Form approved.  
Budget Bureau No. 1004-0136  
Expires August 31, 1985

UNITED STATES  
DEPARTMENT OF THE INTERIOR  
BUREAU OF LAND MANAGEMENT

APPLICATION FOR PERMIT TO DRILL, DEEPEN, OR PLUG BACK

1. TYPE OF WORK  
DRILL ☒ DEEPEN ☐ PLUG BACK ☐

2. TYPE OF WELL  
OIL WELL ☐ GAS WELL ☒ OTHER ☐ SINGLE ZONE ☒ MULTIPLE ZONE ☐

3. NAME OF OPERATOR  
Union Oil Company of California

4. ADDRESS OF OPERATOR  
1004 N. Big Spring St. #635, Midland, TX 79701-3340

5. LOCATION OF WELL (Report location clearly and in accordance with any State requirements.)\*  
At surface  
1622' FNL & 1118' FWL, Sec 26, T27N, R6W  
At proposed prod. zone  
Same

6. DISTANCE IN MILES AND DIRECTION FROM NEAREST TOWN OR POST OFFICE\*  
Approximately 40 miles southeast of Bloomfield, N.M.

7. DISTANCE FROM PROPOSED\* LOCATION TO NEAREST PROPERTY OR LEASE LINE, FT. (Also to nearest drig. unit line, if any)  
1188'

8. DISTANCE FROM PROPOSED LOCATION\* TO NEAREST WELL, DRILLING, COMPLETED, OR APPLIED FOR, ON THIS LEASE, FT.  
790'

9. ELEVATIONS (Show whether DF, RT, GR, etc.)  
6634' GL

10. NO. OF ACRES IN LEASE  
920'

11. NO. OF ACRES ASSIGNED TO THIS WELL  
320

12. ROTARY OR CABLE TOOLS  
Rotary

13. APPROX. DATE WORK WILL START\*  
ASAP

PROPOSED CASING AND CEMENTING PROGRAM				
SIZE OF HOLE	SIZE OF CASING	WEIGHT PER FOOT	SETTING DEPTH	AMOUNT OF CEMENT
12-1/4"	8-5/8"	24 #	225'	175 sacks to surface
7-7/8"	5-1/2"	17 #	3324'	410 sacks to surface

Proposed Drilling Program

MIRU. Drill 12-1/4" hole with spud mud to 225'. Survey. Rig up and run casing and cement as outlined in attached drilling plan. WOC @ 18 hours. NUBOP, choke, and kill line (2000#) and test same plus casing. Drill out with 7-7/8" hole from 225' to T.D. with fresh water mud. Run surveys @ 500' intervals or first bit trip succeeding 500'. At T.D. log with DISFL, GR, SP, FDC, CNL-GR. Run and cement casing as outlined in attached drilling plan. RDMOL.

IN ABOVE SPACE DESCRIBE PROPOSED PROGRAM: If proposal is to deepen or plug back, give data on present productive zone and proposed new productive zone. If proposal is to drill or deepen directionally, give pertinent data on subsurface conditions and measured and true vertical depths. Give blowout preventer program, if any.

24. SIGNED Chris Russell TITLE Agent for UNOCAL  
(This space for Federal or State office use)

AS AMENDED

FEB 14 1989

AREA MANAGER

PERMIT NO. \_\_\_\_\_ APPROVAL DATE \_\_\_\_\_  
APPROVED BY \_\_\_\_\_ TITLE \_\_\_\_\_ DATE \_\_\_\_\_  
CONDITIONS OF APPROVAL, IF ANY:

State of New Mexico  
Energy, Minerals and Natural Resources Department

Form C-102  
Revised 1-1-89

OIL CONSERVATION DIVISION  
P.O. Box 2088  
Santa Fe, New Mexico 87504-2088

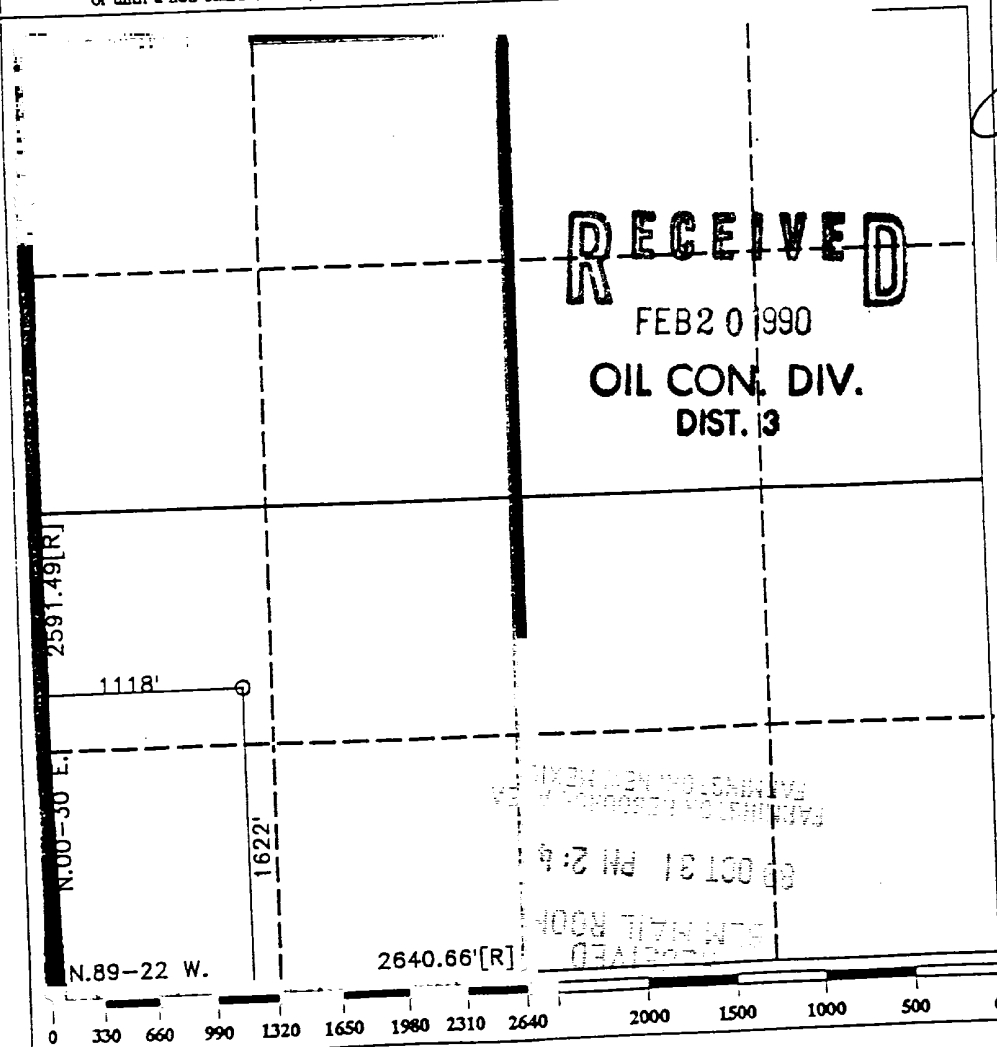
2 Hobbs, NM 88240

1111  
wer DD, Artesia, NM 88210

1111  
Rio Brazos Rd., Aztec, NM. 87410

WELL LOCATION AND ACREAGE DEDICATION PLAT  
All Distances must be from the outer boundaries of the section

Operator <b>Unocal, Inc.</b>		Lease <b>Rincon</b>		Well No. <b>Unit #248</b>	
Unit Letter <b>L</b>	Section <b>26</b>	Township <b>T.27 N.</b>	Range <b>R.6 W.</b>	County <b>Rio Arriba</b>	NMPM
Actual Footage Location of Well: <b>1622'</b> feet from the <b>South</b> line and <b>1118'</b> feet from the <b>West</b> line					
Ground level Elev. <b>6634'</b>		Producing Formation <b>Fruitland Coal</b>		Pool <b>Basin Fruitland Coal</b>	
				Dedicated Acreage: <b>320</b>	Acres
<p>1. Outline the acreage dedicated to the subject well by colored pencil or hatchure marks on the plat below.</p> <p>2. If more than one lease is dedicated to the well, outline each and identify the ownership thereof (both as to working interest and royalty).</p> <p>3. If more than one lease of different ownership is dedicated to the well, have the interest of all owners been consolidated by communitization, unitization, force-pooling, etc.?</p> <p><input checked="" type="checkbox"/> Yes <input type="checkbox"/> No If answer is "yes" type of consolidation <b>Unitization</b></p> <p>If answer is "no" list the owners and tract descriptions which have actually been consolidated. (Use reverse side of this form if necessary.)</p> <p>No allowable will be assigned to the well until all interests have been consolidated (by communitization, unitization, forced-pooling, or otherwise) or until a non-standard unit, eliminating such interest, has been approved by the Division.</p>					



OPERATOR CERTIFICATION

I hereby certify that the information contained herein is true and complete to the best of my knowledge and belief.

Signature  
**Chris Russell**  
Printed Name  
**Agent**  
Position  
**UNOCAL**  
Company  
**10/27/89**  
Date

SURVEYOR CERTIFICATION

I hereby certify that the well location shown on this plat was plotted from field notes actual surveys made by me or under supervision, and that the same is true and correct to the best of my knowledge and belief.

Date Surveyed  
**10-28-89**  
Signature & Seal of  
Professional Surveyor  
**R. Howard Daggett**  
9679  
Certificate No. PROFESSIONAL  
9679  
Registered Professional  
Land Surveyor