

Submit to Appropriate
District Office
State Lease - 6 copies
Fee Lease - 5 copies

State of New Mexico
Energy, Minerals and Natural Resources Department

Form C-101
Revised 1-1-89

OIL CONSERVATION DIVISION

P.O. Box 2088
Santa Fe, New Mexico 87504-2088

DISTRICT I
P.O. Box 1980, Hobbs, NM 88240

DISTRICT II
P.O. Drawer DD, Artesia, NM 88210

DISTRICT III
1000 Rio Brazos Rd., Aztec, NM 87410

API NO. (assigned by OCD on New Wells)

30-039-24667

5. Indicate Type of Lease

STATE ☒

FEE ☐

6. State Oil & Gas Lease No.

E-289-3

APPLICATION FOR PERMIT TO DRILL, DEEPEN, OR PLUG BACK

1a. Type of Work:

DRILL ☒

RE-ENTER ☐

DEEPEN ☐

PLUG BACK ☐

b. Type of Well:

OIL
WELL ☐

GAS
WELL ☒

OTHER

SINGLE
ZONE ☐

MULTIPLE
ZONE ☐

2. Name of Operator

Union Oil Co. of California

3. Address of Operator

P.O. Box 2074, Farmington, N.M. 87401

7. Lease Name or Unit Agreement Name

Rincon Unit

8. Well No.

274

9. Pool name or Wildcat

Basin Fruitland Coal

4. Well Location

Unit Letter H : 1850 Feet From The North Line and 1115 Feet From The East Line

Section 36

Township 27N

Range 7W

NMPM Rio Arriba

County

10. Proposed Depth

3185'

11. Formation

Fruitland Coal Rotary

12. Rotary or C.T.

13. Elevations (Show whether DF, RT, GR, etc.)

6556' GR

14. Kind & Status Plug. Bond

Current N.W.

15. Drilling Contractor

Arapahoe

16. Approx. Date Work will start

Spring, 1990

17. PROPOSED CASING AND CEMENT PROGRAM

N/320

SIZE OF HOLE	SIZE OF CASING	WEIGHT PER FOOT	SETTING DEPTH	SACKS OF CEMENT	EST. TOP
12 1/4"	8 5/8"	24.0 #	225'	175 sacks	surface
7 7/8"	4 1/2"	10.5 #	T.D.	410 sacks	surface

Proposed Drilling Program

MIRU. Drill 12-1/4" hole with spud mud to 225". Survey. Rig up and run casing and cement as outlined in attached drilling plan. WOC @ 18 hours. NUBOP, choke, and kill line (2000#) and test same plus casing. Drill out with 7-7/8" hole from 225' to T.D. with fresh water mud. Run surveys @ 500' intervals or first bit trip succeeding 500'. At T.D. log with DISFL, GR, SP, FDC, CNL-GR. Run and cement casing as outlined in attached drilling plan. RDMOL.

APPROVAL EXPIRES 9-30-90

UNLESS DRILLING IS COMMENCED.

SPUD NOTICE MUST BE SUBMITTED

WITHIN 10 DAYS

IN ABOVE SPACE DESCRIBE PROPOSED PROGRAM: IF PROPOSAL IS TO DEEPEN OR PLUG BACK, GIVE DATA ON PRESENT PRODUCTIVE ZONE AND PROPOSED NEW PRODUCTIVE ZONE. GIVE BLOWOUT PREVENTER PROGRAM, IF ANY.

RECEIVED

MAR 30 1990

OIL CON. DIV

DIST. 3

I hereby certify that the information above is true and complete to the best of my knowledge and belief.

SIGNATURE

Chris Russell

TITLE Agent

DATE 3/30/90

TYPE OR PRINT NAME

TELEPHONE NO.

(This space for State Use)

APPROVED BY

3-30-90

TITLE

SUPERVISOR DISTRICT 3

DATE MAR 30 1990

CONDITIONS OF APPROVAL, IF ANY:

Submit to Appropriate
District Office
State Lease - 4 copies
Fee Lease - 3 copies

State of New Mexico
Energy, Minerals and Natural Resources Department

Form C-102
Revised 1-1-89

OIL CONSERVATION DIVISION

P.O. Box 2088
Santa Fe, New Mexico 87504-2088

DISTRICT I
P.O. Box 1980, Hobbs, NM 88240

DISTRICT II
P.O. Drawer DD, Artesia, NM 88210

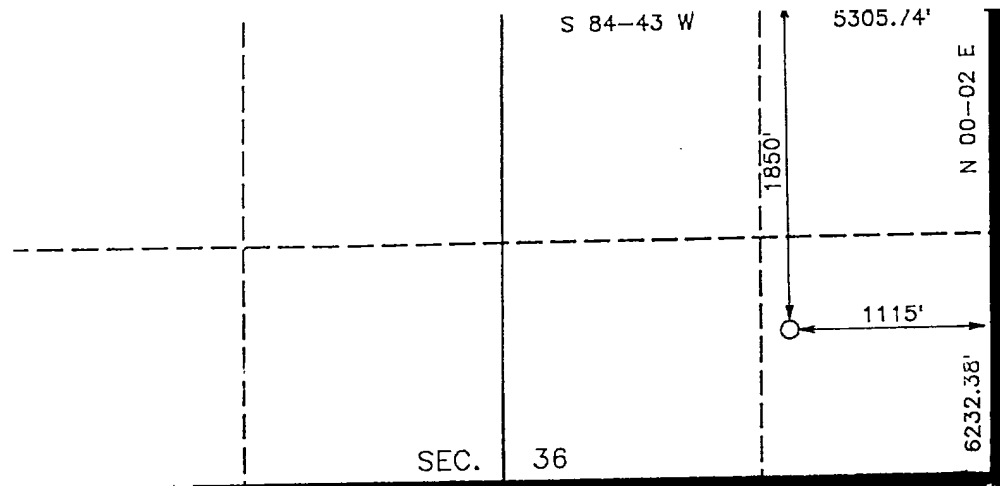
DISTRICT III
1000 Rio Brazos Rd., Aztec, NM 87410

WELL LOCATION AND ACREAGE DEDICATION PLAT

All Distances must be from the outer boundaries of the section

Operator UNION OIL CO. OF CALIFORNIA			Lease RINCON UNIT		Well No. 274
Unit Letter H	Section 36	Township T.27 N.	Range R.7 W.	County RIO ARRIBA COUNTY	
Actual Footage Location of Well: 1850 feet from the NORTH line and 1115 feet from the EAST line					
Ground level Elev. 6553	Producing Formation FRUITLAND COAL		Pool FRUITLAND COAL		Dedicated Acreage: 320 Acres

- Outline the acreage dedicated to the subject well by colored pencil or hatchure marks on the plat below.
- If more than one lease is dedicated to the well, outline each and identify the ownership thereof (both as to working interest and royalty).
- If more than one lease of different ownership is dedicated to the well, have the interest of all owners been consolidated by communitization,
☒ Yes ☐ No If answer is "yes" type of consolidation UNITIZATION
If answer is "no" list the owners and tract descriptions which have actually been consolidated. (Use reverse side of this form if necessary.)
No allowable will be assigned to the well until all interests have been consolidated (by communitization, unitization, forced-pooling, or otherwise) or until a non-standard unit, eliminating such interest, has been approved by the Division.



RECEIVED
MAR 30 1990
OIL CON. DIV
DIST. 3

OPERATOR CERTIFICATION
I hereby certify that the information contained herein is true and complete to the best of my knowledge and belief.

Signature
Chris Russell
Printed Name
Chris Russell
Position
AGENT
Company
UNOCA
Date
3/30/90

SURVEYOR CERTIFICATION
I hereby certify that the well location shown on this plat was plotted from field notes of actual surveys made by me or under my supervision, and that the same is true and correct to the best of my knowledge and belief.

Date Surveyed
MARCH 24, 1990
Signature and Seal of Professional Surveyor
Howard Dagge
HOWARD DAGGE
REGISTERED PROFESSIONAL SURVEYOR
Certificate No.
9879
Registered Professional Land Surveyor