

**UNITED STATES  
DEPARTMENT OF THE INTERIOR  
BUREAU OF LAND MANAGEMENT**

RECEIVED  
MAIL ROOM  
30-039-246711:33

**APPLICATION FOR PERMIT TO DRILL, DEEPEN, OR PLUG BACK**

1a. TYPE OF WORK DRILL		5. LEASE NUMBER SF-079366	
1b. TYPE OF WELL GAS		6. IF INDIAN, ALL. OR TRIBE NAME	
2. OPERATOR <i>23708</i> UNION OIL CO. OF CAL.		7. UNIT AGREEMENT NAME RINCON UNIT	
3. ADDRESS OF OPERATOR P O BOX 2074 FARMINGTON, NM, 87401 (505)-325-8786		8. FARM OR LEASE NAME RINCON <i>Unit 11510</i>	
4. LOCATION OF WELL  1200' FSL, 798' FWL		9. WELL NO. 264	
10. FIELD, POOL, OR WILDCAT BASIN FRUITLAND COAL <i>71627</i>		11. SEC. 19, T. 27N, R. 6W <i>M</i>	
14. DISTANCE FROM NEAREST TOWN 40 Miles SE of Bloomfield		12. COUNTY Rio Arriba	13. STATE New Mex.
15. DISTANCE FROM PROPOSED LOCATION TO NEAREST PROPERTY OR LEASE LINE 798'	16. ACRES IN LEASE <i>2,558.72</i> <i>5/319.40</i>	17. ACRES ASSIGNED TO WELL 320	
18. DISTANCE FROM PROPOSED LOCATION TO NEAREST WELL DRILLING, COMPLETED OR APPLIED FOR ON THIS LEASE: 785'	19. PROPOSED DEPTH  3212'	20. ROTARY OR CABLE TOOLS This action is subject to technical and procedural review pursuant to 43 CFR 3105.3 and appeal pursuant to 43 CFR 3105.4. Rotary	
21. ELEVATIONS (DF, FT, GR, ETC.)  6582' GL		22. APPROX. DATE WORK WILL BEGIN Spring 1990	
23. PROPOSED CASING AND CEMENTING PROGRAM SEE ATTACHED DRILLING PLAN			
24. AUTHORIZED BY: <i>[Signature]</i> AGENT			
DATE: <i>3/28/90</i>			

PERMIT NO.

**RECEIVED**

APPROVAL DATE

APPROVED BY

*APR 12 1990*

TITLE

DATE

**APPROVED  
AS AMENDED**

NOTE: THIS FORM IS ISSUED IN LIEU OF BLM FORM 3160

OIL CON. DIV.  
DIST. 3

*APR 10 1990*  
*[Signature]*  
AREA MANAGER

*of*  
*9*

NMOC

THE BOARD OF DIRECTORS OF THE  
AMERICAN RED CROSS  
HAS APPROVED THE FOLLOWING RESOLUTION

AS AMENDED  
APPROVED

1917

1917

1917

1917

Submit to Appropriate  
District Office  
State Lease - 4 copies  
Fee Lease - 3 copies

State of New Mexico  
Energy, Minerals and Natural Resources Department

Form C-102  
Revised 1-1-89

OIL CONSERVATION DIVISION

P.O. Box 2088  
Santa Fe, New Mexico 87504-2088

RECEIVED  
MAIL ROOM

30 MAR 28 AM 11:33

DISTRICT I  
P.O. Box 1980, Hobbs, NM 88240

DISTRICT II  
P.O. Drawer DD, Artesia, NM 88210

DISTRICT III  
1000 Rio Brazos Rd., Aztec, NM 87410

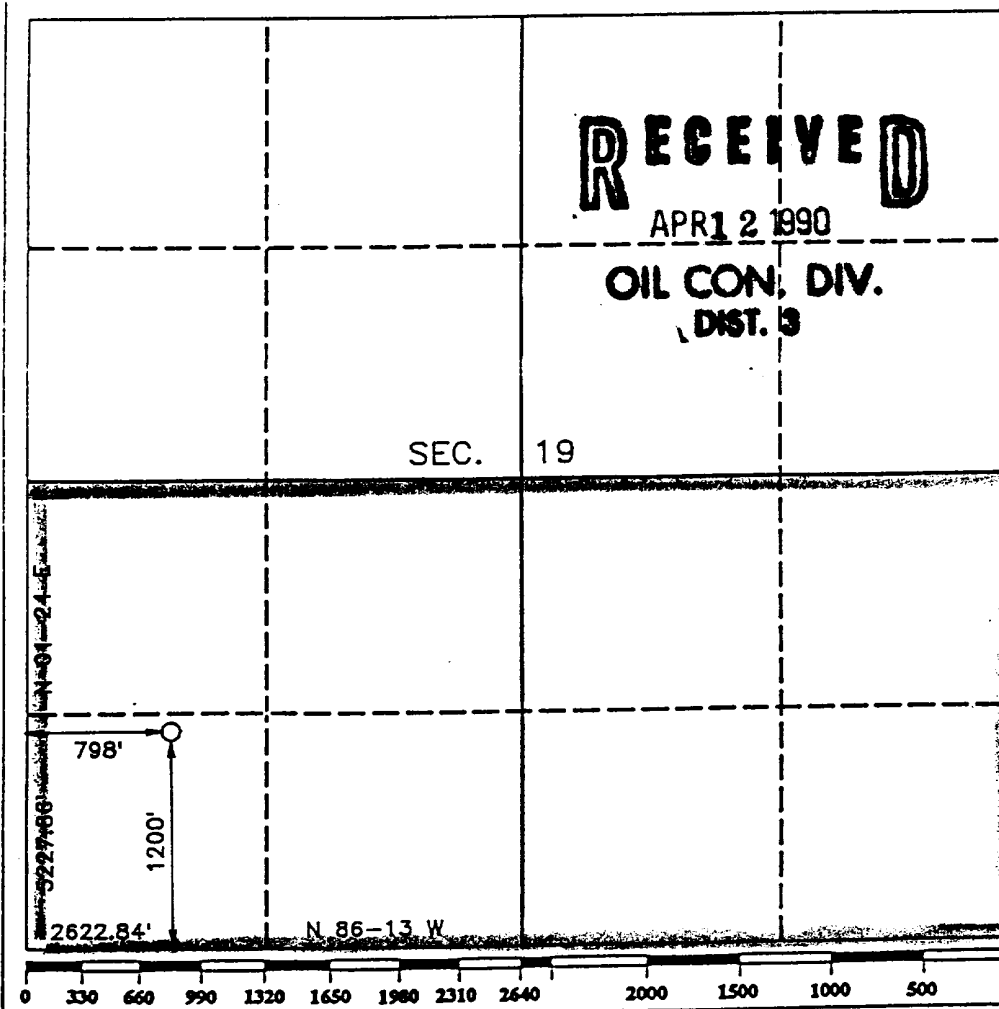
WELL LOCATION AND ACREAGE DEDICATION PLAT

All Distances must be from the outer boundaries of the section

RECEIVED  
LAND SURVEYOR  
SANTA FE, NEW MEXICO

Operator <b>UNION OIL CO. OF CALIFORNIA</b>			Lease <b>RINCON UNIT</b>		Well No. <b>264</b>
Unit Letter <b>M</b>	Section <b>19</b>	Township <b>T.27 N.</b>	Range <b>R.6 W.</b>	County <b>RIO ARriba COUNTY</b>	
Actual Footage Location of Well: <b>1200</b> feet from the <b>SOUTH</b> line and <b>798</b> feet from the <b>WEST</b> line					
Ground level Elev. <b>6582</b>	Producing Formation <b>FRUITLAND COAL</b>		Pool <b>BASIN FRUITLAND COAL</b>		Dedicated Acreage: <b>320 3/4</b> Acres

- Outline the acreage dedicated to the subject well by colored pencil or hatchure marks on the plat below.
- If more than one lease is dedicated to the well, outline each and identify the ownership thereof (both as to working interest and royalty).
- If more than one lease of different ownership is dedicated to the well, have the interest of all owners been consolidated by communization, unitization, force-pooling, etc.?  
☒ Yes ☐ No If answer is "yes" type of consolidation UNITIZATION  
If answer is "no" list the owners and tract descriptions which have actually been consolidated. (Use reverse side of this form if necessary).  
No allowable will be assigned to the well until all interests have been consolidated (by communization, unitization, forced-pooling, or otherwise) or until a non-standard unit, eliminating such interest, has been approved by the Division.



OPERATOR CERTIFICATION

I hereby certify that the information contained herein is true and complete to the best of my knowledge and belief.

Signature  
*Chris Russell*  
Printed Name  
**Chris Russell**  
Position  
**AGENT**  
Company  
**Unocal**  
Date  
**3/28/90**

SURVEYOR CERTIFICATION

I hereby certify that the well location shown on this plat was plotted from field notes of actual surveys made by me or under my supervision, and that the same is true and correct to the best of my knowledge and belief.

Date Surveyed  
**MARCH 28 1990**  
Signature  
*R. Howard Daggett*  
Professional Land Surveyor  
**R. HOWARD DAGGETT**  
Certificate No.  
**9675**  
Registered Professional  
Land Surveyor

EX-100

EX-100

EX-100

EX-100

RINCON UNIT WELL NO. 264  
DRILLING PROGRAM - PAGE 2.

Testing Procedure:

The BOP and related equipment will be tested to 2000 psi in accordance with the provisions of Onshore Oil and Gas Order No. 2.

BOP's will be operationally tested daily, and each test will be logged in the IADC Daily Drilling Report.

Blooie line:

The blooie line and related equipment will meet all requirements of Onshore Oil and Gas Order No. 2.

4. CASING AND CEMENTING PROGRAM

<u>SURFACE CASING</u>						
<u>AGE</u>	<u>Depth</u>	<u>Hole Size</u>	<u>Size</u>	<u>Weight</u>	<u>Grade</u>	<u>Thread</u>
New	0-225'	12-1/4"	8-5/8"	24.0#	K-55	ST&C

<u>INTERMEDIATE CASING</u>						
<u>Age</u>	<u>Depth</u>	<u>Hole Size</u>	<u>Size</u>	<u>Weight</u>	<u>Grade</u>	<u>Thread</u>
New	0-TD	7-7/8"	4-1/2"	10.5#	K-55	ST&C

MINIMUM SAFETY FACTORS

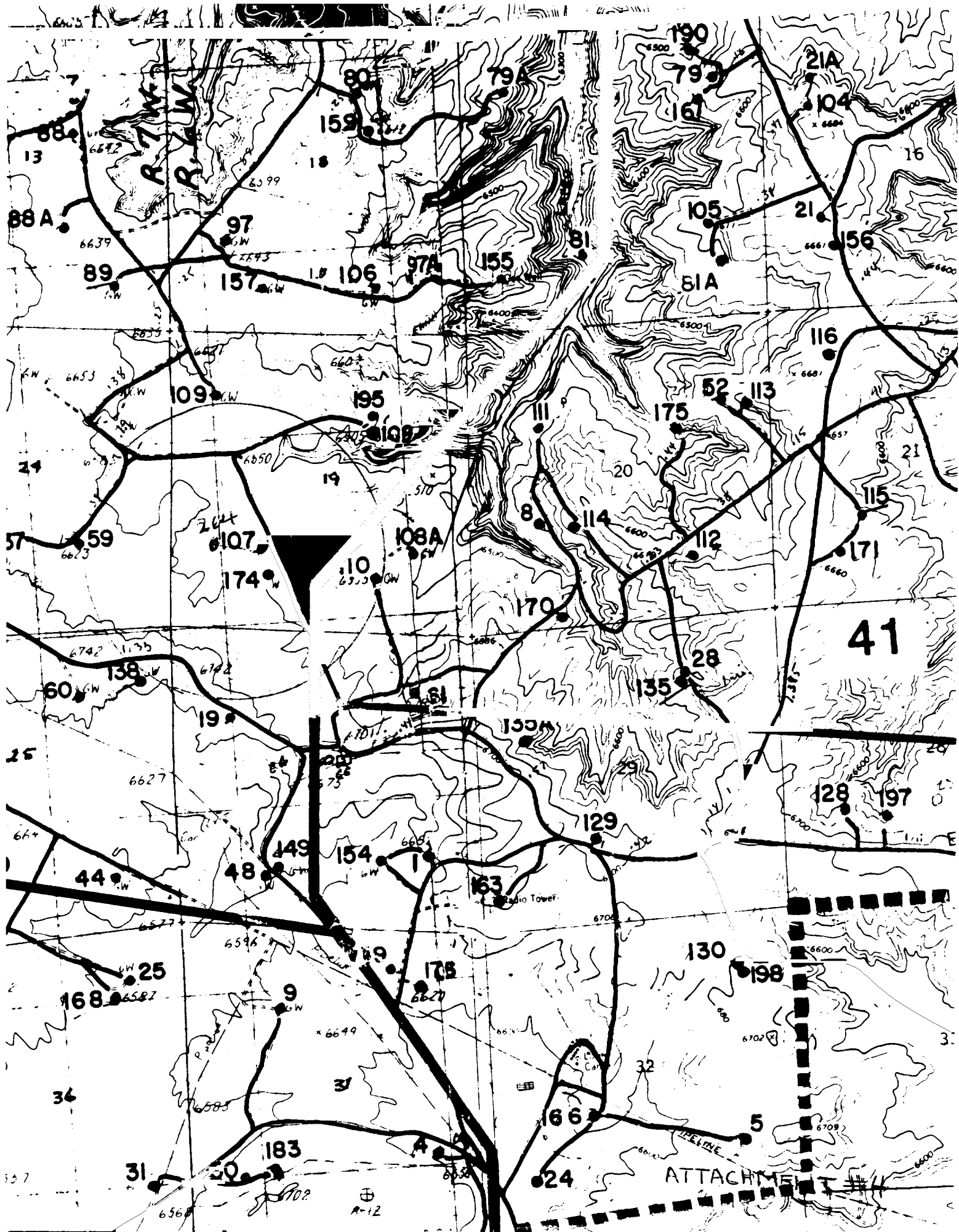
Collapse: 1.0

Tension: 1.8

Burst: 1.0

Cementing Program:

1. The 8-5/8" surface casing will be cemented to the surface with 175 sacks of class "B" cement with 2% CaCl<sub>2</sub> and 1/4# per sack flocele.
2. The 4-1/2" production casing will be cemented in 2 stages with the DV tool set at 2500'. 1st stage will be cemented with 85 sacks class "H" cement with .95% Flo-Lock-1, 18% Thrifty Lite, 3% KCL, 3# Hi-seal.  
2nd stage will be cemented with 325 sacks pacesetter lite with 6% gel, 1/3# cello-seal. .8% CF-1, 3# Hi-seal followed with 50 sacks class "C" cement. Actual cement volumes will be calculated from open hole logs and will be designed to circulate to surface.



159.40  
160.00  
319.40