

UNITED STATES
DEPARTMENT OF THE INTERIOR
BUREAU OF LAND MANAGEMENT

RECEIVED
30-239-24704

APPLICATION FOR PERMIT TO DRILL, DEEPEN, OR PLUG BACK		
1a. TYPE OF WORK DRILL	5. LEASE NUMBER SF-080385	
1b. TYPE OF WELL GAS	6. IF INDIAN, ALL. OR TRIBE NAME	
2. OPERATOR <i>23708</i> UNION OIL CO. OF CAL.	7. UNIT AGREEMENT NAME RINCON UNIT	
3. ADDRESS OF OPERATOR P O BOX 2074 FARMINGTON, NM, 87401 (505)-325-8786	8. FARM OR LEASE NAME RINCON <i>unit 11510</i>	
4. LOCATION OF WELL 2265' FSL, 1555' <i>FULL</i> FEL	9. WELL NO. # 292	
	10. FIELD, POOL, OR WILDCAT BASIN FRUITLAND COAL <i>71624</i>	
14. DISTANCE FROM NEAREST TOWN 40 Miles SE of Bloomfield	12. COUNTY Rio Arriba	13. STATE New Mex.
15. DISTANCE FROM PROPOSED LOCATION TO NEAREST PROPERTY OR LEASE LINE 1555 Feet	16. ACRES IN LEASE <i>2560</i>	17. ACRES ASSIGNED TO WELL 320 Acres
18. DISTANCE FROM PROPOSED LOCATION TO NEAREST WELL DRILLING, COMPLETED OR APPLIED FOR ON THIS LEASE: 800 Feet	19. PROPOSED DEPTH 3275 Feet	20. ROTARY OR CABLE TOOLS Rotary
21. ELEVATIONS (DF, FT, GR, ETC.) 6602 GL	22. APPROX. DATE WORK WILL BEGIN Spring 1990	
23. PROPOSED CASING AND CEMENTING PROGRAM SEE ATTACHED DRILLING PLAN		
24. AUTHORIZED BY: <i>Chris Russell</i> AGENT		
DATE: <i>3/16/90</i>		
PERMIT <i>0111111111</i>		
APPROVAL DATE _____		
APPROVED BY: <i>APR 12 1990</i> TITLE _____ DATE _____		
NOTE: THIS FORMAT IS ISSUED IN LIEU OF BLM FORM 3160-3		

APPROVED
AS AMENDED
APR 10 1990
AREA MANAGER

OK

to Appropriate
Office
Lease - 4 copies
Fee Lease - 3 copies

State of New Mexico
Energy, Minerals and Natural Resources Department

OIL CONSERVATION DIVISION

P.O. Box 2088

Santa Fe, New Mexico 87504-2088

DISTRICT I
P.O. Box 1980, Hobbs, NM 88240

DISTRICT II
P.O. Drawer DD, Artesia, NM 88210

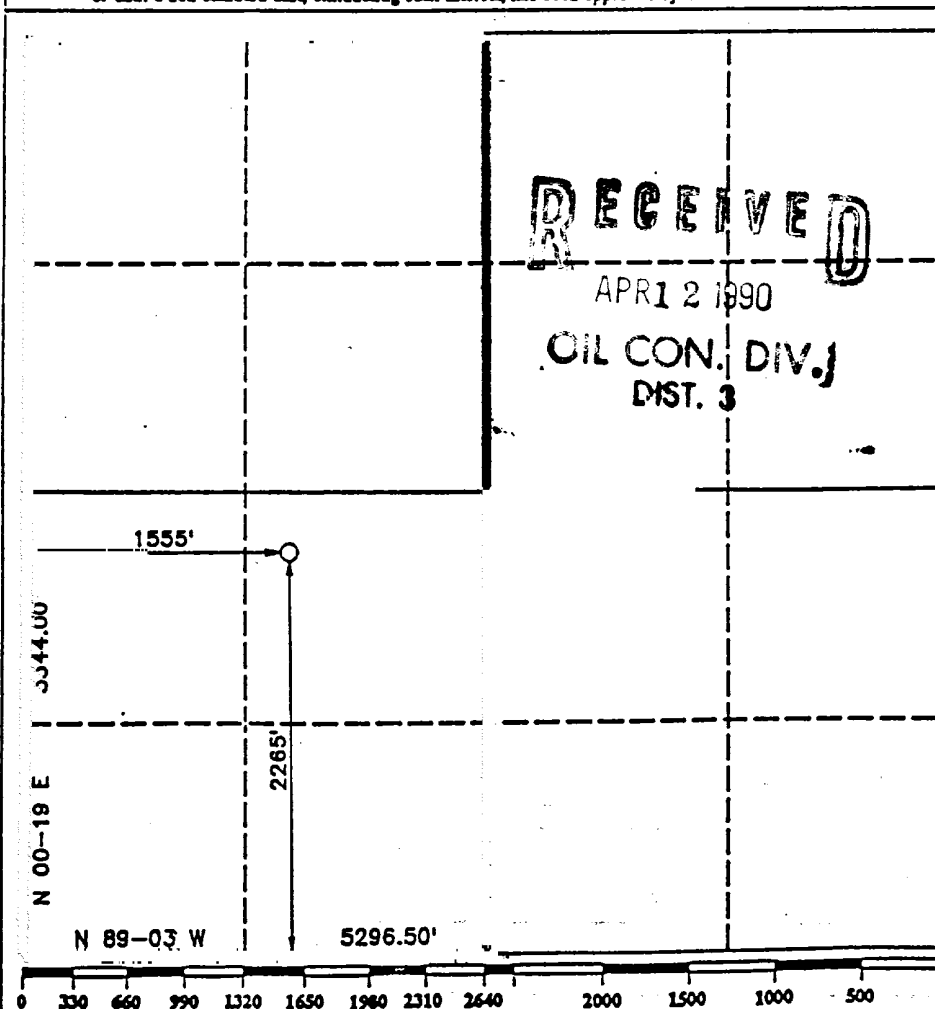
DISTRICT III
1000 Rio Brazos Rd., Aztec, NM 87410

WELL LOCATION AND ACREAGE DEDICATION PLAT

All Distances must be from the outer boundaries of the section

Operator UNION OIL CO. OF CALIFORNIA			Lease RINCON UNIT		Well No. 292
Unit Letter K	Section 35	Township T.27 N.	Range R.7 W.	County RIO ARriba COUNTY	
Actual Footage Location of Well: 2265 feet from the SOUTH line and 1555 feet from the WEST line					
Ground level Elev. 6602	Producing Formation Fruitland Coal		Pool Basin Fruitland Coal	Dedicated Acreage: 320 33 8/100 Acres	

- Outline the acreage dedicated to the subject well by colored pencil or hatchure marks on the plat below.
- If more than one lease is dedicated to the well, outline each and identify the ownership thereof (both as to working interest and royalty).
- If more than one lease of different ownership is dedicated to the well, have the interest of all owners been consolidated by communization, unitization, force-pooling, etc?
☒ Yes ☐ No If answer is "yes" type of consolidation Unitization
If answer is "no" list the owners and tract descriptions which have actually been consolidated. (Use reverse side of this form if necessary.)
No allowable will be assigned to the well until all interests have been consolidated (by communization, unitization, forced-pooling, or otherwise) or until a non-standard unit, eliminating such interest, has been approved by the Division.



OPERATOR CERTIFICATION

I hereby certify that the information contained herein is true and complete to the best of my knowledge and belief.

Signature Chris Russell
Printed Name Chris Russell
Position AGENT
Company UNOCA
Date 3/14/90

SURVEYOR CERTIFICATION

I hereby certify that the well location shown on this plat was plotted from field notes of actual surveys made by me or under my supervision, and that the same is true and correct to the best of my knowledge and belief.

Date Surveyed MARCH 6 1990
Signature of Seal R. Howard Dagset
Professional Surveyor 9678
Certificate No. 9678
Registered Professional Land Surveyor

Testing Procedure:

The BOP and related equipment will be tested to 2000 psi in accordance with the provisions of Onshore Oil and Gas Order No. 2.

BOP's will be operationally tested daily, and each test will be logged in the IADC Daily Drilling Report.

Blooie line:

The blooie line and related equipment will meet all requirements of Onshore Oil and Gas Order No. 2.

4. CASING AND CEMENTING PROGRAM

<u>SURFACE CASING</u>						
<u>AGE</u>	<u>Depth</u>	<u>Hole Size</u>	<u>Size</u>	<u>Weight</u>	<u>Grade</u>	<u>Thread</u>
New	0-225'	12-1/4"	8-5/8"	24.0#	K-55	ST&C

<u>INTERMEDIATE CASING</u>						
<u>Age</u>	<u>Depth</u>	<u>Hole Size</u>	<u>Size</u>	<u>Weight</u>	<u>Grade</u>	<u>Thread</u>
New	0-TD	7-7/8"	4-1/2"	10.5#	K-55	ST&C

MINIMUM SAFETY FACTORS

Collapse: 1.0
 Tension: 1.8
 Burst: 1.0

Cementing Program:

1. The 8-5/8" surface casing will be cemented to the surface with 175 sacks of class "B" cement with 2% CaCl₂ and 1/4# per sack flocele.
2. The 4-1/2" production casing will be cemented in 2 stages with the DV tool set at 2900'. 1st stage will be cemented with 85 sacks class "H" cement with .95% Flo-Lock-1, 18% Thrifty Lite, 3% KCL, 3# Hi-seal.
 2nd stage will be cemented with 325 sacks pacesetter lite with 6% gel, 1/3# cello-seal. .8% CF-1, 3# Hi-seal followed with 50 sacks class "C" cement. Actual cement volumes will be calculated from open hole logs and will be designed to circulate to surface.