

RECEIVED

APR 24 1990

OIL CON. DIV.

Form 3

UNITED STATES
DEPARTMENT OF THE INTERIOR
BUREAU OF LAND MANAGEMENT

30-037-24713

APPLICATION FOR PERMIT TO DRILL, DEEPEN, OR PLUG BACK

1a. TYPE OF WORK DRILL		5. LEASE NUMBER SF-079360	
1b. TYPE OF WELL GAS		6. IF INDIAN, ALL. OR TRIBE NAME	
2. OPERATOR UNION OIL CO. OF CAL.		7. UNIT AGREEMENT NAME RINCON UNIT	
3. ADDRESS OF OPERATOR P O BOX 2074 FARMINGTON, NM, 87401 (505)-325-8786		8. FARM OR LEASE NAME RINCON <i>Unit</i>	
4. LOCATION OF WELL 922' FNL, 1148' FEL		9. WELL NO. 282	
10. FIELD, POOL, OR WILDCAT BASIN FRUITLAND COAL		11. SEC. 22, T. 27N, R. 7W <i>A</i>	
14. DISTANCE FROM NEAREST TOWN 40 Miles SE of Bloomfield		12. COUNTY Rio Arriba	13. STATE New Mex.
15. DISTANCE FROM PROPOSED LOCATION TO NEAREST PROPERTY OR LEASE LINE 922'		16. ACRES IN LEASE <i>800</i>	17. ACRES ASSIGNED TO WELL <i>E/320</i>
18. DISTANCE FROM PROPOSED LOCATION TO NEAREST WELL DRILLING, COMPLETED OR APPLIED FOR ON THIS LEASE: 278'		19. PROPOSED DEPTH 3151'	20. ROTARY OR CABLE TOOLS <i>This section is subject to technical and procedural review pursuant to 43 CFR 3165 and appeal pursuant to 43 CFR 3165.4.</i> Rotary
21. ELEVATIONS (DF, FT, GR, ETC.) 6521' GL		22. APPROX. DATE WORK WILL BEGIN Spring 1990	
23. PROPOSED CASING AND CEMENTING PROGRAM SEE ATTACHED DRILLING PLAN			
24. AUTHORIZED BY: <i>John Russell</i>		3/23/90 DATE	
AGENT			

PERMIT NO. _____ APPROVAL DATE _____

APPROVED BY _____ TITLE _____ DATE _____

NOTE: THIS FORMAT IS ISSUED IN LIEU OF BLM FORM 3160-3

**APPROVED
AS AMENDED**

NMOCD

APR 20 1990
John Russell
AREA MANAGER



3 V 13 3 3

1913

1913

1913

Submit to Appropriate
District Office
State Lease - 4 copies
Fee Lease - 3 copies

State of New Mexico
Energy, Minerals and Natural Resources Department

Form C-102
Revised 1-1-89

OIL CONSERVATION DIVISION

P.O. Box 2088
Santa Fe, New Mexico 87504-2088

DISTRICT I
P.O. Box 1980, Hobbs, NM 88240

DISTRICT II
P.O. Drawer DD, Artesia, NM 88210

DISTRICT III
1000 Rio Brazos Rd., Aztec, NM 87410

WELL LOCATION AND ACREAGE DEDICATION PLAT

All Distances must be from the outer boundaries of the section

Operator UNION OIL CO. OF CALIFORNIA			Lease RINCON UNIT		Well No. 282
Unit Letter A	Section 22	Township 1.27 N.	Range R.7 W.	County RIO ARriba COUNTY	
Actual Footage Location of Well: 922 feet from the NORTH line and 1148 feet from the EAST line					
Ground level Elev. 6521		Producing Formation FRUITLAND COAL		Pool BASIN FRUITLAND COAL	
				Dedicated Acreage: 320	Acres

- Outline the acreage dedicated to the subject well by colored pencil or hatchure marks on the plat below.
- If more than one lease is dedicated to the well, outline each and identify the ownership thereof (both as to working interest and royalty).
- If more than one lease of different ownership is dedicated to the well, have the interest of all owners been consolidated by communitization, unitization, force-pooling, etc.?
☒ Yes ☐ No If answer is "yes" type of consolidation Unitization
If answer is "no" list the owners and tract descriptions which have actually been consolidated. (Use reverse side of this form if necessary.)
No allowable will be assigned to the well until all interests have been consolidated (by communitization, unitization, forced-pooling, or otherwise) or until a non-standard unit, eliminating such interest, has been approved by the Division.

OPERATOR CERTIFICATION

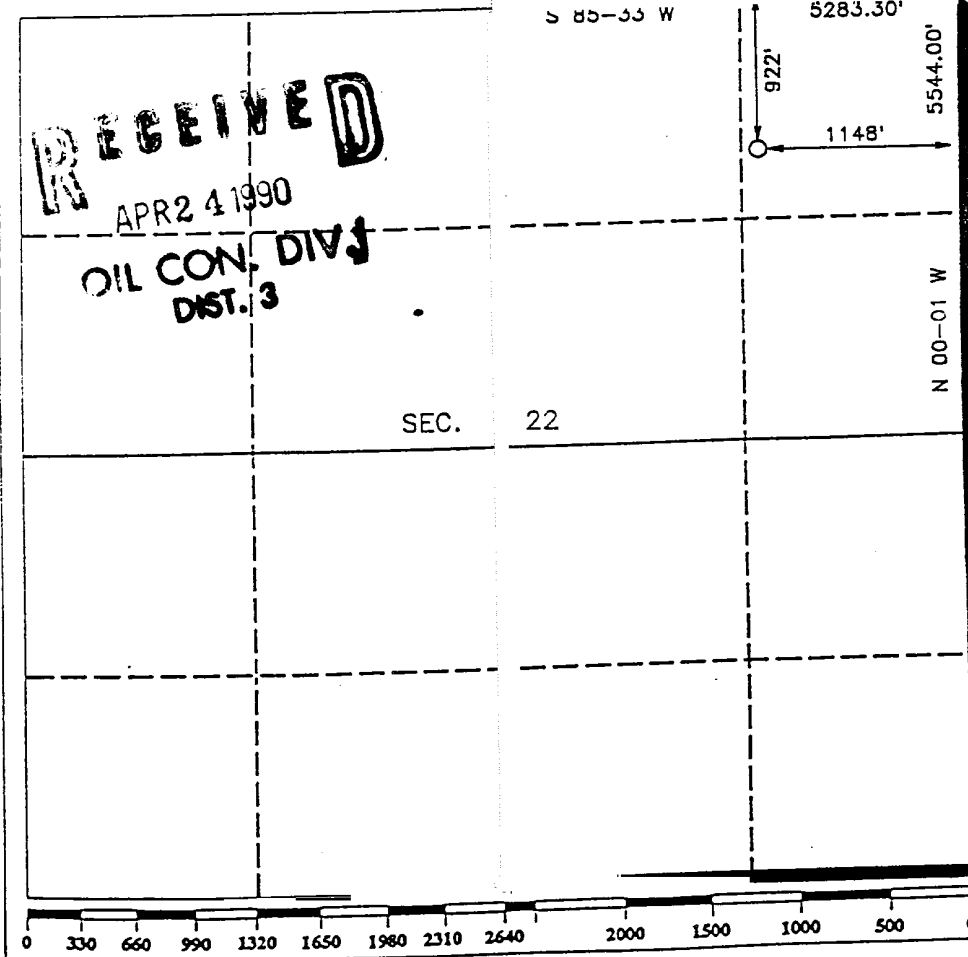
I hereby certify that the information contained herein is true and complete to the best of my knowledge and belief.

Signature Chris Russell
Printed Name Chris Russell
Position AGENT
Company Unocal
Date 3/23/90

SURVEYOR CERTIFICATION

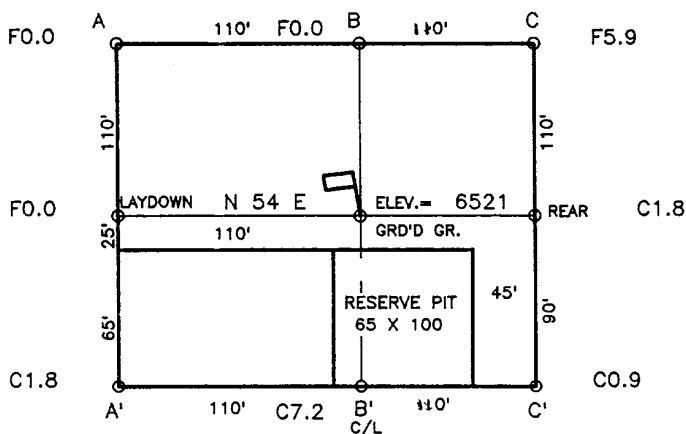
I hereby certify that the well location shown on this plat was plotted from field notes of actual surveys made by me or under my supervision, and that the same is true and correct to the best of my knowledge and belief.

Date Surveyed MARCH 20, 1990
Signature of Seal of W MEXICO Professional Surveyor
R. HOWARD DAGGETT
Certificate No. 9679
Registered Professional Land Surveyor



COMPANY: UNION OIL CO. OF CALIFORNIA
 LEASE: RINCON UNIT NO.282
 FOOTAGE: 922 FNL, 1148 FEL
 SEC.: 22 TWN: T.27 N. RNG: R.7 W. NMPM
 ELEVATION: 6521

NOT TO SCALE



A-A'

ELEV.				
6550				
6540				
6530				
6520				
6510				
6500				

B-B'

C/L

ELEV.				
6550				
6540				
6530				
6520				
6510				
6500				

C-C'

C/L

ELEV.				
6550				
6540				
6530				
6520				
6510				
6500				

UNION OIL COMPANY OF CALIFORNIA
RINCON UNIT WELL NO. 282
SEC.22,T.27N.,R.7W.

8 POINT DRILLING PLAN

1. ESTIMATED FORMATION TOPS

<u>FORMATION NAME</u>	<u>DEPTH FROM GL</u>
Ojo Alamo	2016'
Kirtland Shale	2421'
Fruitland	2856'
Pictured Cliffs	3041'
Total Depth	3151'

2. OIL, GAS, WATER, OR OTHER MINERAL BEARING ZONES

<u>EXPECTED GAS ZONES</u>	<u>DEPTH FROM GL</u>
Fruitland coal	2856'-3041'
Pictured Cliffs	3041'-TD
<u>EXPECTED WATER ZONES</u>	<u>DEPTH FROM GL</u>
Ojo Alamo	2016'

Possible water zones will be protected by 8-5/8" surface casing and/or 4-1/2" production strings, both of which will be cemented to surface.

3. PRESSURE CONTROL BOP'S AND RELATED EQUIPMENT

Casing Head: 8-5/8" X 11" - 2000 psi W.P.

BOP Stack and Related Equipment:(See attachment #1)

One double-gate BOP with 4-1/2" pipe and blind rams.

One choke manifold with adjustable and positive chokes.

The BOP and choke manifold will be rated at 2000 psi,

Testing Procedure:

The BOP and related equipment will be tested to 2000 psi in accordance with the provisions of Onshore Oil and Gas Order No. 2.

BOP's will be operationally tested daily, and each test will be logged in the IADC Daily Drilling Report.

Blooie line:

The blooie line and related equipment will meet all requirements of Onshore Oil and Gas Order No. 2.

4. CASING AND CEMENTING PROGRAM

<u>SURFACE CASING</u>						
<u>AGE</u>	<u>Depth</u>	<u>Hole Size</u>	<u>Size</u>	<u>Weight</u>	<u>Grade</u>	<u>Thread</u>
New	0-225'	12-1/4"	8-5/8"	24.0#	K-55	ST&C

<u>INTERMEDIATE CASING</u>						
<u>Age</u>	<u>Depth</u>	<u>Hole Size</u>	<u>Size</u>	<u>Weight</u>	<u>Grade</u>	<u>Thread</u>
New	0-TD	7-7/8"	4-1/2"	10.5#	K-55	ST&C

MINIMUM SAFETY FACTORS

Collapse: 1.0

Tension: 1.8

Burst: 1.0

Cementing Program:

1. The 8-5/8" surface casing will be cemented to the surface with 175 sacks of class "B" cement with 2% CaCl₂ and 1/4# per sack flocele.
2. The 4-1/2" production casing will be cemented in 2 stages with the DV tool set at 2900'. 1st stage will be cemented with 85 sacks class "H" cement with .95% Flo-Lock-1, 18% Thrifty Lite, 3% KCL, 3# Hi-seal. 2nd stage will be cemented with 325 sacks pacesetter lite with 6% gel, 1/3# cello-seal. .8% CF-1, 3# Hi-seal followed with 50 sacks class "C" cement. Actual cement volumes will be calculated from open hole logs and will be designed to circulate to surface.

