

Submit to Appropriate
District Office
State Lease -- 6 copies
Fee Lease -- 5 copies

State of New Mexico
Energy, Minerals and Natural Resources Department

Form C-101
Revised 1-1-89

OIL CONSERVATION DIVISION

P.O. Box 2088
Santa Fe, New Mexico 87504-2088

DISTRICT I
P.O. Box 1980, Hobbs, NM 88240

DISTRICT II
P.O. Drawer DD, Artesia, NM 88210

DISTRICT III
1000 Rio Brazos Rd., Aztec, NM 87410

API NO. (assigned by OCD on New Wells)

30-039-24740

5. Indicate Type of Lease

STATE ☒

FEE ☐

6. State Oil & Gas Lease No.

APPLICATION FOR PERMIT TO DRILL, DEEPEN, OR PLUG BACK

1a. Type of Work:

DRILL ☒

RE-ENTER ☐

DEEPEN ☐

PLUG BACK ☐

b. Type of Well:

OIL
WELL ☐

GAS
WELL ☒

OTHER ☐

SINGLE
ZONE ☐

MULTIPLE
ZONE ☐

7. Lease Name or Unit Agreement Name

Johnston A

8. Well No.

17

9. Pool name or Wildcat

Basin Fruitland Coal

2. Name of Operator

Union Oil Company of California

3. Address of Operator

P.O. Box 2074, Farmington, N.M. 87401

4. Well Location

Unit Letter N : 1025 Feet From The South Line and 1543 Feet From The West Line

Section 36

Township 27N

Range 6W

NMPM

Rio Arriba

County

10. Proposed Depth

3373'

11. Formation

Fruitland Coal

12. Rotary or C.T.

Rotary

13. Elevations (Show whether DF, RT, GR, etc.)

6743' GR

14. Kind & Status Plug. Bond

Current N.W.

15. Drilling Contractor

Arapahoe

16. Approx. Date Work will start

Spring, 1990

17.

PROPOSED CASING AND CEMENT PROGRAM

SIZE OF HOLE	SIZE OF CASING	WEIGHT PER FOOT	SETTING DEPTH	SACKS OF CEMENT	EST. TOP
12 1/4"	8 5/8"	24.0 #	225'	175 sacks	surface
7 7/8"	4 1/2"	10.5 #	T.D. <u>3373'</u>	410 sacks	surface

MIRU. Drill 12-1/4" hole with spud mud to 225'. Survey. Rig up and run casing and cement. WOC @ 18 hours. NUBOP, choke, and kill line (2000#) and test same plus casing. Drill out with 7-7/8" hole from 225' to T.D. with fresh water mud. Run surveys @ 500' intervals or first bit trip succeeding 500'. At T.D. log with DISFL, GR, SP, FDC, CNL-GR. Run and cement casing. RDMOL.

APPROVAL EXPIRES 11-3-90
UNLESS DRILLING IS COMMENCED.
SPUD NOTICE MUST BE SUBMITTED
WITHIN 10 DAYS.

RECEIVED
MAY 02 1990
OIL CON. DIV.
DIST. 3

IN ABOVE SPACE DESCRIBE PROPOSED PROGRAM: IF PROPOSAL IS TO DEEPEN OR PLUG BACK, GIVE DATA ON PRESENT PRODUCTION ZONE AND PROPOSED NEW PRODUCTIVE ZONE. GIVE BLOWOUT PREVENTER PROGRAM, IF ANY.

I hereby certify that the information above is true and complete to the best of my knowledge and belief.

SIGNATURE

Chris Russell

TITLE Agent

DATE 4/26/90

TYPE OR PRINT NAME

CHRIS RUSSELL

TELEPHONE NO. 325-067

(This space for State Use)

APPROVED BY

Barbara Bush

TITLE DEPUTY OIL & GAS INSPECTOR, DIST. 3

DATE

MAY 03 1990

CONDITIONS OF APPROVAL, IF ANY:

Submit to Appropriate
District Office
State Lease - 4 copies
Fee Lease - 3 copies

State of New Mexico
Energy, Minerals and Natural Resources Department

Form C-102
Revised 1-1-89

OIL CONSERVATION DIVISION

P.O. Box 2088
Santa Fe, New Mexico 87504-2088

DISTRICT I
P.O. Box 1980, Hobbs, NM 88240

DISTRICT II
P.O. Drawer DD, Artesia, NM 88210

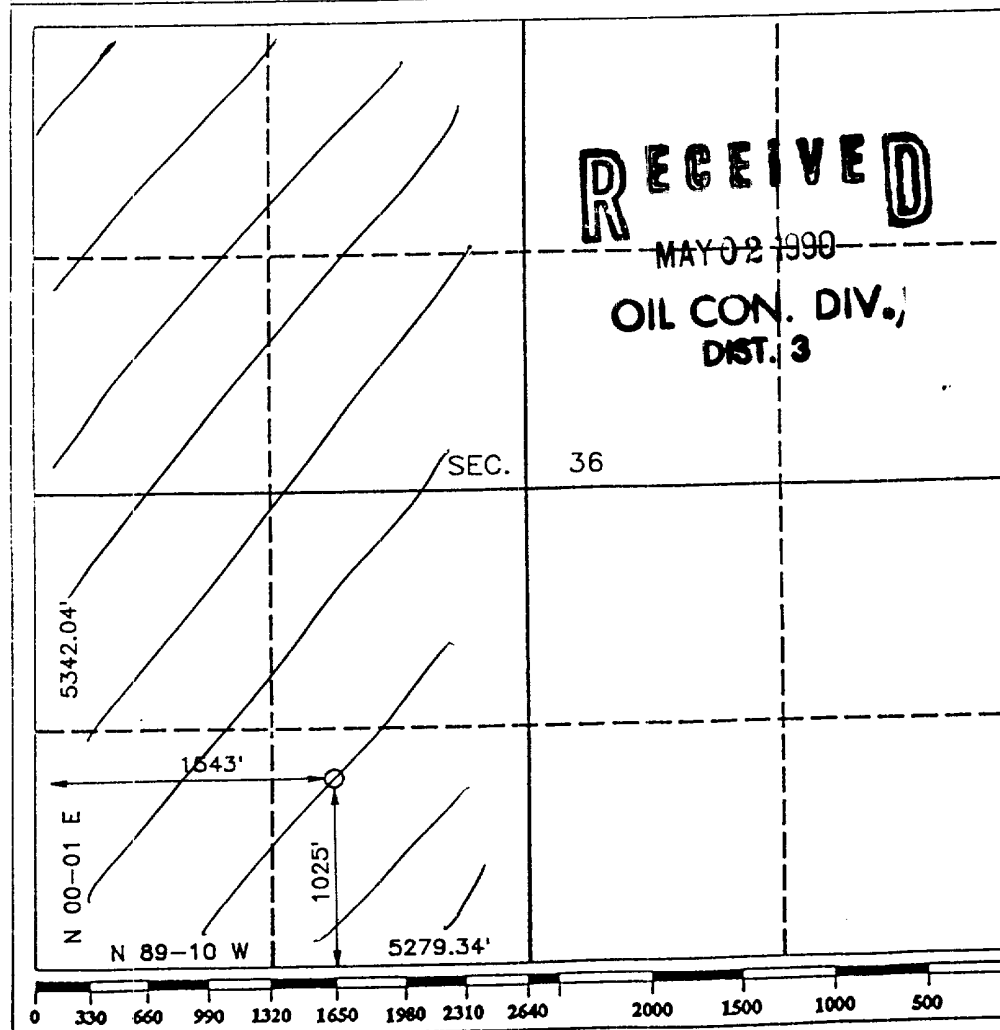
DISTRICT III
1000 Rio Brazos Rd., Aztec, NM 87410

WELL LOCATION AND ACREAGE DEDICATION PLAT

All Distances must be from the outer boundaries of the section

Operator UNION OIL CO. OF CALIFORNIA			Lease JOHNSTON A		Well No. 17
Unit Letter N	Section 36	Township T.27 N.	Range R.6 W.	County RIO ARriba COUNTY	
Actual Footage Location of Well: 1025 feet from the SOUTH line and 1543 feet from the WEST line					
Ground level Elev. 6743	Producing Formation FRUITLAND COAL		Pool BASIN FRUITLAND COAL		Dedicated Acreage: 320 Acres

1. Outline the acreage dedicated to the subject well by colored pencil or hachure marks on the plat below.
2. If more than one lease is dedicated to the well, outline each and identify the ownership thereof (both as to working interest and royalty).
3. If more than one lease of different ownership is dedicated to the well, have the interest of all owners been consolidated by communitization, unitization, force-pooling, etc.?
☐ Yes ☐ No If answer is "yes" type of consolidation _____
If answer is "no" list the owners and tract descriptions which have actually been consolidated. (Use reverse side of this form if necessary).
No allowable will be assigned to the well until all interests have been consolidated (by communitization, unitization, forced-pooling, or otherwise) or until a non-standard unit, eliminating such interest, has been approved by the Division.



OPERATOR CERTIFICATION

I hereby certify that the information contained herein is true and complete to the best of my knowledge and belief.

Signature
Chris Russell
Printed Name
CHRIS RUSSELL
Position
AGENT
Company
UNOCAL
Date
5-1-90

SURVEYOR CERTIFICATION

I hereby certify that the well location shown on this plat was plotted from field notes of actual surveys made by me or under my supervision, and that the same is true and correct to the best of my knowledge and belief.

Date Surveyed
APR 14, 1990
Signature & Seal of MEXICO
Professional Surveyor
R. HOWARD DAGGETT
Certificate No.
8679
Registered Professional
Land Surveyor