

UNITED STATES  
DEPARTMENT OF THE INTERIOR  
BUREAU OF LAND MANAGEMENT

APPLICATION FOR PERMIT TO DRILL, DEEPEN, OR PLUG BACK

1a. TYPE OF WORK

DRILL ☒

DEEPEN ☐

PLUG BACK ☐

b. TYPE OF WELL

OIL  
WELL ☐

GAS  
WELL ☒

OTHER

SINGLE  
ZONE ☒

MULTIPLE  
ZONE ☐

2. NAME OF OPERATOR

MESA OPERATING LIMITED PARTNERSHIP

3. ADDRESS OF OPERATOR

P.O. BOX 2009, AMARILLO, TEXAS 79189

4. LOCATION OF WELL (Report location clearly and in accordance with any State requirements.\*)

At surface 1250' FSL & 900' FWL

At proposed prod. zone  
Same

14. DISTANCE IN MILES AND DIRECTION FROM NEAREST TOWN OR POST OFFICE\*

5 miles south east of Blanco, New Mexico

15. DISTANCE FROM PROPOSED\*

LOCATION TO NEAREST  
PROPERTY OR LEASE LINE, FT.  
(Also to nearest drlg. unit line, if any)

900

16. NO. OF ACRES IN LEASE

2560

17. NO. OF ACRES ASSIGNED  
TO THIS WELL

S/2 320

18. DISTANCE FROM PROPOSED LOCATION\*  
TO NEAREST WELL, DRILLING, COMPLETED,  
OR APPLIED FOR, ON THIS LEASE, FT.

1800'

19. PROPOSED DEPTH

2370'

20. ROTARY OR CABLE TOOLS

Rotary

21. ELEVATIONS (Show whether DF, RT, GR, etc.) This action is subject to technical and  
procedural review pursuant to 43 CFR 3165.3  
and appeal pursuant to 43 CFR 3165.4.

6233' GR

22. APPROX. DATE WORK WILL START\*

23. PROPOSED CASING AND CEMENTING PROGRAM

DRILLING OPERATIONS AUTHORIZED ARE  
SUBJECT TO COMPLIANCE WITH ATTACHED  
"GENERAL REQUIREMENTS"

SIZE OF HOLE	SIZE OF CASING	WEIGHT PER FOOT	SETTING DEPTH	QUANTITY OF CEMENT
12 1/4"	8 5/8"	24#	200'	150 (177 Ft <sup>3</sup> ) "B" + 2% CaCl
7 7/8"	5 1/2"	17#		300 (570 Ft <sup>3</sup> ) Poz/200 (236 Ft <sup>3</sup> )

Propose to spud well with 12 1/4" hole and drill to 200' and set  
8 5/8" surface casing. Will cement with 150 sx of Class "B" and  
raise cement to surface. Will nipple up 2000 psi BOP assembly and  
drill 7 7/8" hole to TD of +2370' with fresh water mud system. Will  
then log well and evaluate for possible commercial production. If  
successful, will then run 5 1/2" casing to +2370' and cement with  
300 sx Pozmix followed by 200sx Class "B" cement. Will move off  
drilling rig and move in completion unit.

xc: BLM-Farmington (0+5), NMOCD-Aztec (1), WF, Reg, Land, Expl., Drlg

IN ABOVE SPACE DESCRIBE PROPOSED PROGRAM: If proposal is to deepen or plug back, give data on present productive zone and proposed new productive zone. If proposal is to drill or deepen directionally, give pertinent data on subsurface locations and measured and true vertical depths. Give blowout preventer program, if any.

24.

SIGNED

*Cathy L. McKee*

TITLE Regulatory Analyst

DATE 6/25/90

(This space for Federal or State office use)

PERMIT NO.

APPROVAL DATE

APPROVED BY

JUL 25 1990

TITLE

CONDITIONS OF APPROVAL, IF ANY:

OIL CON. DIV.  
DIST. 3

NMOCD

AREA MANAGER

\*See Instructions On Reverse Side

Submit to Appropriate  
District Office  
State Lease - 4 copies  
Fee Lease - 3 copies

State of New Mexico  
Energy, Minerals and Natural Resources Department

Form C-102  
Revised 1-1-89

OIL CONSERVATION DIVISION

P.O. Box 2088  
Santa Fe, New Mexico 87504-2088

DISTRICT I  
P.O. Box 1980, Hobbs, NM 88240

DISTRICT II  
P.O. Drawer DD, Artesia, NM 88210

DISTRICT III  
1000 Rio Brazos Rd., Aztec, NM 87410

WELL LOCATION AND ACREAGE DEDICATION PLAT

All Distances must be from the outer boundaries of the section

Operator Mesa Operating Limited Partnership			Lease FC Federal		Well No. 22
Unit Letter M	Section 27	Township 26N	Range 7W	County Rio Arriba	
Actual Footage Location of Well: 1250 feet from the South line and 900 feet from the West line					
Ground level Elev. 6233'	Producing Formation Fruitland		Pool Basin Fruitland Coal		Dedicated Acreage: S/2 320 Acres

1. Outline the acreage dedicated to the subject well by colored pencil or hatchure marks on the plat below.

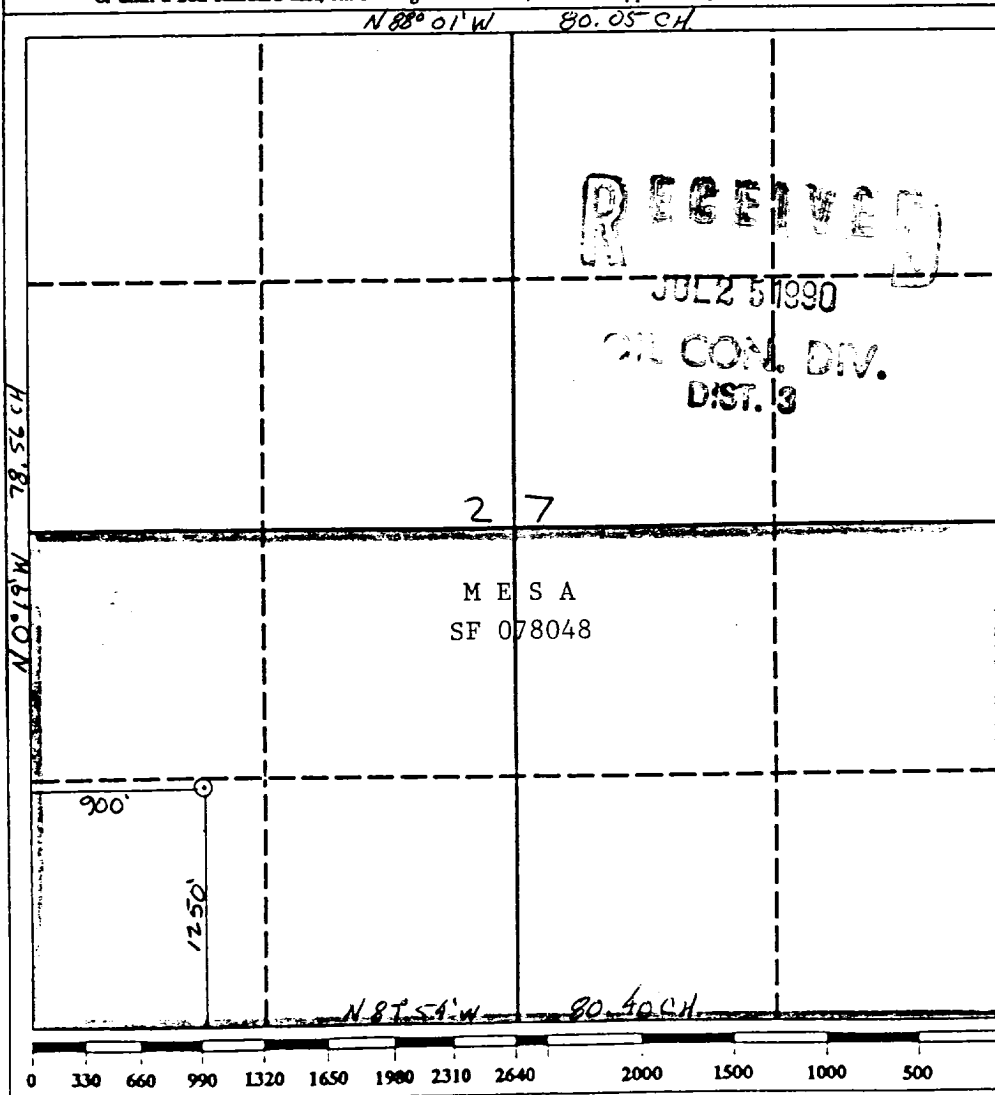
2. If more than one lease is dedicated to the well, outline each and identify the ownership thereof (both as to working interest and royalty).

3. If more than one lease of different ownership is dedicated to the well, have the interest of all owners been consolidated by communitization, unitization, force-pooling, etc.?

☐ Yes ☒ No If answer is "yes" type of consolidation

If answer is "no" list the owners and tract descriptions which have actually been consolidated. (Use reverse side of this form if necessary.)

No allowable will be assigned to the well until all interests have been consolidated (by communitization, unitization, forced-pooling, or otherwise) or until a non-standard unit, eliminating such interest, has been approved by the Division.



OPERATOR CERTIFICATION

I hereby certify that the information contained herein is true and complete to the best of my knowledge and belief.

Signature

Printed Name

Carolyn L. McKee

Position

Regulatory Analyst

Company

Mesa Ltd Partnership

Date

6/22/90

SURVEYOR CERTIFICATION

I hereby certify that the well location shown on this plat was plotted from field notes of actual surveys made by me or under my supervision, and that the same is true and correct to the best of my knowledge and belief.

6-04-90

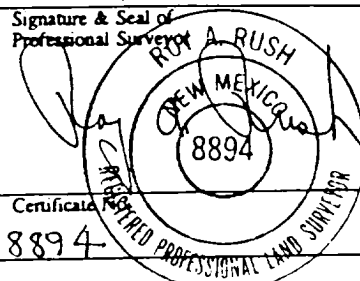
Date Surveyed

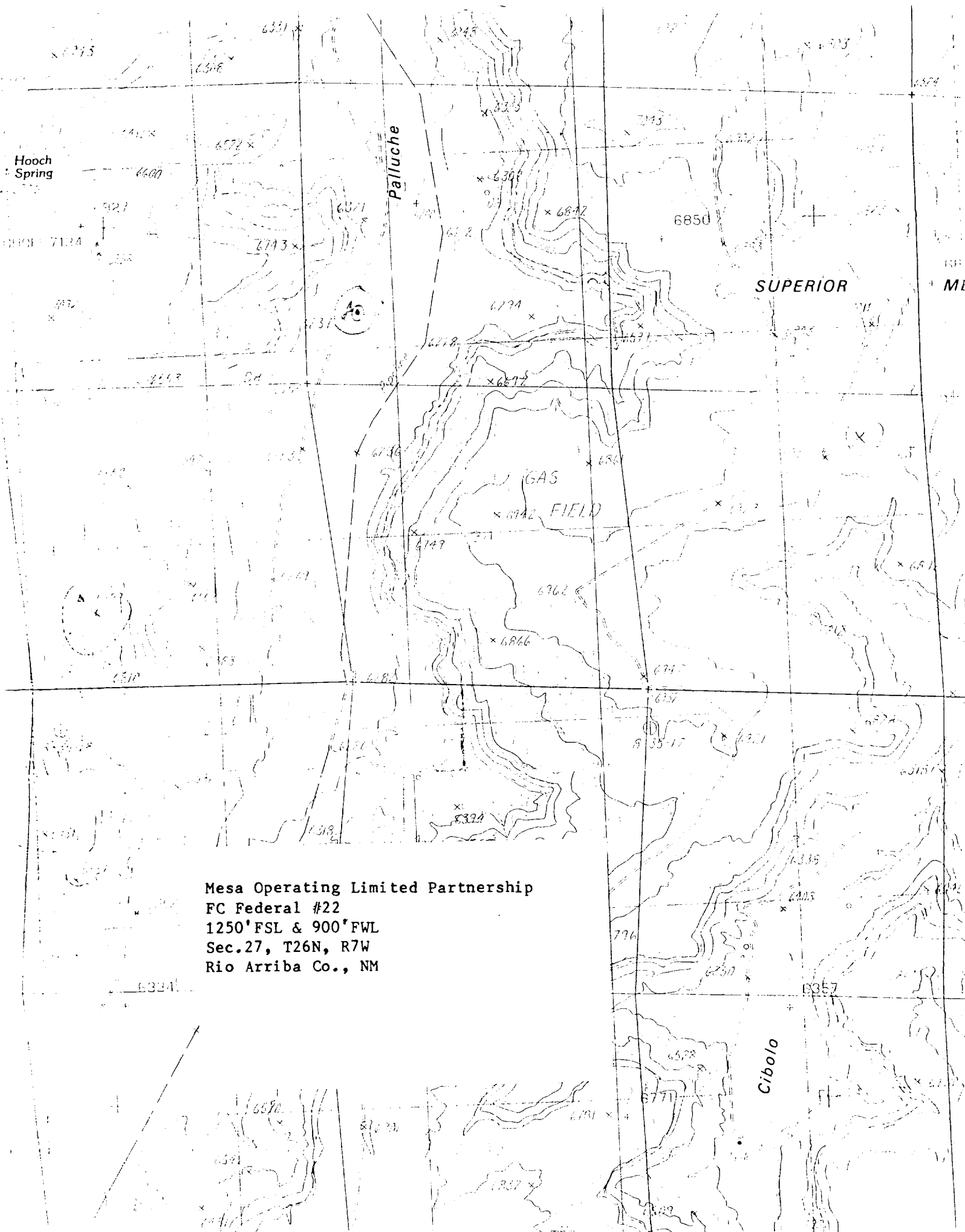
Roy A. Rush

Signature & Seal of  
Professional Surveyor

Certificate

8894





Mesa Operating Limited Partnership  
FC Federal #22  
1250' FSL & 900' FWL  
Sec. 27, T26N, R7W  
Rio Arriba Co., NM