

Submit to Appropriate
District Office
State Lease - 6 copies
Fee Lease - 5 copies

State of New Mexico
Energy, Minerals and Natural Resources Department

Form C-101
Revised 1-1-89

DISTRICT I
P.O. Box 1980, Hobbs, NM 88240

DISTRICT II
P.O. Drawer DD, Artesia, NM 88210

DISTRICT III
1000 Rio Brazos Rd., Aztec, NM 87410

OIL CONSERVATION DIVISION

RECEIVED
MAR 20 1991

MAR 20 1991

OIL CON. DIV.

API NO. (assigned by OCD on New Wells)

30-039-25057

5. Indicate Type of Lease

STATE ☐

FEE ☒

6. State Oil & Gas Lease No.

APPLICATION FOR PERMIT TO DRILL, DEEPEN, OR PLUG BACK

1a. Type of Work:

DRILL ☒

RE-ENTER ☐

DEEPEN ☐

PLUG BACK ☐

b. Type of Well:

OIL

WELL ☐

GAS

WELL ☒

OTHER ☐

SINGLE

ZONE ☐

MULTIPLE

ZONE ☒

7. Lease Name or Unit Agreement Name

Rincon Unit

11510

2. Name of Operator

Union Oil Company of California ✓ 23708

8. Well No.

158M

(5/370/320)

3. Address of Operator

3300 N. Butler, Suite 200, Farmington, NM 87401

9. Pool name or Wildcat

Basin Dakota-Blanco MV

4. Well Location

Unit Letter

J

1535

Feet From The South

Line and

1480

Feet From The East

Line

Section 22

Township T-27N

Range R-6W

NMPM

Rio Arriba ✓

County

10. Proposed Depth

7595

11. Formation

Basin Dakota-Blanco

12. Rotary or C.T.

MV Rotary

13. Elevations (Show whether DF, RT, GR, etc.)

GL 6426 ✓

14. Kind & Status Plug Bond

Statewide

15. Drilling Contractor

Not selected

16. Approx. Date Work will start

April 1, 1991

17.

PROPOSED CASING AND CEMENT PROGRAM

SIZE OF HOLE	SIZE OF CASING	WEIGHT PER FOOT	SETTING DEPTH	SACKS OF CEMENT	EST. TOP
17 1/2	13 3/8	48# H-40	500'	600	Circ. to Surface
12 1/4	9 5/8	40# K-55	(1000') 4500'	Stage 1 - 500	Circ. to DV
DV tool @ 2867	9 5/8	36# K-55	(3500')	Stage 2 - 800	Circ. to Surface
8 3/4	7	26# N-80	(3095') 7595'	Stage 1 - 350	Circ. to DV
DV tool @ 6000	7	23# K-55	(4500')	Stage 2 - 250	Circ. to 9 5/8 Shoe

Proposed to spud in San Jose Formation. Will drill a 17 1/2" hole to a TD of 500'. Run and cement surface casing with returns to surface. WOC 18 hours. Pressure test to 600 psi/30 minutes. Drill a 12 1/4" hole to a TD of 4500' using fresh water mud. Run and cement intermediate casing in two stages with returns to surface. WOC 18 hours. Pressure test to 1500 psi/30 minutes. Drill 8 3/4" to a TD of 7595' using air/mist. Logs will be run at TD. Run and cement production casing in two stages with returns to intermediate casing shoe. WOC 6 hours. The Mesa Verde and Dakota intervals will be selectively perforated and stimulated with fresh water or fresh water based gel fluids.

Unocal maintains a statewide multiwell surface damage bond #222933.

IN ABOVE SPACE DESCRIBE PROPOSED PROGRAM: IF PROPOSAL IS TO DEEPEN OR PLUG BACK, GIVE DATA ON PRESENT PRODUCTIVE ZONE AND PROPOSED NEW PRODUCTIVE ZONE. GIVE BLOWOUT PREVENTER PROGRAM, IF ANY.

I hereby certify that the information above is true and complete to the best of my knowledge and belief.

SIGNATURE

Bill Hering

TITLE

District Petroleum Engineer

DATE 03/15/91

TYPE OR PRINT NAME

Bill Hering

TELEPHONE NO. 326-7600

(This space for State Use)

APPROVED BY

Emir Busch

TITLE

DEPUTY OIL & GAS INSPECTOR, DIST. #3

DATE

MAR 20 1991

CONDITIONS OF APPROVAL, IF ANY:

Hold C-104 for MC

APPROVAL EXPIRES 9-20-91
UNLESS DRILLING IS COMMENCED.
SPUD NOTICE MUST BE SUBMITTED
WITHIN 10 DAYS.

RECEIVED

MAR 5 1981

NOV 10 1980
DIST 1

MAR 5 1981

MAR 5 1981

WITHIN 10 DAYS
AND NOTICE MUST BE SUBMITTED
TO THE DIRECTOR IS COMPLETED
AND APPROVAL EXPIRES

WELL LOCATION AND ACREAGE DEDICATION PLAT

Effective 1-1-83

All distances must be from the outer boundaries of the Section.

Operator UNOCAL		Lease RINCON		Well No. 158M
Unit Letter J	Section 22	Township 27N	Range 6W	County Rio Arriba
Actual Footage Location of Well: 1535 feet from the South line and 1480 feet from the East line				
Ground Level Elev. 6426	Producing Formation Dakota - Mesa Verde	Pool Basin - Blanco	Dedicated Acreage 320/160 320 Acres	

1. Outline the acreage dedicated to the subject well by colored pencil or hachure marks on the plat below.

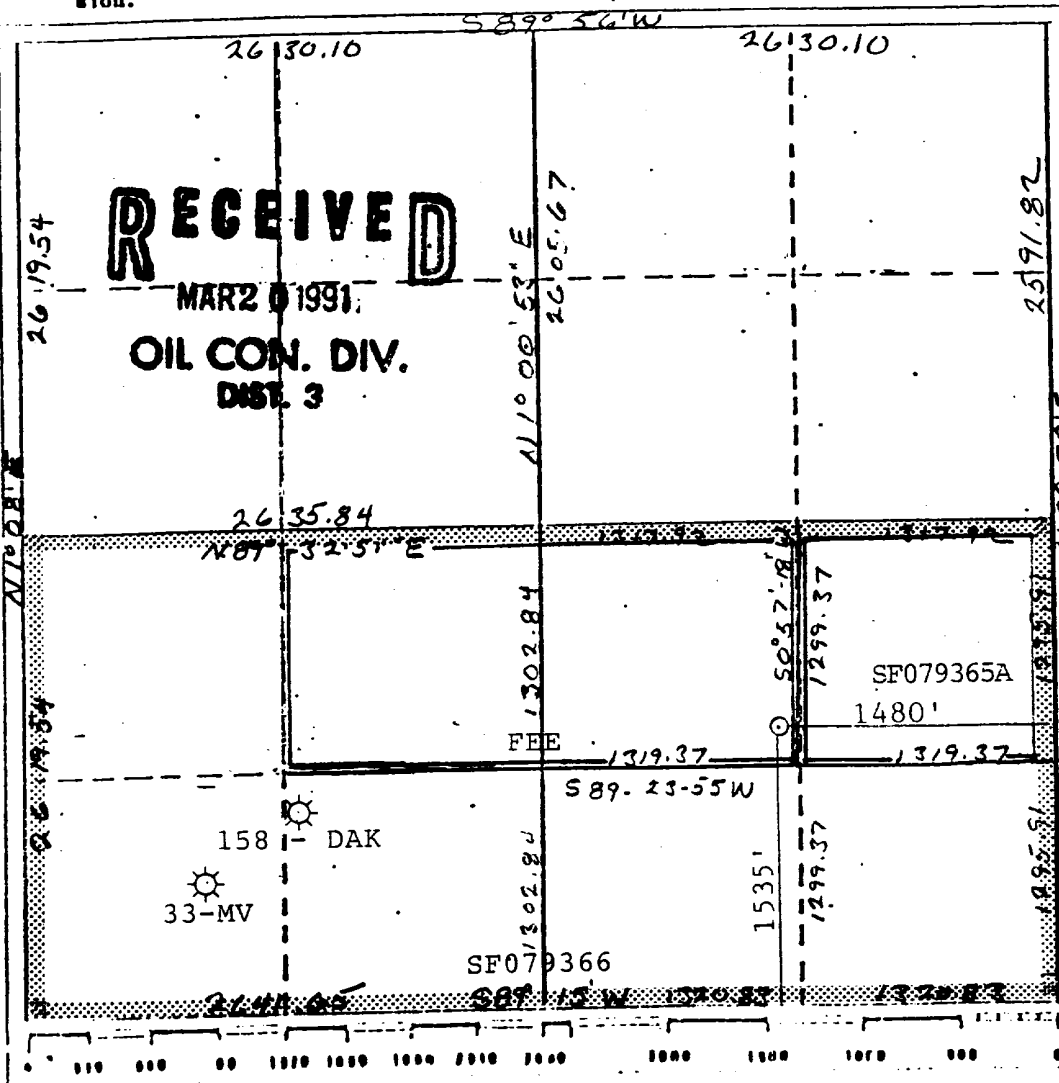
2. If more than one lease is dedicated to the well, outline each and identify the ownership thereof (both as to working interest and royalty).

3. If more than one lease of different ownership is dedicated to the well, have the interests of all owners been consolidated by communitization, unitization, force-pooling, etc?

☐ Yes ☐ No If answer is "yes," type of consolidation N/A Unit Agreement

If answer is "no," list the owners and tract descriptions which have actually been consolidated. (Use reverse side of this form if necessary.)

No allowable will be assigned to the well until all interests have been consolidated (by communitization, unitization, forced-pooling, or otherwise) or until a non-standard unit, eliminating such interests, has been approved by the Commission.



CERTIFICATION

I hereby certify that the information contained herein is true and complete to the best of my knowledge and belief.

Name
Mr. Bill Hering

Position
District Petroleum Engineer

Company
UNOCAL

Date
03/18/91

I hereby certify that the well location shown on this plat is true and correct from field notes of the survey made by me or under my supervision and that the same is true and correct to the best of my knowledge and belief.

Date Surveyed
March 1, 1989

Registered Professional Engineer
and/or Land Surveyor

Cecil B. Tullis
Certificate No.

9672

RECEIVED

MAR 2 1921

JOHN COLEMAN

DEPT. 3

