

UNITED STATES  
DEPARTMENT OF THE INTERIOR  
BUREAU OF LAND MANAGEMENT

APPLICATION FOR PERMIT TO DRILL, DEEPEN, OR PLUG BACK

1a. TYPE OF WORK  
DRILL ☒ DEEPEN ☐ PLUG BACK ☐

b. TYPE OF WELL  
OIL WELL ☐ GAS WELL ☒ OTHER ☐  
SINGLE ZONE ☐ MULTIPLE ZONE ☒

2. NAME OF OPERATOR  
Union Oil Company of California

3. ADDRESS OF OPERATOR  
3300 N. Butler, Suite 200, Farmington, NM 87401

4. LOCATION OF WELL (Report location clearly and in accordance with any State requirements.)  
At surface  
1740' FNL - 1500' FWL, Sec. 20, T27N, R6W  
At proposed prod. zone  
same

14. DISTANCE IN MILES AND DIRECTION FROM NEAREST TOWN OR POST OFFICE\*  
21.5 miles SE of Blanco, NM

15. DISTANCE FROM PROPOSED\*  
LOCATION TO NEAREST  
PROPERTY OR LEASE LINE, FT.  
1740' FNL  
(Also to nearest drilg. unit line, if any)

16. NO. OF ACRES IN LEASE  
2558.72

17. NO. OF ACRES ASSIGNED  
TO THIS WELL  
N 320/110 320

18. DISTANCE FROM PROPOSED LOCATION\*  
TO NEAREST WELL, DRILLING, COMPLETED,  
OR APPLIED FOR, ON THIS LEASE, FT.  
300'

19. PROPOSED DEPTH  
7579'

20. ROTARY OR CABLE TOOLS  
Rotary

21. ELEVATIONS (Show whether DF, RT, GR, etc.)  
6488 This action is subject to technical and  
procedural review pursuant to 43 CFR 3185.3  
and appeal pursuant to 43 CFR 3185.4.

22. APPROX. DATE WORK WILL START\*  
April 1, 1991

23. PROPOSED CASING AND CEMENTING PROGRAM

SIZE OF HOLE	SIZE OF CASING	WEIGHT PER FOOT	SETTING DEPTH	QUANTITY OF CEMENT
17 1/2	13 3/8	48# H-40	500'	708 cf-Circ. to Surface
12 1/4	9 5/8	40# K-55	(1000') 4500'	Stage 1- 776 cf-Circ. to DV
DV tool @ 2828	9 5/8	36# K-55	(3500')	Stage 2-1316 cf-Circ. to Surface
8 3/4	7	26# N-80	(3079') 7579'	Stage 1- 303 cf-Circ. to DV
DV tool @ 6000	7	23# K-55	(4500')	Stage 2- 303 cf-Circ. to 9 5/8 Sho

Proposed to spud in San Jose Formation. Will drill a 17 1/2" hole to a TD of 500'. Run and cement surface casing with returns to surface. WOC 18 hours. Pressure test to 600 psi/30 minutes. Drill a 12 1/4" hole to a TD of 4500' using fresh water mud. Run and cement intermediate casing in two stages with returns to surface. WOC 18 hours. Pressure test to 1500 psi/30 minutes. Drill 8 3/4" to a TD of 7579' using air/mist. Logs will be run at TD. Coring is anticipated of the Cliffhouse, Point Lookout and Dakota Formations. Run and cement production casing in two stages with returns to intermediate casing shoe. WOC 6 hours. The Mesa Verde and Dakota intervals will be selectively perforated and stimulated with fresh water or fresh water based gel fluids. Surface ownership is BLM.

IN ABOVE SPACE DESCRIBE PROPOSED PROGRAM: If proposal is to deepen or plug back, give data on present productive zone and proposed new productive zone. If proposal is to drill or deepen directionally, give pertinent data on subsurface locations and measured and true vertical depths. Give blowout preventer program, if any.

24. SIGNED [Signature] TITLE District Petroleum Engineer DATE 03/18/91

(This space for Federal or State office use)

PERMIT NO. \_\_\_\_\_ APPROVAL DATE \_\_\_\_\_

APPROVED BY \_\_\_\_\_ TITLE \_\_\_\_\_

CONDITIONS OF APPROVAL, IF ANY:

[Signature] OIL CON. DIV. DIST. 3  
See Instructions On Reverse Side

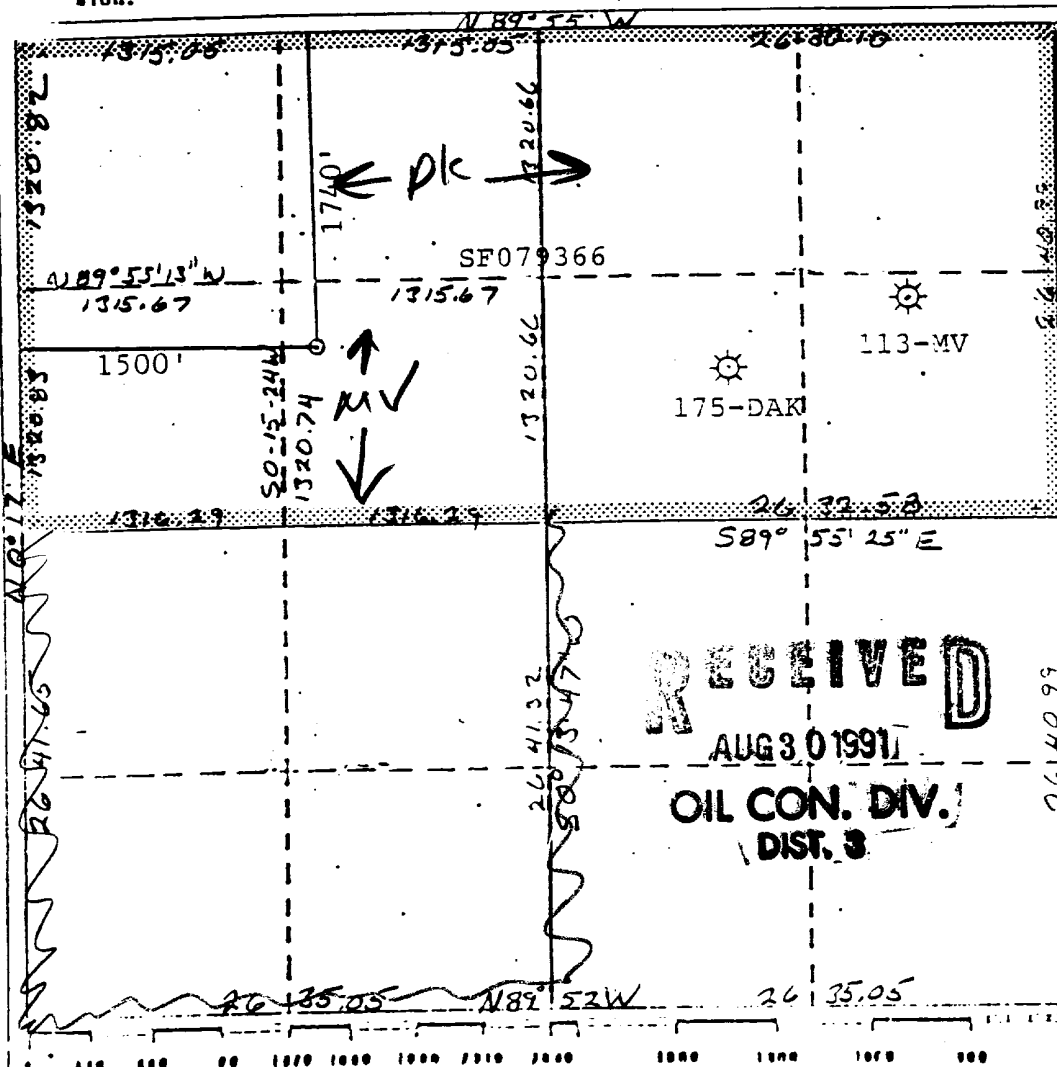
APPROVED  
AS AMENDED

[Signature]  
AREA MANAGER

Item C-102  
Supersedes C-128  
Effective 1-1-83

RECEIVED

No allowable will be assigned to the well until all interests have been consolidated (by communilization, unitization, forced-pooling, or otherwise) or until a non-standard unit, eliminating such interests, has been approved by the Commission.



I hereby certify that the information contained herein is true and complete to the best of my knowledge and belief.

Bill Herin

**Name**

Bill Hering

## Position

District Petroleum Engr.

**Company**

UNOCAL

Date \_\_\_\_\_

03/18/91

I hereby certify that the West location shown on this plot was plotted from field notes of actual surveys made by me or under my supervision, and that the same is true and correct to the best of my knowledge and belief.

Carl B. Tuller

Date Sweepled

January 27, 1989

Registered Professional Engineer  
and/or Land Surveyor

Cecil B. Tullis  
Sustaining the

9672

