

UNITED STATES
DEPARTMENT OF THE INTERIOR

BUREAU OF LAND MANAGEMENT

APPLICATION FOR PERMIT TO DRILL, DEEPEN, OR PLUG BACK

1a. TYPE OF WORK

DRILL ☒

DEEPEN ☐

PLUG BACK ☐

b. TYPE OF WELL

OIL
WELL ☐

GAS
WELL ☒

OTHER

SINGLE
ZONE ☐

MULTIPLE
ZONE ☒

2. NAME OF OPERATOR

Union Oil Company of California

3. ADDRESS OF OPERATOR

3300 N. Butler Ste 200

Farmington, NM 87401

4. LOCATION OF WELL (Report location clearly and in accordance with any State requirements.)*

At surface

At proposed prod. zone 1645 FSL & 1775 FEL
Same

14. DISTANCE IN MILES AND DIRECTION FROM NEAREST TOWN OR POST OFFICE*

22 miles SE of Blanco, NM

15. DISTANCE FROM PROPOSED*
LOCATION TO NEAREST
PROPERTY OR LEASE LINE, FT.
(Also to nearest drlg. unit line, if any)

1645

16. NO. OF ACRES IN LEASE

2558.72

17. NO. OF ACRES ASSIGNED
TO THIS WELL

S/2 320/320

18. DISTANCE FROM PROPOSED LOCATION*
TO NEAREST WELL, DRILLING, COMPLETED,
OR APPLIED FOR, ON THIS LEASE, FT.

950

19. PROPOSED DEPTH

7620'

20. ROTARY OR CABLE TOOLS

Rotary

21. ELEVATIONS (Show whether DF, RT, GR, etc.)
6528' Gr.

22. APPROX. DATE WORK WILL START*

04/15/92

23.

PROPOSED CASING AND CEMENTING PROGRAM

DRILLING OPERATIONS AUTHORIZED ARE
SUBJECT TO COMPLIANCE WITH ATTACHED
"GENERAL REQUIREMENTS"

SIZE OF HOLE	SIZE OF CASING	WEIGHT PER FOOT	SETTING DEPTH
12.25"	9.625"	36#	350
8.75"	7.00"	23#	7620
Stage tool @ 4500' +- ClB. 2nd stage 500 sxs(935cuft) extended Cl B. tail w/ 150 sxs(177cuft) Cl. B w/2% CaCl2			

Union Oil Company of California wishes to advise that we intend to drill a 12.25" hole to 350' with mud. Run 9.625" casing to 350' and cement to surface with 200 sxs Cl B cement. Nipple up and test BOP. Drill 8.75" hole to 7620' with mud. Log well. Run 7" production casing to 7620'. Cement with 200 sxs extended Cl. B. tailed with 150 sxs Cl. B. Second stage 500 sxs extended Cl. B. tailed by 150 sxs Cl.B. with 2% CaCl2. Perforate pay section in the Mesaverde and Dakota Sands. Stimulate as required.

RECEIVED

APPROVED
AS AMENDED

IN ABOVE SPACE DESCRIBE PROPOSED PROGRAM: If proposal is to deepen or plug back, give data on present productive zone and proposed new productive zone. If proposal is to drill or deepen directionally, give pertinent data on subsurface locations and measured and true vertical depths. Give blowout preventer program, if any.

24.

SIGNED

(This space for Federal or State office use)

TITLE Dist. Drlg. Supt.

DATE

APPROVED
AS AMENDED

PERMIT NO.

APPROVAL DATE

APPROVED BY

TITLE

CONDITIONS OF APPROVAL, IF ANY:

NMOCD

*See Instructions On Reverse Side

Title 18 U.S.C. Section 1001, makes it a crime for any person knowingly and willfully to make to any department or agency of the United States any false, fictitious or fraudulent statements or representations as to any matter within its jurisdiction.

Submit to Appropriate
District Office
State Lease - 4 copies
Fee Lease - 3 copies

State of New Mexico
Energy, Minerals and Natural Resources Department

Form C-102
Revised 1-1-89

OIL CONSERVATION DIVISION

DISTRICT I
P.O. Box 1980, Hobbs, NM 88240

P.O. Box 2088
Santa Fe, New Mexico 87504-2088

DISTRICT II
P.O. Drawer DD, Artesia, NM 88210

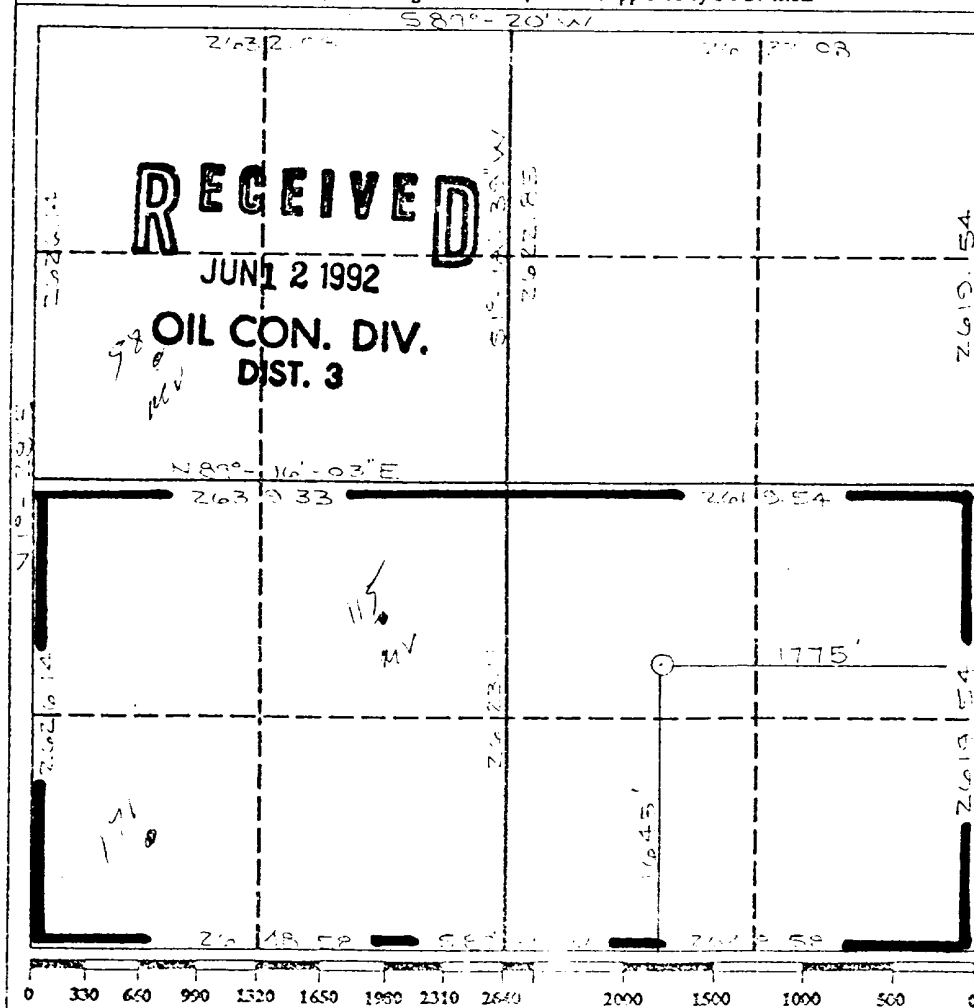
DISTRICT III
1000 Rio Brazos Rd., Aztec, NM 87410

WELL LOCATION AND ACREAGE DEDICATION PLAT

All Distances must be from the outer boundaries of the section

Operator UNOCAL			Lease RINCON <i>Unit</i>		Well No. 171M
Unit Letter J	Section 21	Township T27N	Range 6W	County NMPM	Rio Arriba
Actual Footage Location of Well: 1645 feet from the South line and 1775 feet from the East line					
Ground level Elev. 6528	Producing Formation Mesaverde/Dakota		Pool Blanco/Rasin	Dedicated Acreage: S/2 320 Acres	

1. Outline the acreage dedicated to the subject well by colored pencil or hatchure marks on the plat below.
2. If more than one lease is dedicated to the well, outline each and identify the ownership thereof (both as to working interest and royalty).
3. If more than one lease of different ownership is dedicated to the well, have the interest of all owners been consolidated by communization, unitization, force-pooling, etc.?
☐ Yes ☐ No If answer is "yes" type of consolidation _____
If answer is "no" list the owners and tract descriptions which have actually been consolidated. (Use reverse side of this form if necessary.)
No allowable will be assigned to the well until all interests have been consolidated (by communization, unitization, forced-pooling, or otherwise) or until a non-standard unit, eliminating such interest, has been approved by the Division.



OPERATOR CERTIFICATION

I hereby certify that the information contained herein is true and complete to the best of my knowledge and belief.

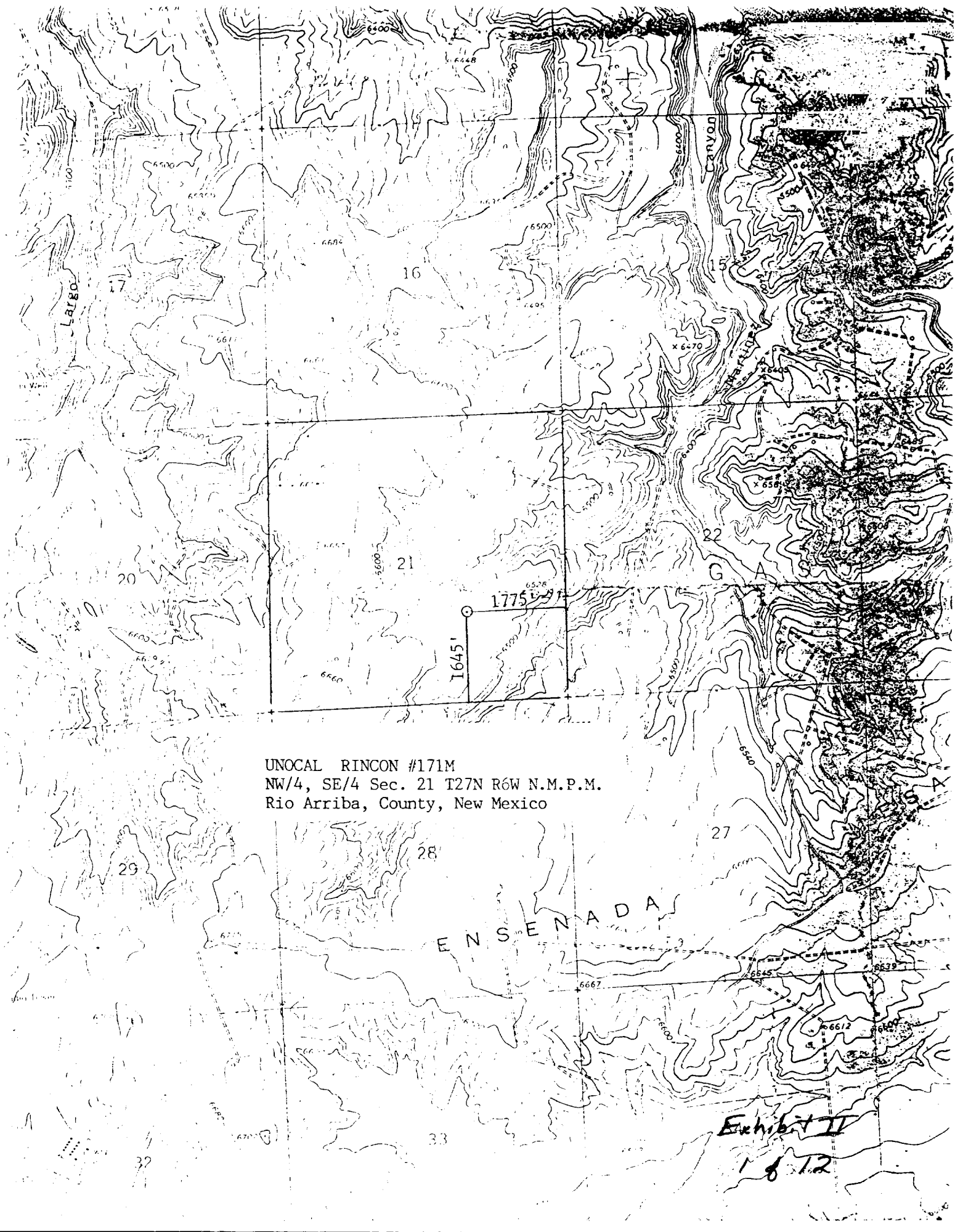
Signature *Robert C. Frank*
Printed Name Robert C. Frank
Position Agent
Company Union Oil Company of California
Date March 23, 1992

SURVEYOR CERTIFICATION

I hereby certify that the well location shown on this plat was plotted from field notes of actual surveys made by me or under my supervision, and that the same is true and correct to the best of my knowledge and belief.

Date Surveyed March 23, 1992
Signature *B. Tullis*
Professional Surveyor
New Mexico
B. Tullis
9646 PROFESSIONAL LAND SURVEYOR

Exhibit 1



UNOCAL RINCON #171M
NW/4, SE/4 Sec. 21 T27N R6W N.M.P.M.
Rio Arriba, County, New Mexico

Exhibit II
1 of 12