

UNITED STATES  
DEPARTMENT OF THE INTERIOR

BUREAU OF LAND MANAGEMENT

3-034-25152

APPLICATION FOR PERMIT TO DRILL, DEEPEN, OR PLUG BACK

1a. TYPE OF WORK

DRILL ☒ XX

DEEPEN ☐

PLUG BACK ☐

b. TYPE OF WELL

OIL  
WELL ☐

GAS  
WELL ☒ XX

OTHER

SINGLE  
ZONE ☐

MULTIPLE  
ZONE ☒ XX

2. NAME OF OPERATOR

Union Oil Company of California 23708

3. ADDRESS OF OPERATOR

3300 N. Butler Ste 200

Farmington, NM 87401

4. LOCATION OF WELL (Report location clearly and in accordance with any State requirements.)\*

At surface

At proposed prod. zone 1035 FSL & 805 FEL  
Same

14. DISTANCE IN MILES AND DIRECTION FROM NEAREST TOWN OR POST OFFICE\*

22 miles SE of Blanco, NM

15. DISTANCE FROM PROPOSED\*  
LOCATION TO NEAREST  
PROPERTY OR LEASE LINE, FT.  
(Also to nearest drlg. unit line, if any)

1035

16. NO. OF ACRES IN LEASE

2605.33

17. NO. OF ACRES ASSIGNED  
TO THIS WELL

S/2 320 / 320

18. DISTANCE FROM PROPOSED LOCATION\*  
TO NEAREST WELL, DRILLING, COMPLETED,  
OR APPLIED FOR, ON THIS LEASE, FT.

2200

19. PROPOSED DEPTH

7715'

20. ROTARY OR CABLE TOOLS

Rotary

21. ELEVATIONS (Show whether DF, RT, GR, etc.) This action is subject to technical and  
procedural review pursuant to 43 CFR 3165.3  
and appeal pursuant to 43 CFR 3165.4.

6696' Gr.

22. APPROX. DATE WORK WILL START\*

04/15/92

23. PROPOSED CASING AND CEMENTING PROGRAM

| SIZE OF HOLE   | SIZE OF CASING | WEIGHT PER FOOT | SETTING DEPTH |
|--|----------------|-----------------|---------------|
| 12.25"   | 8.625"         | 24#             | 350           |
| 7.875"   | 5.50"          | 17#             | 7715          |
| Stage tool @ 4500' +-<br>ClB. 2nd stage 450 sxs (842cuft) extended Cl B. tail w/ 150 sxs (177cuft)<br>Cl. B w/2% CaCl2 |                |                 |               |

DRILLING OPERATIONS AUTHORIZED ARE  
SUBJECT TO COMPLIANCE WITH ATTACHED  
"GENERAL REQUIREMENTS"

245sxs CL B (289 cuft)  
290sxs (542 cuft) extended Surface  
Cl. B. tail w/ 150 sxs (177cuft)

Union Oil Company of California wishes to advise that we intend to drill a 12.25" hole to 350' with mud. Run 8.625" casing to 350' and cement to surface with 245 sxs Cl B cement. Nipple up and test BOP. Drill 7.875" hole to 7715' with mud. Log well. Run 5.5" production casing to 7715'. Cement with 290 sxs extended Cl. B. tailed with 150 sxs Cl. B. Second stage 450 sxs extended Cl. B. tailed by 150 sxs Cl. B. with 2% CaCl2. Perforate pay section in the Mesaverde and Dakota Sands. Stimulate as required.

RECEIVED

JUN 12 1992

IN ABOVE SPACE DESCRIBE PROPOSED PROGRAM: If proposal is to deepen or plug back, give data on present productive zone and proposed new productive zone. If proposal is to drill or deepen directionally, give pertinent data on subsurface locations and measured and true vertical depths. Give blowout preventer program, if any.

24.

SIGNED

TITLE

Dist. Drlg. Supt.

DATE

(This space for Federal or State office use)

PERMIT NO.

APPROVAL DATE

APPROVED BY

TITLE

CONDITIONS OF APPROVAL, IF ANY:

APPROVED  
AS AMENDED

DATE

JUN 11 1992

AREA MANAGER

\*See Instructions On Reverse Side

Submit to Appropriate  
District Office  
State Lease - 4 copies  
Fee Lease - 3 copies

State of New Mexico  
Energy, Minerals and Natural Resources Department

OIL CONSERVATION DIVISION

P.O. Box 2088  
Santa Fe, New Mexico 87504-2088

RECEIVED  
Form C-102  
Revised 1-1-89

JUN 12 1992

OIL CON. DIV.  
DIST. 3

DISTRICT I  
P.O. Box 1980, Hobbs, NM 88240

DISTRICT II  
P.O. Drawer DD, Artesia, NM 88210

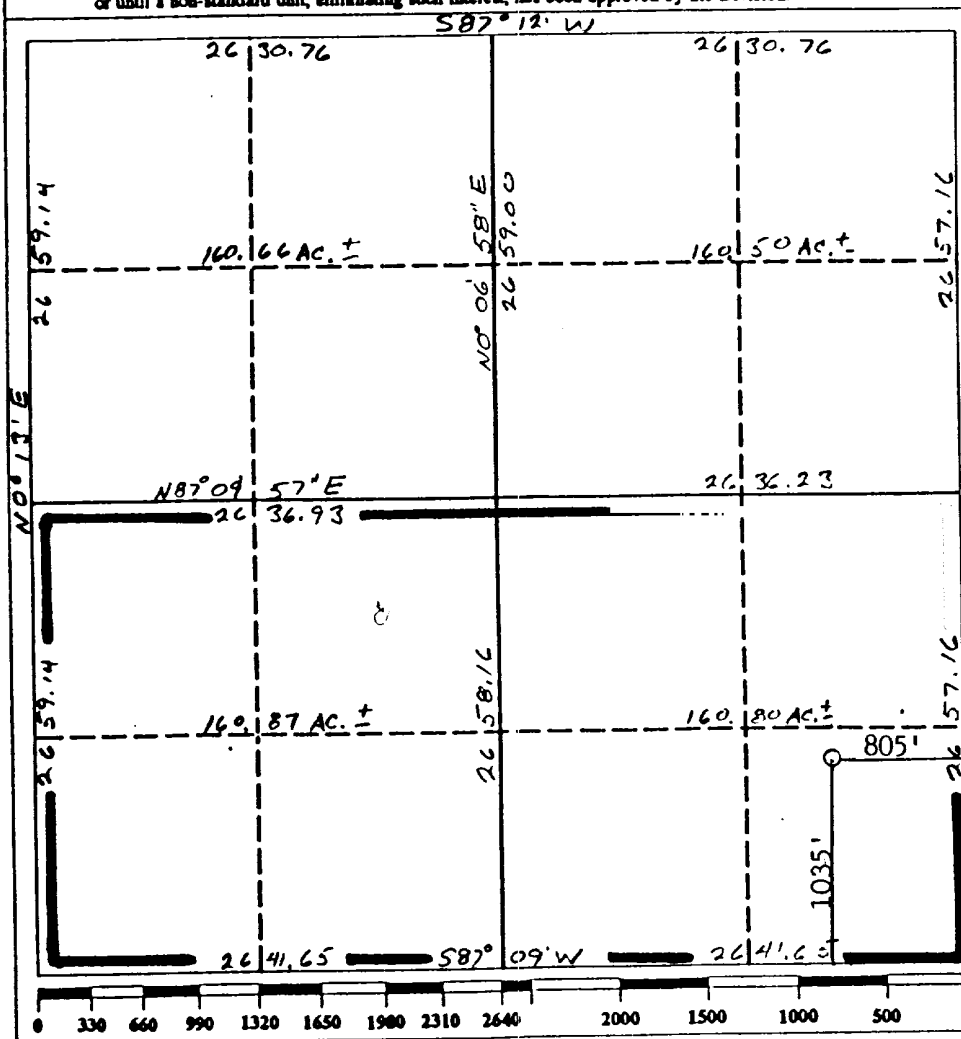
DISTRICT III  
1000 Rio Brazos Rd., Aztec, NM 87410

WELL LOCATION AND ACREAGE DEDICATION PLAT

All Distances must be from the outer boundaries of the section

|   |   |                 |                             |                |  |
|---|---|-----------------|-----------------------------|----------------|--|
| Operator<br>UNOCAL  |   |                 | Lease<br>RINCON <i>West</i> |                | Well No.<br>129 M                                |
| Unit Letter<br>P  | Section<br>29                           | Township<br>27N | Range<br>6W                 | County<br>NMPM | Rio Arriba                                       |
| Actual Footage Location of Well:<br>1035 feet from the South line and 805 feet from the East line |   |                 |                             |                |  |
| Ground level Elev.<br>6696  | Producing Formation<br>Mesaverde/Dakota |                 | Pool<br>Blanco/Basin        |                | Dedicated Acreage<br>320 S/2 <sup>20</sup> Acres |

- Outline the acreage dedicated to the subject well by colored pencil or hatchure marks on the plat below.
- If more than one lease is dedicated to the well, outline each and identify the ownership thereof (both as to working interest and royalty).
- If more than one lease of different ownership is dedicated to the well, have the interest of all owners been consolidated by communization, unitization, force-pooling, etc.?  
☐ Yes ☐ No If answer is "yes" type of consolidation \_\_\_\_\_  
If answer is "no" list the owners and tract descriptions which have actually been consolidated. (Use reverse side of this form if necessary.)  
No allowable will be assigned to the well until all interests have been consolidated (by communization, unitization, forced-pooling, or otherwise) or until a non-standard unit, eliminating such interest, has been approved by the Division.



OPERATOR CERTIFICATION

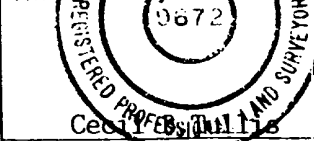
I hereby certify that the information contained herein is true and complete to the best of my knowledge and belief.

Signature *Robert C. Frank*  
Printed Name Robert C. Frank  
Agent  
Position Union Oil Company of California  
Company  
Date March 20, 1992

SURVEYOR CERTIFICATION

I hereby certify that the well location shown on this plat was plotted from field notes of actual surveys made by me or under my supervision, and that the same is true and correct to the best of my knowledge and belief.

Date Surveyed January 24, 1992  
Signature *GIL B. TULLIS*  
Professional Surveyor  
9672



Certificate No.  
9672

Exhibit I

