

UNITED STATES  
DEPARTMENT OF THE INTERIOR  
BUREAU OF LAND MANAGEMENT

30-039-25184

APPLICATION FOR PERMIT TO DRILL, DEEPEN, OR PLUG BACK

1a. TYPE OF WORK  
DRILL ☒ XX DEEPEN ☐ PLUG BACK ☐

b. TYPE OF WELL  
OIL WELL ☐ GAS WELL ☒ OTHER ☐ SINGLE ZONE ☐ MULTIPLE ZONE ☒ XX

2. NAME OF OPERATOR  
23708  
Union Oil Company of California

3. ADDRESS OF OPERATOR  
3300 N. Butler Ste 200  
Farmington, NM 87401

4. LOCATION OF WELL (Report location clearly and in accordance with any State requirements.)  
At surface

At proposed prod. zone 790 FSL & 1025 FEL  
Same

14. DISTANCE IN MILES AND DIRECTION FROM NEAREST TOWN OR POST OFFICE\*  
21 miles SE of Blanco, NM

15. DISTANCE FROM PROPOSED\*  
LOCATION TO NEAREST  
PROPERTY OR LEASE LINE, FT.  
(Also to nearest drlg. unit line, if any) 1025

16. NO. OF ACRES IN LEASE 800  
18. DISTANCE FROM PROPOSED LOCATION\*  
TO NEAREST WELL, DRILLING, COMPLETED,  
OR APPLIED FOR, ON THIS LEASE, FT. 160

19. PROPOSED DEPTH 7665'  
21. ELEVATIONS (Show whether DF, RT, GR, etc.) This action is subject to technical and  
procedural review pursuant to 43 CFR 3100.3  
6616' Gr. and appeal pursuant to 43 CFR 3100.4.

23. PROPOSED CASING AND CEMENTING PROGRAM

SIZE OF HOLE	SIZE OF CASING	WEIGHT PER FOOT	SETTING DEPTH
12.25"	8.625"	24#	350
7.875"	5.50"	17#	7665
Stage tool @ 4500' +- ClB. 2nd stage 450 sxs (842cuft) extended Cl B. tail w/ 150 sxs (177cuft) Cl. B w/2% CaCl2			

5. LEASE DESIGNATION AND SERIAL NO.

SF-079360

6. IF INDIAN, ALLOTTEE OR TRIBE NAME

N/A

7. UNIT AGREEMENT NAME

Rincon Unit

8. FARM OR LEASE NAME

Rincon Unit 11510

9. WELL NO.

184 M

10. FIELD AND POOL, OR WILDCAT

72319 Blanco MV/Basin DK

11. SEC., T., R., M., OR BLK.  
AND SURVEY OR AREA

Sec. 15-T27N-R7W

12. COUNTY OR PARISH

Rio Arriba NM

13. STATE

17. NO. OF ACRES ASSIGNED  
TO THIS WELL

E/2 320/320

20. ROTARY OR CABLE TOOLS

Rotary

22. APPROX. DATE WORK WILL START\*

04/15/92

DRILLING OPERATIONS AUTHORIZED ARE  
SUBJECT TO COMPLIANCE WITH ATTACHED  
"GENERAL REQUIREMENTS"

245sxs CL B (289 cuft)  
290sxs (542 cuft) extended Surface  
Cl. B. tail w/ 150 sxs (177cuft)

Union Oil Company of California wishes to advise that we intend to drill a 12.25" hole to 350' with mud. Run 8.625" casing to 350' and cement to surface with 245 sxs Cl B cement. Nipple up and test BOP. Drill 7.875" hole to 7665' with mud. Log well. Run 5.5" production casing to 7665'. Cement with 290 sxs extended Cl. B. tailed with 150 sxs Cl. B. Second stage 450 sxs extended Cl. B. tailed by 150 sxs Cl.B. with 2% CaCl2. Perforate pay section in the Mesaverde and Dakota Sands. Stimulate as required.

IN ABOVE SPACE DESCRIBE PROPOSED PROGRAM: If proposal is to deepen or plug back, give data on present productive zone and proposed new productive zone. If proposal is to drill or deepen directionally, give pertinent data on subsurface locations and measured and true vertical depth. Give blowout preventer program, if any.

24. SIGNED John Benson TITLE Dist. Drlg. Supt. DATE 3/26/92

(This space for Federal or State office use)

PERMIT NO. APPROVAL DATE

APPROVED BY TITLE DATE JUN 11 1992

CONDITIONS OF APPROVAL, IF ANY:

NMOCD

\*See Instructions On Reverse Side

RECEIVED  
JUN 2 1992

OIL CON. DIV.  
DIST. 3

APPROVED  
AS AMENDED

for Deane & Spence  
AREA MANAGER

Submit to Appropriate  
District Office  
State Lease - 4 copies  
Fee Lease - 3 copies

State of New Mexico  
Energy, Minerals and Natural Resources Department

Form C-102  
Revised 1-1-89

OIL CONSERVATION DIVISION

P.O. Box 2088

Santa Fe, New Mexico 87504-2088

JUN 12 1992

DISTRICT I  
P.O. Box 1980, Hobbs, NM 88240

DISTRICT II  
P.O. Drawer DD, Artesia, NM 88210

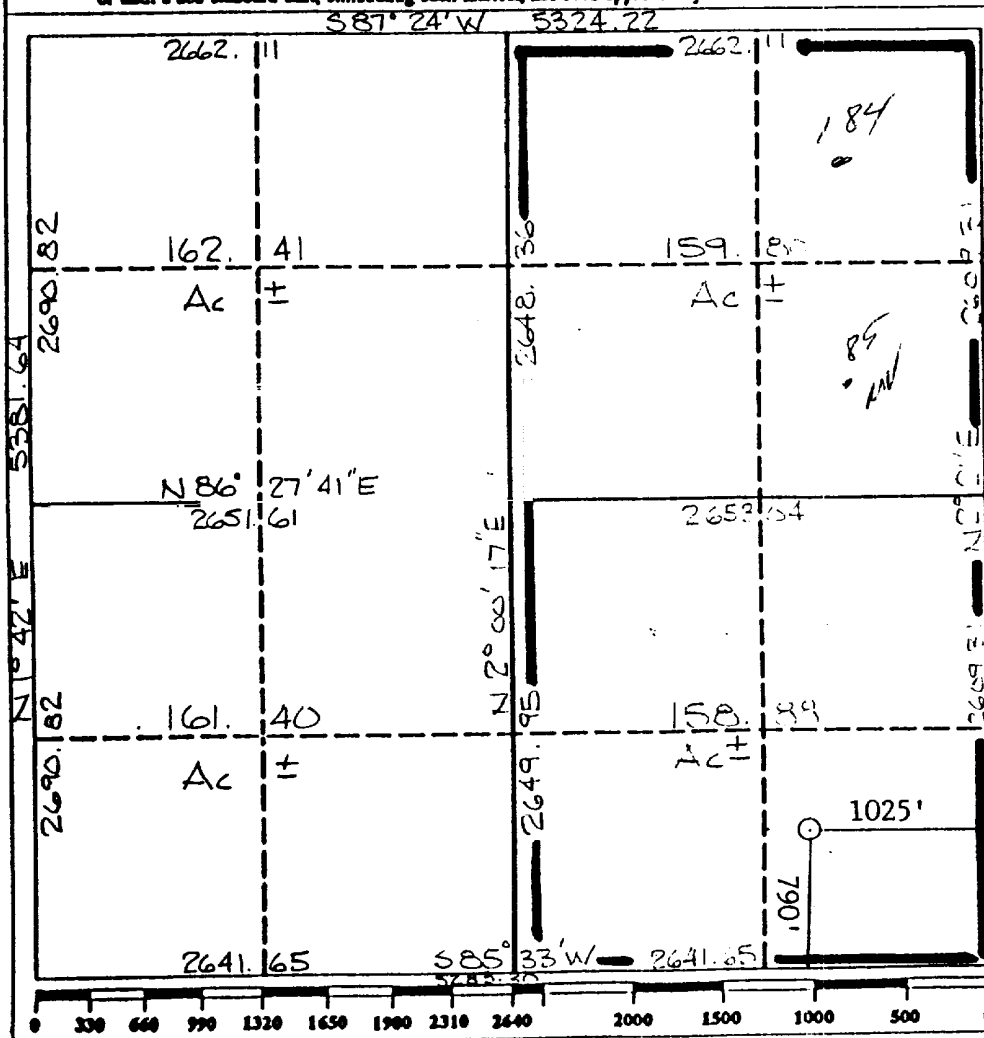
DISTRICT III  
1000 Rio Brasos Rd., Aztec, NM 87410

WELL LOCATION AND ACREAGE DEDICATION, DIST. 3

All Distances must be from the outer boundaries of the section

Operator UNOCAL			Lease RINCON Unit		Well No. 184
Unit Letter P	Section 15	Township 27 N	Range 7 W	County NM PM	Rio Arriba
Actual Footage Location of Well: 790 feet from the South line and 1025 feet from the East line					
Ground level Elev. 6616	Producing Formation Mesaverde/Dakota		Pool Blanco/Basin		Dedicated Acreage: E/2 320/820 Acres

- Outline the acreage dedicated to the subject well by colored pencil or hatchure marks on the plat below.
- If more than one lease is dedicated to the well, outline each and identify the ownership thereof (both as to working interest and royalty).
- If more than one lease of different ownership is dedicated to the well, have the interest of all owners been consolidated by communitization, unitization, force-pooling, etc.?  
☐ Yes ☐ No If answer is "yes" type of consolidation \_\_\_\_\_  
If answer is "no" list the owners and tract descriptions which have actually been consolidated. (Use reverse side of this form if necessary.)  
No allowable will be assigned to the well until all interests have been consolidated (by communitization, unitization, forced-pooling, or otherwise) or until a non-standard unit, eliminating such interest, has been approved by the Division.



OPERATOR CERTIFICATION

I hereby certify that the information contained herein is true and complete to the best of my knowledge and belief.

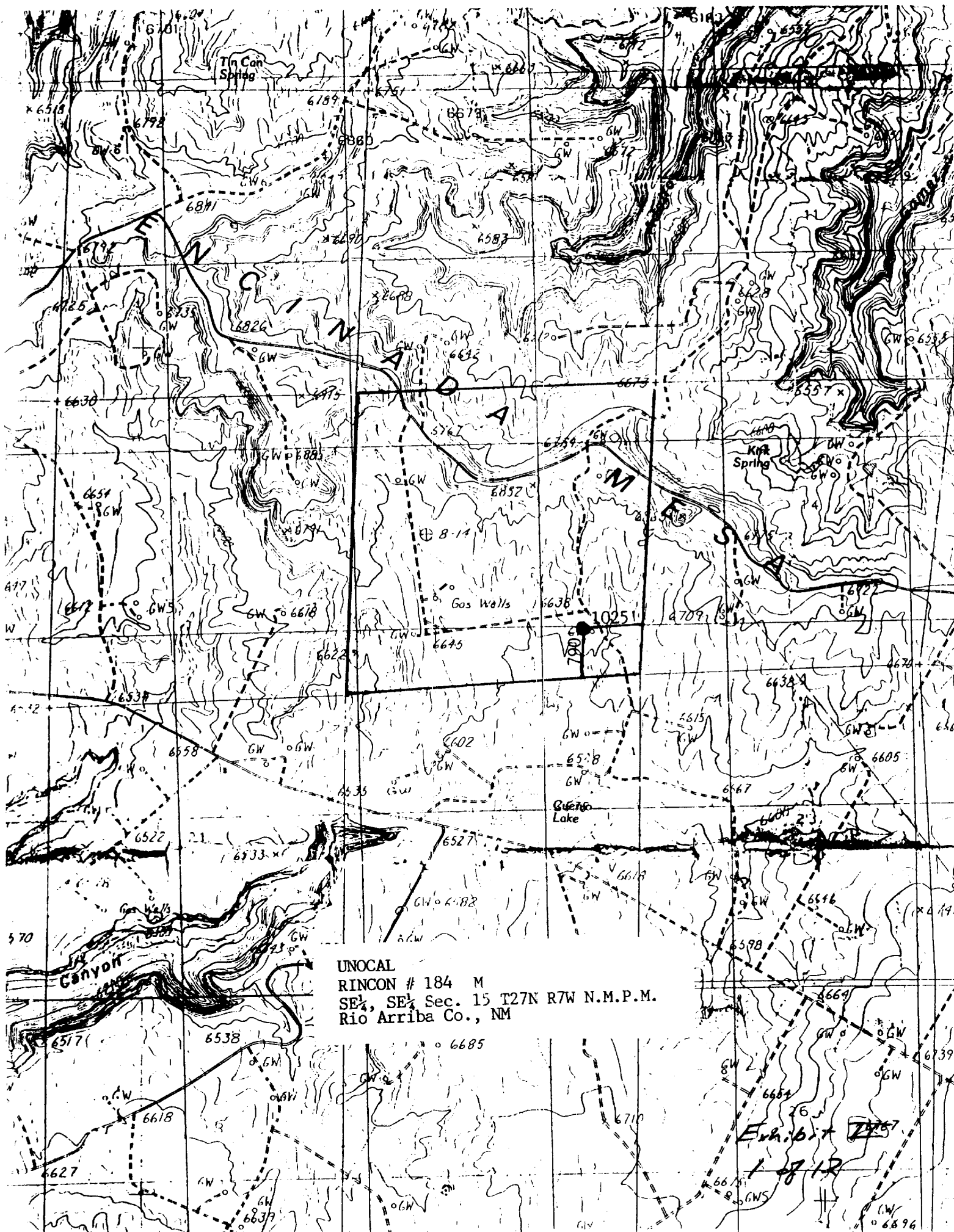
Signature  
*Robert C. Frank*  
Printed Name  
Robert C. Frank  
Position  
Agent  
Company  
Union Oil Company of California  
Date  
March 20, 1992

SURVEYOR CERTIFICATION

I hereby certify that the well location shown on this plat was plotted from field notes of actual surveys made by me or under my supervision, and that the same is true and correct to the best of my knowledge and belief.

Date Surveyed  
January 20, 1992  
Signature of Surveyor  
*Cecil B. Tullis*  
Professional Surveyor  
9672  
Certificate No.  
9672

Exhibit 1



UNOCAL  
RINCON # 184 M  
SE $\frac{1}{4}$ , SE $\frac{1}{4}$  Sec. 15 T27N R7W N.M.P.M.  
Rio Arriba Co., NM

Exhibit 1812